

YOSEMITE COMMUNITY COLLEGE DISTRICT

FIVE YEAR CONSTRUCTION PLAN

COLUMBIA COLLEGE

MODESTO JUNIOR COLLEGE

The Five-Year Construction Plan for the District is an annual submission required by the State Chancellor's office for capital construction funding. Each year, our District Facilities Planning Department is responsible for conducting a review and update of the District's Five-Year Construction Plan. In order for the Facilities Unit of the California Community Colleges Chancellor's Office (CCCCO) to recommend projects to the Department of Finance (DOF), the Five-Year Construction Plan must be submitted to verify the needs of the District over this five-year period. Initial Project Proposals (IPP's) and Final Project Proposals (FPP's) are submitted at the same time as the Five-Year Plan. The Modesto Junior College Music Building IPP remains in active status and has sufficient points to be considered for a Modernization should the District be able to provide a 25% match. No other projects have been added to this year's submission.

The Five-Year Construction Plan summarizes all projects, calculating the capacity load ratios for offices, labs, classrooms, library, and AV/TV, based on growth projections. The Five-Year Construction Plan should also be congruent with the Educational Master Plans and Facilities Master Plans for each college. The Modesto Junior College Educational Master Plan was updated in 2023. The Columbia College Educational Master Plan was updated in 2024. Both colleges are in the process of updating their Facility Master Plans. Once the Facility Master Plans are complete, they should provide a better blueprint for the facilities and technology needs that will be required to fully implement the Education Master Plans for each campus.

Yosemite Community College District

2026-2030 Five Year Construction Plan (2026-2027 First Funding Year)

July 1, 2024

FY2026 - FY2030 FIVE YEAR CAPITAL OUTLAY PLAN
(FY2026 - 2027) FIRST YEAR FUNDING

Yosemite Community College District

Prepared in reference to the Community College Construction Act of 1980

and

approved on behalf of the local governing board for submission to
the office of the Chancellor, California Community Colleges

Signed _____

Henry C. V. Yong, Ed.S.

(Chief Executive Officer or their designee)

Title _____ Chancellor

Date _____ 05/01/2024

Contact _____ Yolanda Perregil

Telephone _____ 209-575-6512

Date Received at Chancellor's Office:

Chancellor's Office Reviewed by:

Notice of Approval

FUSION**Inventory of Land****Planning****Yosemite Community College District (590)**

List the address and acreage of every land unit owned by the district (Education Code 81821 ((b)3)). Please identify all locations, both on-campus and off-campus, grouped according to their "parent" institution. In the event the list is long or complicated, please substitute copies of college bulletins or other notices to the public which display similar information. The list should be current as of October the prior year.

Address	Acres
Columbia College	269.3
11600 Columbia College Drive Sonora, CA 95370	
Columbia College Off Campus (Calaveras)	5.9
Murphys Grade Road Angels Camp, CA 95222	
Modesto Junior College East Campus	58.3
435 College Avenue Modesto, CA 95350	
Modesto Junior College Off Campus (Patterson)	3.5
Parcel F-5, Keystone Pk. Patterson, CA 95363	
Modesto Junior College Off Campus (Turlock)	4.08
2660 Polous Drive Turlock, CA 95380	
Modesto Junior College Off Campus Agr. (Beckwith)	62
4554 Beckwith Road Modesto, CA 95358	
Modesto Junior College Off Campus Agric. Land	18
River Road Grayson, CA 95363	
Modesto Junior College West Campus	167.1
2201 Blue Gum Avenue Modesto, CA 95358	
Total Acreage:	588.18

Legislative Districts

Campus	Assembly	Senate	House
Columbia College	8,9	4	5
Modesto Junior College	8, 9, 22, 27	4, 5, 14,15	5, 13,18
Yosemite District Office*	As noted above for each college		

FUSION

Instructional Delivery Load

Planning

Yosemite Community College District (590)

Address

Baker Station

40000 Highway 108
Dardanelle, CA 95314

Beyer High School

1717 Sylvan Ave
Modesto, CA 95355

Bret Harte High School

364 Murphys Grade Road
Altaville, CA 95221

Calaveras High School

350 High School Street
San Andreas, CA 95249

California Health Care

7707 Austin Road
Stockton, CA 95215

Cassina High School

251 Barretta Street
Sonora, CA 95370

Centenary Methodist Church

1911 Toyon Drive
Modesto, CA 95350

Central Catholic High School

200 South Carpenter Road
Modesto, CA 95351

Ceres High School

2320 Central Avenue
Ceres, CA 95307

Columbia College

11600 Columbia College Drive
Sonora, CA 95370

Cornerstone Covenant Church

4105 Crowell Road
Turlock, CA 95382

Dent Elementary School

1998 Yosemite Ave
Escalon, CA 95320

Downey High School

1000 Coffee Road
Modesto, CA 95355

Hanline Elementary

4231 Central Avenue
Ceres, CA 95307

Hilmar High School

7807 North Lander Ave
Hilmar, CA 95324

Modesto Junior College East Campus

435 College Avenue
Modesto, CA 95350

Modesto Junior College West Campus

2201 Blue Gum Avenue
Modesto, CA 95358

Murphys Fire Station #1

37 Jones Street
Murphys, CA 95247

Oakdale High School; CC

739 West G Street
Oakdale, CA 95361

Pearson Education Center

500 Locust Street
Modesto, CA 95351

Pittman High School

2525 W Christofferson Pkwy
Turlock, CA 95382

Prescott Evangelical Free Church

3000 Prescott Road
Modesto, CA 95350

Relentless Fitness, Inc.

607 Tully Road
Modesto, CA 95350

Ripon High School

301 N Acacia Avenue
Ripon, CA 95366

Sierra Conserv Camp Vallecito

3670 Church Street
Vallecito, CA 95251

Sierra Conservation Center

5100 O'Byrnes Ferry Road
Jamestown, CA 95327

Sonora High School

430 North Washington Street
Sonora, CA 95370

St Matthew Church

13880 Joshua Way
Sonora, CA 95370

St. Stanislaus Golf Course

5000 Crowslanding Rd.
Modesto, CA 95358

Stanislaus County React Center

200 Hackett Rd.

Modesto, CA 95358

Summerville High School

17555 Tuolumne Road

Tuolumne, CA 95379

Turlock Golf & Country Club

10532 Golf Link Road

Turlock, CA 95380

Turlock High School

1600 East Canal Drive

Turlock, CA 95380

Vallecito Conservation Camp

3225 Six Mile Road

Angels Camp, CA 95222

Valley College High School

2209 Blue Gum Ave

Modesto, CA 95350

FUSION

District Projects Priority Order (2024-2030)

Planning

Yosemite Community College District (590)

No. Project			Schedule of Funds						
Campus	Source	Total Cost	2024-25	2025-26	2026-27	2027-28	2028-29	2029-30	2030-31
1 Music Building Modernization									
Modesto Junior College						Phases P,W	Phases C,E		
Occupancy: 2030-31	STATE:	\$9,687,482				\$847,150	\$8,840,332		
Net ASF: -156	DISTRICT:	\$3,130,136				\$211,787	\$2,918,349		
2 Affordable Student Housing Grant									
Columbia College			Phases C,E,P,W						
Occupancy: 2027-28	STATE:	\$51,901,688	\$51,901,688						
Net ASF: 27,385	DISTRICT:	\$0	\$0						
GRAND TOTALS			2024-25	2025-26	2026-27	2027-28	2028-29	2029-30	2030-31
	STATE:	\$61,589,170	\$51,901,688	\$0	\$0	\$847,150	\$8,840,332	\$0	\$0
	DISTRICT:	\$3,130,136	\$0	\$0	\$0	\$211,787	\$2,918,349	\$0	\$0

FUSION

Planning

District Capacity/Load Ratios

Yosemite Community College District (590)

District Lecture Capacity/Load Ratio

No. Project										
	Lect ASF	WSCH	Occupancy	2025-26	2026-27	2027-28	2028-29	2029-30	2030-31	2031-32
Lecture Summary / Totals				2025-26	2026-27	2027-28	2028-29	2029-30	2030-31	2031-32
Lecture ASF	Actual*/Projected WSCH			91,899	93,071	94,243	95,413	96,584	96,552	96,521
110,927	Cumulative Capacity			191,088	191,088	191,088	191,088	191,088	191,088	191,088
	Capacity/Load Ratio			208%	205%	203%	200%	198%	198%	198%

FUSION

District Capacity/Load Ratios

Planning

Yosemite Community College District (590)

District Lab Capacity/Load Ratio

No. Project										
	Lab ASF	WSCH	Occupancy	2025-26	2026-27	2027-28	2028-29	2029-30	2030-31	2031-32
1 Music Building Modernization										
	-322	-125	2030-31						74,393	
Modesto Junior College									110%	
Lab Summary / Totals				2025-26	2026-27	2027-28	2028-29	2029-30	2030-31	2031-32
	Lab ASF	Actual*/Projected WSCH		64,329	65,150	65,970	66,789	67,608	67,587	67,565
	200,827	Cumulative Capacity		74,518	74,518	74,518	74,518	74,518	74,518	74,393
		Capacity/Load Ratio		116%	114%	113%	112%	110%	110%	110%

FUSION

District Capacity/Load Ratios

Planning

Yosemite Community College District (590)

District Office Capacity/Load Ratio

No. Project		Off ASF	FTE	Occupancy	2025-26	2026-27	2027-28	2028-29	2029-30	2030-31	2031-32
2 Affordable Student Housing Grant		50	0	2027-28			872				
Columbia College							170%				
1 Music Building Modernization		-341	-2	2030-31						870	
Modesto Junior College										163%	
Office Summary / Totals					2025-26	2026-27	2027-28	2028-29	2029-30	2030-31	2031-32
Office ASF		Actual*/Projected FTE			502	508	514	521	527	533	539
158,572		Cumulative Capacity			872	872	872	872	872	872	870
		Capacity/Load Ratio			174%	172%	170%	167%	165%	164%	161%

FUSION

District Capacity/Load Ratios

Planning

Yosemite Community College District (590)

District Library Capacity/Load Ratio

No. Project		Lib ASF	Occupancy	2025-26	2026-27	2027-28	2028-29	2029-30	2030-31	2031-32
2 Affordable Student Housing Grant		931	2027-28			60,820				
Columbia College						95%				
Library Summary / Totals				2025-26	2026-27	2027-28	2028-29	2029-30	2030-31	2031-32
Library ASF	Actual*/Projected ASF			64,136	64,118	64,103	64,089	64,074	64,057	64,042
59,889	Cumulative Capacity			59,889	59,889	59,889	60,820	60,820	60,820	60,820
	Capacity/Load Ratio			93%	93%	93%	95%	95%	95%	95%

FUSION

District Capacity/Load Ratios

Planning

Yosemite Community College District (590)

District AV/TV Capacity/Load Ratio

No. Project		AV/TV ASF	Occupancy	2025-26	2026-27	2027-28	2028-29	2029-30	2030-31	2031-32
1 Music Building Modernization										
		944	2030-31						10,814	
Modesto Junior College									51%	
AV/TV Summary / Totals				2025-26	2026-27	2027-28	2028-29	2029-30	2030-31	2031-32
AV/TV ASF	Actual*/Projected ASF			21,279	21,277	21,276	21,275	21,274	21,273	21,271
9,870	Cumulative Capacity			9,870	9,870	9,870	9,870	9,870	9,870	10,814
	Capacity/Load Ratio			46%	46%	46%	46%	46%	46%	51%

FUSION**Load Distribution & Staff Forecast**

Planning

Yosemite Community College District (590)**District Load Distribution**

	Instructional Staff FTE	Total Campus WSCH	Off-Campus WSCH	On-Campus WSCH	P.E. Laboratory WSCH	On-Campus Lecture WSCH	On-Campus Laboratory
Actual Fall							
2022	471	195,871	109,364	86,507	5,090	54,268	27,149
2023	489	198,475	103,554	94,921	5,093	60,729	29,099
Forecast							
2024	496	201,076	40,215	160,861	6,627	90,726	63,507
2025	502	203,676	40,735	162,941	6,714	91,899	64,329
2026	508	206,275	41,255	165,020	6,799	93,071	65,150
2027	514	208,871	41,774	167,097	6,885	94,243	65,970
2028	521	211,466	42,293	169,173	6,970	95,413	66,789
2029	527	214,059	42,811	171,248	7,055	96,584	67,608
2030	533	213,990	42,798	171,192	7,053	96,552	67,587

FUSION

Load Distribution & Staff Forecast

Planning

Yosemite Community College District (590)

Instructional Load by Campus

WSCH Distributed to Campuses or Other Locations

	Actual Fall			Forecast						
	2021	2022	2023	2024	2025	2026	2027	2028	2029	2030
Columbia College	19,393	21,820	23,956	24,129	24,441	24,753	25,065	25,376	25,687	25,679
Modesto Junior College	160,835	174,051	174,519	176,947	179,235	181,522	183,806	186,090	188,372	188,311
Yosemite District Office*	-	-	-	-	-	-	-	-	-	-
Total	180,228	195,871	198,475	201,076	203,676	206,275	208,871	211,466	214,059	213,990

FUSION**Load Distribution & Staff Forecast**

Planning

Yosemite Community College District (590)**Total District Library Load**

	Total Day-Graded	Number of Campuses	Initial ASF (3,795/Camp p)	First 3,000 Day Graded (3.83/DG)	Between 3k - 9k (3.39/DG)	Above 9,000 (2.94/DG)	Total ASF
(a)	(b)	(c)	(d)	(e)	(f)	(g)	(d+e+f+g)
Forecast							
2024	16,121	3	11,385	11,490	20,340	20,936	64,151
2025	16,116	3	11,385	11,490	20,340	20,921	64,136
2026	16,110	3	11,385	11,490	20,340	20,903	64,118
2027	16,105	3	11,385	11,490	20,340	20,889	64,104
2028	16,100	3	11,385	11,490	20,340	20,874	64,089
2029	16,095	3	11,385	11,490	20,340	20,859	64,074
2030	16,089	3	11,385	11,490	20,340	20,842	64,057

FUSION

Load Distribution & Staff Forecast

Planning

Library Load by Campus or Location

	Forecast						
	2024	2025	2026	2027	2028	2029	2030
Columbia College							
	7,698	7,696	7,694	7,692	7,691	7,689	7,687
	12%	12%	12%	12%	12%	12%	12%
Modesto Junior College							
	56,453	56,440	56,424	56,412	56,398	56,385	56,370
	88%	88%	88%	88%	88%	88%	88%
Yosemite District Office*							
	0	0	0	0	0	0	0
	0%	0%	0%	0%	0%	0%	0%
Total	64,151	64,136	64,118	64,104	64,089	64,074	64,057

FUSION

Load Distribution & Staff Forecast

Planning

Yosemite Community College District (590)
Total District AV, Radio, TV Load

	Total Day-Graded	Number of Campuses	Initial ASF (3,500/Camp p)	First 3,000 Day Graded (1.50/DG)	Between 3k - 9k (0.75/DG)	Above 9,000 (0.25/DG)	Total ASF
(a)	(b)	(c)	(d)	(e)	(f)	(g)	(d+e+f+g)
Forecast							
2024	16,121	3	10,500	4,500	4,500	1,780	21,280
2025	16,116	3	10,500	4,500	4,500	1,779	21,279
2026	16,110	3	10,500	4,500	4,500	1,778	21,278
2027	16,105	3	10,500	4,500	4,500	1,776	21,276
2028	16,100	3	10,500	4,500	4,500	1,775	21,275
2029	16,095	3	10,500	4,500	4,500	1,774	21,274
2030	16,089	3	10,500	4,500	4,500	1,772	21,272

FUSION

Load Distribution & Staff Forecast

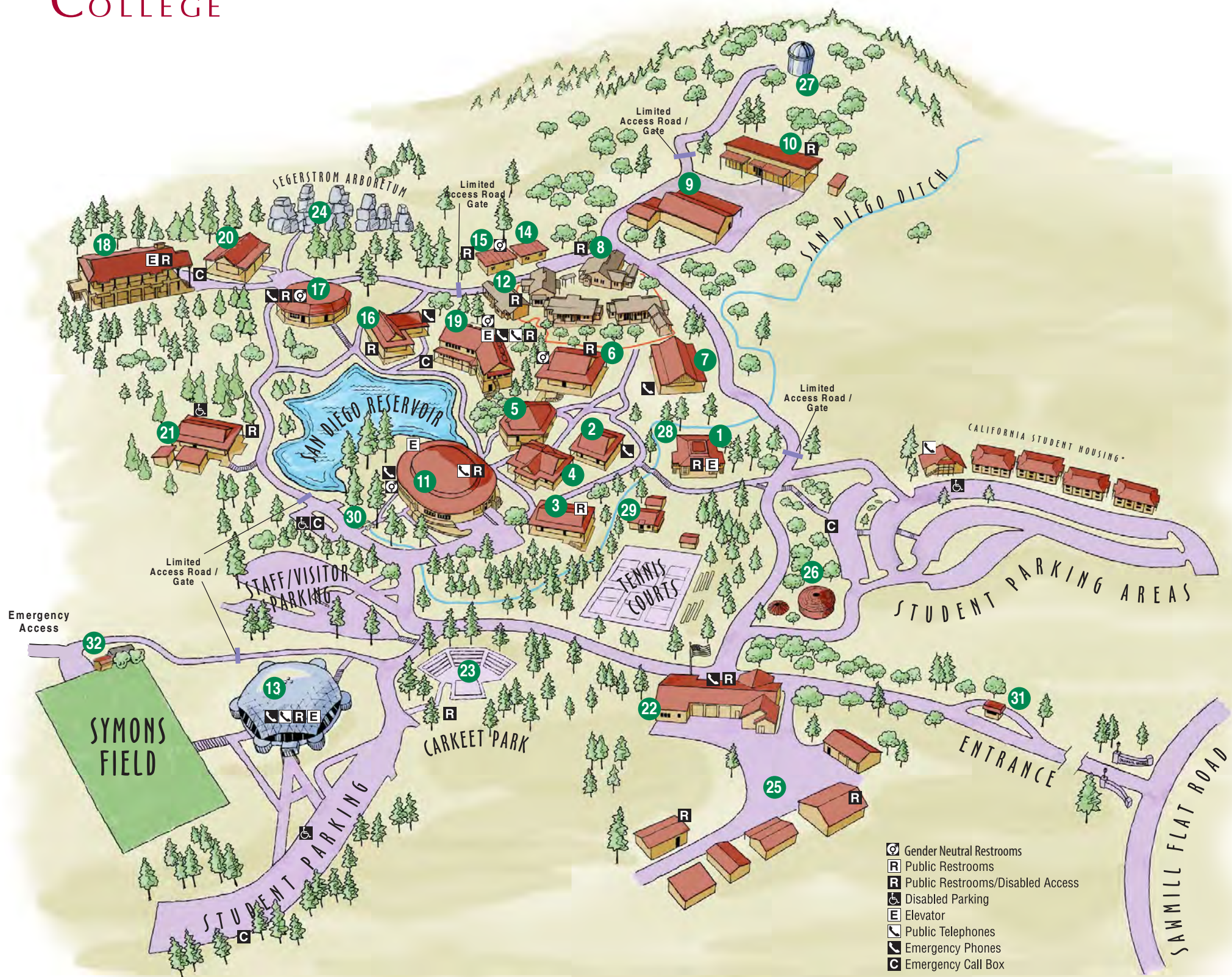
Planning

AV, Radio, TV Load by Campus or Location

	Forecast						
	2024	2025	2026	2027	2028	2029	2030
Columbia College							
	2,554	2,553	2,553	2,553	2,553	2,553	2,553
	12%	12%	12%	12%	12%	12%	12%
Modesto Junior College							
	18,726	18,726	18,725	18,723	18,722	18,721	18,719
	88%	88%	88%	88%	88%	88%	88%
Yosemite District Office*							
	0	0	0	0	0	0	0
	0%	0%	0%	0%	0%	0%	0%
Total	21,280	21,279	21,278	21,276	21,275	21,274	21,272



Columbia College Campus



IN CASE OF EMERGENCY, CALL 911
CAMPUS SECURITY (BLDG. 22) 588-5167

LEGEND

- 1 Alder
- 2 Aspen
- 3 Buckeye
- 4 Cedar
- 5 Dogwood
- 6 Fir
- 7 Juniper
- 8 Laurel (Child Care Center)
- 9 Madrone
- 10 Mahogany
- 11 Manzanita
(Administration, Student Services,
Instruction Office, Cellar Restaurant &
Cafeteria)

- 12 Maple
- 13 Oak Pavilion
- 14 Pinyon
- 15 Ponderosa
- 16 Redbud
- 17 Sequoia
- 18 Sugar Pine
- 19 Tamarack Hall (Library Media/Technology)
- 20 Toyon
- 21 Willow

- 22 Public Safety Center / Firehouse
- 23 Charles Segerstrom, Jr. Memorial Amphitheater
- 24 Segerstrom Arboretum Nature Trail
- 25 Warehouse, Shipping/Receiving, Transportation & Maintenance
- 26 Me-Wuk Cultural Center
- 27 Observatory
- 28 Start Point, Fitness Jogging Trail
- 29 Davis Cabin
- 30 Transit Stop
- 31 Information
- 32 Poison Oak

www.gocolumbia.edu

FUSION

Campus Capacity/Load Ratios

Planning

Yosemite Community College District (590)
Columbia College (591)

Campus Lecture Capacity/Load Ratio

No. Project										
	Lect ASF	WSCH	Occupancy	2025-26	2026-27	2027-28	2028-29	2029-30	2030-31	2031-32

Lecture Summary / Totals			2025-26	2026-27	2027-28	2028-29	2029-30	2030-31	2031-32
Lecture ASF	Actual*/Projected WSCH		10,168	10,297	10,427	10,556	10,686	10,682	10,679
17,375	Cumulative Capacity		27,536	27,536	27,536	27,536	27,536	27,536	27,536
	Capacity/Load Ratio		271%	267%	264%	261%	258%	258%	258%

FUSION

Campus Capacity/Load Ratios

Planning

Yosemite Community College District (590)
Columbia College (591)

Campus Lab Capacity/Load Ratio

No.	Project										
		Lab ASF	WSCH	Occupancy	2025-26	2026-27	2027-28	2028-29	2029-30	2030-31	2031-32

Lab Summary / Totals				2025-26	2026-27	2027-28	2028-29	2029-30	2030-31	2031-32
35,970	Lab ASF	Actual*/Projected WSCH		8,408	8,515	8,622	8,729	8,836	8,834	8,831
		Cumulative Capacity		13,272	13,272	13,272	13,272	13,272	13,272	13,272
		Capacity/Load Ratio		158%	156%	154%	152%	150%	150%	150%

FUSION

Campus Capacity/Load Ratios

Planning

Yosemite Community College District (590)
Columbia College (591)

Campus Office Capacity/Load Ratio

No. Project										
	Off ASF	FTE	Occupancy	2025-26	2026-27	2027-28	2028-29	2029-30	2030-31	2031-32
2 Affordable Student Housing Grant										
	50	0	2027-28			126				
Columbia College						143%				
Office Summary / Totals				2025-26	2026-27	2027-28	2028-29	2029-30	2030-31	2031-32
Office ASF	Actual*/Projected FTE			86	87	88	89	90	91	92
25,269	Cumulative Capacity			126	126	126	126	126	126	126
	Capacity/Load Ratio			147%	145%	143%	142%	140%	138%	137%

FUSION

Campus Capacity/Load Ratios

Planning

Yosemite Community College District (590)
Columbia College (591)

Campus Library Capacity/Load Ratio

No. Project		Lib ASF	Occupancy	2025-26	2026-27	2027-28	2028-29	2029-30	2030-31	2031-32
2 Affordable Student Housing Grant		931	2027-28			13,184				
Columbia College						171%				
Library Summary / Totals				2025-26	2026-27	2027-28	2028-29	2029-30	2030-31	2031-32
Library ASF		Actual*/Projected ASF		7,696	7,694	7,692	7,691	7,689	7,687	7,685
12,253		Cumulative Capacity		12,253	12,253	12,253	13,184	13,184	13,184	13,184
		Capacity/Load Ratio		159%	159%	159%	171%	171%	172%	172%

FUSION

Campus Capacity/Load Ratios

Planning

Yosemite Community College District (590)
Columbia College (591)

Campus AV/TV Capacity/Load Ratio

No. Project		AV/TV ASF Occupancy	2025-26	2026-27	2027-28	2028-29	2029-30	2030-31	2031-32
-------------	--	---------------------	---------	---------	---------	---------	---------	---------	---------

AV/TV Summary / Totals		2025-26	2026-27	2027-28	2028-29	2029-30	2030-31	2031-32
AV/TV ASF	Actual*/Projected ASF	2,553	2,553	2,553	2,553	2,553	2,553	2,553
1,498	Cumulative Capacity	1,498	1,498	1,498	1,498	1,498	1,498	1,498
	Capacity/Load Ratio	59%	59%	59%	59%	59%	59%	59%

FUSION

Load Distribution & Staff Forecast

Planning

Yosemite Community College District (590)
Columbia College (591)

Campus Load Distribution

	Instructional Staff FTE	Total Campus WSCH	Off-Campus WSCH	On-Campus WSCH	P.E. Laboratory WSCH	On-Campus Lecture WSCH	On-Campus Laboratory
Actual Fall							
2022	62	21,820	10,903	10,917	645	5,943	4,328
2023	83	23,956	11,966	11,990	499	6,459	5,032
Forecast							
2024	85	24,129	4,826	19,303	965	10,038	8,300
2025	86	24,441	4,888	19,553	978	10,168	8,408
2026	87	24,753	4,951	19,802	990	10,297	8,515
2027	88	25,065	5,013	20,052	1,003	10,427	8,622
2028	89	25,376	5,075	20,301	1,015	10,556	8,729
2029	90	25,687	5,137	20,550	1,027	10,686	8,836
2030	91	25,679	5,136	20,543	1,027	10,682	8,834

FUSION

Load Distribution & Staff Forecast

Planning

Yosemite Community College District (590)
Columbia College (591)

FTE Instruction Staff Worksheet - Fall 2024

College Instructional Staff, Fall Term. Included are all certificated staff for day, extended day, and adult education except those whose office is located off-campus.

Staff Type (a)	Total Certificated Instructional and Statutory Staff FTE (b)	Non-Instructional Portion of FTE (c)	Net Total Instructional and Statutory Staff FTE (b-c)
Instructor	65	0	65
Counselor Include certified special program coordinators, economic opportunity program, coordinators, statutory and Title 5 required staff, et. al.	7	0	7
Department Administrator	13	0	13
Librarian Include certificated director of audio/visual, et. al.	1	1	0
Institutional Administrator Include certificated persons with responsibilities covering the entire institution, such as Superintendent, Assistant Superintendent, President, Dean of Instruction, Director of Data Processing, et. al.	3	3	0
Projected 2024 Totals	89	4	85

Column (b) is the total number of Column (a) distributed to categories
Column (c) is the fraction of time express as Full-Time Equivalents devoted to noninstructional work.
Counselors, department administrators, and statutorily required staff are counted as if they had no noninstructional duties.

FUSION

Load Distribution & Staff Forecast

Planning

Yosemite Community College District (590)

Columbia College (591)

FTE Instruction Staff Worksheet - Fall 2025

College Instructional Staff, Fall Term. Included are all certificated staff for day, extended day, and adult education except those whose office is located off-campus.

Staff Type (a)	Total Certificated Instructional and Statutory Staff FTE (b)	Non-Instructional Portion of FTE (c)	Net Total Instructional and Statutory Staff FTE (b-c)
Instructor	66	0	66
Counselor Include certified special program coordinators, economic opportunity program, coordinators, statutory and Title 5 required staff, et. al.	7	0	7
Department Administrator	13	0	13
Librarian Include certificated director of audio/visual, et. al.	1	1	0
Institutional Administrator Include certificated persons with responsibilities covering the entire institution, such as Superintendent, Assistant Superintendent, President, Dean of Instruction, Director of Data Processing, et. al.	3	3	0
Projected 2025 Totals	90	4	86

Column (b) is the total number of Column (a) distributed to categories

Column (c) is the fraction of time express as Full-Time Equivalents devoted to noninstructional work.

Counselors, department administrators, and statutorily required staff are counted as if they had no noninstructional duties.

FUSION**Load Distribution & Staff Forecast**

Planning

Yosemite Community College District (590)**Columbia College (591)****FTE Instruction Staff Worksheet - Fall 2026**

College Instructional Staff, Fall Term. Included are all certificated staff for day, extended day, and adult education except those whose office is located off-campus.

Staff Type (a)	Total Certificated Instructional and Statutory Staff FTE (b)	Non-Instructional Portion of FTE (c)	Net Total Instructional and Statutory Staff FTE (b-c)
Instructor	67	0	67
Counselor Include certified special program coordinators, economic opportunity program, coordinators, statutory and Title 5 required staff, et. al.	7	0	7
Department Administrator	13	0	13
Librarian Include certificated director of audio/visual, et. al.	1	1	0
Institutional Administrator Include certificated persons with responsibilities covering the entire institution, such as Superintendent, Assistant Superintendent, President, Dean of Instruction, Director of Data Processing, et. al.	3	3	0
Projected 2026 Totals	91	4	87

Column (b) is the total number of Column (a) distributed to categories

Column (c) is the fraction of time expressed as Full-Time Equivalents devoted to noninstructional work.

Counselors, department administrators, and statutorily required staff are counted as if they had no noninstructional duties.

FUSION**Load Distribution & Staff Forecast**

Planning

Yosemite Community College District (590)**Columbia College (591)****FTE Instruction Staff Worksheet - Fall 2027**

College Instructional Staff, Fall Term. Included are all certificated staff for day, extended day, and adult education except those whose office is located off-campus.

Staff Type (a)	Total Certificated Instructional and Statutory Staff FTE (b)	Non-Instructional Portion of FTE (c)	Net Total Instructional and Statutory Staff FTE (b-c)
Instructor	68	0	68
Counselor Include certified special program coordinators, economic opportunity program, coordinators, statutory and Title 5 required staff, et. al.	7	0	7
Department Administrator	13	0	13
Librarian Include certificated director of audio/visual, et. al.	1	1	0
Institutional Administrator Include certificated persons with responsibilities covering the entire institution, such as Superintendent, Assistant Superintendent, President, Dean of Instruction, Director of Data Processing, et. al.	3	3	0
Projected 2027 Totals	92	4	88

Column (b) is the total number of Column (a) distributed to categories

Column (c) is the fraction of time expressed as Full-Time Equivalents devoted to noninstructional work.

Counselors, department administrators, and statutorily required staff are counted as if they had no noninstructional duties.

FUSION

Load Distribution & Staff Forecast

Planning

Yosemite Community College District (590)

Columbia College (591)

FTE Instruction Staff Worksheet - Fall 2028

College Instructional Staff, Fall Term. Included are all certificated staff for day, extended day, and adult education except those whose office is located off-campus.

Staff Type (a)	Total Certificated Instructional and Statutory Staff FTE (b)	Non-Instructional Portion of FTE (c)	Net Total Instructional and Statutory Staff FTE (b-c)
Instructor	69	0	69
Counselor Include certified special program coordinators, economic opportunity program, coordinators, statutory and Title 5 required staff, et. al.	7	0	7
Department Administrator	13	0	13
Librarian Include certificated director of audio/visual, et. al.	1	1	0
Institutional Administrator Include certificated persons with responsibilities covering the entire institution, such as Superintendent, Assistant Superintendent, President, Dean of Instruction, Director of Data Processing, et. al.	3	3	0
Projected 2028 Totals	93	4	89

Column (b) is the total number of Column (a) distributed to categories

Column (c) is the fraction of time express as Full-Time Equivalents devoted to noninstructional work.

Counselors, department administrators, and statutorily required staff are counted as if they had no noninstructional duties.

FUSION**Load Distribution & Staff Forecast**

Planning

Yosemite Community College District (590)**Columbia College (591)****FTE Instruction Staff Worksheet - Fall 2029**

College Instructional Staff, Fall Term. Included are all certificated staff for day, extended day, and adult education except those whose office is located off-campus.

Staff Type (a)	Total Certificated Instructional and Statutory Staff FTE (b)	Non-Instructional Portion of FTE (c)	Net Total Instructional and Statutory Staff FTE (b-c)
Instructor	70	0	70
Counselor Include certified special program coordinators, economic opportunity program, coordinators, statutory and Title 5 required staff, et. al.	7	0	7
Department Administrator	13	0	13
Librarian Include certificated director of audio/visual, et. al.	1	1	0
Institutional Administrator Include certificated persons with responsibilities covering the entire institution, such as Superintendent, Assistant Superintendent, President, Dean of Instruction, Director of Data Processing, et. al.	3	3	0
Projected 2029 Totals	94	4	90

Column (b) is the total number of Column (a) distributed to categories

Column (c) is the fraction of time expressed as Full-Time Equivalents devoted to noninstructional work.

Counselors, department administrators, and statutorily required staff are counted as if they had no noninstructional duties.

FUSION**Load Distribution & Staff Forecast**

Planning

Yosemite Community College District (590)**Columbia College (591)****FTE Instruction Staff Worksheet - Fall 2030**

College Instructional Staff, Fall Term. Included are all certificated staff for day, extended day, and adult education except those whose office is located off-campus.

Staff Type (a)	Total Certificated Instructional and Statutory Staff FTE (b)	Non-Instructional Portion of FTE (c)	Net Total Instructional and Statutory Staff FTE (b-c)
Instructor	71	0	71
Counselor Include certified special program coordinators, economic opportunity program, coordinators, statutory and Title 5 required staff, et. al.	7	0	7
Department Administrator	13	0	13
Librarian Include certificated director of audio/visual, et. al.	1	1	0
Institutional Administrator Include certificated persons with responsibilities covering the entire institution, such as Superintendent, Assistant Superintendent, President, Dean of Instruction, Director of Data Processing, et. al.	3	3	0
Projected 2030 Totals	95	4	91

Column (b) is the total number of Column (a) distributed to categories

Column (c) is the fraction of time expressed as Full-Time Equivalents devoted to noninstructional work.

Counselors, department administrators, and statutorily required staff are counted as if they had no noninstructional duties.

FUSION**Cumulative Sum of Existing & Proposed Space (2025-2031)**

Planning

Yosemite Community College District (590)**Columbia College (591)**

Priority & Year of Occupancy (a)	Classroom 100's (b)	Laboratory 200's (c)	Office 300's (d)	Library 400's (e)	AV Radio TV 530-535 (f)	P.E. 520-525 (g)	Assembly 610 & 615 (h)	Inactive 050-070 (i)	All Other Areas (j)	Total ASF (k)
Total ASF	17,375	35,970	25,269	12,253	1,498	34,892	4,558	0	29,005	160,820
2	2027	Affordable Student Housing Grant								
	0	0	50	931	0	0	0	0	26,404	27,385
	17,375	35,970	25,319	13,184	1,498	34,892	4,558	0	55,409	188,205
Total Existing and Proposed Space										
	17,375	35,970	25,319	13,184	1,498	34,892	4,558	0	55,409	188,205

FUSION**Capacity of Net Existing On-Campus ASF**

Planning

Yosemite Community College District (590)**Columbia College (591)****Classrooms, Classroom Service (Room Use Code 100s)**

Summary	Total Net ASF	ASF per 100 WSCH	Total Capacity WSCH
Classroom Space	17,375	63.1	27,536

Laboratories & Laboratory Service Area (Room Use Codes 210, 215, 220, 225, 230, 235, 255)

TOP Code	Net ASF	ASF per 100 WSCH	Capacity WSCH
0114 - Forestry	2,050	492.0	417
0401 - Biology, General	5,913	235.0	2,516
0599 - Other Business and Management	31	128.0	24
0701 - Information Technology, General	1,466	171.0	857
0702 - Computer Information Systems	1,334	171.0	780
0948 - Automotive Technology	6,201	856.0	724
0956 - Manufacturing and Industrial Technology	3,111	385.0	808
1002 - Art (Painting, Drawing and Sculpture)	1,886	257.0	734
1004 - Music	399	257.0	155
1011 - Photography	540	257.0	210
1306 - Nutrition, Foods, and Culinary Arts	3,700	257.0	1,440
1700 - Mathematics	3,503	150.0	2,335
1901 - Physical Sciences, General	2,668	257.0	1,038
1905 - Chemistry, General	1,539	257.0	599
1930 - Earth Science	1,231	257.0	479
4901 - Liberal Arts and Sciences, General	176	257.0	68
4930 - General Studies	222	257.0	86
Summary	Total Net ASF	ASF per 100 WSCH	Total Capacity WSCH
Lab Space	35,970	271.0	13,272

Office & Office Service Areas (Room Use Code 300s)

Summary	Total Net ASF	ASF per FTE	Total Capacity FTE
Office Space	25,269	200.0	126

FUSION

Project Intent & Scope

Planning

Yosemite Community College District (590)
Columbia College (591)

District Priority & Project: 2 Affordable Student Housing Grant

Project Type:
Total Estimated Cost: \$51,901,687
Anticipated Source(s) of Funds: State and Non-State
Type of Construction:
Seismic Retrofit:
If Existing - Age:
If Existing - Condition:

Anticipated Time Schedule

	Land Acquisition	Preliminary Plans	Working Drawings	Construction	Equipment	Occupancy
Year	0	2024	2024	2024	2024	2027-28
Estimated Cost	\$0	\$1,910,852	\$1,806,152	\$46,971,064	\$1,213,620	

Explain why this project is needed:

In direct compliance with Education Code 17201, Yosemite Community College District/Columbia College (CC) is requesting \$51,901,687 in today's dollars/\$61,303,000 at the Midpoint of Construction to plan and construct much needed housing for 124 low-income students, who are enrolled in twelve credit hours or more. It will be designed to promote student completion and made available to low-income students that meet the requirements of Ed. Code 17201.

FUSION

Project Intent & Scope

Planning

Yosemite Community College District (590)
Columbia College (591)

District Priority & Project: 2 Affordable Student Housing Grant

Outline of Project Space - Buildings and Remodelings

	Classroom 100s	Laboratory 210-255	Office 300s	Library 400s	AV/TV 530-535	All Other	Total ASF
Project Primary	0	0	50	931	0	26,404	27,385
Project Secondary	0	0	0	0	0	0	0
Project Net ASF	0	0	50	931	0	26,404	27,385

Project Net Capacity

Classrooms, Classroom Service (Room Use Code 100s)

Summary	Net ASF	ASF per 100 WSCH	Capacity WSCH
Classroom Space	0	0.0	0

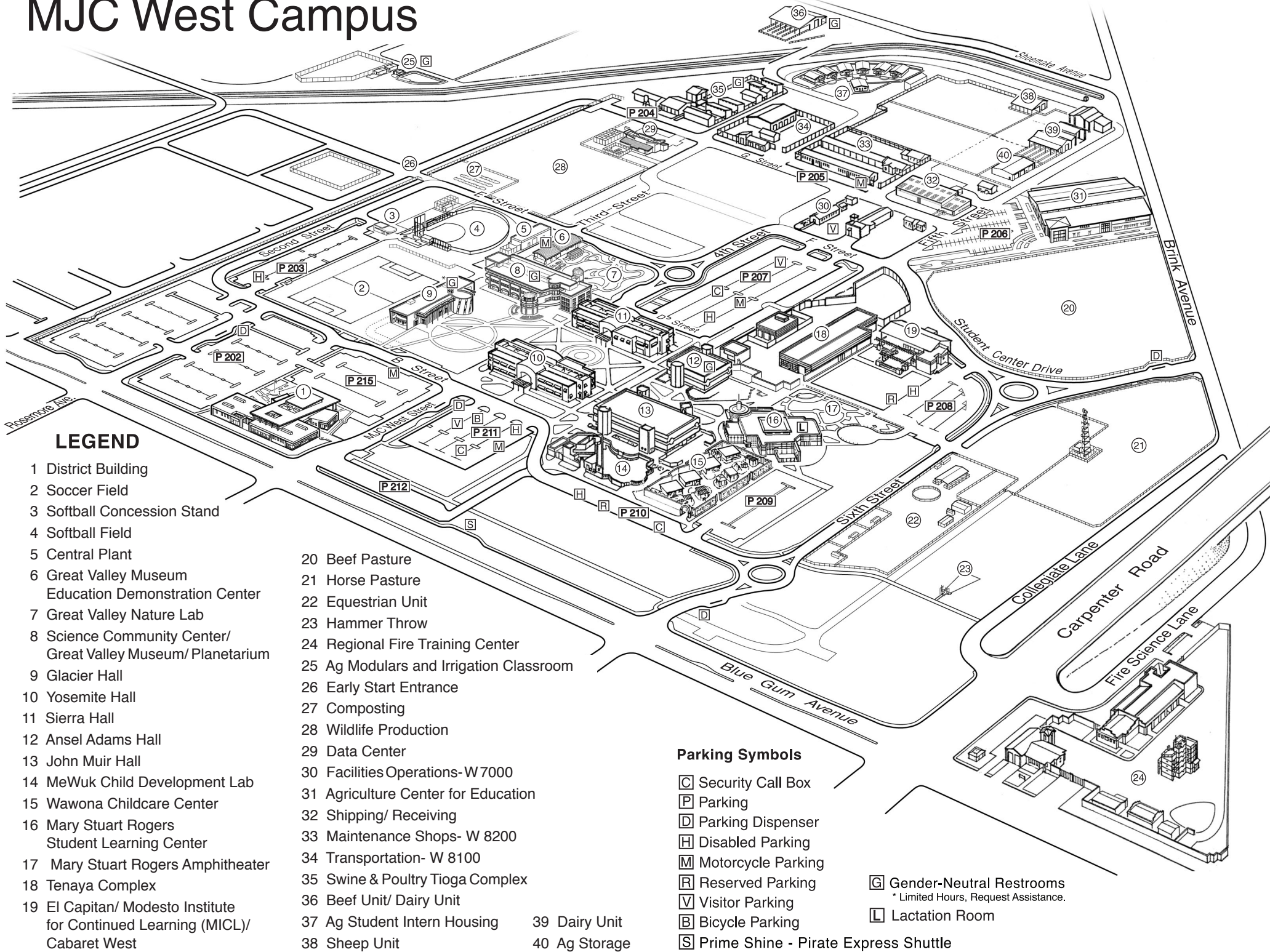
Laboratories & Laboratory Service Area (Room Use Codes 210, 215, 220, 225, 230, 235, 255)

TOP Code	Primary Effect			Secondary Effect		
	Net ASF	ASF per 100 WSCH	Capacity WSCH	Net ASF	ASF per 100 WSCH	Capacity WSCH
-						
Summary	Net ASF			Capacity WSCH		
Lab Space	0			0		

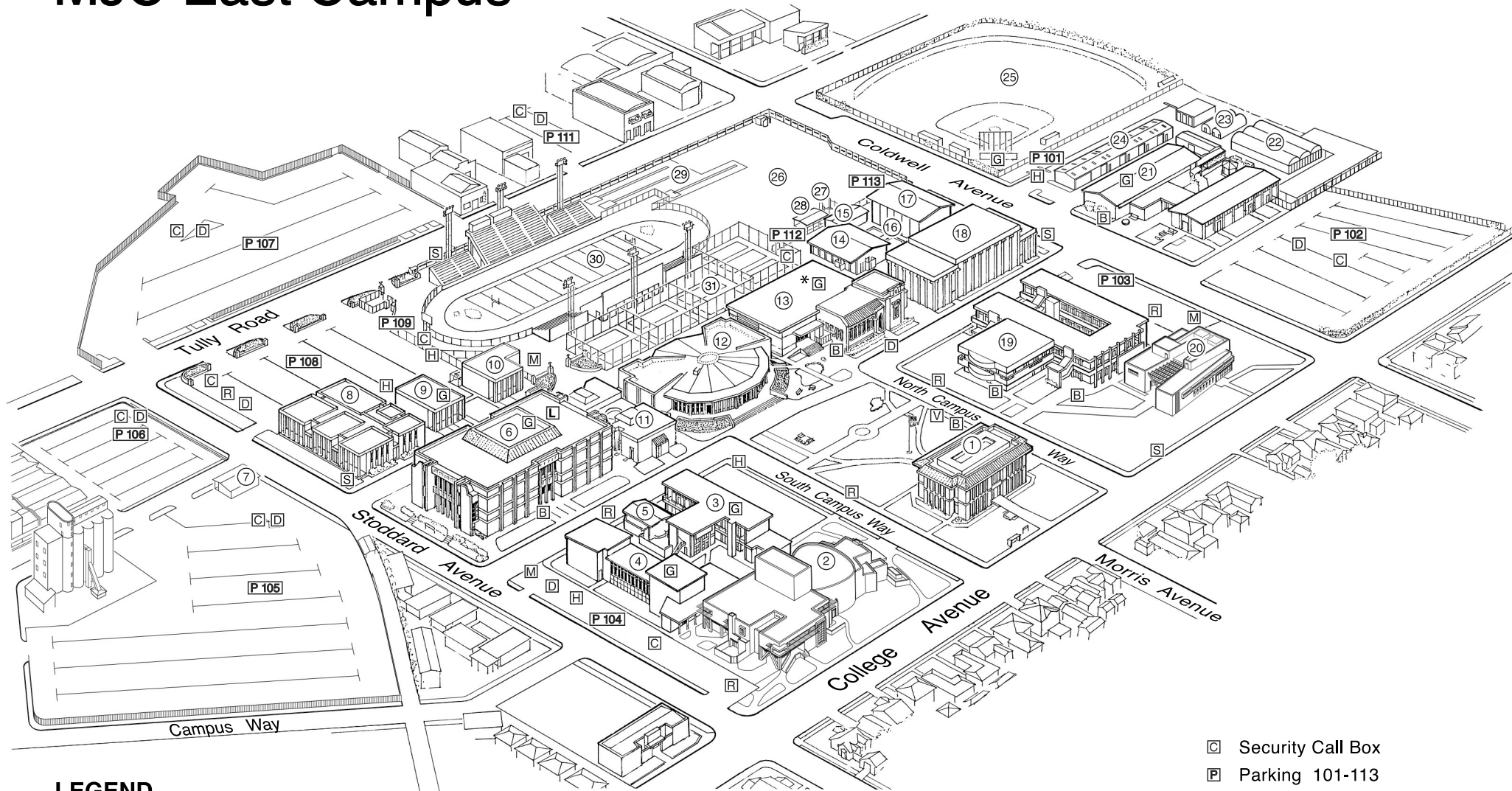
Office & Office Service Areas (Room Use Code 300s)

Summary	Net ASF	ASF per FTE	Capacity FTE
Office Space	50	200.0	0.25

MJC West Campus



MJC East Campus



LEGEND

- | | | | | |
|---------------------------------------|--|--|-----------------------|--|
| 1 Administration
(Morris Memorial) | 8 Electronics | 16 Swimming Pool | 24 Ag Storage | Security Call Box |
| 2 Performing &
Media Arts Center | 9 Journalism/ Campus Safety
& Disability Services | 17 Physical Education- Women | 25 Athletic Field #2 | Parking 101-113 |
| 3 Art | 10 Classroom Annex | 18 Gymnasium | 26 Athletic Field #1 | Parking Dispenser |
| 4 Music | 11 Forum | 19 Center for
Advanced Technologies | 27 Hammer Throw | Disabled Parking |
| 5 Art Gallery | 12 Student Center | 20 Student Services | 28 P.E. Outdoor Space | Motorcycle Parking |
| 6 Founders' Hall | 13 Library & Learning Center | 21 Agriculture | 29 Jumps Area | Reserved Parking |
| 7 Facilities Operations | 14 Physical Education- Men | 22 Greenhouse | 30 Stadium | Visitor Parking |
| | 15 Physical Education Offices | 23 Propagation House | 31 Tennis Courts | Bicycle Parking |
| | | | | Gender-Neutral Restrooms
* Limited Hours, Request Assistance. |
| | | | | Lactation Room |
| | | | | Prime Shine -
Pirate Express Shuttle |

FUSION

Campus Capacity/Load Ratios

Planning

Yosemite Community College District (590)
Modesto Junior College (592)

Campus Lecture Capacity/Load Ratio

No.	Project										
		Lect ASF	WSCH	Occupancy	2025-26	2026-27	2027-28	2028-29	2029-30	2030-31	2031-32

Lecture Summary / Totals			2025-26	2026-27	2027-28	2028-29	2029-30	2030-31	2031-32
93,552	Lecture ASF	Actual*/Projected WSCH	81,731	82,774	83,816	84,857	85,898	85,870	85,842
	Cumulative Capacity		163,552	163,552	163,552	163,552	163,552	163,552	163,552
	Capacity/Load Ratio		200%	198%	195%	193%	190%	190%	191%

FUSION

Campus Capacity/Load Ratios

Planning

Yosemite Community College District (590)
Modesto Junior College (592)

Campus Lab Capacity/Load Ratio

No. Project									
Lab ASF		WSCH	Occupancy	2025-26	2026-27	2027-28	2028-29	2029-30	2030-31
1 Music Building Modernization									
-322		-125	2030-31						61,121
Modesto Junior College									104%
Lab Summary / Totals				2025-26	2026-27	2027-28	2028-29	2029-30	2030-31
Lab ASF		Actual*/Projected WSCH		55,921	56,635	57,348	58,060	58,772	58,753
164,857		Cumulative Capacity		61,246	61,246	61,246	61,246	61,246	61,121
		Capacity/Load Ratio		110%	108%	107%	105%	104%	104%

FUSION

Campus Capacity/Load Ratios

Planning

Yosemite Community College District (590)
Modesto Junior College (592)

Campus Office Capacity/Load Ratio

No. Project									
Off ASF		FTE	Occupancy	2025-26	2026-27	2027-28	2028-29	2029-30	2030-31
1 Music Building Modernization									
-341		-2	2030-31						631
Modesto Junior College									143%
Office Summary / Totals				2025-26	2026-27	2027-28	2028-29	2029-30	2030-31
Office ASF		Actual*/Projected FTE		416	421	426	432	437	442
110,743		Cumulative Capacity		633	633	633	633	633	631
		Capacity/Load Ratio		152%	150%	149%	147%	145%	141%

FUSION

Campus Capacity/Load Ratios

Planning

Yosemite Community College District (590)
Modesto Junior College (592)

Campus Library Capacity/Load Ratio

No.	Project	Lib ASF	Occupancy	2025-26	2026-27	2027-28	2028-29	2029-30	2030-31	2031-32
-----	---------	---------	-----------	---------	---------	---------	---------	---------	---------	---------

Library Summary / Totals			2025-26	2026-27	2027-28	2028-29	2029-30	2030-31	2031-32
Library ASF 47,636	Actual*/Projected ASF		56,440	56,424	56,411	56,398	56,385	56,370	56,357
	Cumulative Capacity		47,636	47,636	47,636	47,636	47,636	47,636	47,636
	Capacity/Load Ratio		84%	84%	84%	84%	84%	85%	85%

FUSION

Campus Capacity/Load Ratios

Planning

Yosemite Community College District (590)
Modesto Junior College (592)

Campus AV/TV Capacity/Load Ratio

No. Project		AV/TV ASF Occupancy	2025-26	2026-27	2027-28	2028-29	2029-30	2030-31	2031-32
1 Music Building Modernization		944 2030-31						9,316	
Modesto Junior College								50%	
AV/TV Summary / Totals			2025-26	2026-27	2027-28	2028-29	2029-30	2030-31	2031-32
AV/TV ASF	Actual*/Projected ASF		18,726	18,724	18,723	18,722	18,721	18,720	18,718
8,372	Cumulative Capacity		8,372	8,372	8,372	8,372	8,372	8,372	9,316
	Capacity/Load Ratio		45%	45%	45%	45%	45%	45%	50%

FUSION**Load Distribution & Staff Forecast**

Planning

Yosemite Community College District (590)**Modesto Junior College (592)****Campus Load Distribution**

	Instructional Staff FTE	Total Campus WSCH	Off-Campus WSCH	On-Campus WSCH	P.E. Laboratory WSCH	On-Campus Lecture WSCH	On-Campus Laboratory
Actual Fall							
2022	409	174,051	98,461	75,590	4,445	48,325	22,821
2023	406	174,519	91,588	82,931	4,594	54,270	24,067
Forecast							
2024	411	176,947	35,389	141,558	5,662	80,688	55,207
2025	416	179,235	35,847	143,388	5,736	81,731	55,921
2026	421	181,522	36,304	145,218	5,809	82,774	56,635
2027	426	183,806	36,761	147,045	5,882	83,816	57,348
2028	432	186,090	37,218	148,872	5,955	84,857	58,060
2029	437	188,372	37,674	150,698	6,028	85,898	58,772
2030	442	188,311	37,662	150,649	6,026	85,870	58,753

FUSION

Load Distribution & Staff Forecast

Planning

Yosemite Community College District (590)

Modesto Junior College (592)

FTE Instruction Staff Worksheet - Fall 2024

College Instructional Staff, Fall Term. Included are all certificated staff for day, extended day, and adult education except those whose office is located off-campus.

Staff Type (a)	Total Certificated Instructional and Statutory Staff FTE (b)	Non-Instructional Portion of FTE (c)	Net Total Instructional and Statutory Staff FTE (b-c)
Instructor	341	0	341
Counselor Include certified special program coordinators, economic opportunity program, coordinators, statutory and Title 5 required staff, et. al.	29	0	29
Department Administrator	41	0	41
Librarian Include certificated director of audio/visual, et. al.	4	4	0
Institutional Administrator Include certificated persons with responsibilities covering the entire institution, such as Superintendent, Assistant Superintendent, President, Dean of Instruction, Director of Data Processing, et. al.	4	4	0
Projected 2024 Totals	419	8	411

Column (b) is the total number of Column (a) distributed to categories

Column (c) is the fraction of time express as Full-Time Equivalents devoted to noninstructional work.

Counselors, department administrators, and statutorily required staff are counted as if they had no noninstructional duties.

FUSION

Load Distribution & Staff Forecast

Planning

Yosemite Community College District (590)

Modesto Junior College (592)

FTE Instruction Staff Worksheet - Fall 2025

College Instructional Staff, Fall Term. Included are all certificated staff for day, extended day, and adult education except those whose office is located off-campus.

Staff Type (a)	Total Certificated Instructional and Statutory Staff FTE (b)	Non-Instructional Portion of FTE (c)	Net Total Instructional and Statutory Staff FTE (b-c)
Instructor	346	0	346
Counselor Include certified special program coordinators, economic opportunity program, coordinators, statutory and Title 5 required staff, et. al.	29	0	29
Department Administrator	41	0	41
Librarian Include certificated director of audio/visual, et. al.	4	4	0
Institutional Administrator Include certificated persons with responsibilities covering the entire institution, such as Superintendent, Assistant Superintendent, President, Dean of Instruction, Director of Data Processing, et. al.	4	4	0
Projected 2025 Totals	424	8	416

Column (b) is the total number of Column (a) distributed to categories

Column (c) is the fraction of time express as Full-Time Equivalents devoted to noninstructional work.

Counselors, department administrators, and statutorily required staff are counted as if they had no noninstructional duties.

FUSION**Load Distribution & Staff Forecast**

Planning

Yosemite Community College District (590)**Modesto Junior College (592)****FTE Instruction Staff Worksheet - Fall 2026**

College Instructional Staff, Fall Term. Included are all certificated staff for day, extended day, and adult education except those whose office is located off-campus.

Staff Type (a)	Total Certificated Instructional and Statutory Staff FTE (b)	Non-Instructional Portion of FTE (c)	Net Total Instructional and Statutory Staff FTE (b-c)
Instructor	351	0	351
Counselor Include certified special program coordinators, economic opportunity program, coordinators, statutory and Title 5 required staff, et. al.	29	0	29
Department Administrator	41	0	41
Librarian Include certificated director of audio/visual, et. al.	4	4	0
Institutional Administrator Include certificated persons with responsibilities covering the entire institution, such as Superintendent, Assistant Superintendent, President, Dean of Instruction, Director of Data Processing, et. al.	4	4	0
Projected 2026 Totals	429	8	421

Column (b) is the total number of Column (a) distributed to categories

Column (c) is the fraction of time expressed as Full-Time Equivalents devoted to noninstructional work.

Counselors, department administrators, and statutorily required staff are counted as if they had no noninstructional duties.

FUSION**Load Distribution & Staff Forecast**

Planning

Yosemite Community College District (590)**Modesto Junior College (592)****FTE Instruction Staff Worksheet - Fall 2027**

College Instructional Staff, Fall Term. Included are all certificated staff for day, extended day, and adult education except those whose office is located off-campus.

Staff Type (a)	Total Certificated Instructional and Statutory Staff FTE (b)	Non-Instructional Portion of FTE (c)	Net Total Instructional and Statutory Staff FTE (b-c)
Instructor	356	0	356
Counselor Include certified special program coordinators, economic opportunity program, coordinators, statutory and Title 5 required staff, et. al.	29	0	29
Department Administrator	41	0	41
Librarian Include certificated director of audio/visual, et. al.	4	4	0
Institutional Administrator Include certificated persons with responsibilities covering the entire institution, such as Superintendent, Assistant Superintendent, President, Dean of Instruction, Director of Data Processing, et. al.	4	4	0
Projected 2027 Totals	434	8	426

Column (b) is the total number of Column (a) distributed to categories

Column (c) is the fraction of time expressed as Full-Time Equivalents devoted to noninstructional work.

Counselors, department administrators, and statutorily required staff are counted as if they had no noninstructional duties.

FUSION**Load Distribution & Staff Forecast**

Planning

Yosemite Community College District (590)**Modesto Junior College (592)****FTE Instruction Staff Worksheet - Fall 2028**

College Instructional Staff, Fall Term. Included are all certificated staff for day, extended day, and adult education except those whose office is located off-campus.

Staff Type (a)	Total Certificated Instructional and Statutory Staff FTE (b)	Non-Instructional Portion of FTE (c)	Net Total Instructional and Statutory Staff FTE (b-c)
Instructor	362	0	362
Counselor Include certified special program coordinators, economic opportunity program, coordinators, statutory and Title 5 required staff, et. al.	29	0	29
Department Administrator	41	0	41
Librarian Include certificated director of audio/visual, et. al.	4	4	0
Institutional Administrator Include certificated persons with responsibilities covering the entire institution, such as Superintendent, Assistant Superintendent, President, Dean of Instruction, Director of Data Processing, et. al.	4	4	0
Projected 2028 Totals	440	8	432

Column (b) is the total number of Column (a) distributed to categories

Column (c) is the fraction of time expressed as Full-Time Equivalents devoted to noninstructional work.

Counselors, department administrators, and statutorily required staff are counted as if they had no noninstructional duties.

FUSION**Load Distribution & Staff Forecast**

Planning

Yosemite Community College District (590)**Modesto Junior College (592)****FTE Instruction Staff Worksheet - Fall 2029**

College Instructional Staff, Fall Term. Included are all certificated staff for day, extended day, and adult education except those whose office is located off-campus.

Staff Type (a)	Total Certificated Instructional and Statutory Staff FTE (b)	Non-Instructional Portion of FTE (c)	Net Total Instructional and Statutory Staff FTE (b-c)
Instructor	367	0	367
Counselor Include certified special program coordinators, economic opportunity program, coordinators, statutory and Title 5 required staff, et. al.	29	0	29
Department Administrator	41	0	41
Librarian Include certificated director of audio/visual, et. al.	4	4	0
Institutional Administrator Include certificated persons with responsibilities covering the entire institution, such as Superintendent, Assistant Superintendent, President, Dean of Instruction, Director of Data Processing, et. al.	4	4	0
Projected 2029 Totals	445	8	437

Column (b) is the total number of Column (a) distributed to categories

Column (c) is the fraction of time expressed as Full-Time Equivalents devoted to noninstructional work.

Counselors, department administrators, and statutorily required staff are counted as if they had no noninstructional duties.

FUSION**Load Distribution & Staff Forecast**

Planning

Yosemite Community College District (590)**Modesto Junior College (592)****FTE Instruction Staff Worksheet - Fall 2030**

College Instructional Staff, Fall Term. Included are all certificated staff for day, extended day, and adult education except those whose office is located off-campus.

Staff Type (a)	Total Certificated Instructional and Statutory Staff FTE (b)	Non-Instructional Portion of FTE (c)	Net Total Instructional and Statutory Staff FTE (b-c)
Instructor	372	0	372
Counselor Include certified special program coordinators, economic opportunity program, coordinators, statutory and Title 5 required staff, et. al.	29	0	29
Department Administrator	41	0	41
Librarian Include certificated director of audio/visual, et. al.	4	4	0
Institutional Administrator Include certificated persons with responsibilities covering the entire institution, such as Superintendent, Assistant Superintendent, President, Dean of Instruction, Director of Data Processing, et. al.	4	4	0
Projected 2030 Totals	450	8	442

Column (b) is the total number of Column (a) distributed to categories

Column (c) is the fraction of time expressed as Full-Time Equivalents devoted to noninstructional work.

Counselors, department administrators, and statutorily required staff are counted as if they had no noninstructional duties.

FUSION**Cumulative Sum of Existing & Proposed Space (2025-2031)**

Planning

Yosemite Community College District (590)**Modesto Junior College (592)**

Priority & Year of Occupancy (a)	Classroom 100's (b)	Laboratory 200's (c)	Office 300's (d)	Library 400's (e)	AV Radio TV 530-535 (f)	P.E. 520-525 (g)	Assembly 610 & 615 (h)	Inactive 050-070 (i)	All Other Areas (j)	Total ASF (k)
Total ASF	93,552	164,857	110,743	47,636	8,372	40,210	80,053	10,243	244,332	799,998
1	2030	Music Building Modernization								
	0	-322	-341	0	944	0	0	0	-437	-156
	93,552	164,535	110,402	47,636	9,316	40,210	80,053	10,243	243,895	799,842
Total Existing and Proposed Space										
	93,552	164,535	110,402	47,636	9,316	40,210	80,053	10,243	243,895	799,842

FUSION**Capacity of Net Existing On-Campus ASF**

Planning

Yosemite Community College District (590)**Modesto Junior College (592)****Classrooms, Classroom Service (Room Use Code 100s)**

Summary	Total Net ASF	ASF per 100 WSCH	Total Capacity WSCH
Classroom Space	93,552	57.2	163,552

Laboratories & Laboratory Service Area (Room Use Codes 210, 215, 220, 225, 230, 235, 255)

TOP Code	Net ASF	ASF per 100 WSCH	Capacity WSCH
0100 - Agriculture and Natural Resources	355	492.0	72
0101 - Agriculture Technology & Sciences, General	6,661	492.0	1,354
0102 - Animal Science	3,005	492.0	611
0116 - Agricultural Power Equipment Technology	7,200	856.0	841
0401 - Biology, General	6,064	235.0	2,580
0402 - Botany, General	1,189	235.0	506
0403 - Microbiology	1,748	235.0	744
0407 - Zoology, General	1,189	235.0	506
0410 - Anatomy and Physiology	4,756	235.0	2,024
0500 - Business and Management	1,144	128.0	894
0502 - Accounting	1,104	128.0	863
0514 - Office Technology/Office Computer Applications	821	128.0	641
0604 - Radio and Television	106	214.0	50
0701 - Information Technology, General	1,754	171.0	1,026
0706 - Computer Science (transfer)	1,173	171.0	686
0707 - Computer Software Development	9,539	171.0	5,578
0901 - Engineering, General (requires Calculus)(Transfer)	858	321.0	267
0934 - Electronics and Electric Technology	5,850	321.0	1,822
0936 - Printing and Lithography	77	321.0	24
0948 - Automotive Technology	23,951	856.0	2,798
0953 - Drafting Technology	283	321.0	88
0956 - Manufacturing and Industrial Technology	8,225	385.0	2,136
1002 - Art (Painting, Drawing and Sculpture)	8,762	257.0	3,409
1004 - Music	6,022	257.0	2,343
1007 - Dramatic Arts	821	257.0	319
1009 - Applied Design	2,038	257.0	793
1011 - Photography	4,806	257.0	1,870
1201 - Health Occupations, General	981	214.0	458
1208 - Medical Assisting	2,233	214.0	1,043
1210 - Respiratory Care/Therapy	1,000	214.0	467
1230 - Nursing	9,407	214.0	4,396
1300 - Family and Consumer Sciences	2,347	257.0	913
1501 - English	3,819	150.0	2,546
1502 - Language Arts	1,964	150.0	1,309
1506 - Speech Communication	678	150.0	452
1700 - Mathematics	2,104	150.0	1,403
1902 - Physics, General	3,735	257.0	1,453
1905 - Chemistry, General	5,575	257.0	2,169
1911 - Astronomy	2,277	257.0	886
1914 - Geology	1,831	257.0	712
1930 - Earth Science	1,612	257.0	627
2000 - Psychology	1,189	150.0	793
2105 - Administration of Justice	3,175	214.0	1,484
2133 - Fire Technology	1,911	214.0	893
2201 - Social Sciences, General	2,045	150.0	1,363
2202 - Anthropology	1,580	150.0	1,053
4900 - Interdisciplinary Studies	3,931	257.0	1,530
4930 - General Studies	1,150	257.0	447

6820 - Community Service Classes	812	0.0	0
Summary	Total Net ASF	ASF per 100 WSCH	Total Capacity WSCH
Lab Space	164,857	269.2	61,246

Office & Office Service Areas (Room Use Code 300s)			
Summary	Total Net ASF	ASF per FTE	Total Capacity FTE
Office Space	110,743	175.0	633

FUSION

Project Intent & Scope

Planning

Yosemite Community College District (590)
Modesto Junior College (592)

District Priority & Project: 1 Music Building Modernization

Project Type: Reconstruction
Total Estimated Cost: \$12,817,619
Anticipated Source(s) of Funds: State and Non-State
Type of Construction:
Seismic Retrofit:
If Existing - Age:
If Existing - Condition:

Anticipated Time Schedule

	Land Acquisition	Preliminary Plans	Working Drawings	Construction	Equipment	Occupancy
Year	0	2027	2027	2028	2028	2030-31
Estimated Cost	\$0	\$525,477	\$533,462	\$11,447,541	\$311,140	

Explain why this project is needed:

The Music building was constructed in 1956 and has had no building improvements since that date. The acoustics in the music labs are not conducive to student learning and the building does not have adequate technology infrastructure to create smart laboratories. Because of it's physical limitations, instructors cannot use current teaching methodologies in their labs. This project will reconstruct 10,315 asf and will result in 5,700 asf of lab space, 1,115 asf of office space and 3,500 asf of AVTV space. This project will allow staff and students to use 21st century technology in the laboratory areas. The current Facilities Condition Index for this building is 36%.

FUSION

Project Intent & Scope

Planning

Yosemite Community College District (590)
Modesto Junior College (592)

District Priority & Project: 1 Music Building Modernization

Outline of Project Space - Buildings and Remodelings

	Classroom 100s	Laboratory 210-255	Office 300s	Library 400s	AV/TV 530-535	All Other	Total ASF
Project Primary	0	5,700	1,115	0	3,500	0	10,315
Project Secondary	0	-6,022	-1,456	0	-2,556	-437	-10,471
Project Net ASF	0	-322	-341	0	944	-437	-156

Project Net Capacity

Classrooms, Classroom Service (Room Use Code 100s)

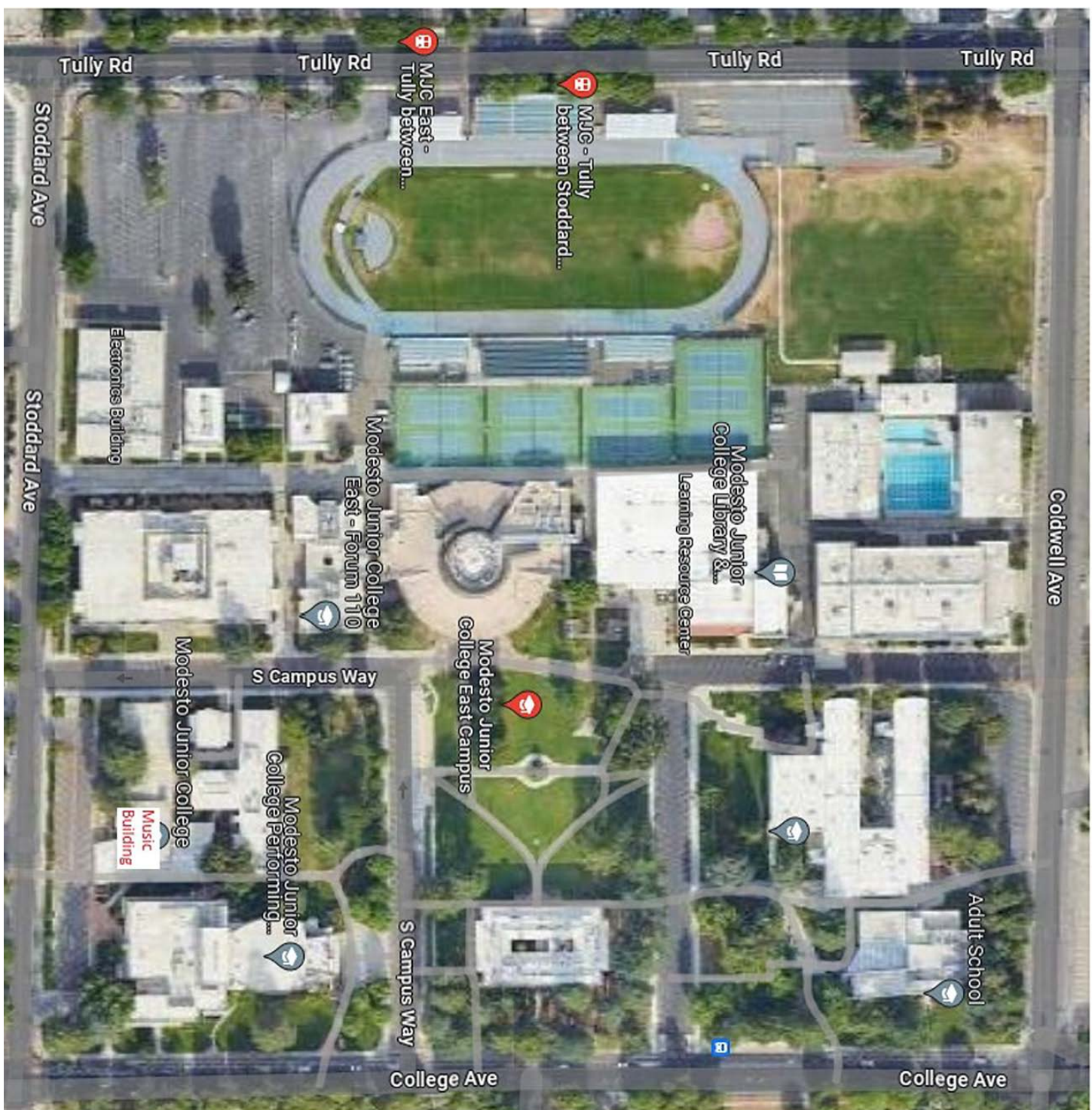
Summary	Net ASF	ASF per 100 WSCH	Capacity WSCH
Classroom Space	0	0.0	0

Laboratories & Laboratory Service Area (Room Use Codes 210, 215, 220, 225, 230, 235, 255)

TOP Code	Primary Effect			Secondary Effect		
	Net ASF	ASF per 100 WSCH	Capacity WSCH	Net ASF	ASF per 100 WSCH	Capacity WSCH
-						
Summary	Net ASF			Capacity WSCH		
Lab Space	-322			-125		

Office & Office Service Areas (Room Use Code 300s)

Summary	Net ASF	ASF per FTE	Capacity FTE
Office Space	-341	175.0	-1.95



FUSION

Campus Capacity/Load Ratios

Planning

Yosemite Community College District (590)
Yosemite District Office* (593)

Campus Lecture Capacity/Load Ratio

No. Project		Lect ASF	WSCH	Occupancy	2025-26	2026-27	2027-28	2028-29	2029-30	2030-31	2031-32
-------------	--	----------	------	-----------	---------	---------	---------	---------	---------	---------	---------

Lecture Summary / Totals		2025-26	2026-27	2027-28	2028-29	2029-30	2030-31	2031-32
Lecture ASF	Actual*/Projected WSCH	0	0	0	0	0	0	0
0	Cumulative Capacity	0	0	0	0	0	0	0
	Capacity/Load Ratio							

FUSION

Campus Capacity/Load Ratios

Planning

Yosemite Community College District (590)
Yosemite District Office* (593)

Campus Lab Capacity/Load Ratio

No.	Project	Lab ASF	WSCH	Occupancy	2025-26	2026-27	2027-28	2028-29	2029-30	2030-31	2031-32
-----	---------	---------	------	-----------	---------	---------	---------	---------	---------	---------	---------

Lab Summary / Totals		2025-26	2026-27	2027-28	2028-29	2029-30	2030-31	2031-32
Lab ASF	Actual*/Projected WSCH	0	0	0	0	0	0	0
0	Cumulative Capacity	0	0	0	0	0	0	0
	Capacity/Load Ratio							

FUSION

Campus Capacity/Load Ratios

Planning

Yosemite Community College District (590)
Yosemite District Office* (593)

Campus Office Capacity/Load Ratio

No. Project										
	Off ASF	FTE	Occupancy	2025-26	2026-27	2027-28	2028-29	2029-30	2030-31	2031-32

Office Summary / Totals			2025-26	2026-27	2027-28	2028-29	2029-30	2030-31	2031-32
Office ASF	Actual*/Projected FTE		0	0	0	0	0	0	0
22,560	Cumulative Capacity		113	113	113	113	113	113	113
	Capacity/Load Ratio								

FUSION

Campus Capacity/Load Ratios

Planning

Yosemite Community College District (590)
Yosemite District Office* (593)

Campus Library Capacity/Load Ratio

No.	Project	Lib ASF	Occupancy	2025-26	2026-27	2027-28	2028-29	2029-30	2030-31	2031-32
-----	---------	---------	-----------	---------	---------	---------	---------	---------	---------	---------

Library Summary / Totals			2025-26	2026-27	2027-28	2028-29	2029-30	2030-31	2031-32
Library ASF	Actual*/Projected ASF		0	0	0	0	0	0	0
0	Cumulative Capacity		0	0	0	0	0	0	0
	Capacity/Load Ratio								

FUSION

Campus Capacity/Load Ratios

Planning

Yosemite Community College District (590)
Yosemite District Office* (593)

Campus AV/TV Capacity/Load Ratio

No.	Project	AV/TV ASF Occupancy	2025-26	2026-27	2027-28	2028-29	2029-30	2030-31	2031-32
-----	---------	---------------------	---------	---------	---------	---------	---------	---------	---------

AV/TV Summary / Totals			2025-26	2026-27	2027-28	2028-29	2029-30	2030-31	2031-32
AV/TV ASF	Actual*/Projected ASF		0	0	0	0	0	0	0
0	Cumulative Capacity		0	0	0	0	0	0	0
	Capacity/Load Ratio								

FUSION

Load Distribution & Staff Forecast

Planning

Yosemite Community College District (590)
Yosemite District Office* (593)

Campus Load Distribution

	Instructional Staff FTE	Total Campus WSCH	Off-Campus WSCH	On-Campus WSCH	P.E. Laboratory WSCH	On-Campus Lecture WSCH	On-Campus Laboratory
Actual Fall							
2022	0	0	0	0	0	0	0
2023	0	0	0	0	0	0	0
Forecast							
2024	0	0	0	0	0	0	0
2025	0	0	0	0	0	0	0
2026	0	0	0	0	0	0	0
2027	0	0	0	0	0	0	0
2028	0	0	0	0	0	0	0
2029	0	0	0	0	0	0	0
2030	0	0	0	0	0	0	0

FUSION

Load Distribution & Staff Forecast

Planning

Yosemite Community College District (590)

Yosemite District Office* (593)

FTE Instruction Staff Worksheet - Fall 2024

College Instructional Staff, Fall Term. Included are all certificated staff for day, extended day, and adult education except those whose office is located off-campus.

Staff Type (a)	Total Certificated Instructional and Statutory Staff FTE (b)	Non-Instructional Portion of FTE (c)	Net Total Instructional and Statutory Staff FTE (b-c)
Instructor	0	0	0
Counselor Include certified special program coordinators, economic opportunity program, coordinators, statutory and Title 5 required staff, et. al.	0	0	0
Department Administrator	0	0	0
Librarian Include certificated director of audio/visual, et. al.	0	0	0
Institutional Administrator Include certificated persons with responsibilities covering the entire institution, such as Superintendent, Assistant Superintendent, President, Dean of Instruction, Director of Data Processing, et. al.	0	0	0
Projected 2024 Totals	0	0	0

Column (b) is the total number of Column (a) distributed to categories

Column (c) is the fraction of time express as Full-Time Equivalents devoted to noninstructional work.

Counselors, department administrators, and statutorily required staff are counted as if they had no noninstructional duties.

FUSION

Load Distribution & Staff Forecast

Planning

Yosemite Community College District (590)

Yosemite District Office* (593)

FTE Instruction Staff Worksheet - Fall 2025

College Instructional Staff, Fall Term. Included are all certificated staff for day, extended day, and adult education except those whose office is located off-campus.

Staff Type (a)	Total Certificated Instructional and Statutory Staff FTE (b)	Non-Instructional Portion of FTE (c)	Net Total Instructional and Statutory Staff FTE (b-c)
Instructor	0	0	0
Counselor Include certified special program coordinators, economic opportunity program, coordinators, statutory and Title 5 required staff, et. al.	0	0	0
Department Administrator	0	0	0
Librarian Include certificated director of audio/visual, et. al.	0	0	0
Institutional Administrator Include certificated persons with responsibilities covering the entire institution, such as Superintendent, Assistant Superintendent, President, Dean of Instruction, Director of Data Processing, et. al.	0	0	0
Projected 2025 Totals	0	0	0

Column (b) is the total number of Column (a) distributed to categories

Column (c) is the fraction of time express as Full-Time Equivalents devoted to noninstructional work.

Counselors, department administrators, and statutorily required staff are counted as if they had no noninstructional duties.

FUSION

Load Distribution & Staff Forecast

Planning

Yosemite Community College District (590)

Yosemite District Office* (593)

FTE Instruction Staff Worksheet - Fall 2026

College Instructional Staff, Fall Term. Included are all certificated staff for day, extended day, and adult education except those whose office is located off-campus.

Staff Type (a)	Total Certificated Instructional and Statutory Staff FTE (b)	Non-Instructional Portion of FTE (c)	Net Total Instructional and Statutory Staff FTE (b-c)
Instructor	0	0	0
Counselor Include certified special program coordinators, economic opportunity program, coordinators, statutory and Title 5 required staff, et. al.	0	0	0
Department Administrator	0	0	0
Librarian Include certificated director of audio/visual, et. al.	0	0	0
Institutional Administrator Include certificated persons with responsibilities covering the entire institution, such as Superintendent, Assistant Superintendent, President, Dean of Instruction, Director of Data Processing, et. al.	0	0	0
Projected 2026 Totals	0	0	0

Column (b) is the total number of Column (a) distributed to categories

Column (c) is the fraction of time express as Full-Time Equivalents devoted to noninstructional work.

Counselors, department administrators, and statutorily required staff are counted as if they had no noninstructional duties.

FUSION

Load Distribution & Staff Forecast

Planning

Yosemite Community College District (590)

Yosemite District Office* (593)

FTE Instruction Staff Worksheet - Fall 2027

College Instructional Staff, Fall Term. Included are all certificated staff for day, extended day, and adult education except those whose office is located off-campus.

Staff Type (a)	Total Certificated Instructional and Statutory Staff FTE (b)	Non-Instructional Portion of FTE (c)	Net Total Instructional and Statutory Staff FTE (b-c)
Instructor	0	0	0
Counselor Include certified special program coordinators, economic opportunity program, coordinators, statutory and Title 5 required staff, et. al.	0	0	0
Department Administrator	0	0	0
Librarian Include certificated director of audio/visual, et. al.	0	0	0
Institutional Administrator Include certificated persons with responsibilities covering the entire institution, such as Superintendent, Assistant Superintendent, President, Dean of Instruction, Director of Data Processing, et. al.	0	0	0
Projected 2027 Totals	0	0	0

Column (b) is the total number of Column (a) distributed to categories

Column (c) is the fraction of time express as Full-Time Equivalents devoted to noninstructional work.

Counselors, department administrators, and statutorily required staff are counted as if they had no noninstructional duties.

FUSION

Load Distribution & Staff Forecast

Planning

Yosemite Community College District (590)

Yosemite District Office* (593)

FTE Instruction Staff Worksheet - Fall 2028

College Instructional Staff, Fall Term. Included are all certificated staff for day, extended day, and adult education except those whose office is located off-campus.

Staff Type (a)	Total Certificated Instructional and Statutory Staff FTE (b)	Non-Instructional Portion of FTE (c)	Net Total Instructional and Statutory Staff FTE (b-c)
Instructor	0	0	0
Counselor Include certified special program coordinators, economic opportunity program, coordinators, statutory and Title 5 required staff, et. al.	0	0	0
Department Administrator	0	0	0
Librarian Include certificated director of audio/visual, et. al.	0	0	0
Institutional Administrator Include certificated persons with responsibilities covering the entire institution, such as Superintendent, Assistant Superintendent, President, Dean of Instruction, Director of Data Processing, et. al.	0	0	0
Projected 2028 Totals	0	0	0

Column (b) is the total number of Column (a) distributed to categories

Column (c) is the fraction of time express as Full-Time Equivalents devoted to noninstructional work.

Counselors, department administrators, and statutorily required staff are counted as if they had no noninstructional duties.

FUSION

Load Distribution & Staff Forecast

Planning

Yosemite Community College District (590)

Yosemite District Office* (593)

FTE Instruction Staff Worksheet - Fall 2029

College Instructional Staff, Fall Term. Included are all certificated staff for day, extended day, and adult education except those whose office is located off-campus.

Staff Type (a)	Total Certificated Instructional and Statutory Staff FTE (b)	Non-Instructional Portion of FTE (c)	Net Total Instructional and Statutory Staff FTE (b-c)
Instructor	0	0	0
Counselor Include certified special program coordinators, economic opportunity program, coordinators, statutory and Title 5 required staff, et. al.	0	0	0
Department Administrator	0	0	0
Librarian Include certificated director of audio/visual, et. al.	0	0	0
Institutional Administrator Include certificated persons with responsibilities covering the entire institution, such as Superintendent, Assistant Superintendent, President, Dean of Instruction, Director of Data Processing, et. al.	0	0	0
Projected 2029 Totals	0	0	0

Column (b) is the total number of Column (a) distributed to categories

Column (c) is the fraction of time express as Full-Time Equivalents devoted to noninstructional work.

Counselors, department administrators, and statutorily required staff are counted as if they had no noninstructional duties.

FUSION

Load Distribution & Staff Forecast

Planning

Yosemite Community College District (590)

Yosemite District Office* (593)

FTE Instruction Staff Worksheet - Fall 2030

College Instructional Staff, Fall Term. Included are all certificated staff for day, extended day, and adult education except those whose office is located off-campus.

Staff Type (a)	Total Certificated Instructional and Statutory Staff FTE (b)	Non-Instructional Portion of FTE (c)	Net Total Instructional and Statutory Staff FTE (b-c)
Instructor	0	0	0
Counselor Include certified special program coordinators, economic opportunity program, coordinators, statutory and Title 5 required staff, et. al.	0	0	0
Department Administrator	0	0	0
Librarian Include certificated director of audio/visual, et. al.	0	0	0
Institutional Administrator Include certificated persons with responsibilities covering the entire institution, such as Superintendent, Assistant Superintendent, President, Dean of Instruction, Director of Data Processing, et. al.	0	0	0
Projected 2030 Totals	0	0	0

Column (b) is the total number of Column (a) distributed to categories

Column (c) is the fraction of time express as Full-Time Equivalents devoted to noninstructional work.

Counselors, department administrators, and statutorily required staff are counted as if they had no noninstructional duties.

FUSION

Cumulative Sum of Existing & Proposed Space (2025-2031)

Planning

Yosemite Community College District (590)

Yosemite District Office* (593)

Priority & Year of Occupancy (a)	Classroom 100's (b)	Laboratory 200's (c)	Office 300's (d)	Library 400's (e)	AV Radio TV 530-535 (f)	P.E. 520-525 (g)	Assembly 610 & 615 (h)	Inactive 050-070 (i)	All Other Areas (j)	Total ASF (k)
Total ASF	0	0	22,560	0	0	0	0	0	72,008	94,568

Total Existing and Proposed Space										
	0	0	22,560	0	0	0	0	0	72,008	94,568

FUSION**Capacity of Net Existing On-Campus ASF**

Planning

Yosemite Community College District (590)**Yosemite District Office* (593)****Classrooms, Classroom Service (Room Use Code 100s)**

Summary	Total Net ASF	ASF per 100 WSCH	Total Capacity WSCH
Classroom Space	0	0.0	0

Laboratories & Laboratory Service Area (Room Use Codes 210, 215, 220, 225, 230, 235, 255)

TOP Code	Net ASF	ASF per 100 WSCH	Capacity WSCH
-			
Summary	Total Net ASF	ASF per 100 WSCH	Total Capacity WSCH
Lab Space	0	0.0	0

Office & Office Service Areas (Room Use Code 300s)

Summary	Total Net ASF	ASF per FTE	Total Capacity FTE
Office Space	22,560	200.0	113

FUSION

Project Intent & Scope

Planning

Yosemite Community College District (590)
Yosemite District Office* (593)

District Priority & Project: 0 THIS CAMPUS HAS NO PROJECTS

Project Type:
Total Estimated Cost: \$0
Anticipated Source(s) of Funds:
Type of Construction:
Seismic Retrofit:
If Existing - Age:
If Existing - Condition:

Anticipated Time Schedule

	Land Acquisition	Preliminary Plans	Working Drawings	Construction	Equipment	Occupancy
Year	0	0	0	0	0	
Estimated Cost	\$0	\$0	\$0	\$0	\$0	

Explain why this project is needed:

FUSION

Project Intent & Scope

Planning

Yosemite Community College District (590)
Yosemite District Office* (593)

District Priority & Project: 0 THIS CAMPUS HAS NO PROJECTS

Outline of Project Space - Buildings and Remodelings

	Classroom 100s	Laboratory 210-255	Office 300s	Library 400s	AV/TV 530-535	All Other	Total ASF
Project Primary	0	0	0	0	0	0	0
Project Secondary	0	0	0	0	0	0	0
Project Net ASF	0	0	0	0	0	0	0

Project Net Capacity

Classrooms, Classroom Service (Room Use Code 100s)

Summary	Net ASF	ASF per 100 WSCH	Capacity WSCH
Classroom Space	0	0.0	0

Laboratories & Laboratory Service Area (Room Use Codes 210, 215, 220, 225, 230, 235, 255)

TOP Code	Primary Effect			Secondary Effect		
	Net ASF	ASF per 100 WSCH	Capacity WSCH	Net ASF	ASF per 100 WSCH	Capacity WSCH
-						
Summary	Net ASF			Capacity WSCH		
Lab Space	0			0		

Office & Office Service Areas (Room Use Code 300s)

Summary	Net ASF	ASF per FTE	Capacity FTE
Office Space	0	0.0	0.00