

August 1, 2007

## Measure E Bond Program

### Phase I Projects

#### PROGRAM PROGRESS

**MJC's Campus Master Plan** will be available for review on the Measure E website this month. The plan will be presented to the board in September. Project budgets are being adjusted due to changes in Campus Master Plan.

Campus-wide CEQA (CA Environmental Quality Act) research in conjunction with additional required assessments, are in process.

**Allied Health:** Building location has been determined. Design Development documents are being developed. Project committee will meet for plan revisions by end of August.

**Agricultural Complex** (including the Living Units, Pavilion and Animal Units): Demolition is 100% complete for the Living Units. Housing manufacturing has bid and Notice to Proceed process is in progress. Agriculture Project Committee continues to meet with the design team for the Pavilion and Animal Units schematic design.

**Student Services** project is pending contract negotiations with selected firm.

**Scheduled Maintenance:** Practice Field Lighting project filed a notice of completion in June. Student Center HVAC Replacement is in bid phase.

**West Side Center:** The project committee will begin to meet in the beginning of the fall.

#### CONSTRUCTION PROGRESS

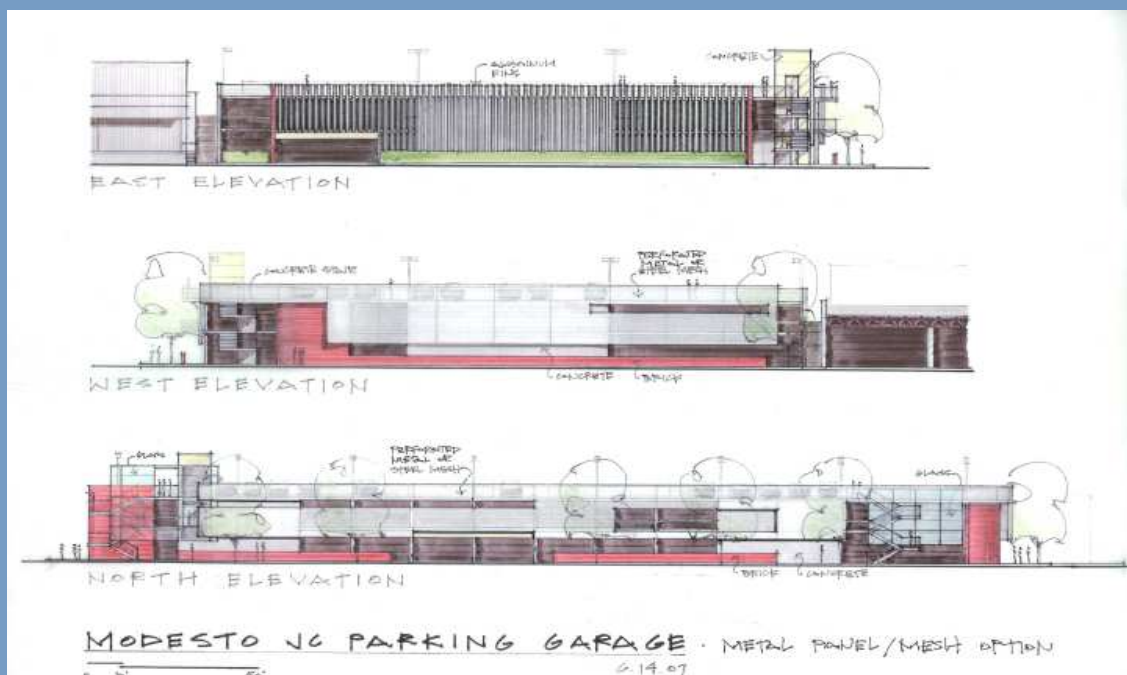
**Auditorium Project:** Construction continues throughout the building exterior and interior.

*Activities that may impact campus operations:*

- a. Access: East sidewalk closed at Music/Arts Buildings.
- b. Noise: Construction equipment on south site.
- c. Parking: South Street parking is now available to staff.
- d. Power outages: None anticipated.
- e. Water off: None anticipated.
- f. Odors: No unusual odors are expected.
- g. Dust: No unusual dust is expected.

See weekly Auditorium Construction Bulletins for additional details on the YCCD Measure E webpage.

**The Parking Structure schematic design was completed at the end of July. Cost Estimating and Design Development begin in early August.**



If you have any questions or concerns about ongoing construction activities or would like to get additional information about ongoing design projects, please contact Kitchell, CEM at 575-6991.