

**Measure E Bond Program
Phase I Projects**

PROGRAM PROGRESS

Revised Columbia College Facilities Master Plan is being adopted by the Board of Trustees based on requests of the college.

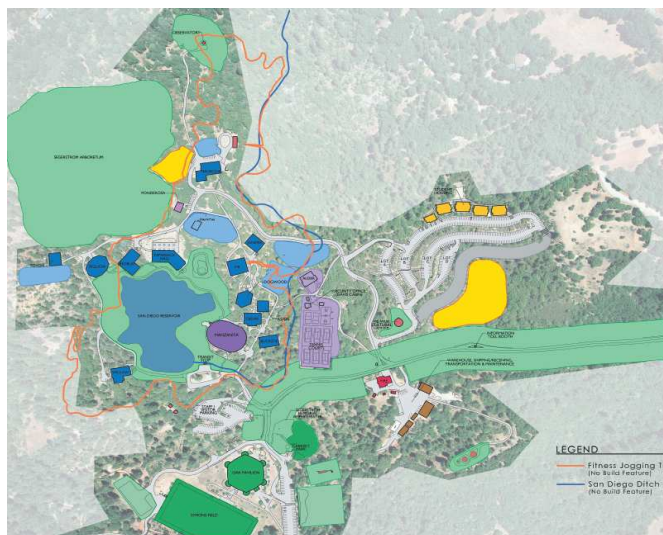
Campus Master Planning draft is in the process of being reviewed. The campus master plan draft includes:

Campus Master Plan

- Goals and objectives of the master plan
- Campus Master Plan
- Campus Existing Conditions
- Planning Process
- Image and Identity
- Open Space
- Circulation

Design Guidelines

- Sustainability
- Site and Landscape Design Guidelines
- Architectural Design Guidelines
- Signage, Gateways, and Way - Finding
- Circulation Design Guidelines



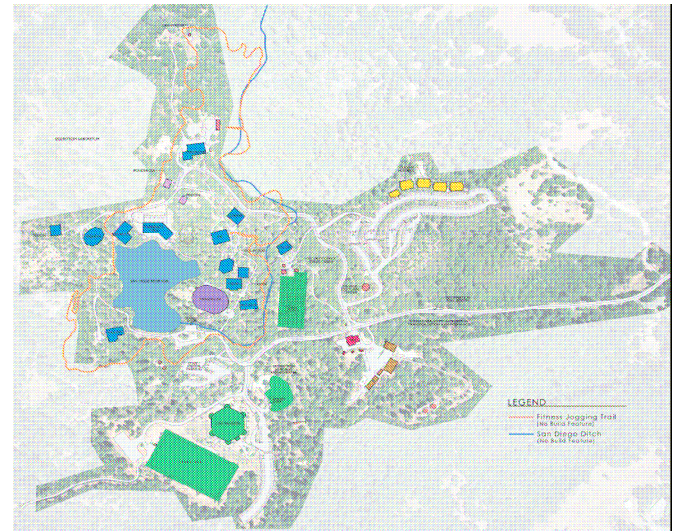
Columbia College Campus Master Plan Draft

Geothermal Investigative for the Science & Natural Resource Building has started and is expected to be complete by the end of February.

Geotechnical surveying for Science & Natural Resource, Child Development Center, Madrone Building, and Public Safety Center is complete.

If you have any questions or concerns about ongoing construction activities or would like to get additional information about ongoing design projects, please contact Kitchell, CEM at 575-6991.

A District-wide CEQA (CA Environmental Quality Act) preliminary study is expected to be completed by the end of February. This is the first step in reviewing the impacts of construction and new buildings on the campus. Careful consideration must be made to avoid long-term damage to the site by future uses.



Columbia College Existing Conditions

DESIGN PROGRESS

Student Parking Lot: Division of State Architect (DSA) has provided design review comments for incorporation into the design.

Public Safety Center: Architects are in the programming phase of the design process. The project goal is to house campus security in the same building as the campus fire department and CDF.

Child Development Center: Project design and engineering process continues with the project committee. The location has been determined to be the existing Pinyon Building site.

Madrone Building: Architects are in the design development phase and continuing forward.

Science & Natural Resources: Geotechnical engineering is underway for a geothermal source of heat and cooling for the building. Design meetings continue as scheduled with the project committee.

CONSTRUCTION PROGRESS

Disabled Lot/Bus Service Loop Area:

The disabled parking area/bus loop closeout is in progress.