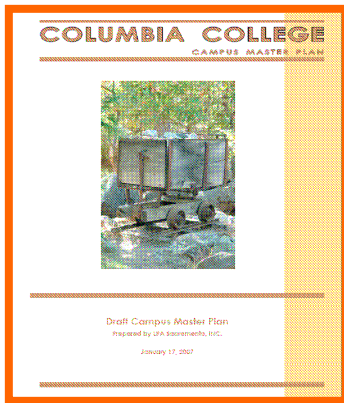


**Measure E Bond Program
Phase I Projects**

PROGRAM PROGRESS

Campus Master Plan document for Columbia College was Board approved in March.



Columbia College Campus Master Plan

The District-wide CEQA (CA Environmental Quality Act) Initial Study (IS) is being developed and is expected to be complete by the end of April.

DESIGN PROGRESS

Student Parking Lot: Construction documents are in the backcheck process with Division of State Architect (DSA).

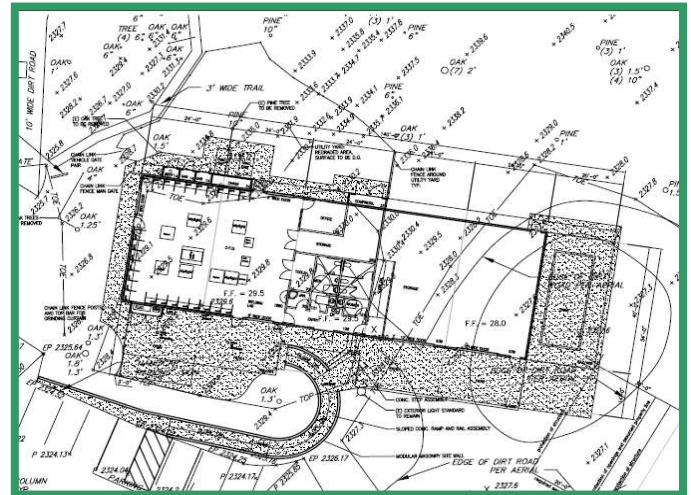
Public Safety Center: Architects are in the programming/schematic design phase. Hazardous material abatement work will be completed early April.

Child Development Center: Project design and engineering is in the schematic design phase. Cost estimating of the project is in process of being finalized prior to continuing on to the design development phase.



Child Development Design Meeting

Madrone Building: Schematic/design development drawings are in the process of being reviewed. Cost estimate is being finalized prior to moving into the construction document phase.

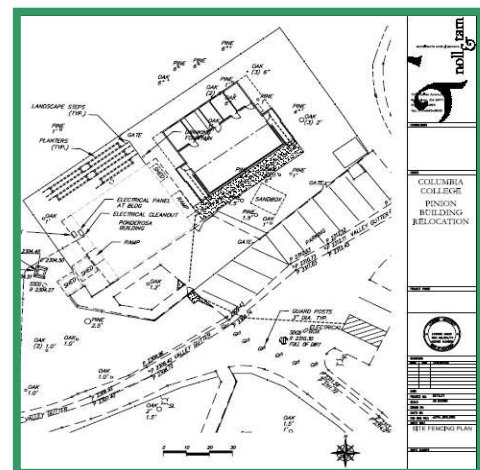


Design Development Drawing for Madrone

Science & Natural Resources: Geothermal Investigative results for the Science & Natural Resource Building are in process of being analyzed by the design team and are expected to be complete by the end of April. The next design meeting with the project committee is scheduled for April 20, 2007.

Other Projects:

Pinyon Relocation: This is a secondary effect project from the Child Development Center Project and is proceeding as a fast track project. Construction documents were reviewed and approved by DSA. Construction is anticipated to begin mid-May.



Construction Document Drawing for Pinyon

If you have any questions or concerns about ongoing construction activities or would like to get additional information about ongoing design projects, please contact Kitchell, CEM at 575-6991.