



Measure E Bond Program

MJC Auditorium Alterations/Addition

CONSTRUCTION UPDATE

Issue No. 7

DECEMBER 22, 2006

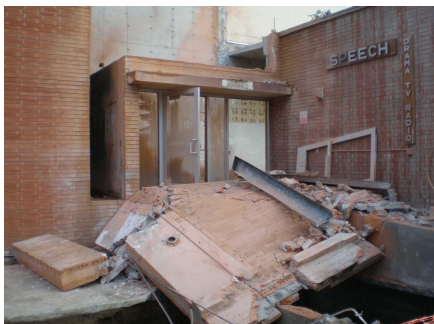
1. Work performed during week of 12/18/06:

- a. Poured north side shallow footings.
- b. Started drilling holes for north side steel channels.
- c. Started wall forms at south west corner for new addition.
- d. Started wall forms in orchestra pit.
- e. Poured footing extension next to little theater.
- f. Continued west side demolition at new elevator location.
- g. Saw cut east side concrete stairs for demolition.
- h. Built scaffolding at stage area to install wall dowels.
- i. Energized existing site lights prior to having new lights.



2. Work anticipated for week of 12/25/06:

- a. Complete wall forms at south west corner for new addition.
- b. Complete wall forms at orchestra pit.
- c. Layout footings along "C" and "D" lines for new addition.
- d. Continue demolition at elevator area and east side stairs.
- e. Start demolition at existing south side roll-up door.
- f. Continue installation of wall dowels at stage area.



3. Activities that may impact campus operations:

- a. Access: No access problems anticipated
- b. Noise: Construction equipment performing site work.
- c. Parking: Parking Lot F closed during construction.
- d. Power out: None anticipated.
- e. Water off: None anticipated.
- f. Odors: No unusual odors are expected.
- g. Dust: No unusual dust is expected.

If there are any questions or concerns contact Kitchell, Measure E Bond Program Manager, at 575-6991 or email motaya@kitchell.com

