



Measure E Bond Program MODESTO JUNIOR COLLEGE CAMPUS CONSTRUCTION UPDATE

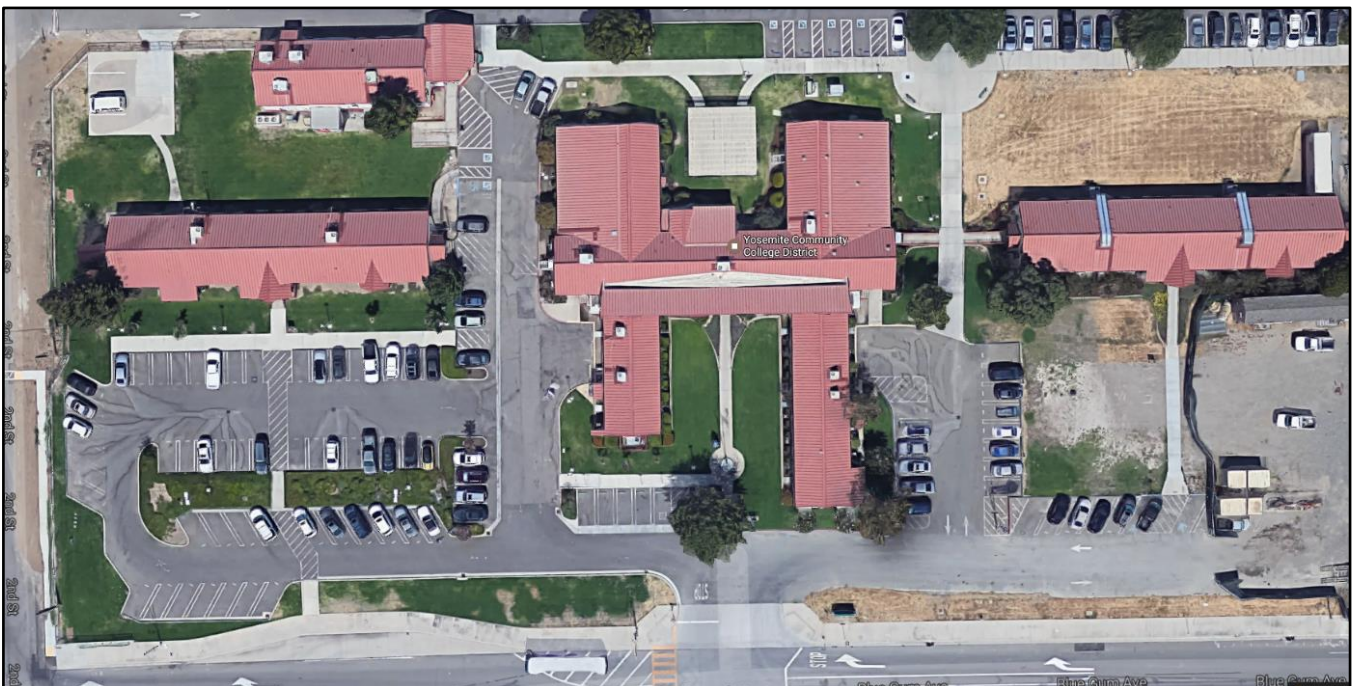


UPDATES & ACTIVITIES THAT MAY IMPACT CAMPUS OPERATION *Week of May 15, 2017*

OLD DISTRICT OFFICE BUILDINGS

Work this week: Hazmat abatement will begin this week.

Access: None.
Noise: Minimal.
Parking: Staff parking lots will remain open.
Utilities: None.
Odors: None.
Dust: Minimal.





WEST CAMPUS ROADS PHASE IIA (AREAS 5 & 6)

Work this week: Added scope for child care parking loading and unloading zone is complete.
Landscape maintenance period is in process.

Access: The west loop road is now open.
Noise: Minimal.
Parking: All parking lots are open.
Utilities: Watering for vegetation establishment.
Odors: None.



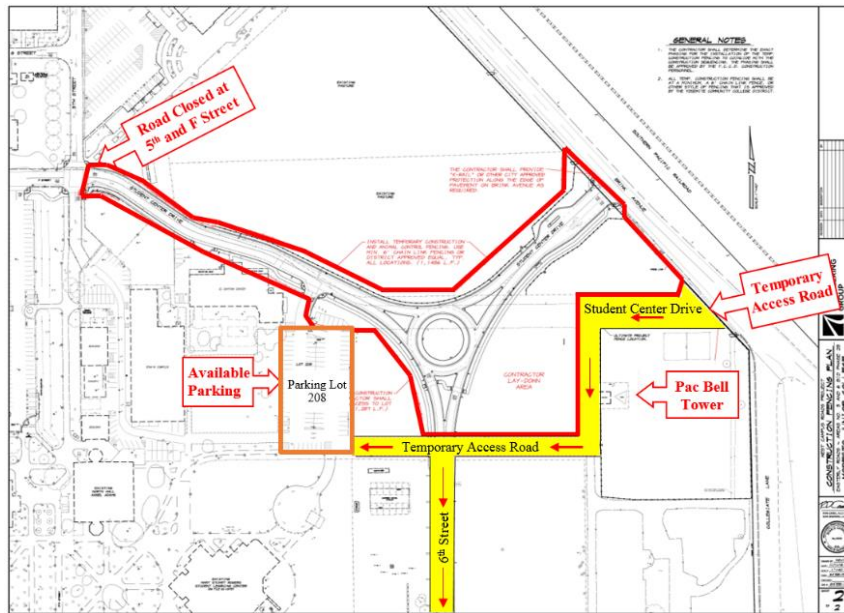


Measure E Bond Program MODESTO JUNIOR COLLEGE CAMPUS CONSTRUCTION UPDATE Page 3 of 3

WEST CAMPUS ROADS PHASE IIB (AREAS 5&6)

Work this week: Temporary access road is complete and open for use. Construction of the new turn around and connection between Student Center Drive and Brink is underway.

Access: None.
Noise: None.
Parking: Gravel lot will remain closed until August. Parking lot # 208 will remain open.
Utilities: None.
Odors: None.



If there are any questions or concerns regarding Measure E Bond projects please contact Kitchell CEM, located at 2201 Blue Gum Ave., Modesto CA 95358 Tel: (209) 575-6991 E-mail: avalencia@kitchell.com