



Measure E Bond Program MODESTO JUNIOR COLLEGE CAMPUS CONSTRUCTION UPDATE

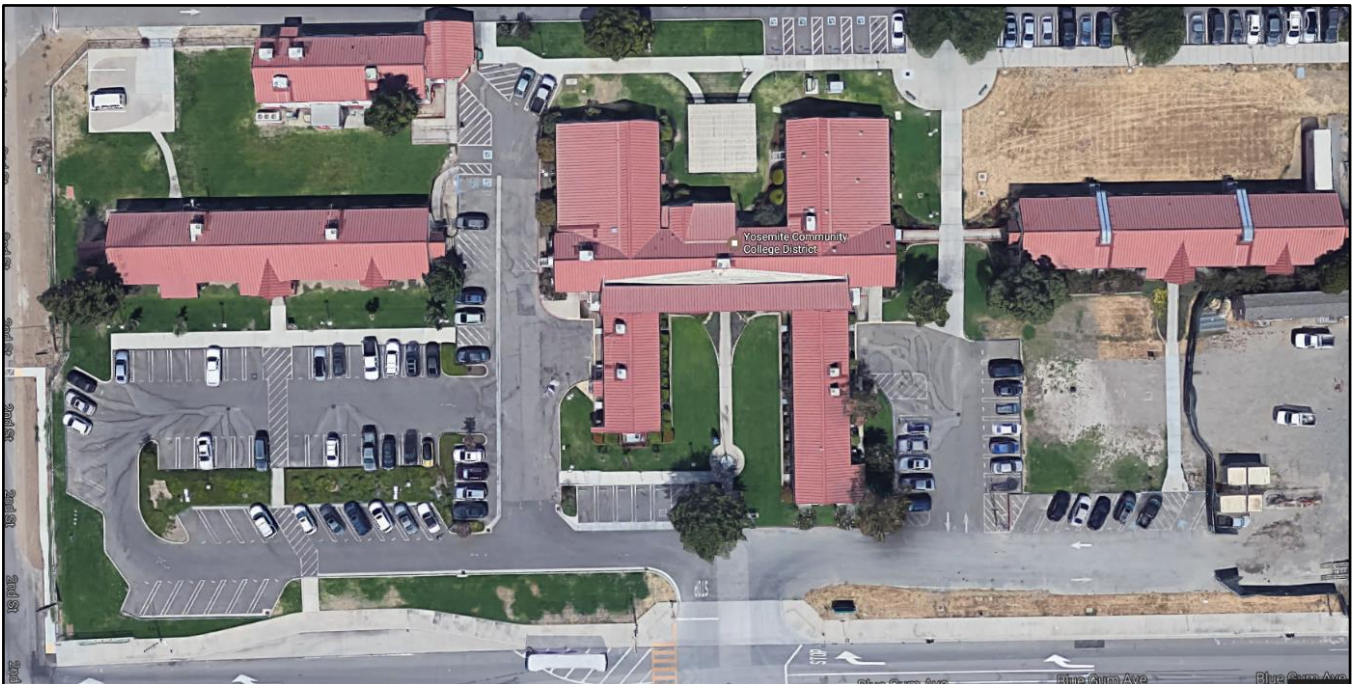


UPDATES & ACTIVITIES THAT MAY IMPACT CAMPUS OPERATION *Week of May 8, 2017*

DISTRICT OFFICE BUILDING

Work this week: All central services staff have moved out of the old buildings. Kitchell is working with the District on liquidating furniture from the old central services buildings in preparation for the Hazmat abatement and demolition.

Access: None.
Noise: None.
Parking: None.
Utilities: None.
Odors: None.
Dust: None.





Measure E Bond Program MODESTO JUNIOR COLLEGE CAMPUS CONSTRUCTION UPDATE Page 2 of 3

WEST CAMPUS ROADS PHASE IIA (AREAS 5 & 6)

Work this week: All work is complete. Landscape maintenance period is in process.

Access: The west loop road is now open.
Noise: Minimal.
Parking: All parking lots are open.
Utilities: Watering for vegetation establishment.
Odors: None.
Dust: None.



WEST CAMPUS ROADS PHASE IIB (AREAS 5&6)

Work this week: Temporary access road is complete and open for use. Construction of the new turn around and connection between Student Center Drive and Brink is underway.

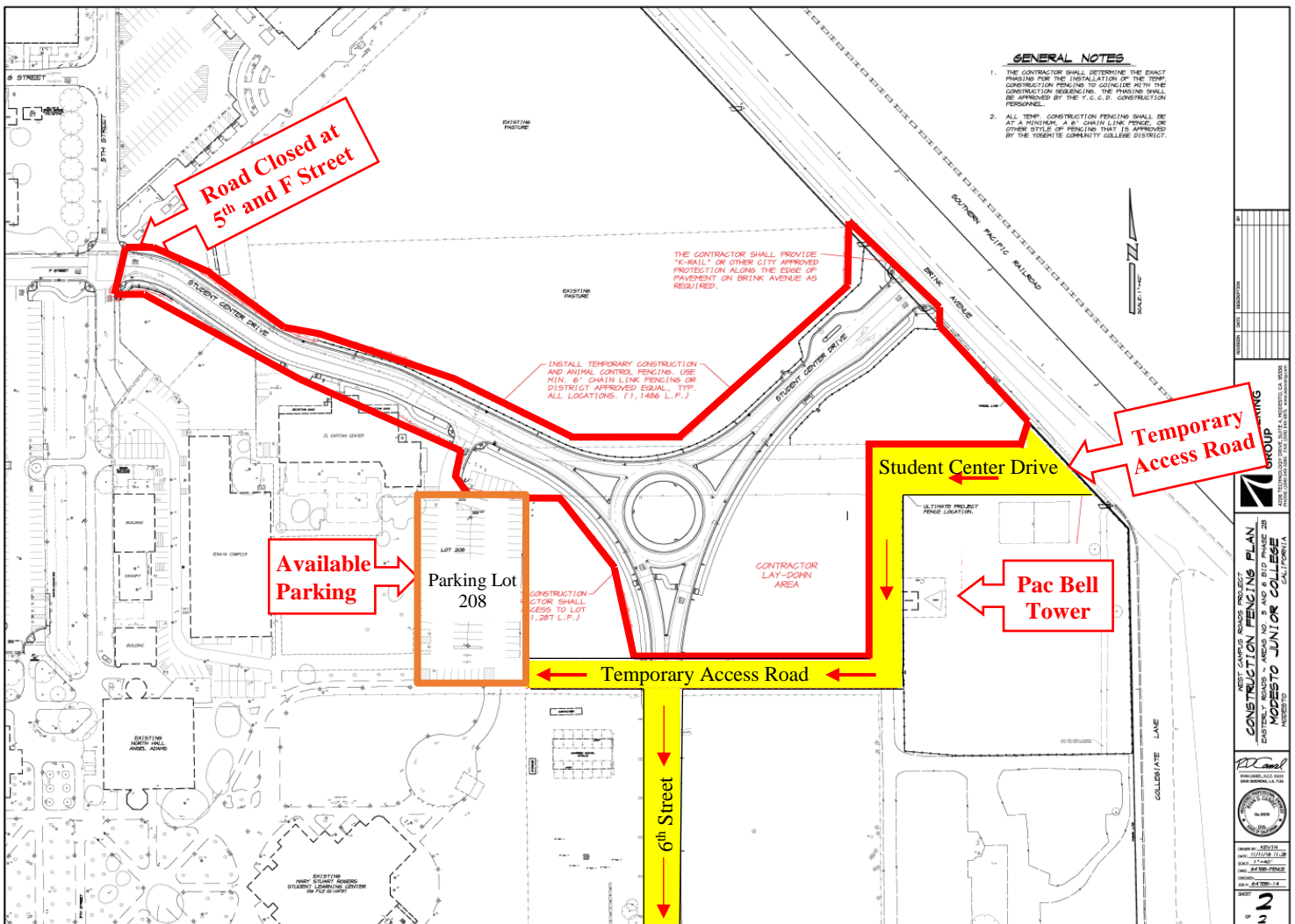
Access: None.

Noise: None.

Parking: Gravel lot will remain closed until August. Parking lot # 208 will remain open.

Utilities: None.

Odors: None.



If there are any questions or concerns regarding Measure E Bond projects please contact Kitchell CEM, located at 2201 Blue Gum Ave., Modesto CA 95358 Tel: (209) 575-6991 E-mail: avalencia@kitchell.com