



Measure E Bond Program MODESTO JUNIOR COLLEGE CAMPUS CONSTRUCTION UPDATE

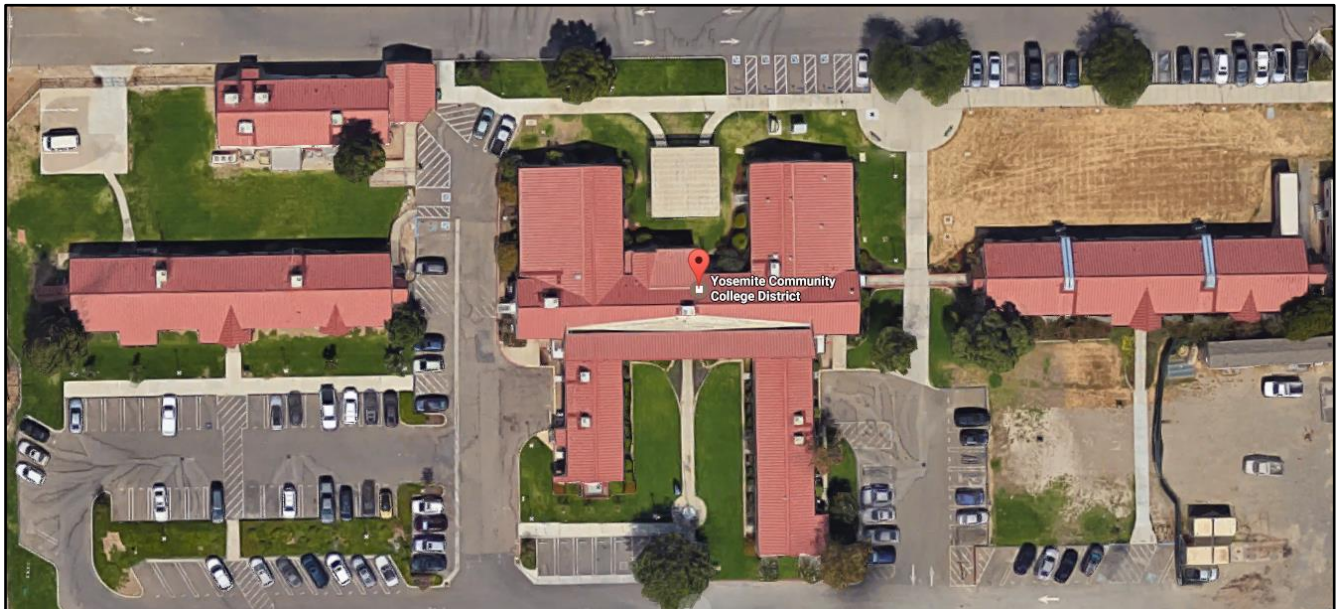


UPDATES & ACTIVITIES THAT MAY IMPACT CAMPUS OPERATION *Week of March 20, 2017*

DISTRICT OFFICE BUILDING

Work this week: All central services staff have moved in to the new building. Kitchell is working with the District on liquidating furniture from the old central services buildings in preparation for the demolition of the old buildings.

Access: None.
Noise: None.
Parking: None.
Utilities: None.
Odors: None.
Dust: None.





Measure E Bond Program MODESTO JUNIOR COLLEGE CAMPUS CONSTRUCTION UPDATE Page 2 of 3

WEST CAMPUS ROADS PHASE IIA (AREAS 5 & 6)

Work this week: Landscape work continues along with miscellaneous work and clean up.

Access: The west loop road is now open.
Noise: Minimal.
Parking: All parking lots are open.
Utilities: None.
Odors: None.
Dust: None.





WEST CAMPUS ROADS PHASE IIB (AREAS 5&6)

Work this week: Road work will resume back in May.

Access: None.

Noise: Minimal.

Parking: A portion of the gravel lot will be blocked off, but the lot will remain open.

Utilities: None.

Odors: None.

Dust: Minimal.



If there are any questions or concerns please contact Kitchell CEM, located at
2201 Blue Gum Ave., Modesto CA 95358 Tel: 575-6991 E-mail: avalencia@kitchell.com