



# Measure E Bond Program MODESTO JUNIOR COLLEGE CAMPUS CONSTRUCTION UPDATE



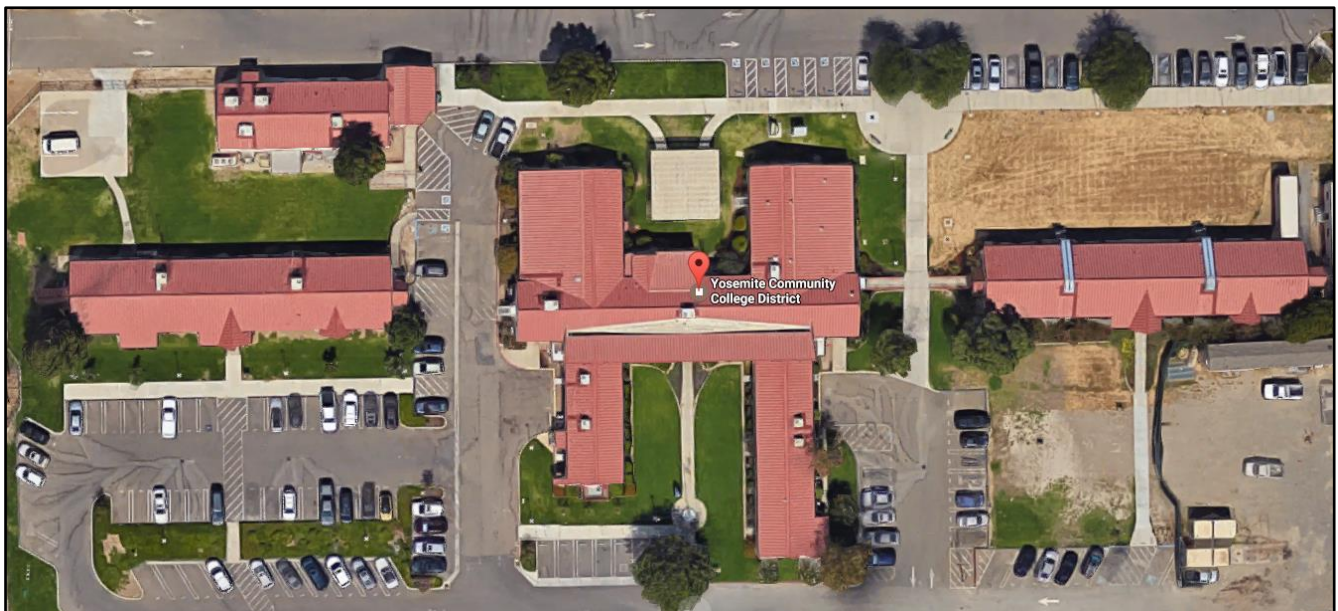
## UPDATES & ACTIVITIES THAT MAY IMPACT CAMPUS OPERATION

*Week of January 23, 2017*

### DISTRICT OFFICE BUILDING

**Work this week:** All central services staff has moved in to the new building. Kitchell is working with the District on liquidating furniture from the old central services building in preparation for the demolition of the old buildings.

**Access:** None.  
**Noise:** None.  
**Parking:** None.  
**Utilities:** None.  
**Odors:** None.  
**Dust:** None.



## WEST CAMPUS ROADS PHASE I (AREAS 3 & 4)

**Work this week:** Contractor will be working on landscape, irrigation, and punch list items.

**Access:** Please see map below for campus navigation.

**Noise:** None.

**Parking:** All parking lots are open.

**Utilities:** None.

**Odors:** None.

**Dust:** None.







## WEST CAMPUS ROADS PHASE IIA (AREA 5 & 6)

**Work this week:** Landscape work continues along with miscellaneous work.

**Access:** The west loop road is now open.  
**Noise:** None.  
**Parking:** All parking lots are open.  
**Utilities:** None.  
**Odors:** None.  
**Dust:** None.

Roads Open for Beginning of Spring Term

Entry open

Entry Open

Open Parking Area/  
Alternate Route

Staff Parking Only

Entry Open

Entry Open

Entry Open



If there are any questions or concerns please contact Kitchell CEM, located at  
2201 Blue Gum Ave., Modesto CA 95358 Tel: 575-6991 E-mail: [avalencia@kitchell.com](mailto:avalencia@kitchell.com)