



Measure E Bond Program MODESTO JUNIOR COLLEGE CAMPUS CONSTRUCTION UPDATE



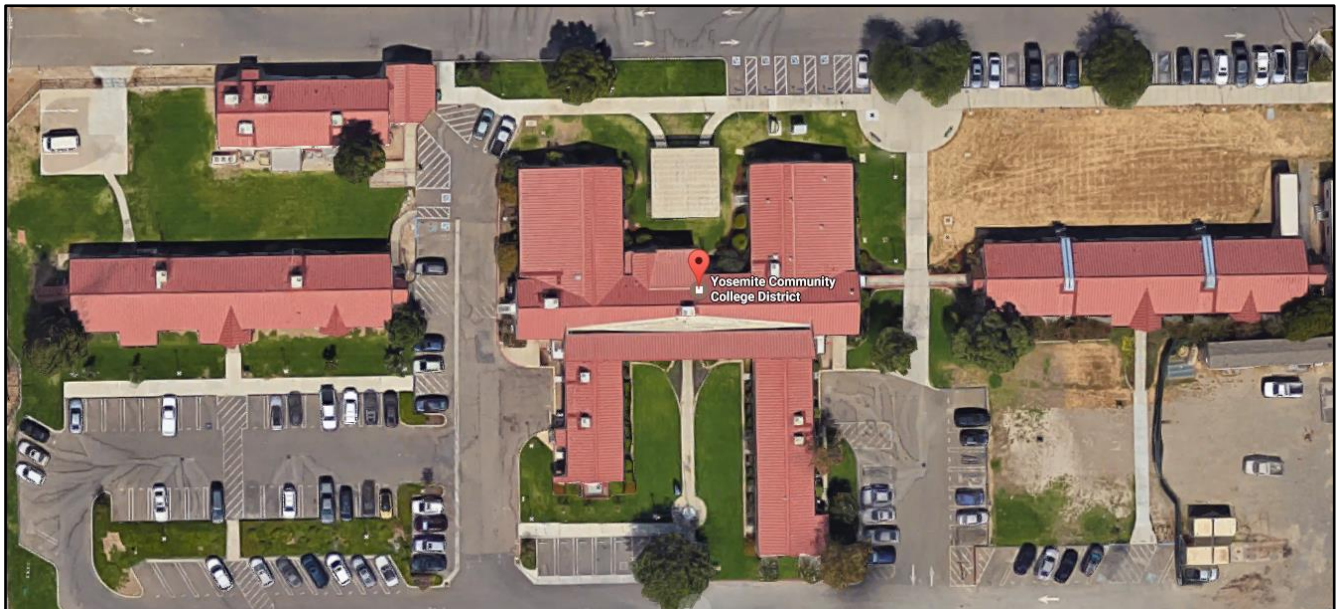
UPDATES & ACTIVITIES THAT MAY IMPACT CAMPUS OPERATION

Week of January 16, 2017

DISTRICT OFFICE BUILDING

Work this week: All central services staff has moved in to the new building. Working on liquidation of furniture from old central services building in preparation for the demolition of the old buildings.

Access: None.
Noise: None.
Parking: Lot 215 will be closed on Monday, January 16 and will reopen on January 17.
Utilities: None.
Odors: None.
Dust: None.



WEST CAMPUS ROADS PHASE I (AREAS 3 & 4)

Work this week: Contractor will be working on landscape, irrigation, and punch list items.

Access: Please see map below for campus navigation.

Noise: None.

Parking: All parking lots are open.

Utilities: None.

Odors: None.

Dust: None.



WEST CAMPUS ROADS PHASE IIA (AREA 5 & 6)

Work this week: Landscape work continues along with miscellaneous work.

Access: The west loop road is now open.

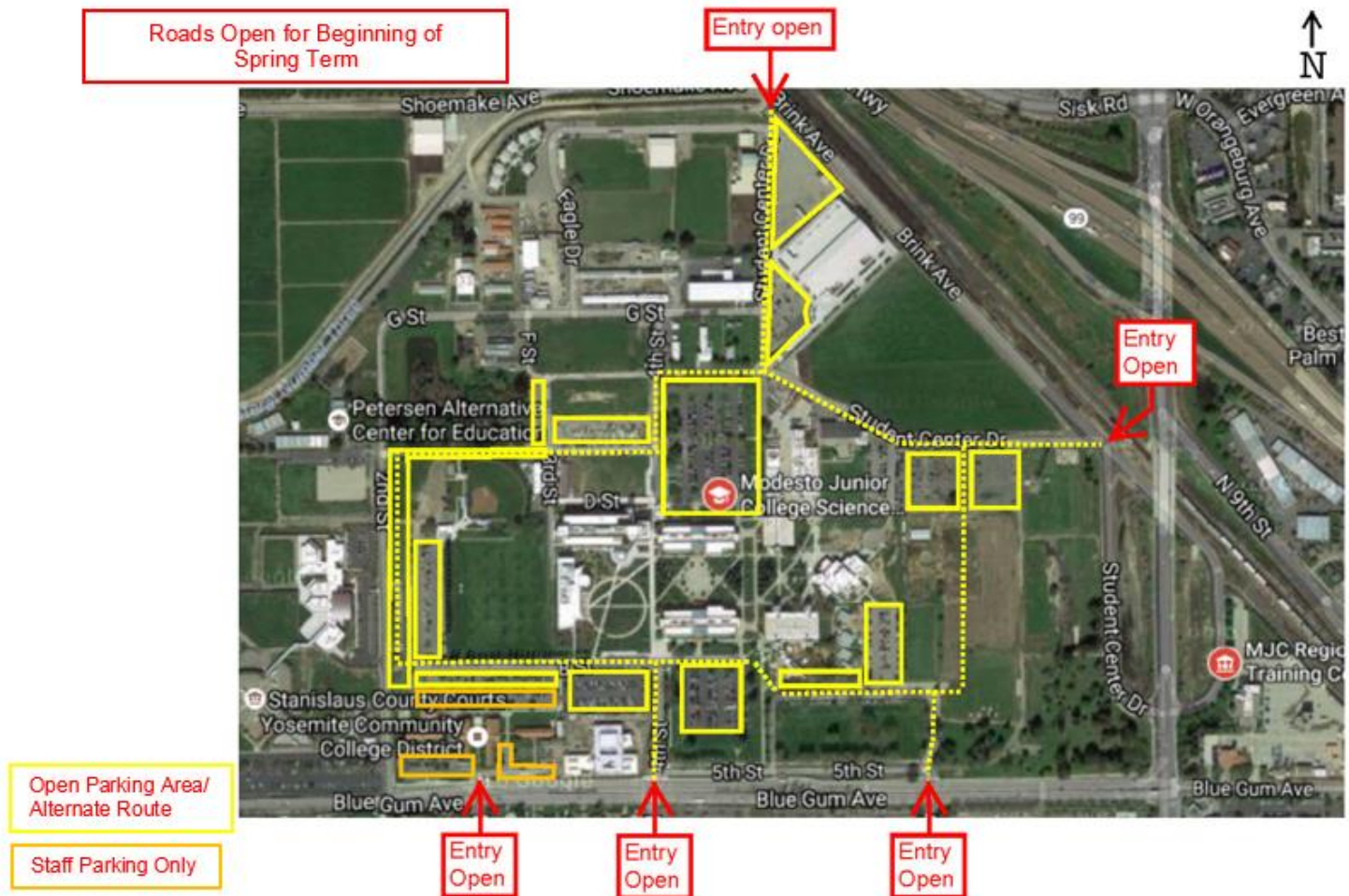
Noise: None.

Parking: All parking lots are open.

Utilities: None.

Odors: None.

Dust: None.



If there are any questions or concerns please contact Kitchell CEM, located at 2201 Blue Gum Ave., Modesto CA 95358 Tel: 575-6991 E-mail: avalencia@kitchell.com