



# Measure E Bond Program MODESTO JUNIOR COLLEGE CAMPUS CONSTRUCTION UPDATE

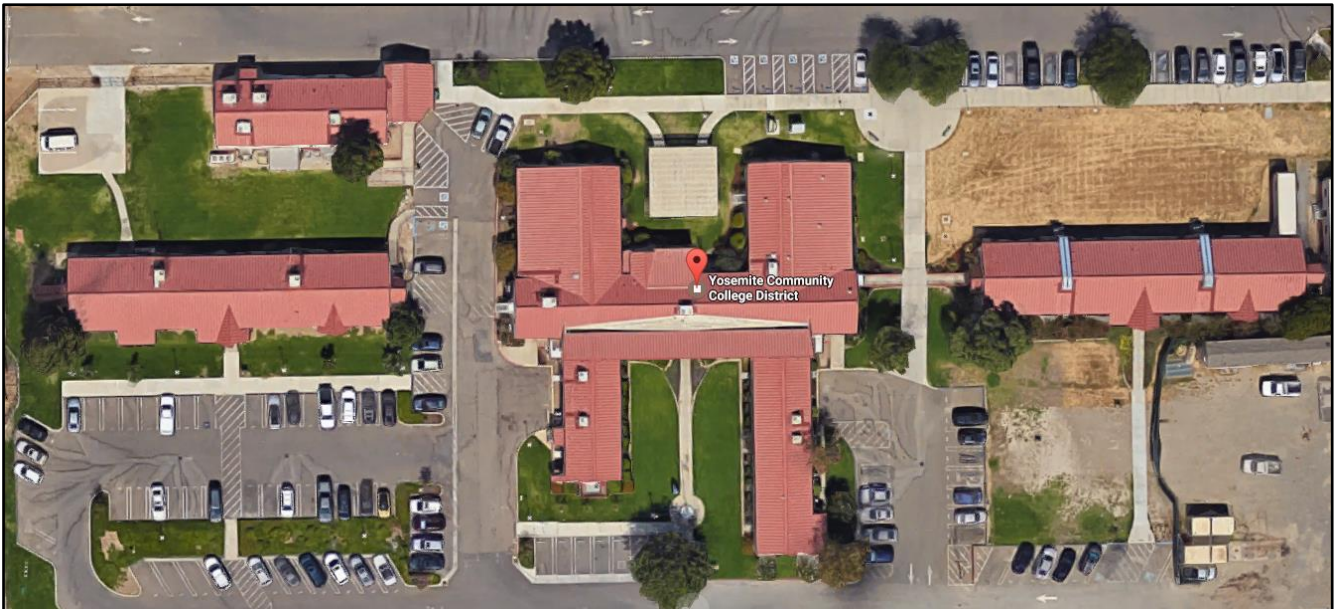


## UPDATES & ACTIVITIES THAT MAY IMPACT CAMPUS OPERATION *Week of January 2, 2017*

### DISTRICT OFFICE BUILDING

**Work this week:** All central services staff has moved in to the new building. Working on liquidation of furniture from old central services building in preparation for the demolition of the old buildings.

**Access:** None.  
**Noise:** None.  
**Parking:** None.  
**Utilities:** None.  
**Odors:** None.  
**Dust:** None.



**Access:** Please see map below for campus navigation.  
**Noise:** Low noise due to minor construction work.  
**Parking:** All parking lots are open with the exception of Lot 209 & 211.  
**Utilities:** None anticipated.  
**Odors:** None anticipated.  
**Dust:** Moderate impact due to construction related activities.







## WEST CAMPUS ROADS PHASE IIA (AREA 5 & 6)

**Work this week:** Landscape work continues along with miscellaneous work.

**Access:** The west loop road is now open.  
**Noise:** Low noise due to minor construction work.  
**Parking:** All parking lots are open with the exception of Lot 209 & 211.  
**Utilities:** None anticipated.  
**Odors:** None anticipated.  
**Dust:** Moderate impact due to construction related activities.

Roads Open for Beginning of  
Spring Term

Entry open

Entry  
Open

Open Parking Area/  
Alternate Route

Staff Parking Only

Entry  
Open

Entry  
Open

Entry  
Open



If there are any questions or concerns please contact Kitchell CEM, located at  
2201 Blue Gum Ave., Modesto CA 95358 Tel: 575-6991 E-mail: [avalencia@kitchell.com](mailto:avalencia@kitchell.com)