



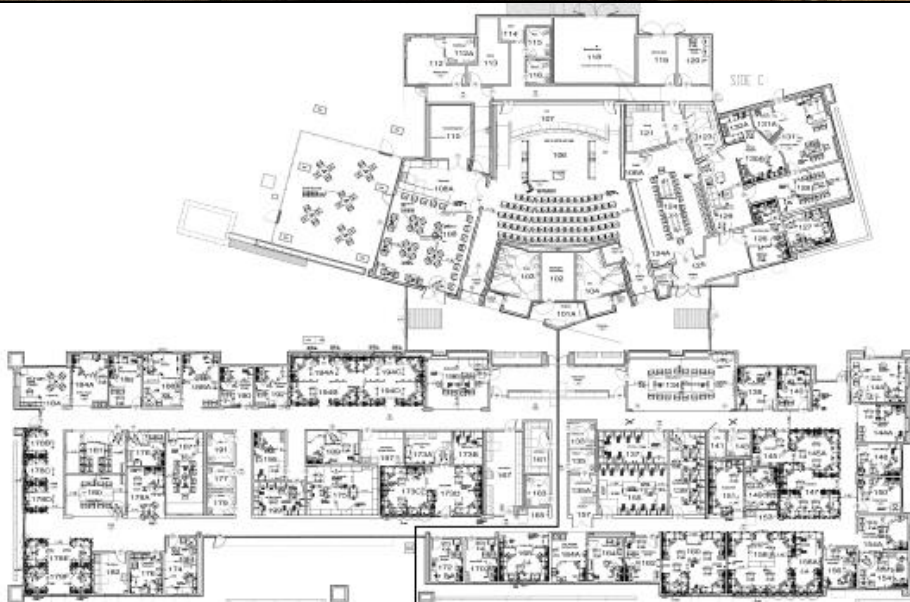
## UPDATES & ACTIVITIES THAT MAY IMPACT CAMPUS OPERATION

*Week of November 28, 2016*

### DISTRICT OFFICE BUILDING

**Work this week:** Contractor will continue to work on punch list items this week. All central services staff has moved in to the new building. Working on liquidation of furniture from old central services building in preparation for the demolition of the old buildings.

**Access:** None.  
**Noise:** None.  
**Parking:** None.  
**Utilities:** None.  
**Odors:** None.  
**Dust:** None.



OVERALL FURNITURE PLAN

## WEST CAMPUS ROADS PHASE I (AREAS 3 & 4)

**Work this week:** Contractor will be working on landscape, irrigation, and punch list items.

**Access:** Please see map below for campus navigation.

**Noise:** Low noise due to minor construction work.

**Parking:** All parking lots are open with the exception of Lot 209 & 211.

**Utilities:** None anticipated.

**Odors:** None anticipated.

**Dust:** Moderate impact due to construction related activities.



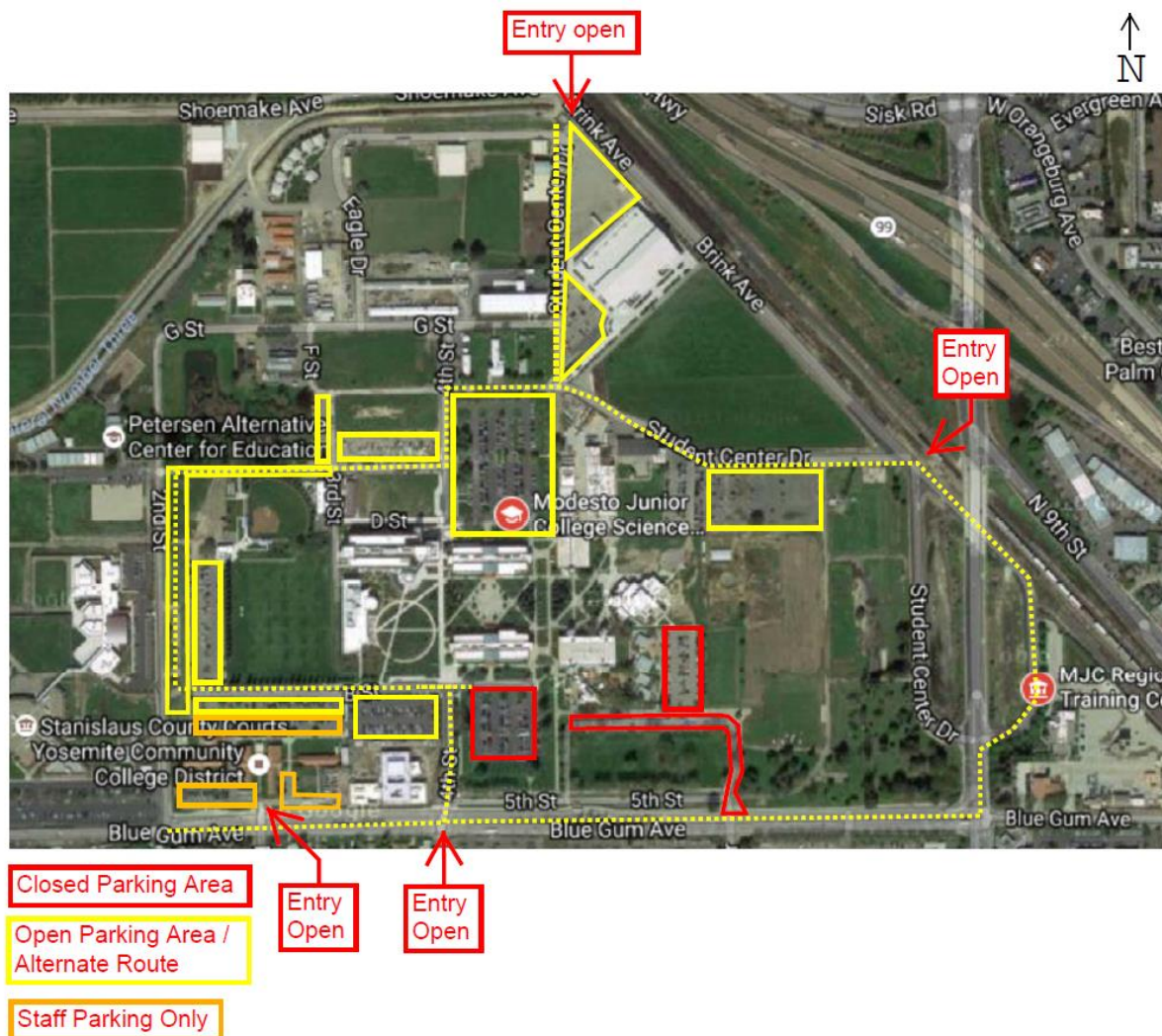




## WEST CAMPUS ROADS PHASE IIA (AREA 5 & 6)

**Work this week:** Concrete & landscape work continues.

- Access:** The west loop road is now open.  
**Noise:** Extreme noise due to heavy construction equipment.  
**Parking:** All parking lots are open with the exception of Lot 209 & 211.  
**Utilities:** None anticipated.  
**Odors:** None anticipated.  
**Dust:** Moderate impact due to construction related activities.



If there are any questions or concerns please contact Kitchell CEM, located at  
2201 Blue Gum Ave., Modesto CA 95358 Tel: 575-6991 E-mail: [avalencia@kitchell.com](mailto:avalencia@kitchell.com)