



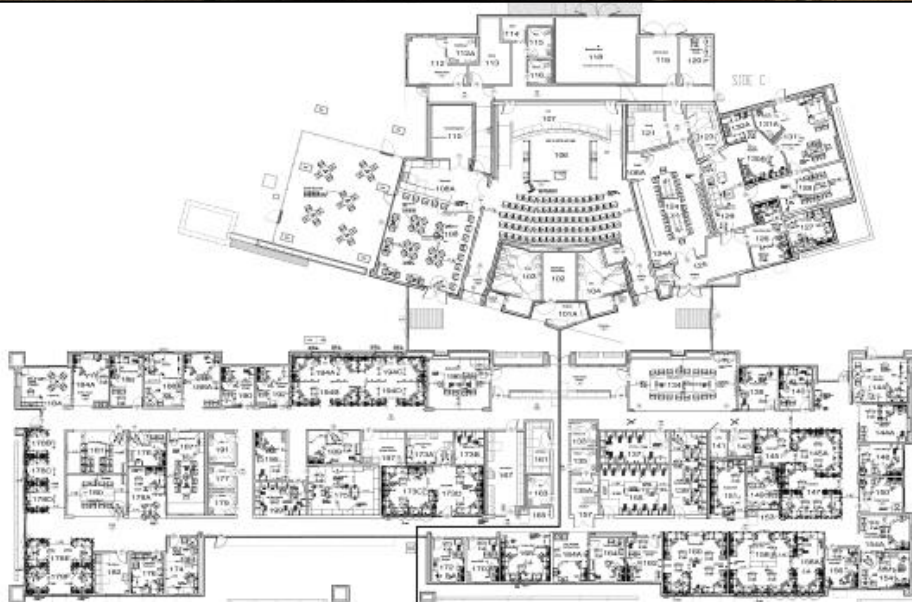
## UPDATES & ACTIVITIES THAT MAY IMPACT CAMPUS OPERATION

*Week of November 21, 2016*

### DISTRICT OFFICE BUILDING

**Work this week:** Contractor will continue to work on punch list items this week. All central services staff has moved in to the new building.

**Access:** None.  
**Noise:** None.  
**Parking:** None.  
**Utilities:** None.  
**Odors:** None.  
**Dust:** None.



OVERALL FURNITURE PLAN



## WEST CAMPUS ROADS PHASE I (AREAS 3 & 4)

**Work this week:** Punch list items for landscape & irrigation will occur for a few weeks.

**Access:** Please see map below for campus navigation.  
**Noise:** Low noise due to minor construction work.  
**Parking:** All parking lots are open with the exception of Lot 209 & 211.  
**Utilities:** None anticipated.  
**Odors:** None anticipated.  
**Dust:** Moderate impact due to construction related activities.



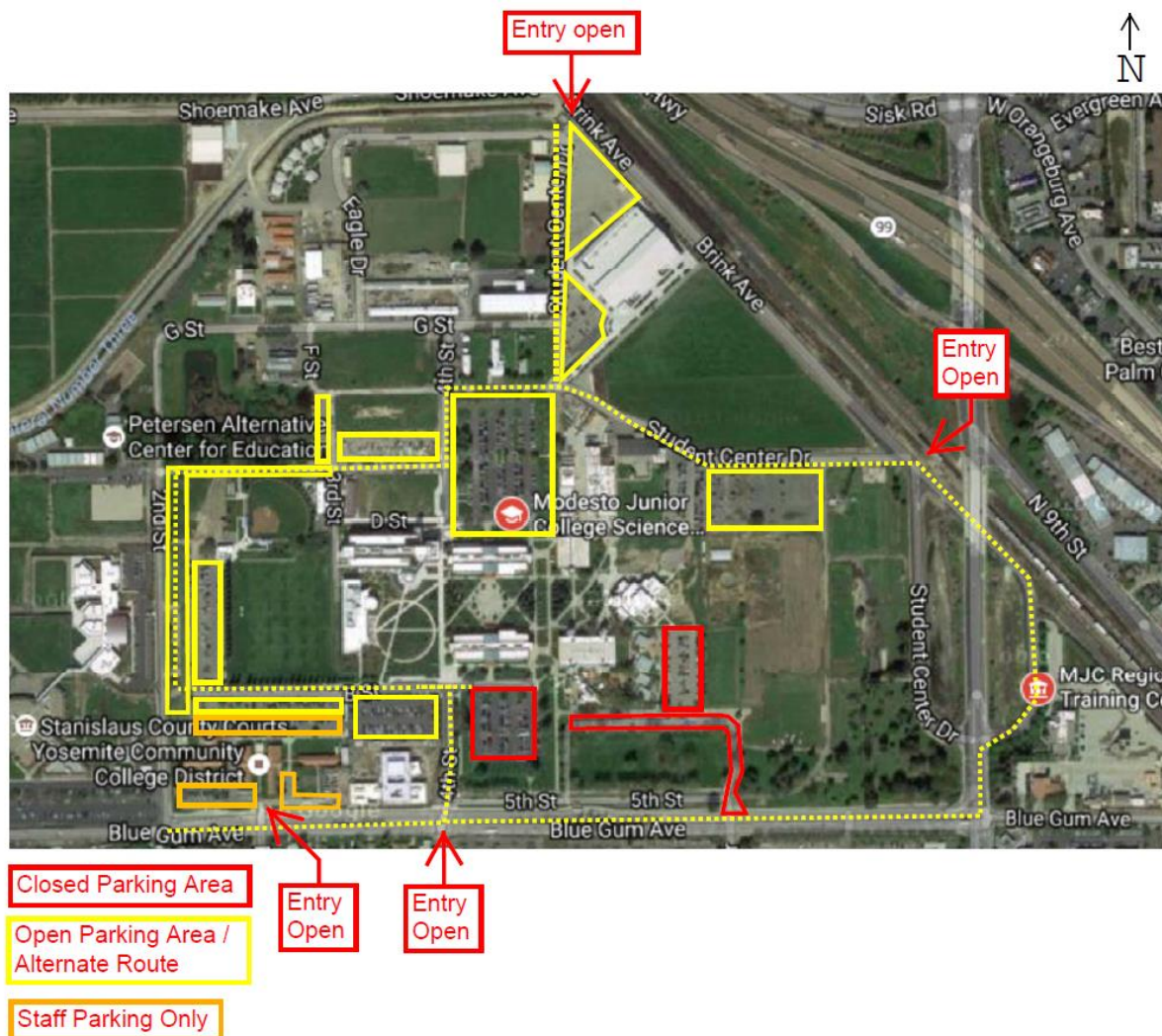




## WEST CAMPUS ROADS PHASE IIA (AREA 5 & 6)

**Work this week:** This week the contractor will work on electrical, landscaping, and irrigation. Striping & concrete flat work will follow towards the end of the week.

- Access:** The west loop road is now open.  
**Noise:** Extreme noise due to heavy construction equipment.  
**Parking:** All parking lots are open with the exception of Lot 209 & 211.  
**Utilities:** None anticipated.  
**Odors:** None anticipated.  
**Dust:** Moderate impact due to construction related activities.



If there are any questions or concerns please contact Kitchell CEM, located at  
2201 Blue Gum Ave., Modesto CA 95358 Tel: 575-6991 E-mail: [avalencia@kitchell.com](mailto:avalencia@kitchell.com)