



# Measure E Bond Program MODESTO JUNIOR COLLEGE CAMPUS CONSTRUCTION UPDATE

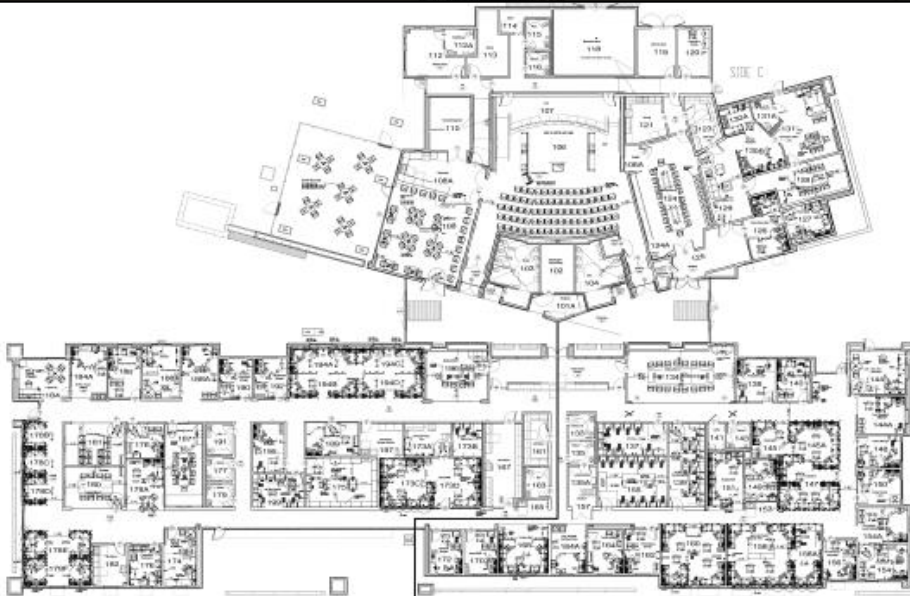


## UPDATES & ACTIVITIES THAT MAY IMPACT CAMPUS OPERATION *Week of October 17, 2016*

### DISTRICT OFFICE BUILDING

**Work this week:** Contractor will continue to work on punch list items this week.

**Access:** None.  
**Noise:** Moderate due to construction equipment.  
**Parking:** None.  
**Utilities:** None.  
**Odors:** None.  
**Dust:** Minor impact.



OVERALL FURNITURE PLAN

## WEST CAMPUS ROADS PHASE I (AREAS 3 & 4)

**Work this week:** The contractor will continue to work on irrigation and punch list items.

**Access:** Please see map below for campus navigation.

**Noise:** Low noise due to construction.

**Parking:** All parking lots are open with the exception of Lot 209 & 211.

**Utilities:** None anticipated.

**Odors:** None anticipated.

**Dust:** Moderate impact due to construction related activities.



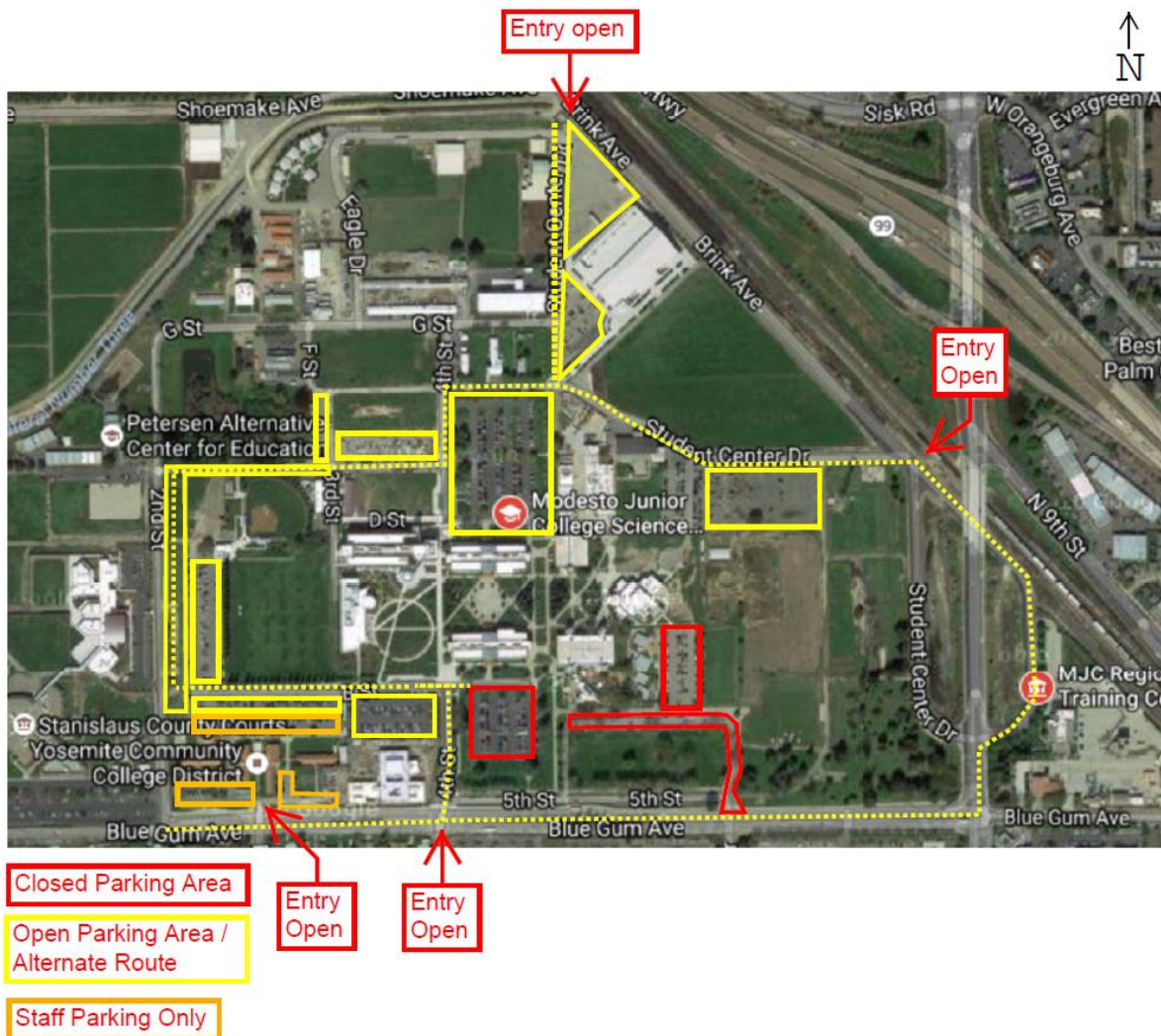




## WEST CAMPUS ROADS PHASE IIA (AREA 5)

**Work this week:** Contractor will work on irrigation, concrete flatwork, and final grading.

**Access:** The new 2<sup>nd</sup> street is now open.  
**Noise:** Extreme noise due to heavy construction equipment.  
**Parking:** All parking lots are open with the exception of Lot 209 & 211.  
**Utilities:** None anticipated.  
**Odors:** None anticipated.  
**Dust:** Moderate impact due to construction related activities.



If there are any questions or concerns please contact Kitchell CEM, located at  
2201 Blue Gum Ave., Modesto CA 95358 Tel: 575-6991 E-mail: [avalencia@kitchell.com](mailto:avalencia@kitchell.com)