



Measure E Bond Program MODESTO JUNIOR COLLEGE CAMPUS CONSTRUCTION UPDATE



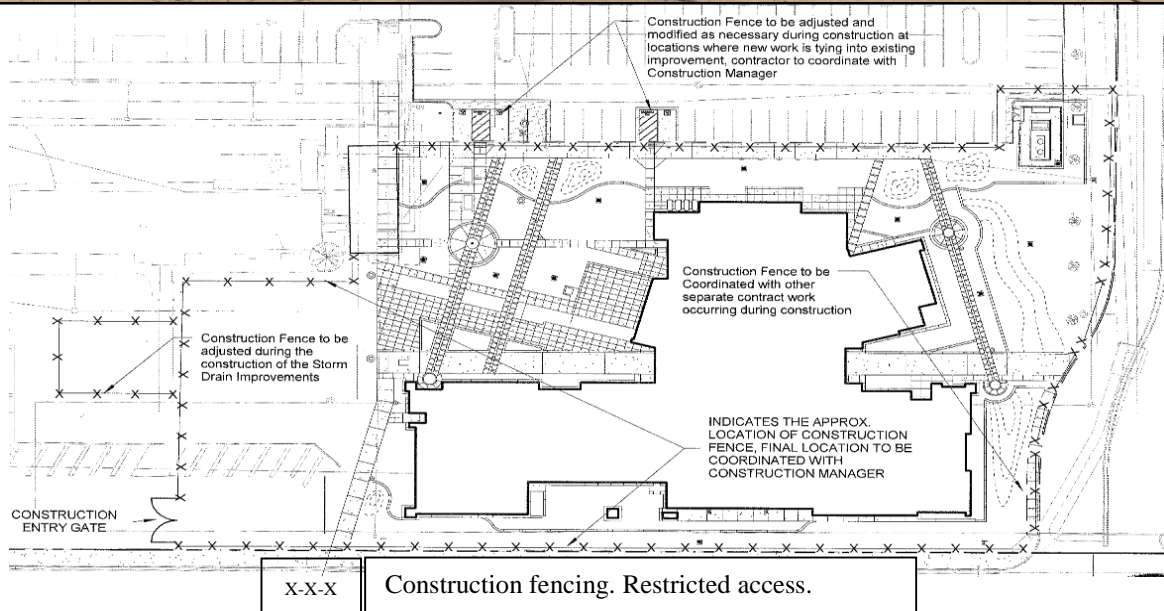
UPDATES & ACTIVITIES THAT MAY IMPACT CAMPUS OPERATION

Week of September 26, 2016

DISTRICT OFFICE BUILDING

Work this week: Contractor will continue to work on landscaping, audio visual installation, furniture installation, and finishing carpet.

Access: None.
Noise: Moderate due to construction equipment.
Parking: None.
Utilities: None.
Odors: None.
Dust: Minor impact.





WEST CAMPUS ROADS PHASE I (AREAS 3 & 4)

Work this week: Working on landscape, irrigation, and side walk between football field and softball.

Access: Please see Areas 5 & 6 map for campus navigation.

Noise: Extreme noise due to heavy construction equipment.

Parking: Parking Lot 202 will only have parking access at the southern stalls. Parking lot 209 is closed.

Utilities: None anticipated.

Odors: None anticipated.

Dust: Moderate impact due to construction related activities.





Measure E Bond Program MODESTO JUNIOR COLLEGE CAMPUS CONSTRUCTION UPDATE

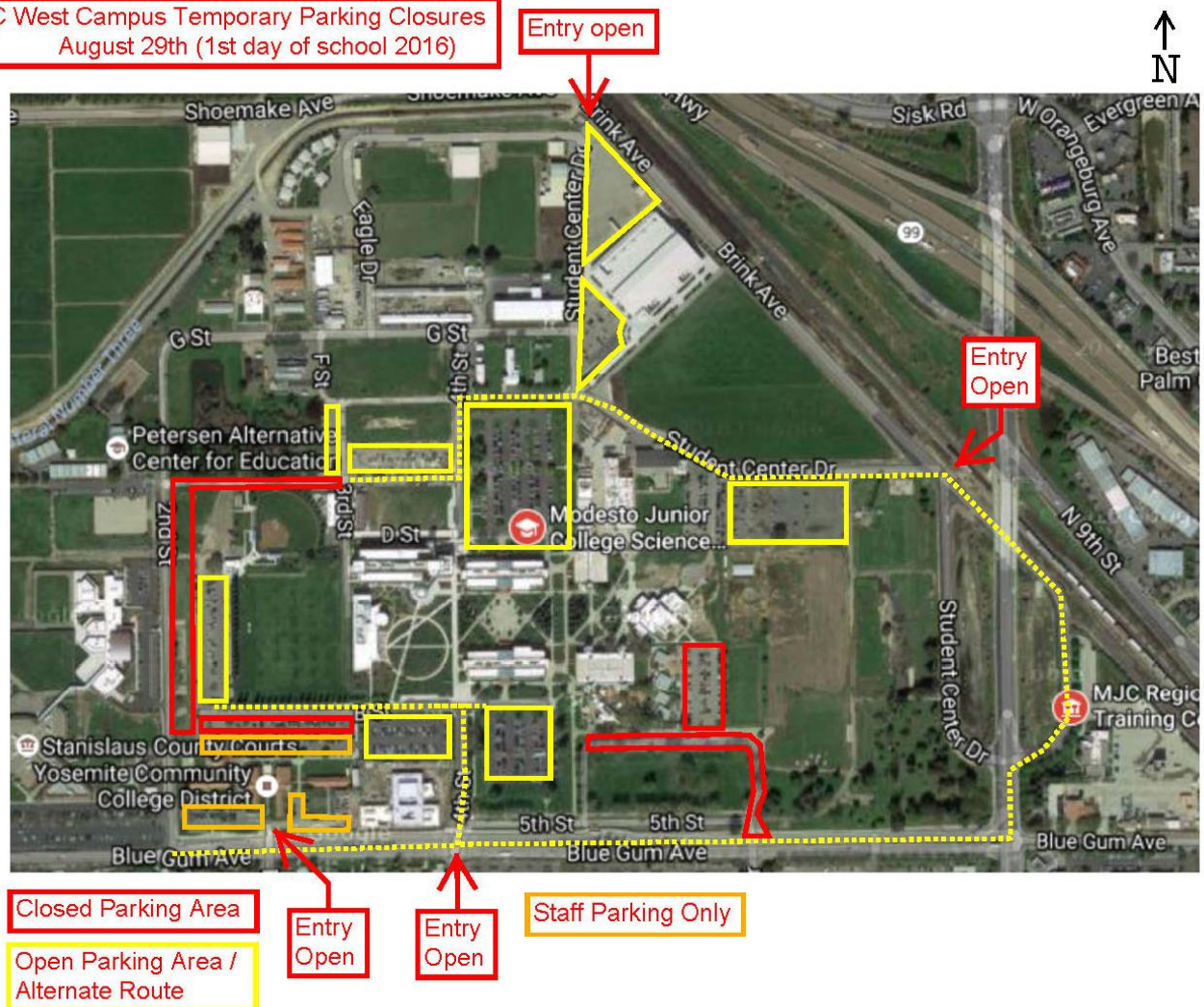
Page 3 of 4

WEST CAMPUS ROADS PHASE IIA (AREA 5)

Work this week: Continue working on B Street.

- Access:** Parking Lot 203, 207, 211, & 215 are now open.
- Noise:** Extreme noise due to heavy construction equipment.
- Parking:** Parking Lot 202 will only have parking access at the southern stalls. Parking lot 209 is closed.
- Utilities:** None anticipated.
- Odors:** None anticipated.
- Dust:** Moderate impact due to construction related activities.

MJC West Campus Temporary Parking Closures
August 29th (1st day of school 2016)



If there are any questions or concerns please contact Kitchell CEM, located at
2201 Blue Gum Ave., Modesto CA 95358 Tel: 575-6991 E-mail: avalencia@kitchell.com