



Measure E Bond Program MODESTO JUNIOR COLLEGE CAMPUS CONSTRUCTION UPDATE



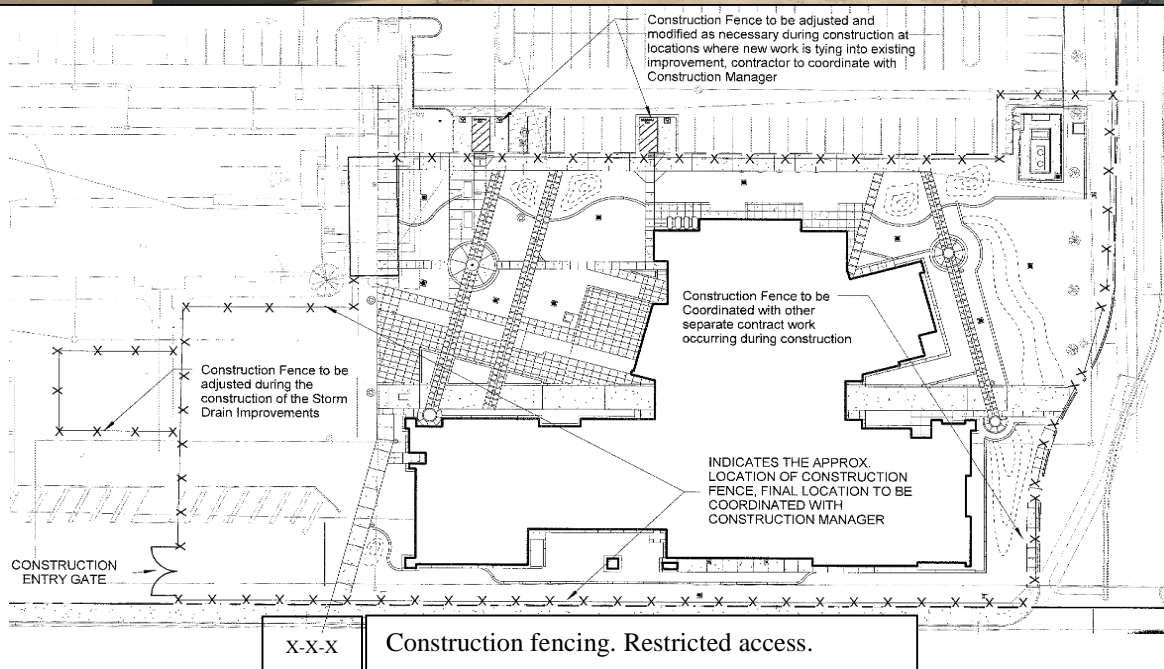
UPDATES & ACTIVITIES THAT MAY IMPACT CAMPUS OPERATION

Week of August 29, 2016

DISTRICT OFFICE BUILDING

Work this week: Contractor will continue to work on interior and exterior lighting, flooring, low-voltage finish, and landscaping.

Access: None.
Noise: Moderate due to construction equipment.
Parking: None.
Utilities: None.
Odors: None.
Dust: Minor impact.





Measure E Bond Program MODESTO JUNIOR COLLEGE CAMPUS CONSTRUCTION UPDATE Page 2 of 4

WEST CAMPUS ROADS PHASE I (AREAS 3 & 4)

Work this week: Concrete work will continue at Parking Lot 202. Access will be made available for students to park in Lot 203. Electrical & irrigation work will also continue.

Access: Please see map for campus navigation.

Noise: Extreme noise due to heavy construction equipment.

Parking: Parking Lot 202 will only have parking access at the southern stalls. Parking Lot 209 is closed.

Utilities: None anticipated.

Odors: None anticipated.

Dust: Moderate impact due to construction related activities.





Measure E Bond Program MODESTO JUNIOR COLLEGE CAMPUS CONSTRUCTION UPDATE

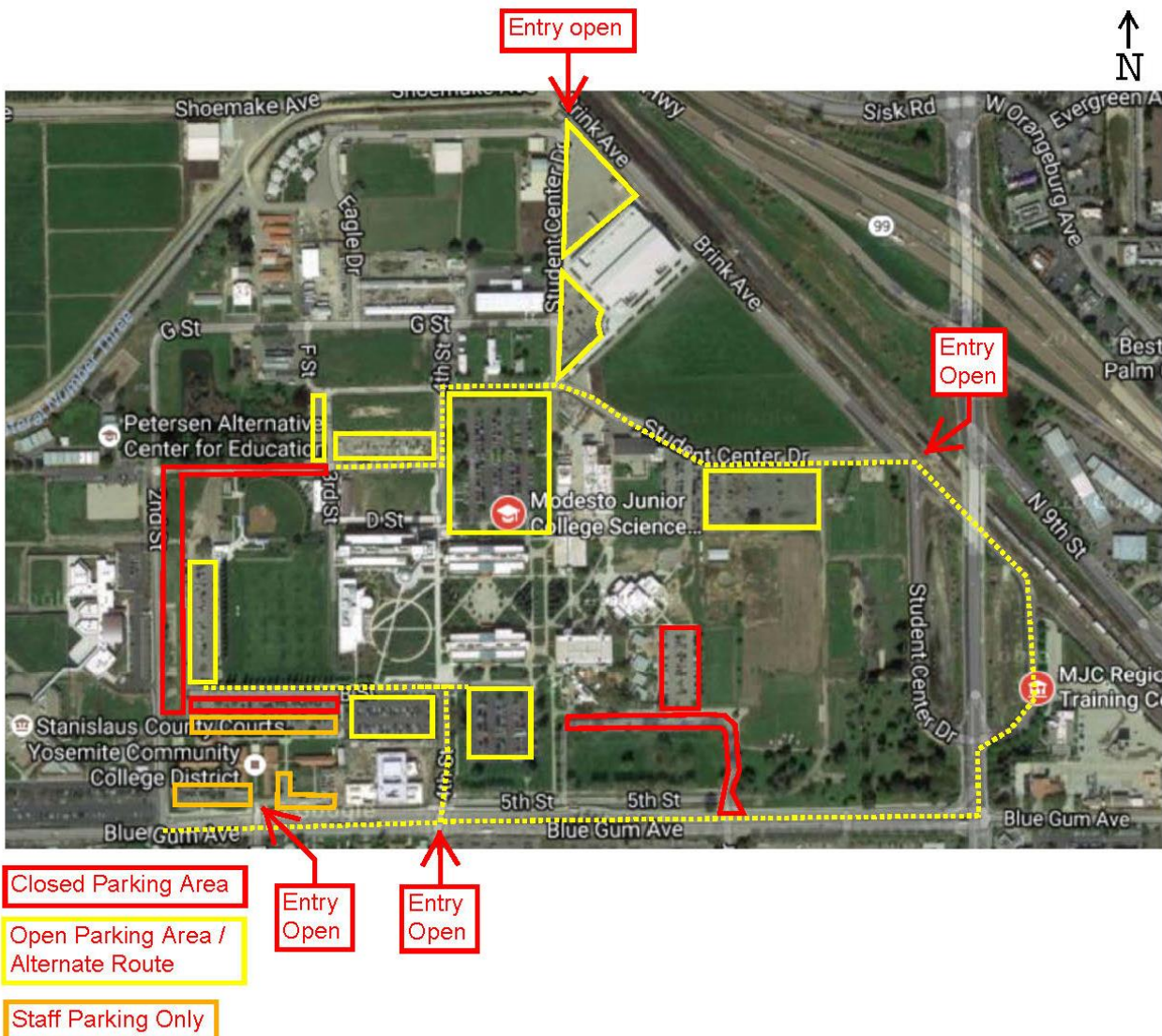
Page 3 of 4

WEST CAMPUS ROADS PHASE IIA (AREA 5)

Work this week: Rough grade work will continue along with surveying for electrical work.

- Access:** Parking Lot 203, 207, 211 & 215 are now open.
- Noise:** Extreme noise due to heavy construction equipment.
- Parking:** Parking Lot 202 will only have parking access at the southern stalls. Parking lot 209 is closed.
- Utilities:** None anticipated.
- Odors:** None anticipated.
- Dust:** Moderate impact due to construction related activities.

MJC West Campus Temporary Parking Closures
August 29th (1st day of school 2016)





EXTERIOR PAINTING PROJECT MUSIC BUILDING AND MARY STUART ROGERS

Work this week: Looking to start prepping and painting the exterior of Mary Stuart Rogers Building. Contractor will start by scraping peeling paint, spot priming, pressure washing the building, protecting vegetation, nearby cars and equipment from overspray, once painting begins.

Access: None anticipated
Noise: Minor noise due to painting equipment.
Parking: None anticipated.
Utilities: None anticipated.
Odors: None anticipated.
Dust: Minor impact due to cleaning and painting exterior of building.



If there are any questions or concerns please contact Kitchell CEM, located at
2201 Blue Gum Ave., Modesto CA 95358 Tel: 575-6991 E-mail: avalencia@kitchell.com