



Measure E Bond Program MODESTO JUNIOR COLLEGE CAMPUS CONSTRUCTION UPDATE



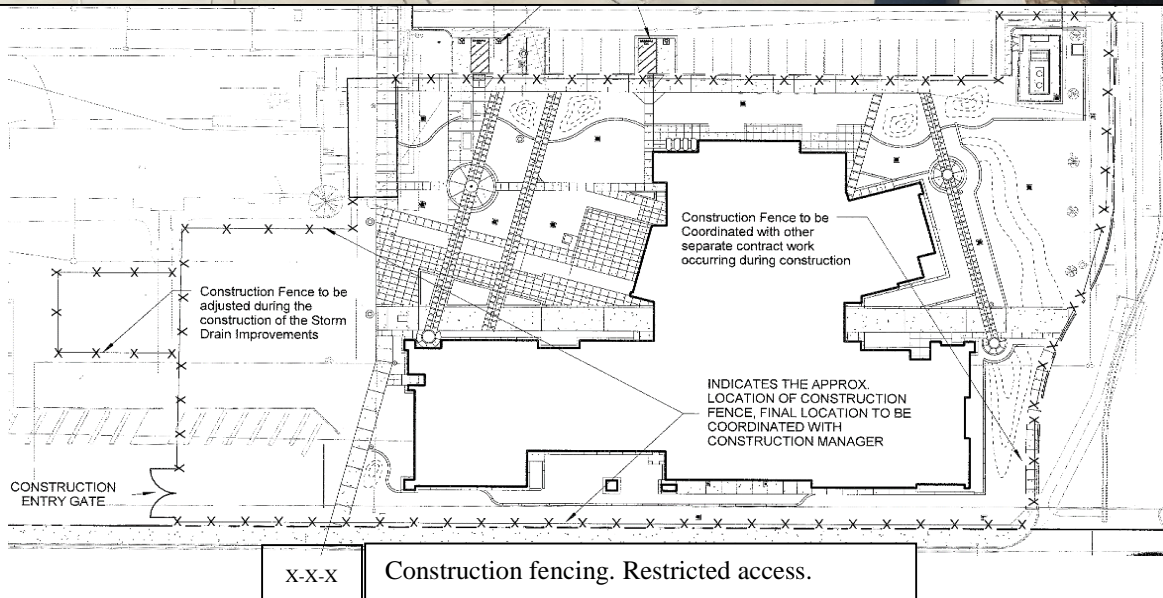
UPDATES & ACTIVITIES THAT MAY IMPACT CAMPUS OPERATION

Week of August 22, 2016

DISTRICT OFFICE BUILDING

Work this week: Contractor will continue to work on interior and exterior lighting, flooring, low-voltage finish, and landscaping.

Access: None
Noise: Moderate due to construction equipment.
Parking: None
Utilities: None
Odors: None
Dust: Minor impact.





Measure E Bond Program MODESTO JUNIOR COLLEGE CAMPUS CONSTRUCTION UPDATE

Page 2 of 4

WEST CAMPUS ROADS PHASE I (AREAS 3 & 4)

Work this week: Work will continue to run along 2nd Street and in parking lots 202 & 203. Work ranges from demolition and grading to electrical, irrigation and concrete installations. Parking Lot 207 is open for staff & student parking.

Access: Please see map for campus navigation.

Noise: Extreme noise due to heavy construction equipment.

Parking: Parking Lot 203, 209 & 211 are closed until further notice. Parking Lot 202 will only have parking access at the southern stalls. Parking Lot 207 & 215 is now open.

Utilities: None anticipated.

Odors: None anticipated.

Dust: Moderate impact due to construction related activities.





Measure E Bond Program MODESTO JUNIOR COLLEGE CAMPUS CONSTRUCTION UPDATE

Page 3 of 4

WEST CAMPUS ROADS PHASE IIA (AREA 5)

Work this week: Underground utility work will come to a close while concrete form work for the islands at Parking Lot 211 will begin. Rough grading will occur along B Street in front of the MeWuk building towards the Wawona Child Care Center.

Access: Please see map for campus navigation.

Noise: Extreme noise due to heavy construction equipment.

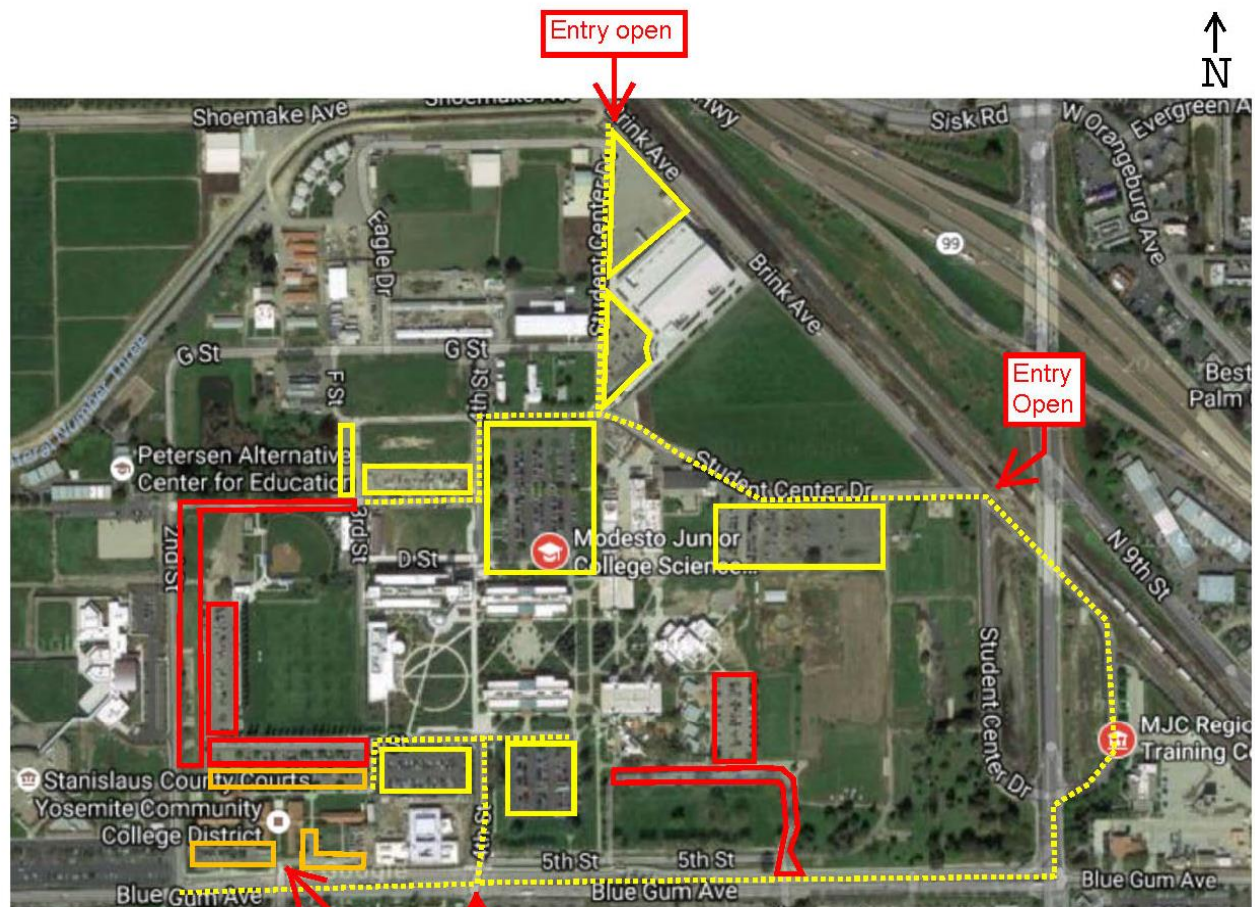
Parking: Parking Lot 203, 209 & 211 are closed until further notice. Parking Lot 202 will only have parking access at the southern stalls. Parking Lot 207 & 215 is now open.

Utilities: None anticipated.

Odors: None anticipated.

Dust: Moderate impact due to construction related activities.

MJC West Campus Temporary Parking Closures
August 29th (1st day of school 2016)



Closed Parking Area

Open Parking Area /
Alternate Route

Staff Parking Only

Entry
Open

Entry
Open



SOLAR ARRAY PROJECT

Work this week: Adjustments to electrical wiring throughout the parking lot.

Access: Sections will be closed off throughout the week.

Noise: None.

Parking: Lot 215 will be open but sections will be closed off throughout the week.

Utilities: None.

Odors: None.

Dust: None.



If there are any questions or concerns please contact Kitchell CEM, located at
2201 Blue Gum Ave., Modesto CA 95358 Tel: 575-6991 E-mail: avalencia@kitchell.com