



Measure E Bond Program MODESTO JUNIOR COLLEGE CAMPUS CONSTRUCTION UPDATE

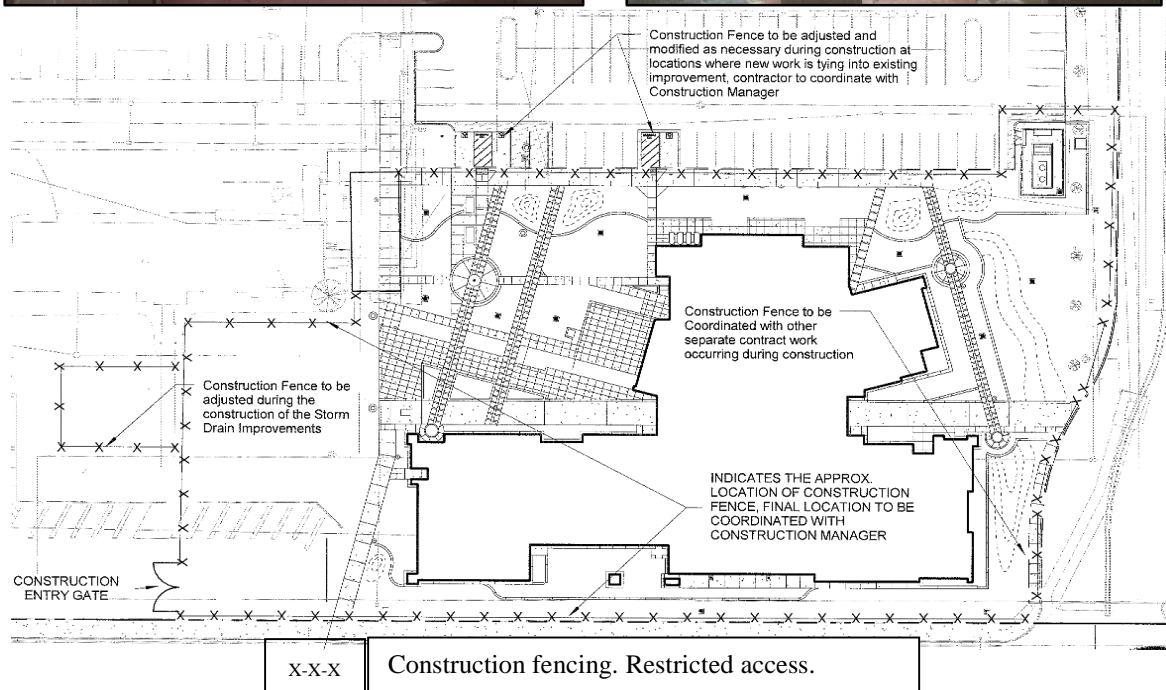
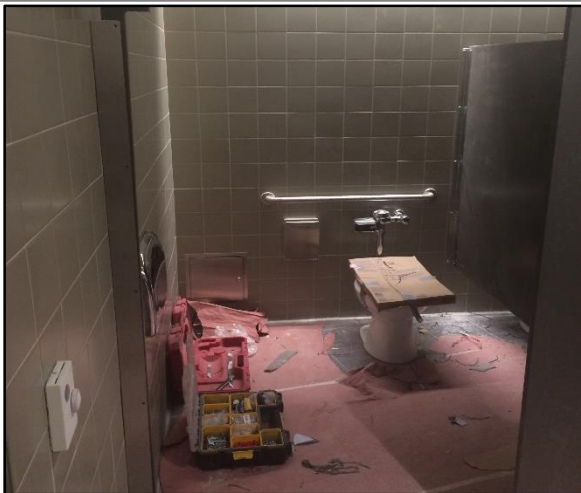


UPDATES & ACTIVITIES THAT MAY IMPACT CAMPUS OPERATION *Week of August 8, 2016*

DISTRICT OFFICE BUILDING

Work this week: Contractor will continue to work on lighting, interior paint, pulling wire, site grading, site concrete, electrical finish, and landscaping.

Access: None
Noise: Moderate due to construction equipment.
Parking: None
Utilities: None
Odors: None
Dust: Minor impact.





WESTERLY ROADS AREAS 3 & 4

Work this week: Work continues along 2nd Street and in parking lots 202 & 203. Work ranges from demolition and grading to electrical, irrigation and concrete installations. Parking Lot 207 will be closed as asphalt cleaning & slurry seal application will occur through the week.

Access: Please see Areas 5 & 6 map for campus navigation.

Noise: Extreme noise due to heavy construction equipment.

Parking: Parking Lot 203, 207 & 209 are closed until further notice. Parking Lot 202 will only have parking access at the southern stalls. Parking availability at Parking Lot 211 & 215.

Utilities: None anticipated.

Odors: None anticipated.

Dust: Moderate impact due to construction related activities.



WESTERLY ROADS AREAS 5 & 6

Work this week: Irrigation & underground utility work will be occurring through the week.

Access: Please see map below for campus navigation.

Noise: Extreme noise due to heavy construction equipment.

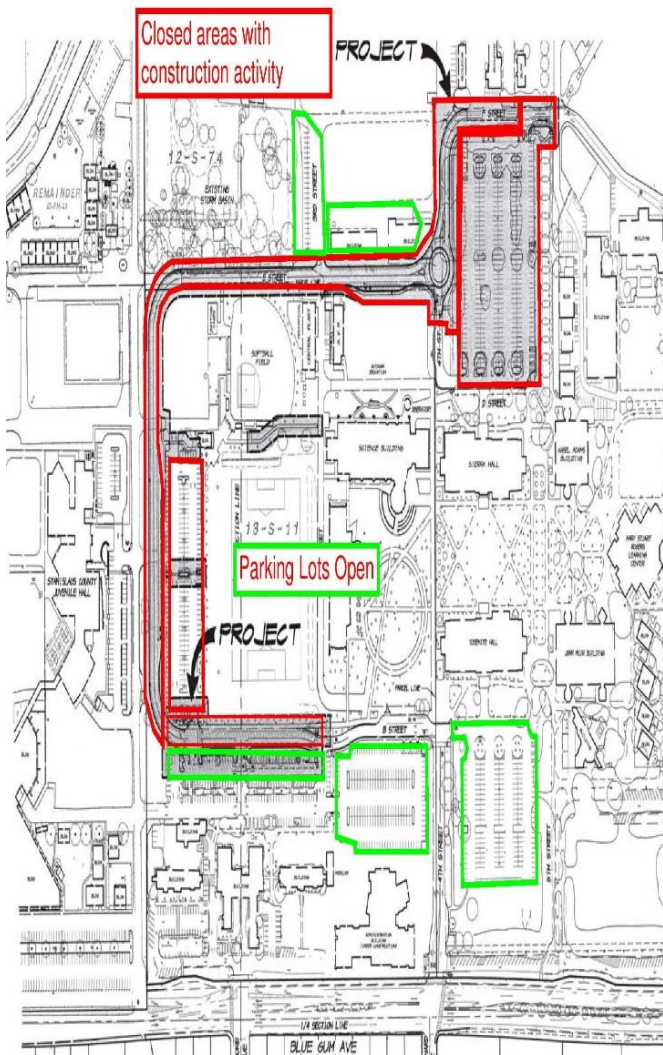
Parking: Parking Lot 203, 207 & 209 are closed until further notice. Parking Lot 202 will only have parking access at the southern stalls. Parking availability at Parking Lot 211 & 215.

Utilities: None anticipated.

Odors: None anticipated.

Dust: Moderate impact due to construction related activities.

MJC West Campus Westerly Roads Areas 3 & 4 Project





SOLAR ARRAY PROJECT

Work this week: Contractor continues to work on site cleanup.

Access: None.
Noise: None.
Parking: Lot 215 will be open.
Utilities: None.
Odors: None anticipated.
Dust: None.



If there are any questions or concerns please contact Kitchell CEM, located at
2201 Blue Gum Ave., Modesto CA 95358 Tel: 575-6991 E-mail: avalencia@kitchell.com