



Measure E Bond Program MODESTO JUNIOR COLLEGE CAMPUS CONSTRUCTION UPDATE

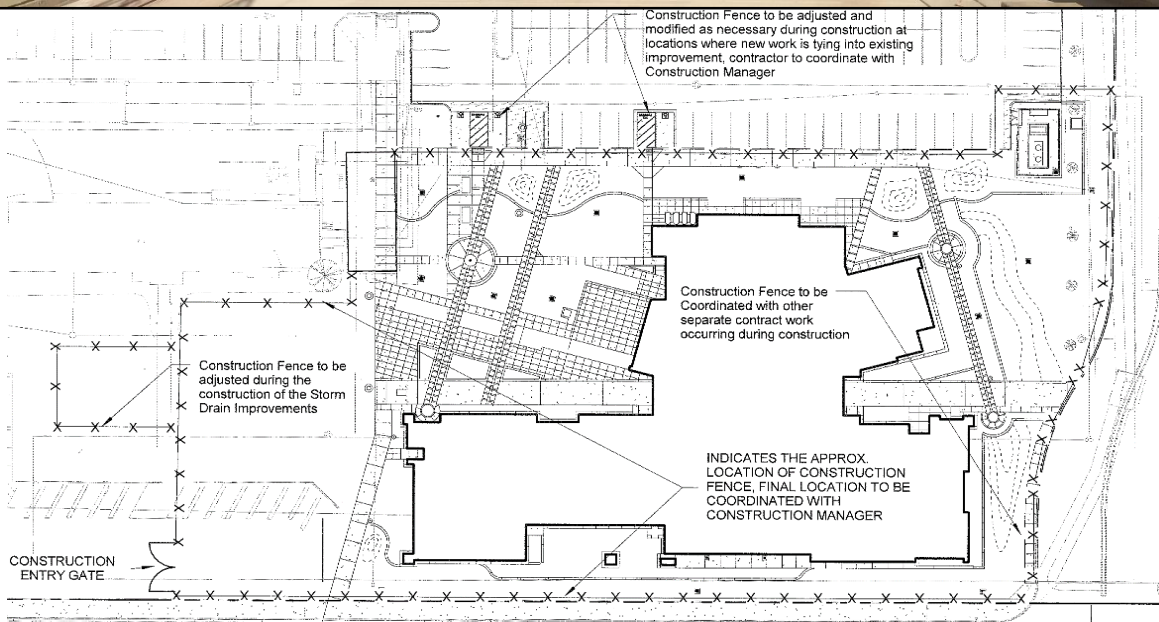


UPDATES & ACTIVITIES THAT MAY IMPACT CAMPUS OPERATION *Week of July 18, 2016*

DISTRICT OFFICE BUILDING

Work this week: Contractor will continue working on lighting, interior paint, pulling wire, site grading, and site concrete.

Access: None
Noise: Moderate due to construction equipment.
Parking: None
Utilities: None
Odors: None
Dust: Minor impact.



X-X-X Construction fencing. Restricted access.



WESTERLY ROADS AREAS 3 & 4

Work this week: Electrical and irrigation work is ongoing. Underground utility work will occur through the week on 2nd Street.

Access: Lot 207 is now open for parking.

Noise: Extreme noise due to heavy construction equipment.

Parking: Parking Lot 207 is now open for use along with the gravel lot across E Street.

Utilities: None anticipated.

Odors: None anticipated.

Dust: Moderate impact due to construction related activities.





Measure E Bond Program MODESTO JUNIOR COLLEGE CAMPUS CONSTRUCTION UPDATE

Page 3 of 4

WESTERLY ROADS AREAS 5 & 6

Work this week: Demolition work will continue for the first couple of days along with export of the material. Surveyors will be on-site through the week surveying rough grade.

Access: Lot 207 is now open for parking. Gravel lot across E Street open.

Noise: Extreme noise due to heavy construction equipment.

Parking: Parking Lot 209 & 2011 closed.

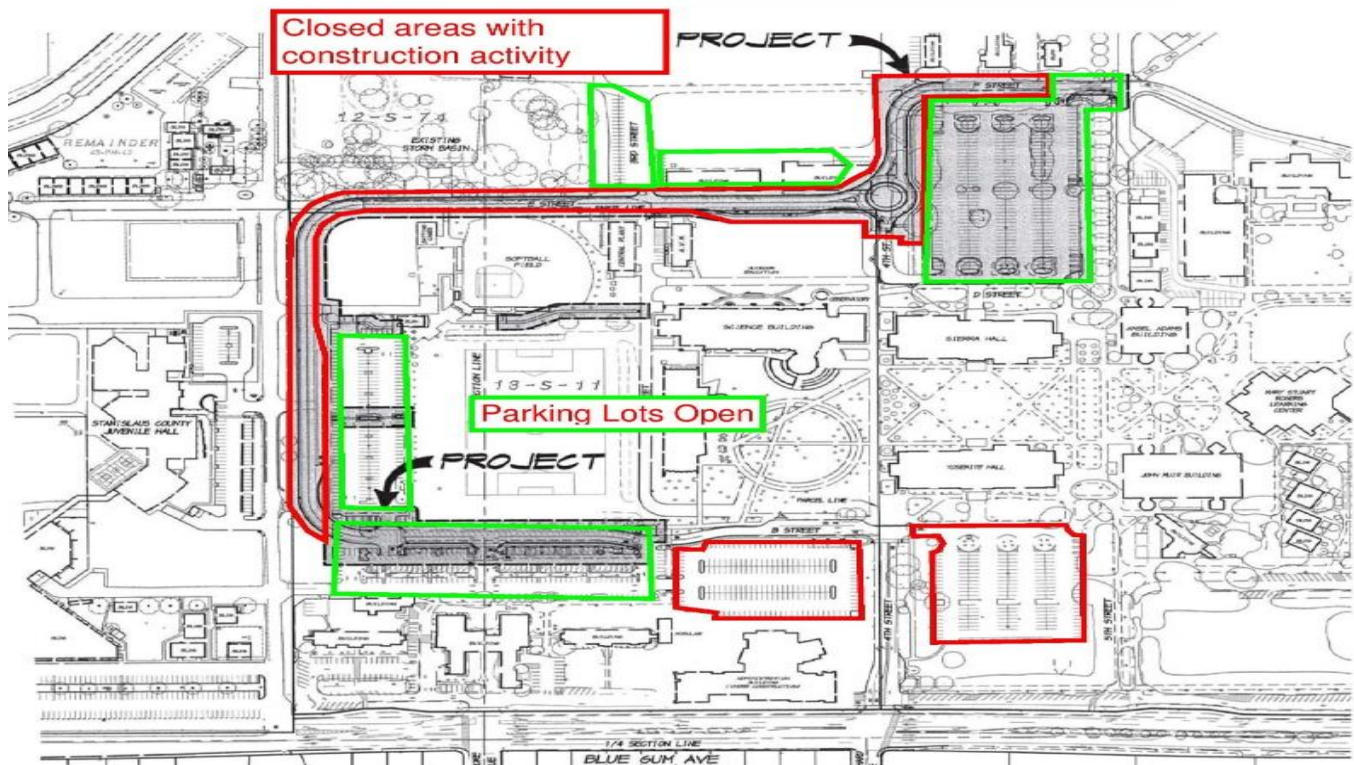
Utilities: None anticipated.

Odors: None anticipated.

Dust: Moderate impact due to construction related activities.



MJC West Campus Westerly Roads Areas 3 & 4 / 5 & 6 Projects

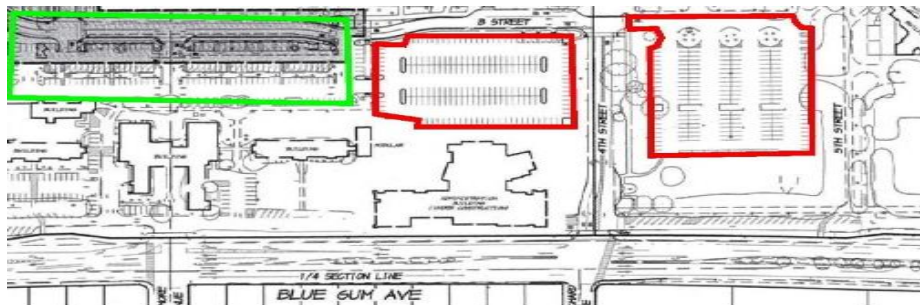




SOLAR ARRAY PROJECT

Work this week: Contractor continues to work on electrical installations.

Access: None.
Noise: Minimal noise due to heavy construction equipment.
Parking: Lot 215 will be closed.
Utilities: None.
Odors: None anticipated.
Dust: Minimal impact due to construction related activities.



Under Construction

Available Parking



If there are any questions or concerns please contact Kitchell CEM, located at
2201 Blue Gum Ave., Modesto CA 95358 Tel: 575-6991 E-mail: avalencia@kitchell.com