



# Measure E Bond Program MODESTO JUNIOR COLLEGE CAMPUS CONSTRUCTION UPDATE

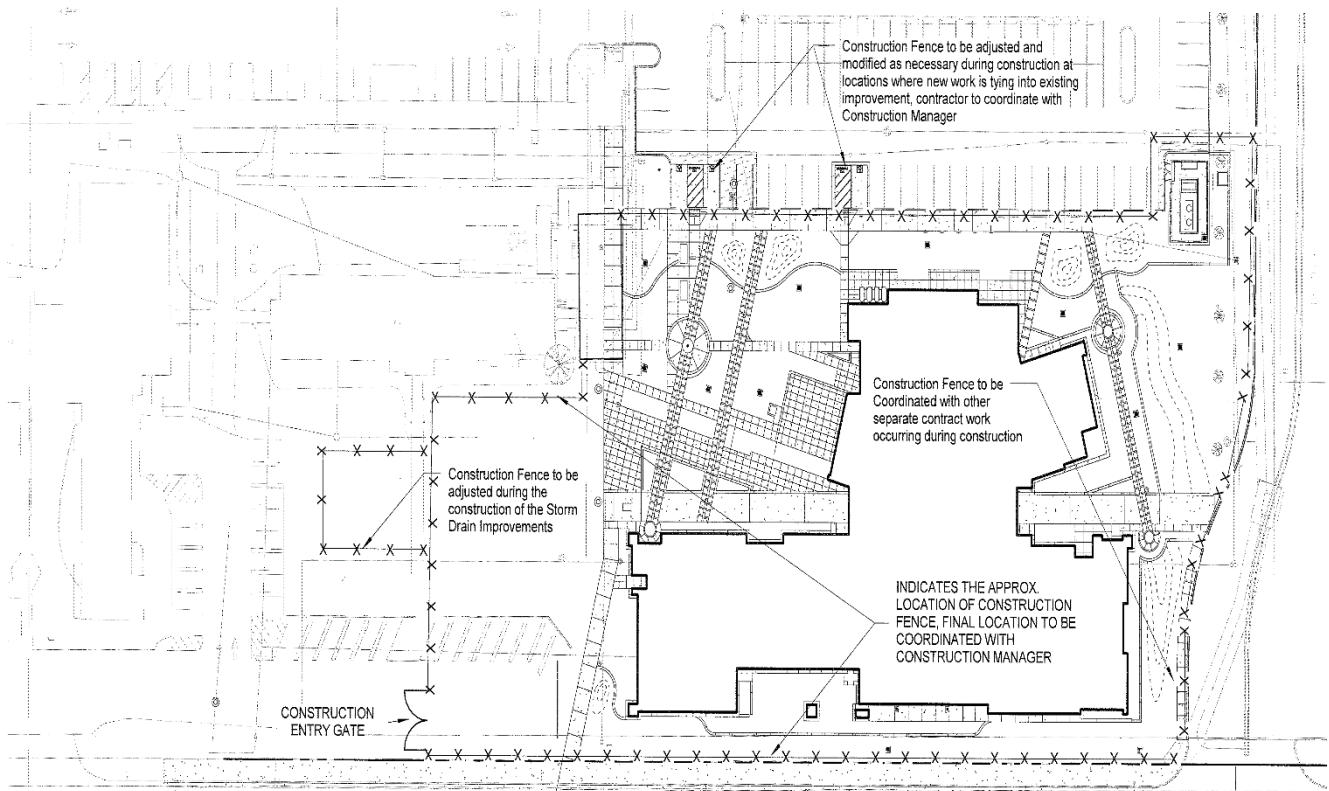


## UPDATES & ACTIVITIES THAT MAY IMPACT CAMPUS OPERATION *Week of May 18, 2015*

### DISTRICT OFFICE BUILDING

**Work this week:** Continue storm drain installation. Continued foundation layout. Start installation of catch basin.

<b>Access:</b>	No access to South ramp at building 1300
<b>Noise:</b>	Minor equipment noise
<b>Parking:</b>	Some parking loss for duration of project
<b>Utilities:</b>	None
<b>Odors:</b>	None
<b>Dust:</b>	Minor impact.



X-X-X

Construction fencing, Restricted access



# Measure E Bond Program MODESTO JUNIOR COLLEGE CAMPUS CONSTRUCTION UPDATE Page 2 of 5

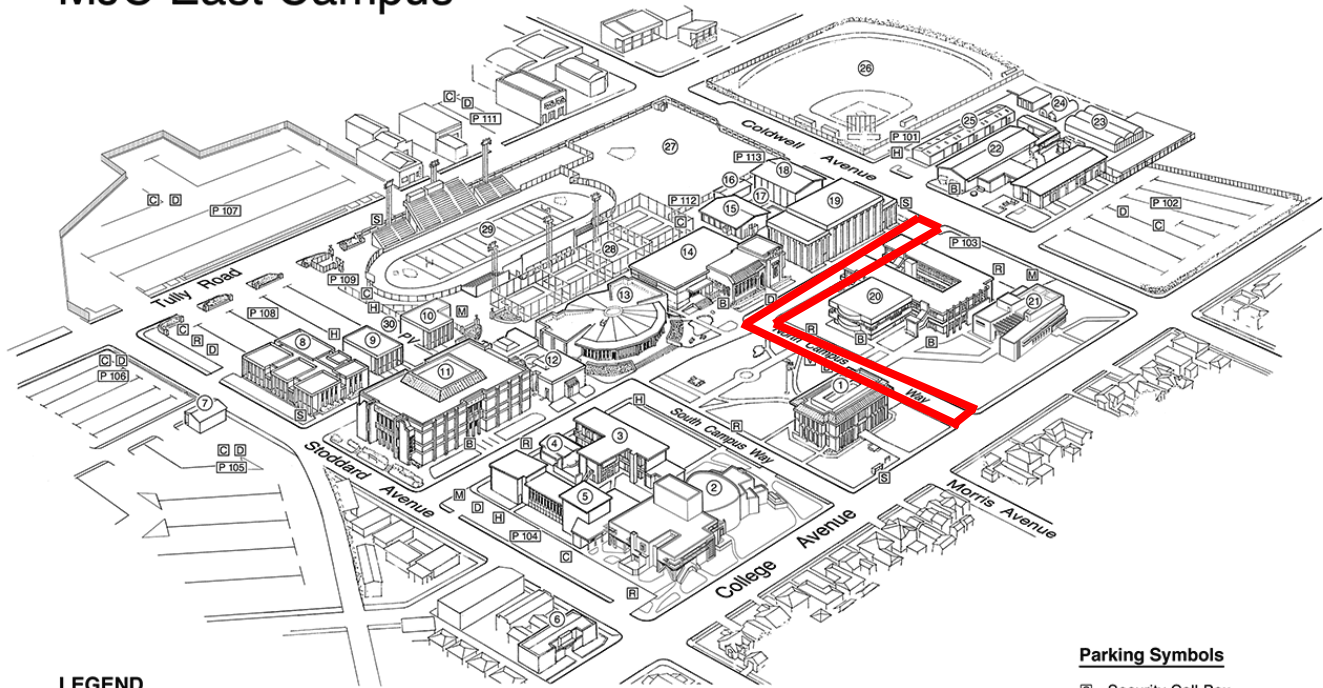
## EAST CAMPUS ROADS – NORTH DRIVE

**Work this week:** Layout and forming of sidewalks.

<b>Access:</b>	No access to North drive
<b>Noise:</b>	Moderate: Equipment
<b>Parking:</b>	No parking along North drive
<b>Utilities:</b>	None
<b>Odors:</b>	None
<b>Dust:</b>	None



## MJC East Campus



### LEGEND

- |                                    |                                      |                               |                      |
|------------------------------------|--------------------------------------|-------------------------------|----------------------|
| 1 Administration (Morris Memorial) | 7 Facilities Operations              | 15 Physical Education- Men    | 23 Greenhouse        |
| 2 Performing and Media Arts Center | 8 Electronics/ Computer Science      | 16 Physical Education Offices | 24 Propagation House |
| 3 Art                              | 9 Journalism                         | 17 Swimming Pool              | 25 Ag Storage        |
| 4 Art Gallery                      | 10 Classroom Annex                   | 18 Physical Education- Women  | 26 Athletic Field #2 |
| 5 Music                            | 11 Founders' Hall                    | 19 Gymnasium                  | 27 Athletic Field #1 |
| 6 Great Valley Museum              | 12 Forum                             | 20 Science                    | 28 Tennis Courts     |
|                                    | 13 Student Center                    | 21 Student Services           | 29 Stadium           |
|                                    | 14 Learning Resource Center/ Library | 22 Agriculture                | 30 Pirates' Village  |

### Parking Symbols

- ☒ Security Call Box
- ☒ Parking 101-113
- ☒ Parking Dispenser
- ☒ Disabled Parking
- ☒ Motorcycle Parking
- ☒ Reserved Parking
- ☒ Visitor Parking
- ☒ Bicycle Parking
- ☒ Prime Shine - Pirate Express Shuttle

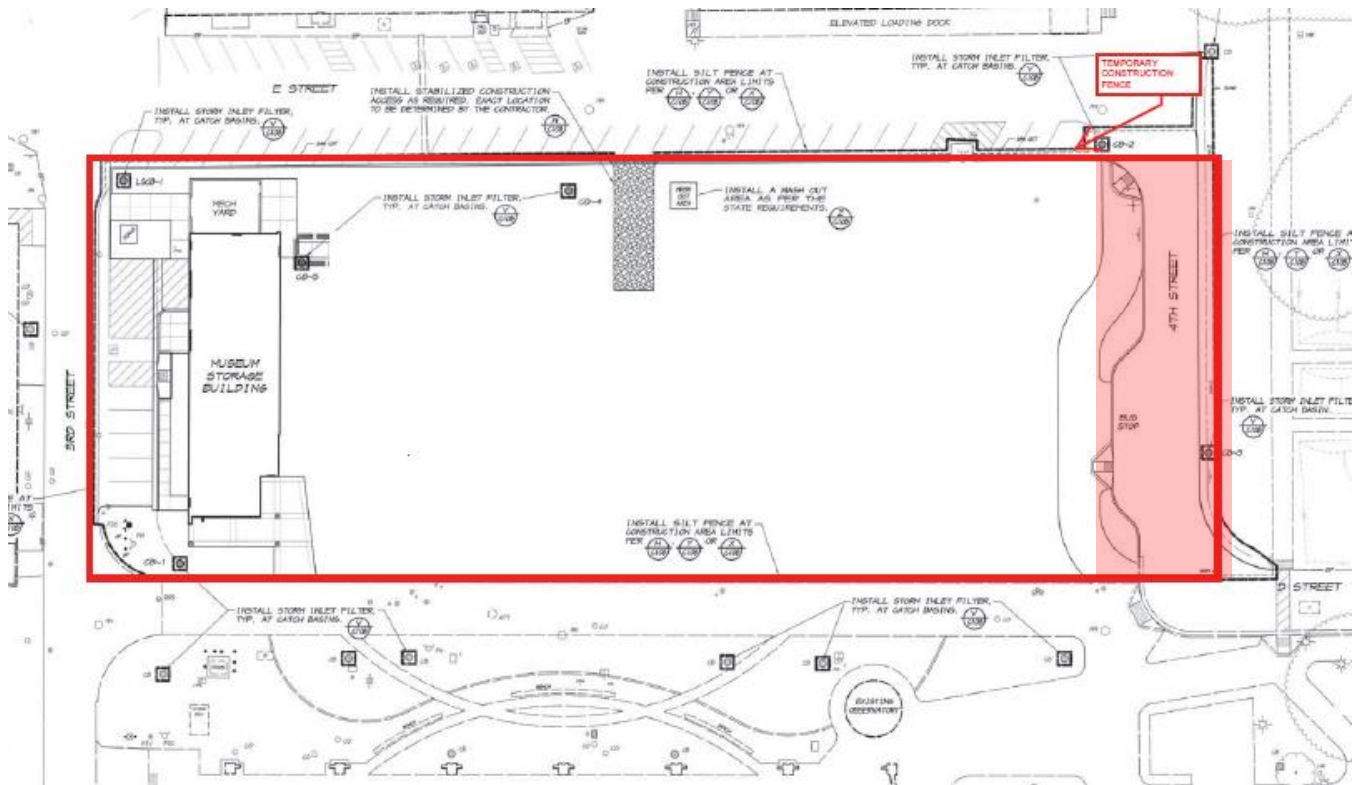


# Measure E Bond Program MODESTO JUNIOR COLLEGE CAMPUS CONSTRUCTION UPDATE Page 3 of 5

## GVM EDUCATION DEMONSTRATION CENTER

**Work this week:** Continued installation of restroom tile, restroom fixtures, interior painting and finishes.

<b>Access:</b>	Caution at 3 <sup>rd</sup> and E Street. Partial closure at 4 <sup>th</sup> Street. See map below
<b>Noise:</b>	Moderate: Heavy equipment deliveries
<b>Parking:</b>	None
<b>Utilities:</b>	None
<b>Odors:</b>	None
<b>Dust:</b>	None



	Construction fencing, Restricted access
	4 <sup>th</sup> Street closed for the duration of the project





# Measure E Bond Program MODESTO JUNIOR COLLEGE CAMPUS CONSTRUCTION UPDATE

Page 4 of 5

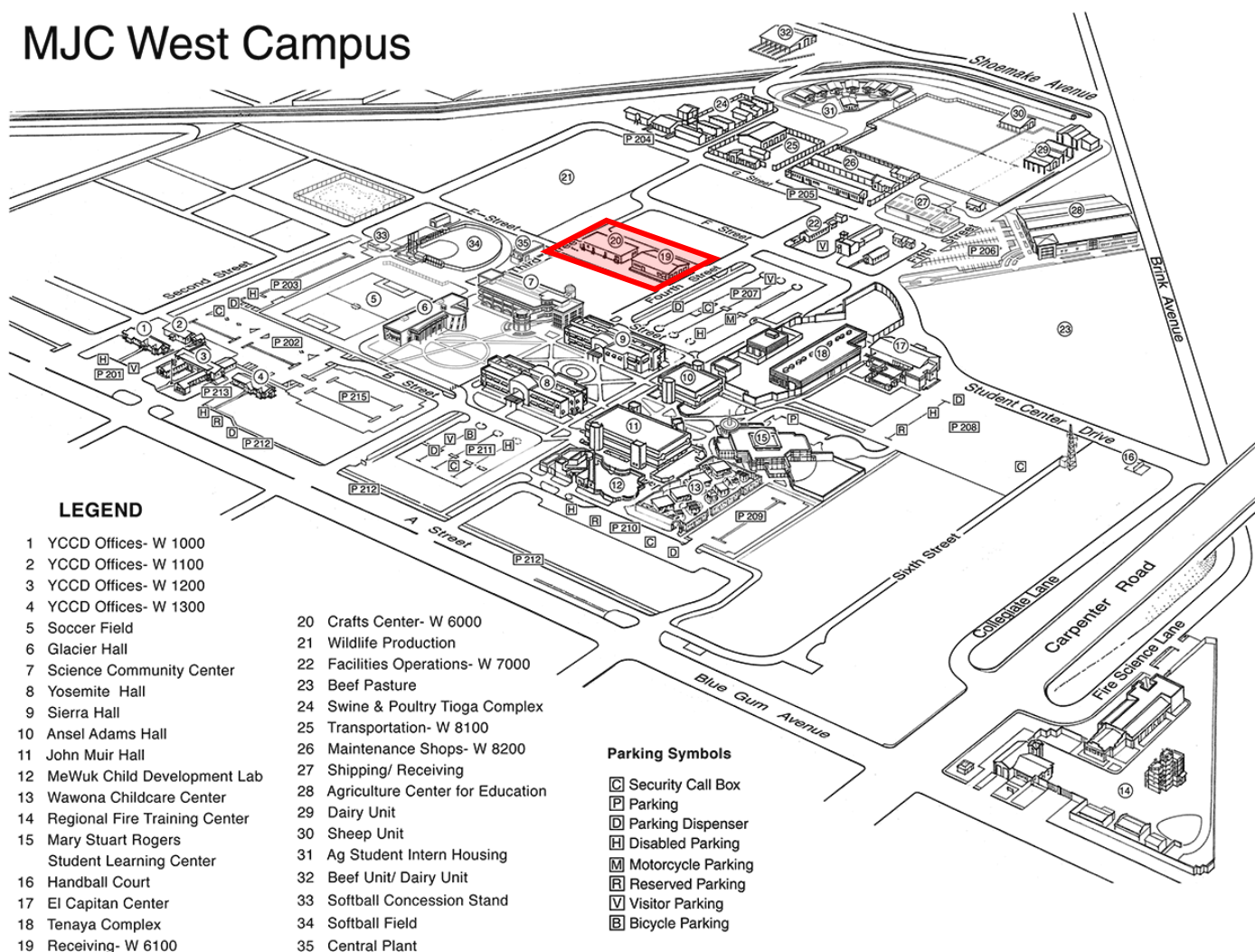
## MICL/SHIPPING & RECEIVING REMEDIATION

**Work this week:** Continued interior abatement of MICL building.

<b>Access:</b>	Caution at 3 <sup>rd</sup> and E Street.
<b>Noise:</b>	Low: Demolition
<b>Parking:</b>	No parking around allowed around both buildings.
<b>Utilities:</b>	None
<b>Odors:</b>	None
<b>Dust:</b>	None



## MJC West Campus

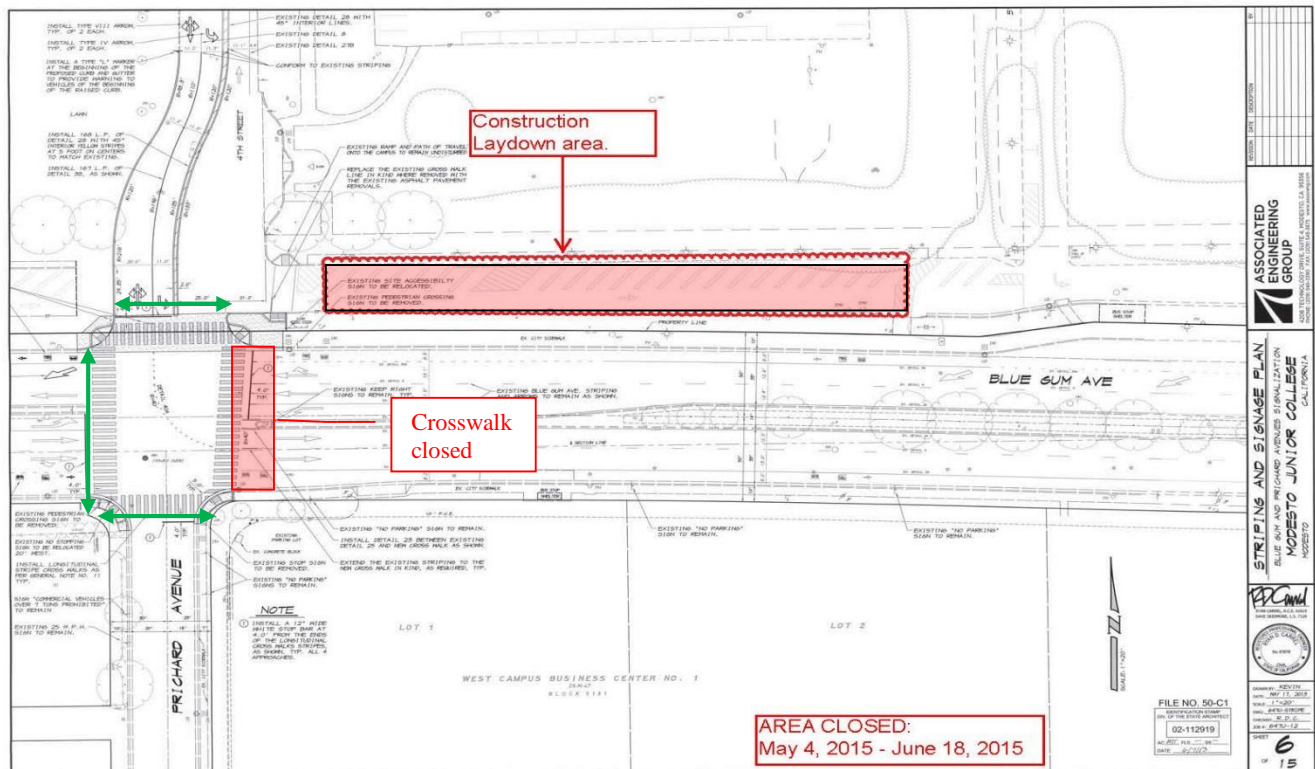




## BLUE GUM AVE & PRICHARD AVE SIGNALIZATION

**Work this week:** Continued demolition of ramps at intersection. Start pour back of concrete ramps.

<b>Access:</b>	Caution at Blue Gum Ave. and 4 <sup>th</sup> Street Intersection. Partial closure at 4 <sup>th</sup> street campus entrance. Const. workers will be directing traffic.
<b>Noise:</b>	Low: Demolition
<b>Parking:</b>	Parking closed along frontage road, east of 4 <sup>th</sup> street entrance. See map.
<b>Utilities:</b>	None
<b>Odors:</b>	None



	Construction fencing, Restricted access
	Street closed for the duration of the project

If there are any questions or concerns contact Kitchell CEM, Measure E Bond Construction Manager, located at 2201 Blue Gum Ave., Modesto CA 95358 Tel: 575-6991 Email [mkenney@kitchell.com](mailto:mkenney@kitchell.com)

