



# Measure E Bond Program MODESTO JUNIOR COLLEGE CAMPUS CONSTRUCTION UPDATE



## UPDATES & ACTIVITIES THAT MAY IMPACT CAMPUS OPERATION

*Week of December 13, 2010*

### AGRICULTURE MULTIPURPOSE PAVILION

**Work this week:** North and South wing metal framing. Framing walls to roof line, installation of roof drains, equipment bases & roof hatch at mechanical wells. MEP rough in. Insulate and sheet rock above 10 ft at South wing.

<b>Access:</b>	Caution at Student Center Dr. and G St.
<b>Noise:</b>	Low to Moderate
<b>Parking:</b>	No Impact
<b>Utilities:</b>	No
<b>Odors:</b>	No
<b>Dust:</b>	Minimal



### ALLIED HEALTH BUILDING

**Work this week:** Frame interior metal stud walls, install curtain wall, start plastering exterior walls and soffits and continue rough-in MEP systems.

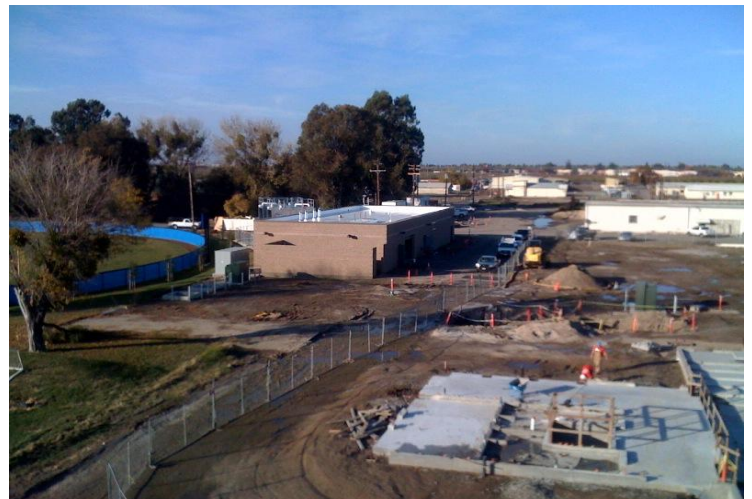
<b>Access:</b>	Caution advised at Southeast site entrance
<b>Noise:</b>	Moderate, heavy equipment
<b>Parking:</b>	No impact
<b>Utilities:</b>	No
<b>Odors:</b>	No
<b>Dust:</b>	Minimal



### MECHANICAL PLANT

**Work this week:** Rough-in MEP systems. grade south section of 3<sup>rd</sup> st. Impacts remain the same.

<b>Access:</b>	Prohibited at E St., Caution advised around MICL bldg.
<b>Noise:</b>	Moderate
<b>Parking:</b>	Prohibited at "Trailer Row"
<b>Utilities:</b>	No
<b>Odors:</b>	No
<b>Dust:</b>	Moderate





# Measure E Bond Program MODESTO JUNIOR COLLEGE CAMPUS CONSTRUCTION UPDATE *continued (page 2 of 3)*

## INFRASTRUCTURE INCREMENT I

**Work this week:** Pull electrical cable and install power switches south of Central Plant.

<b>Access:</b>	Caution at Student Center Dr. and 5 <sup>th</sup> St.
<b>Noise:</b>	Moderate
<b>Parking:</b>	No impact
<b>Utilities:</b>	No
<b>Odors:</b>	No
<b>Dust:</b>	Moderate



## SCIENCE COMMUNITY CENTER

**Work this week:** Prepare for steel erection activities. Offsite steel fabrication.

<b>Access:</b>	No anticipated impact
<b>Noise:</b>	No anticipated impact
<b>Parking:</b>	No anticipated impact
<b>Utilities:</b>	No anticipated impact
<b>Odors:</b>	No anticipated impact
<b>Dust:</b>	Minimal



## NEW STUDENT SERVICES

**Work this week:** Continue installing duct work on second floor. Contractor started framing exterior walls on east end of building. Contractor started installation of first set of stairs.

<b>Access:</b>	No impact
<b>Noise:</b>	Moderate: equipment & deliveries
<b>Parking:</b>	No additional impacts
<b>Utilities:</b>	None
<b>Odors:</b>	None
<b>Dust:</b>	None





---

**Measure E Bond Program**  
**MODESTO JUNIOR COLLEGE CAMPUS**  
**CONSTRUCTION UPDATE**  
*Continued (page 3 of 3)*

---

**FOUNDERS HALL RENOVATION**

**Work this week:** Sheet rock and metal stud framing and mechanical electrical plumbing.

<b>Access:</b>	No
<b>Noise:</b>	Moderate: concrete trucks
<b>Parking:</b>	No additional impacts
<b>Utilities:</b>	None
<b>Odors:</b>	None
<b>Dust:</b>	Minimal



---

If there are any questions or concerns contact Kitchell CEM, Measure E Bond Construction Manager, located at 2201 Blue Gum Ave., Rm #1301, Modesto CA 95358 Tel: 575-6991 Email [tmillman@kitchell.com](mailto:tmillman@kitchell.com)

