

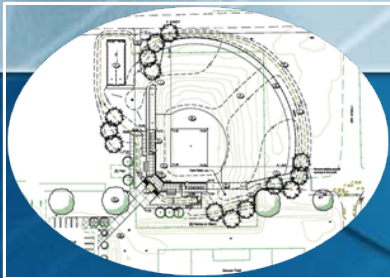
YOSEMITE COMMUNITY COLLEGE DISTRICT

Measure E Bond Program



Modesto Junior College STUDENT SERVICES BUILDING

May 2009





MODESTO JUNIOR COLLEGE EAST CAMPUS Project Description

The new Student Services Project will consolidate the existing Student Services programs spread throughout East Campus and allow for some growth in these programs within two main components: the renovation of the First Floor of the existing Morris Memorial Building and a new 2-story building.

The New Building project site is located northeast of the heart of campus, defined by a landscaped quad and main pedestrian circulation routes, and north of the Morris Memorial Building. The District and the Campus want the new Student Services Building to be the missing front door to the East Campus, and to include a One Stop Shop approach to student services. The steel-frame building with its central lobby and landscaped exterior courtyard will be welcoming, contemporary and clearly identifiable as a landmark building, but also be harmonious with the existing campus fabric.



MODESTO JUNIOR COLLEGE EAST CAMPUS Measure E Projects



EAST CAMPUS MEASURE E PROJECTS

MODESTO JUNIOR COLLEGE
Yosemite Community College District

APRIL 02, 09



STUDENT SERVICES BUILDING





MODESTO JUNIOR COLLEGE EAST CAMPUS Project Site Plan



Only six trees were removed to make room for the new building

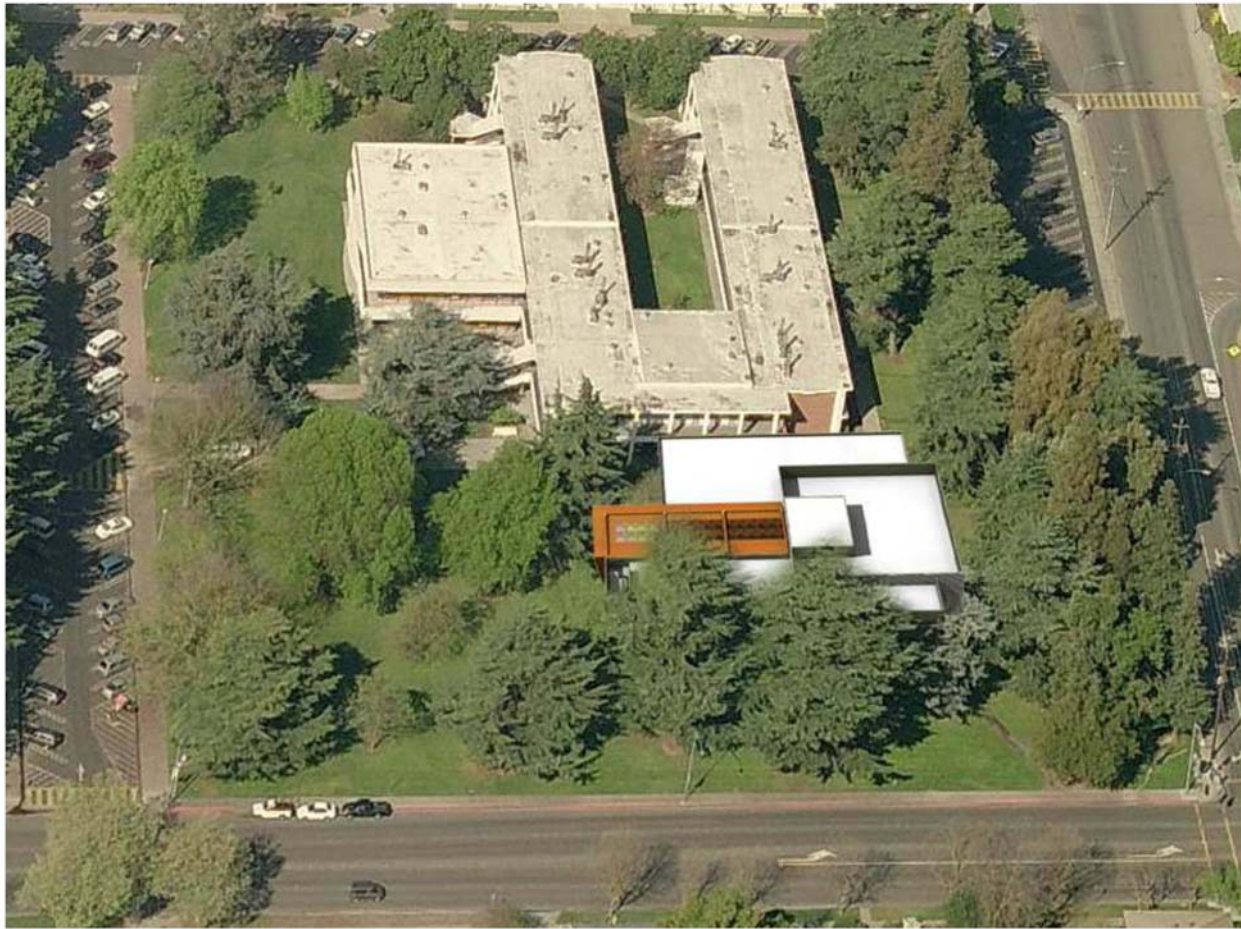


STUDENT SERVICES BUILDING





MODESTO JUNIOR COLLEGE EAST CAMPUS Artist Conception



STUDENT SERVICES BUILDING

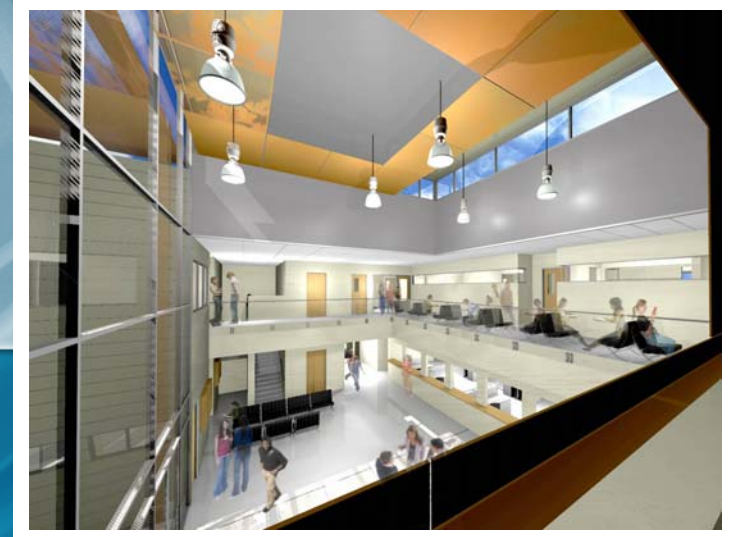




MODESTO JUNIOR COLLEGE EAST CAMPUS Artist Renderings



Original Design





A Value Engineering (VE) Session was held on March 31, 2009. The project was analyzed and the session resulted in a savings of \$ 881,500

At the VE session it was determined that the building design incorporated so many "green technology" features that the building could be LEED Silver Certified for an additional \$100,000 in commissioning costs



The savings were generated without reducing program space or function of the new building. The changes were mostly cosmetic

Architect's rendering of exterior after the Value Engineering modifications



MODESTO JUNIOR COLLEGE EAST CAMPUS

QUESTIONS AND ANSWERS



STUDENT SERVICES BUILDING

