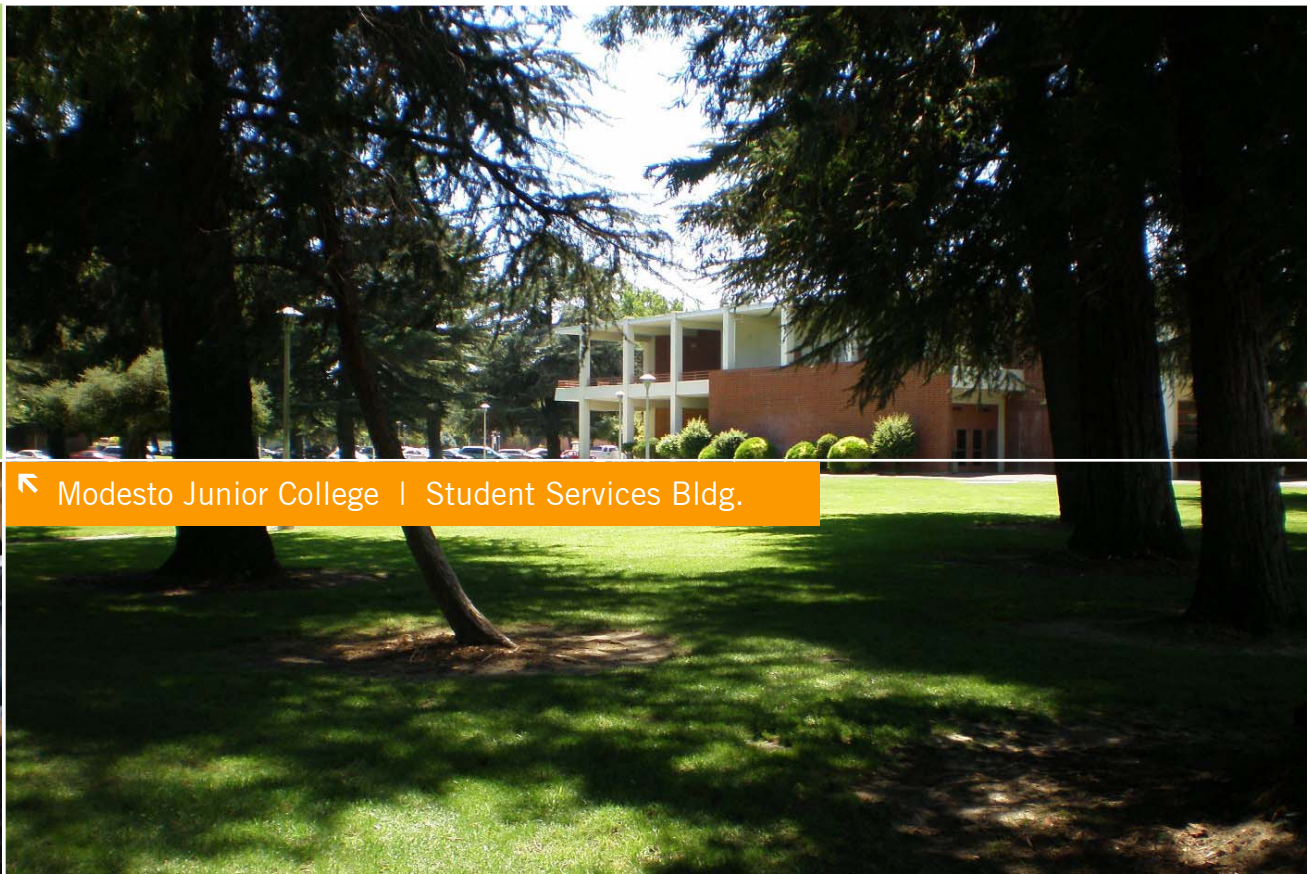


PERKINS  
+ WILL



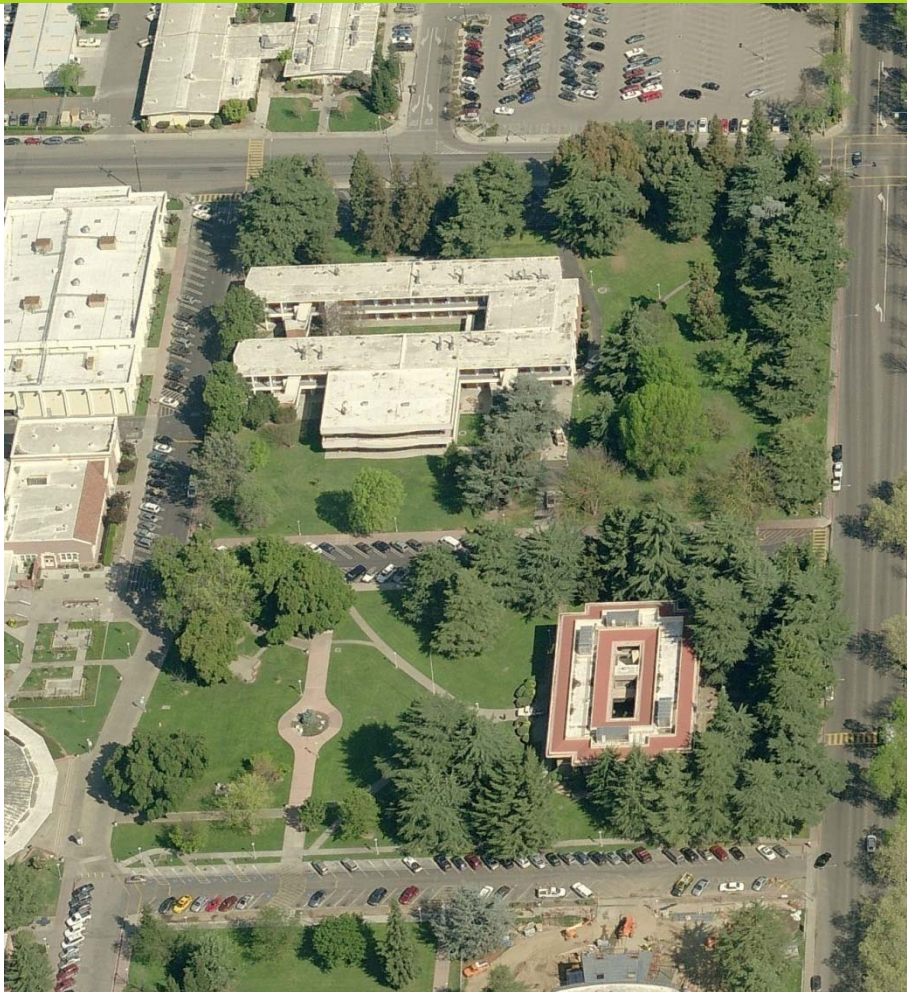
Ideas + buildings  
that honor the broader  
goals of society



← Modesto Junior College | Student Services Bldg.

75% Design Development – February 3, 2009

# Meeting Agenda



## Location

West Campus, Mary Stuart Rogers Student Learning Center, Room 116

## Agenda

- 11:30 Executive Committee Meeting: Preview
  - Matt Kennedy, Marie Otaya, Bob Nadell, Tim Nesmith
  - Leigh Christy, Brian Knight, James Kerrigan, Michael Hendron
- 12:00 Student Services Design Development Meeting
  - Executive Committee & All User Groups (Deans / Department Heads)
- 12:00 Project Review
  - Introductions & Schedule
  - Morris Building Summary
  - Review New Building Design Revisions
    - Site & Plan
- 12:30 Finish Materials
  - Exterior Palette Proposal
  - Interior Palette Choices
- 1:15 Design Questions
  - Bullpen Scenarios
  - Interior Vision Lights (walls & doors)
  - Acoustical Considerations
  - Built-in Cabinetry
  - Special Wall Covering Surfaces
  - Special Lighting
- 3:15 Decisions, Summary & Next Steps
- 3:30 Executive Committee Meeting: Summary
  - Matt Kennedy, Marie Otaya, Bob Nadell, Tim Nesmith
  - Leigh Christy, Brian Knight, James Kerrigan, Michael Hendron

# Alternate Programming Option



(Courtesy of Dr. Bob Nadell!)

# 1st Floor Morris Building

## LEGEND

- SHARED PROGRAM
- STUDENT SUCCESS / SSS(TRIO) / SPECIAL PROJECTS / TUTORING
- HEALTH SERVICES
- MAILROOM / FACILITIES



# 1<sup>st</sup> Floor Morris Building



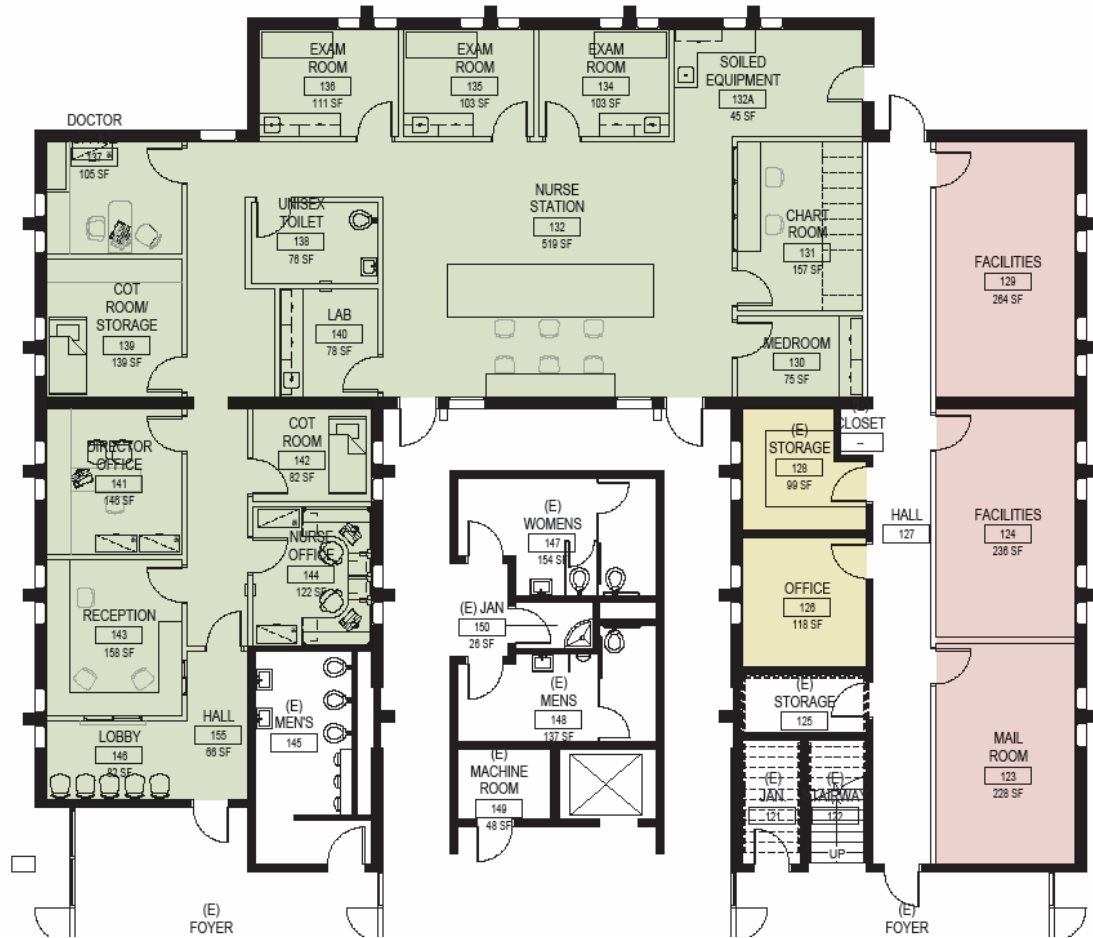
**LEGEND**

- SHARED PROGRAM
- STUDENT SUCCESS / SSS(TRIO) / SPECIAL PROJECTS / TUTORING
- HEALTH SERVICES
- MAILROOM / FACILITIES

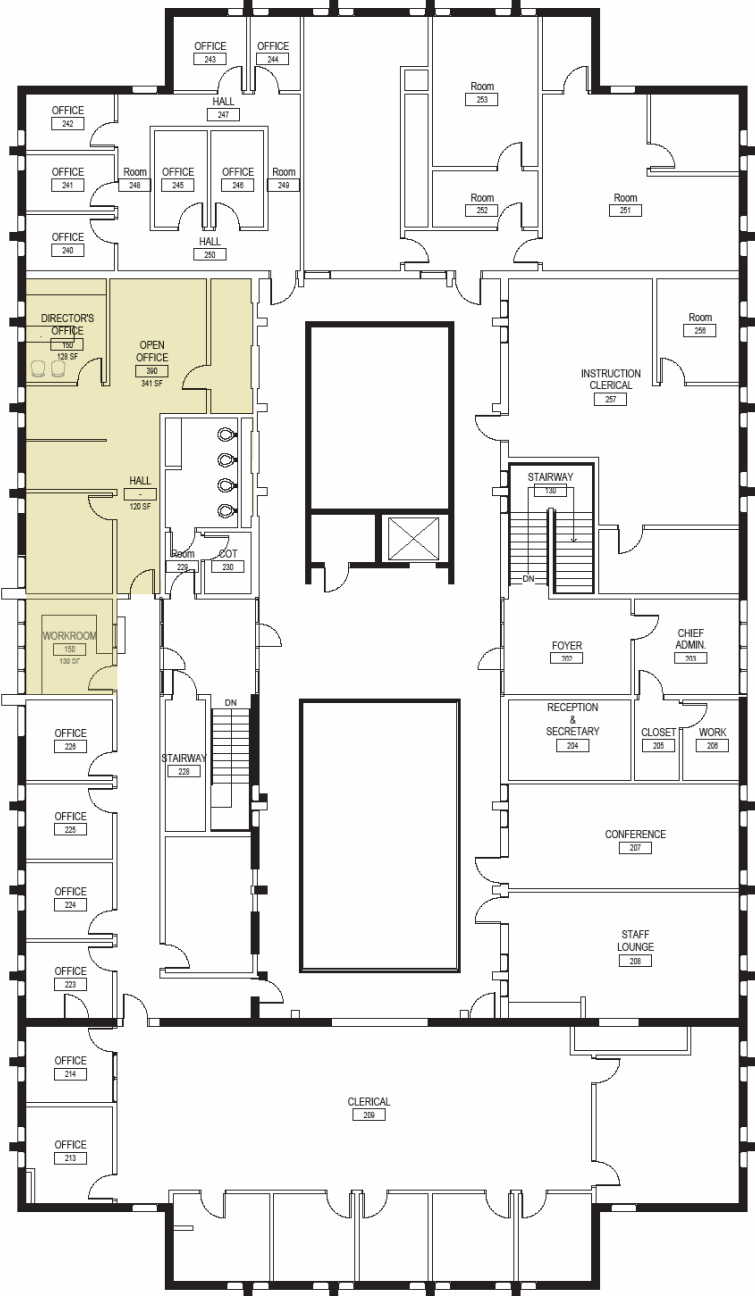
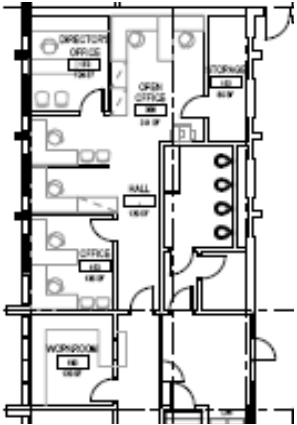
# 1<sup>st</sup> Floor Morris Building

## LEGEND

- SHARED PROGRAM
- STUDENT SUCCESS / SSS(TRIO) / SPECIAL PROJECTS / TUTORING
- HEALTH SERVICES
- MAILROOM / FACILITIES



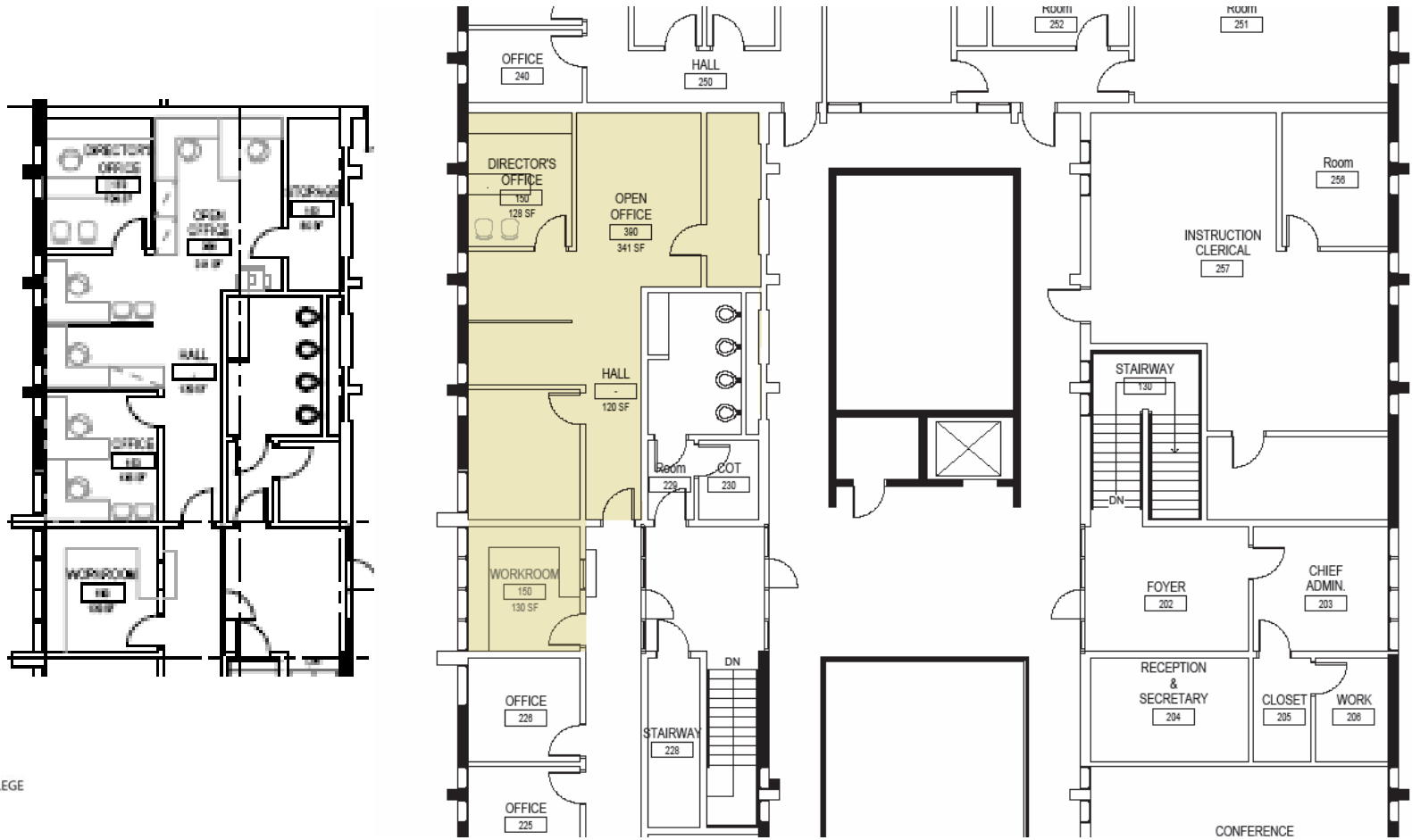
# 2<sup>nd</sup> Floor Morris Building



**LEGEND**

PRE COLLEGE

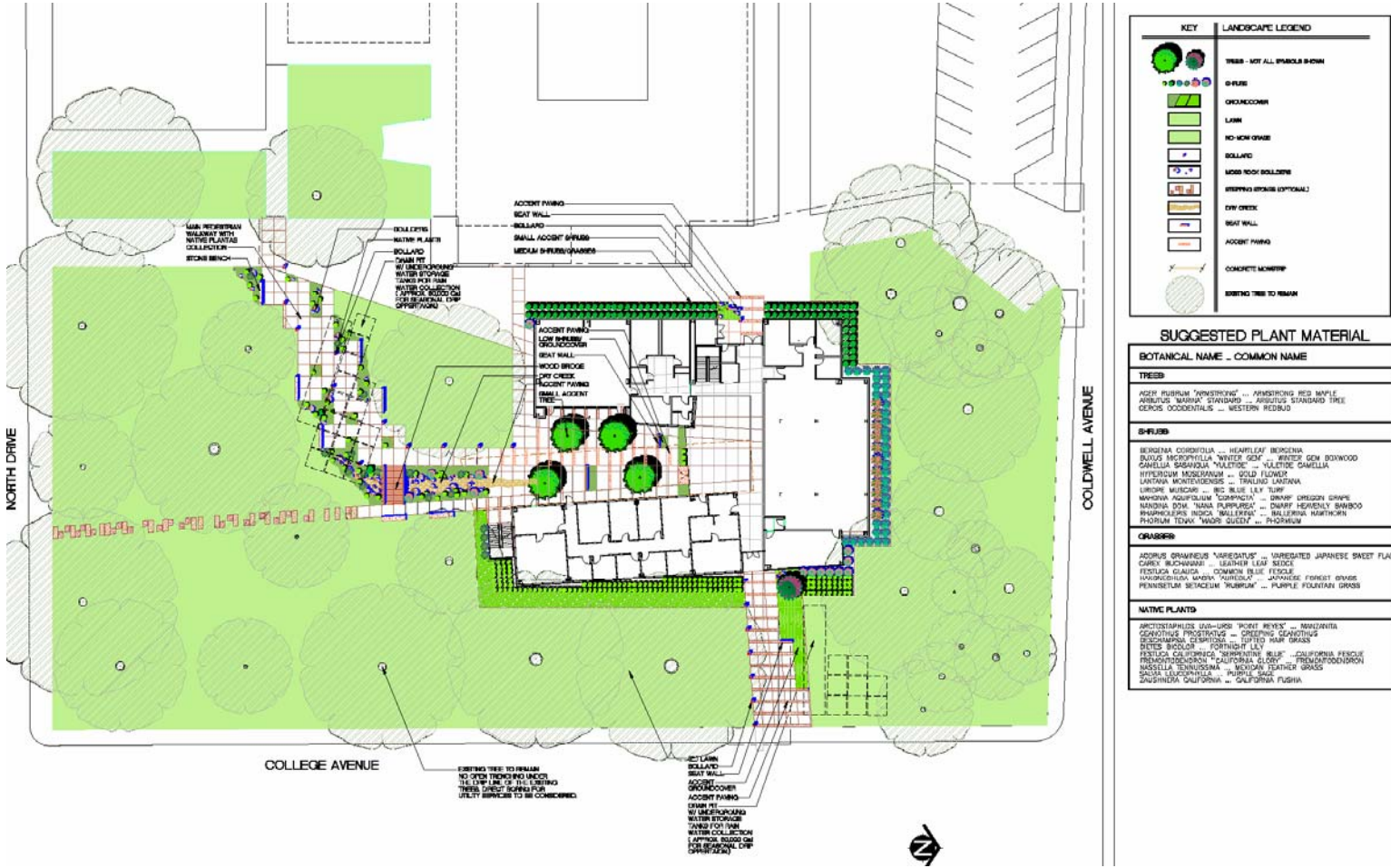
# 2<sup>nd</sup> Floor Morris Building



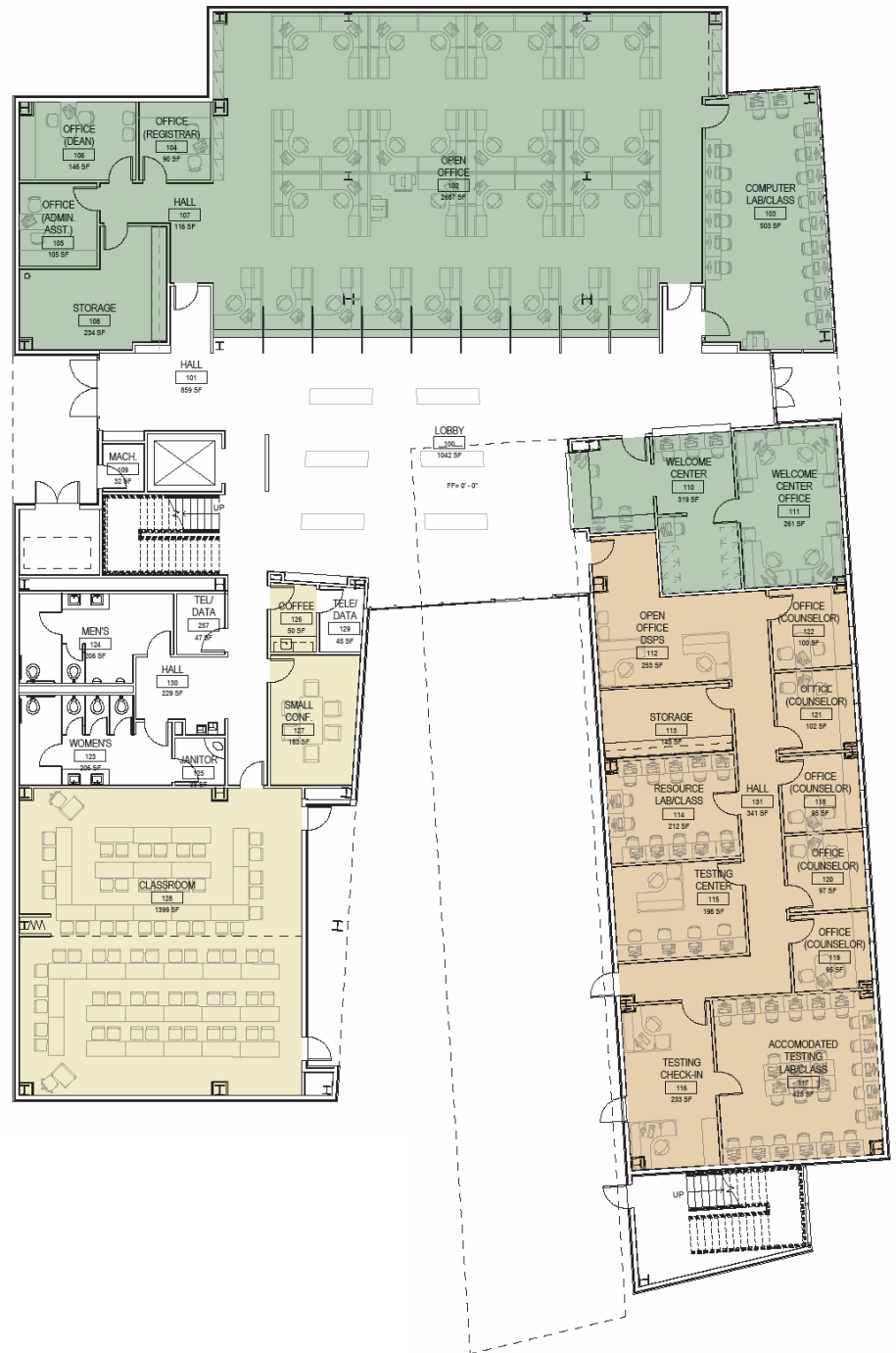
**LEGEND**  
PRE COLLEGE



# Site Plan



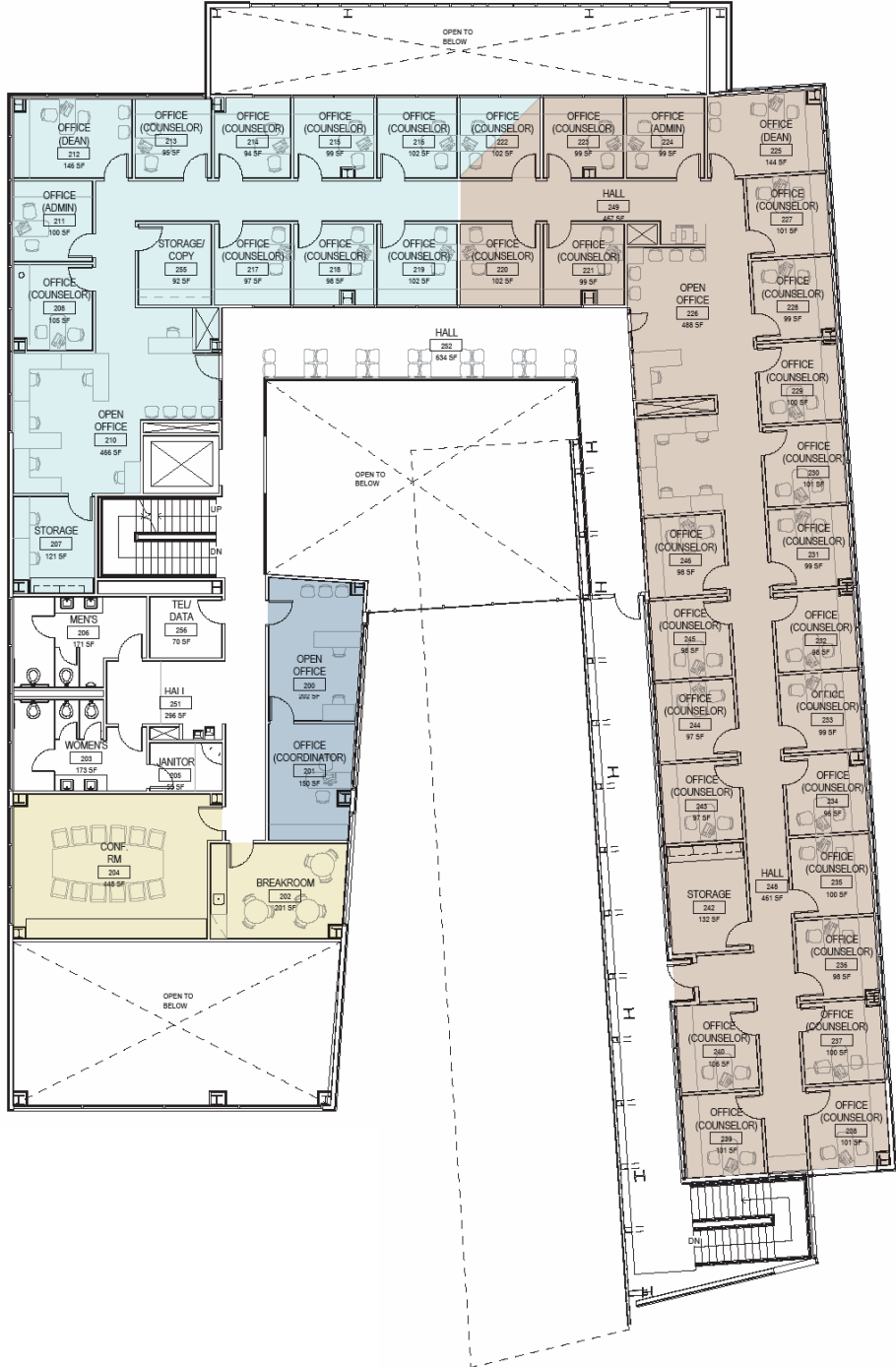
# 1st Floor Plan



## LEGEND

- ADMISSIONS/RECORDS/EVALUATION/  
FINANCIAL AID/WELCOME CENTER
- SHARED PROGRAM
- DSPS

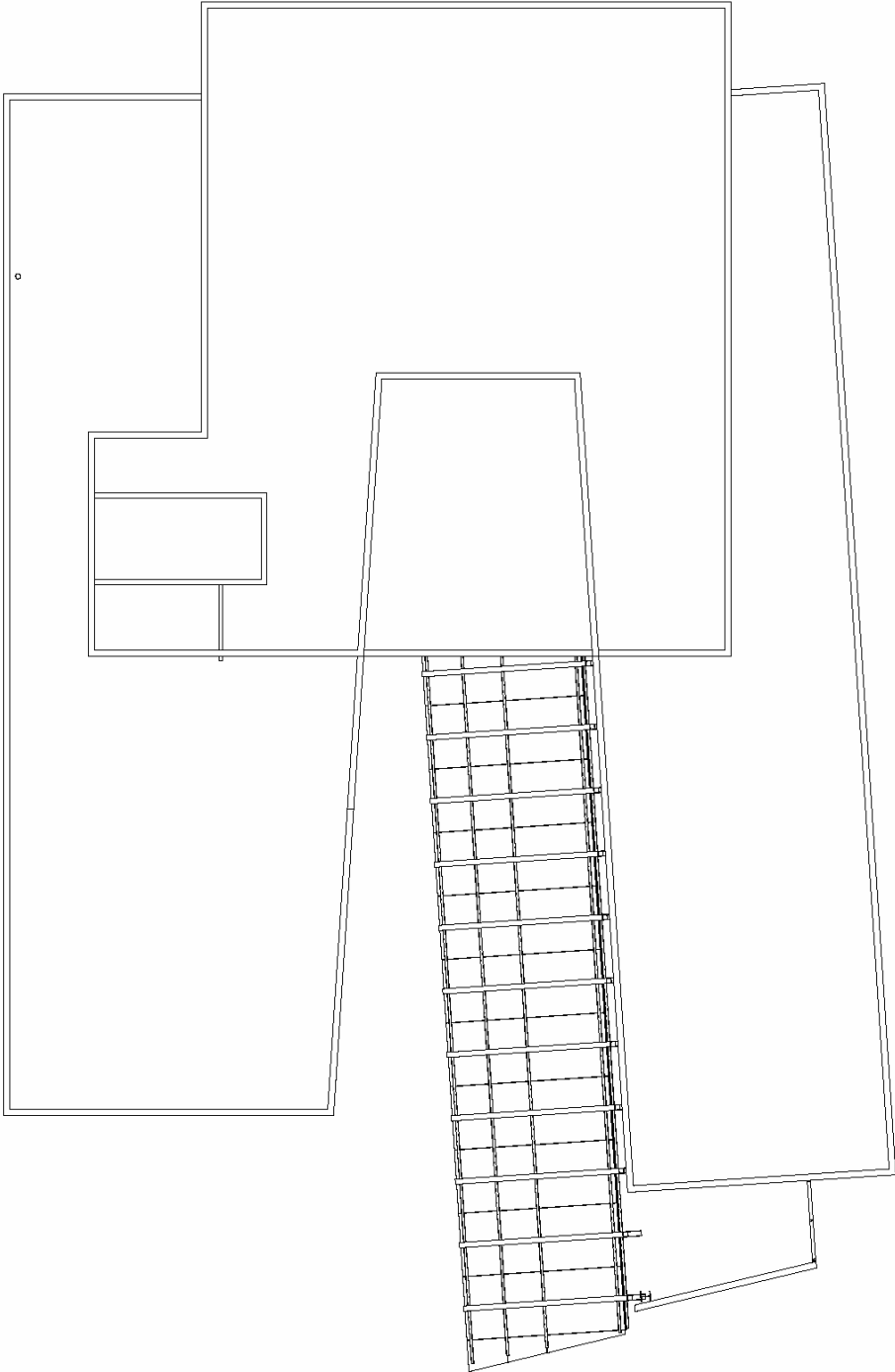
# 2<sup>nd</sup> Floor Plan



## LEGEND

- SHARED PROGRAM
- EOPS
- COUNSELING
- VETERANS

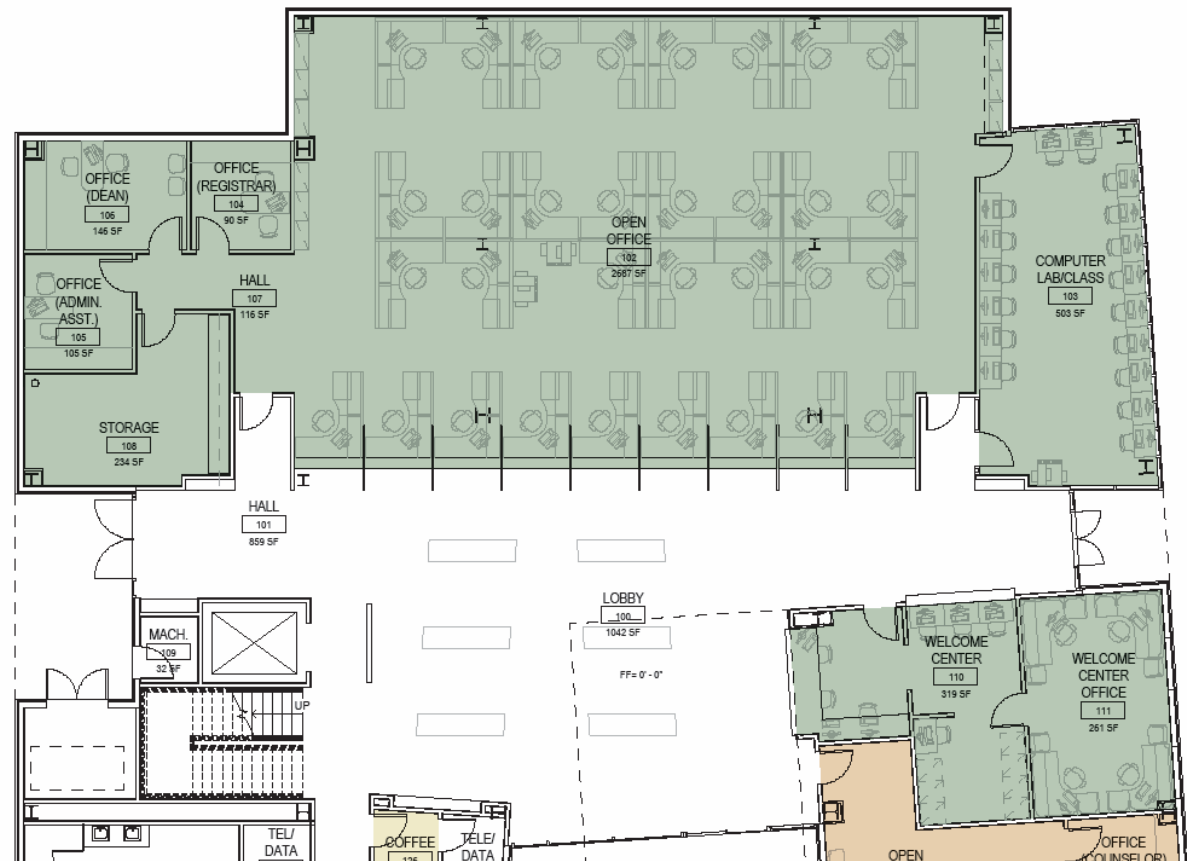
# Roof Plan



# 1st Floor Plan

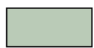


## LEGEND

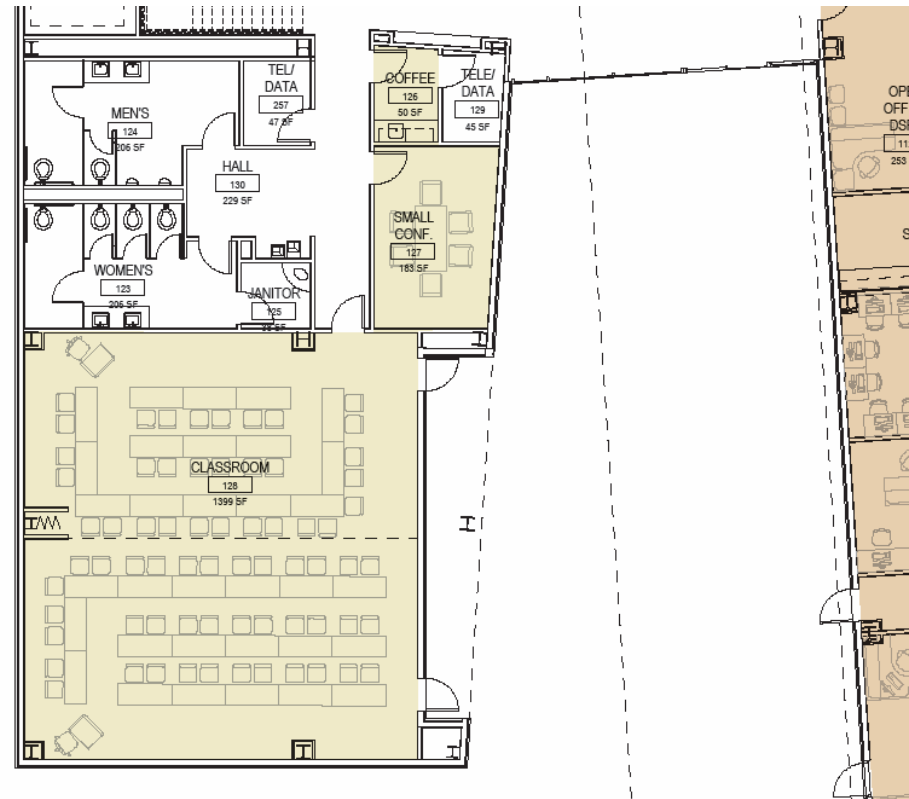
- ADMISSIONS/RECORDS/EVALUATION/  
FINANCIAL AID/WELCOME CENTER
- SHARED PROGRAM
- DSPS



# 1<sup>st</sup> Floor Plan

## LEGEND

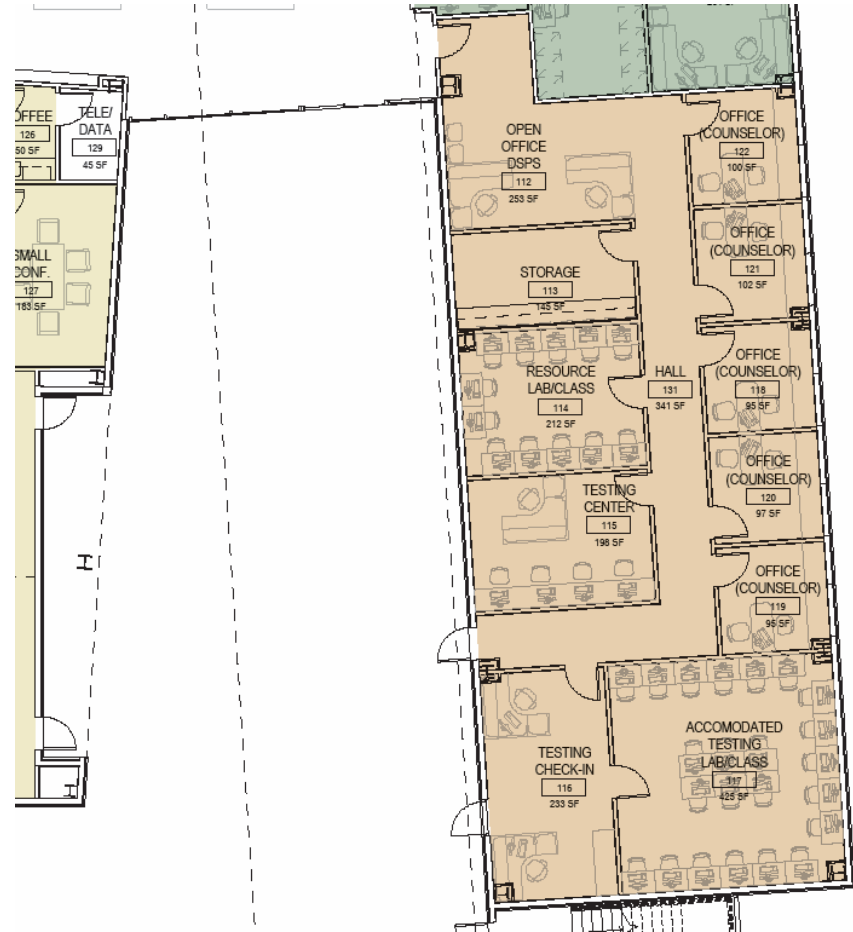
-  ADMISSIONS/RECORDS/EVALUATION/  
FINANCIAL AID/WELCOME CENTER
-  SHARED PROGRAM
-  DSPTS



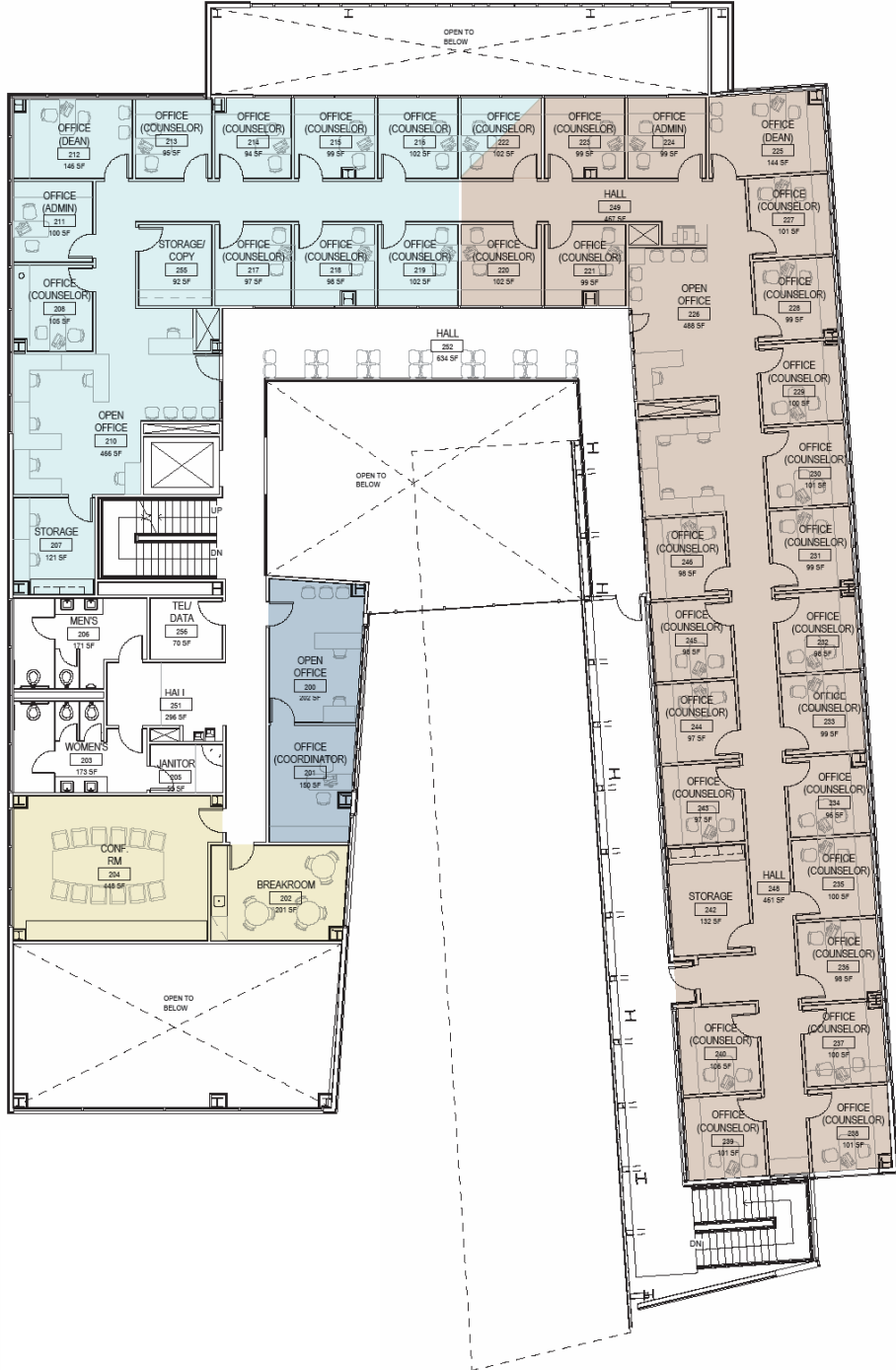
# 1st Floor Plan

## LEGEND

- ADMISSIONS/RECORDS/EVALUATION/  
FINANCIAL AID/WELCOME CENTER
- SHARED PROGRAM
- DSPS



# 2<sup>nd</sup> Floor Plan



## LEGEND

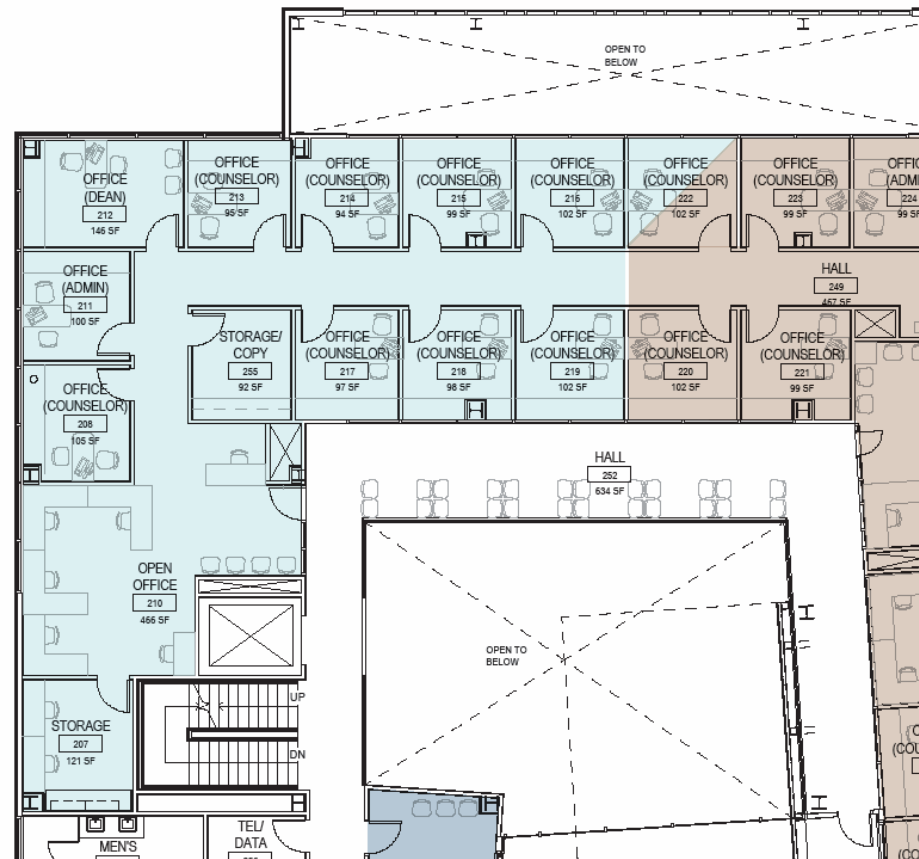
- SHARED PROGRAM
- EOPS
- COUNSELING
- VETERANS



# 2<sup>nd</sup> Floor Plan

## LEGEND

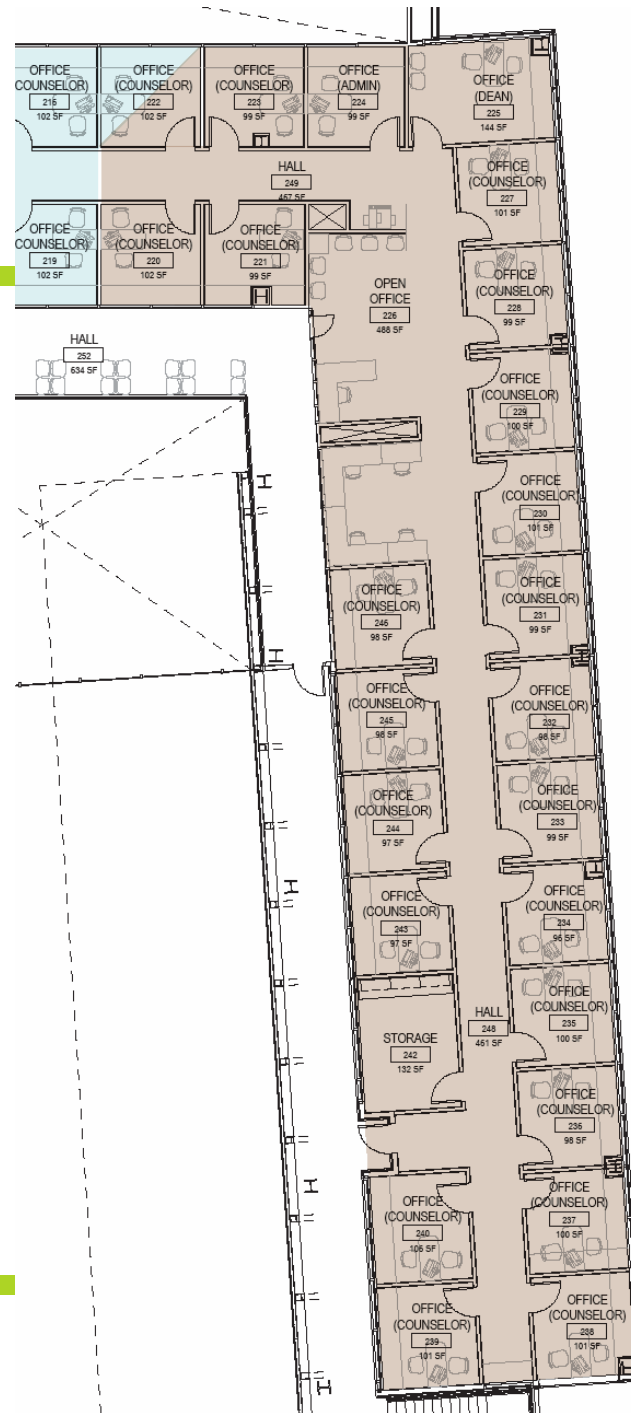
- SHARED PROGRAM
- EOPS
- COUNSELING
- VETERANS



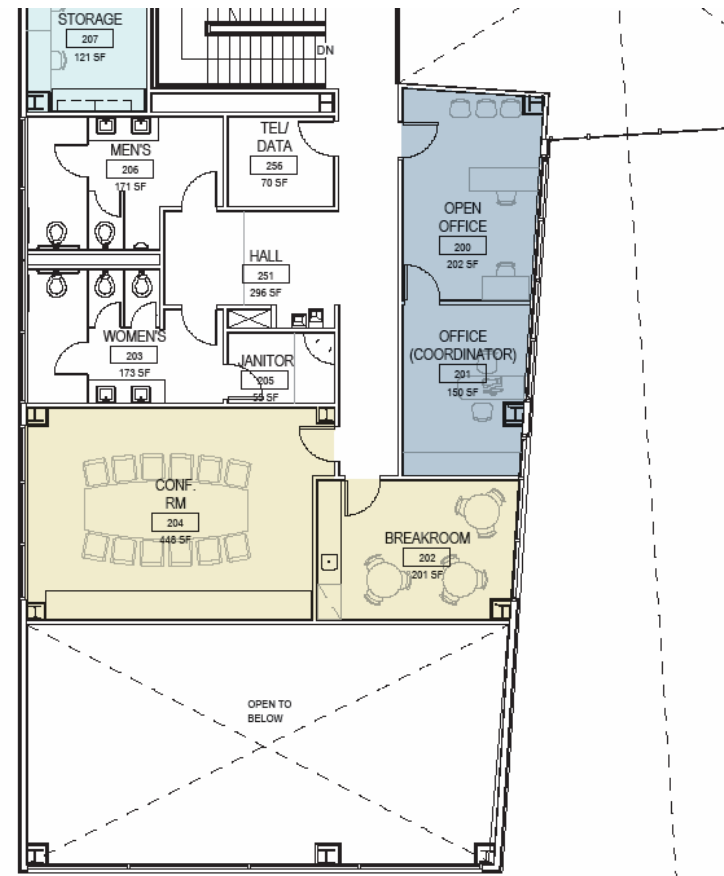
# 2<sup>nd</sup> Floor Plan

## LEGEND

- SHARED PROGRAM
- EOPS
- COUNSELING
- VETERANS



# 2<sup>nd</sup> Floor Plan



## LEGEND

- SHARED PROGRAM
- EOPS
- COUNSELING
- VETERANS

# Modesto Junior College Student Services Building



# Modesto Junior College Student Services Building



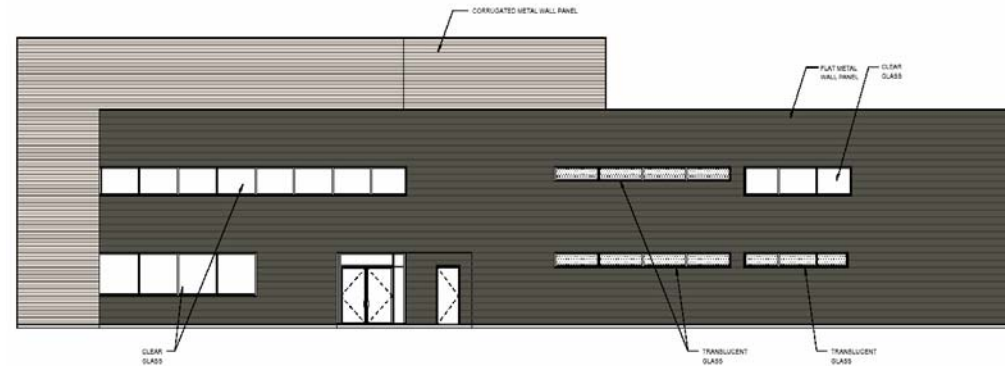
# Modesto Junior College Student Services Building



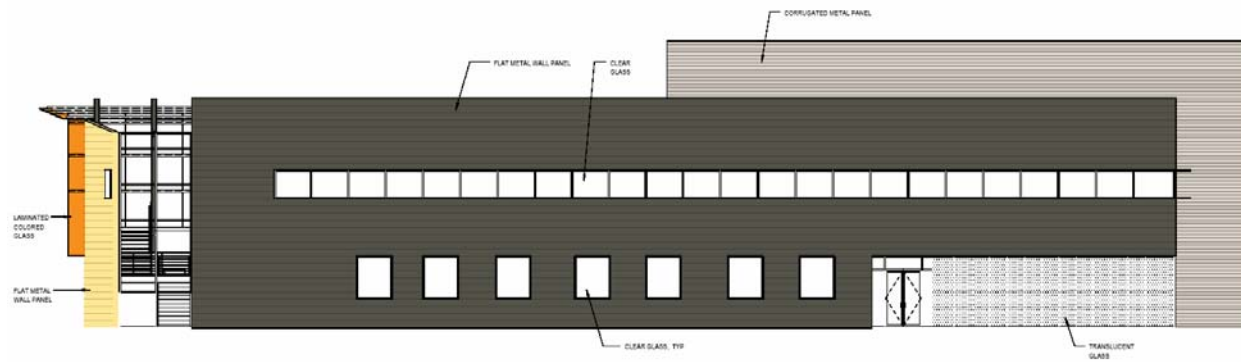
# Modesto Junior College Student Services Building



# Finishes – Exterior Elevations



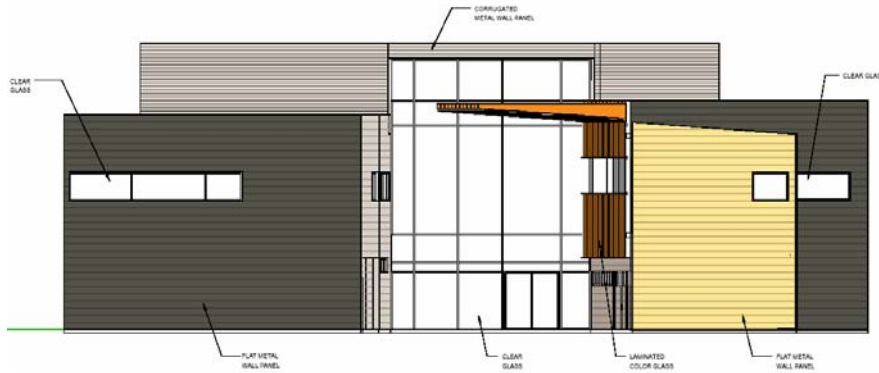
WEST ELEVATION



EAST ELEVATION



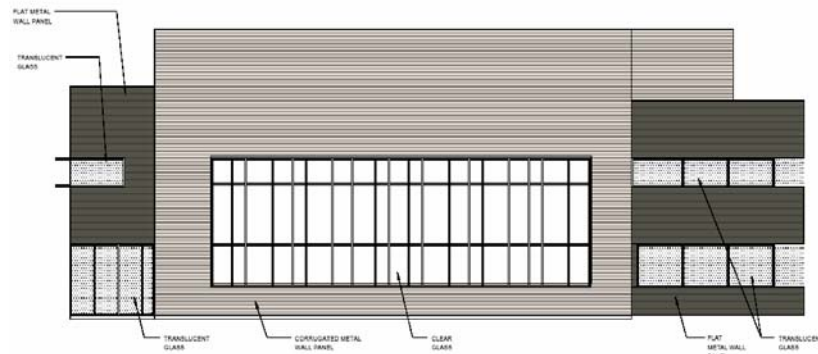
# Finishes – Exterior Elevations



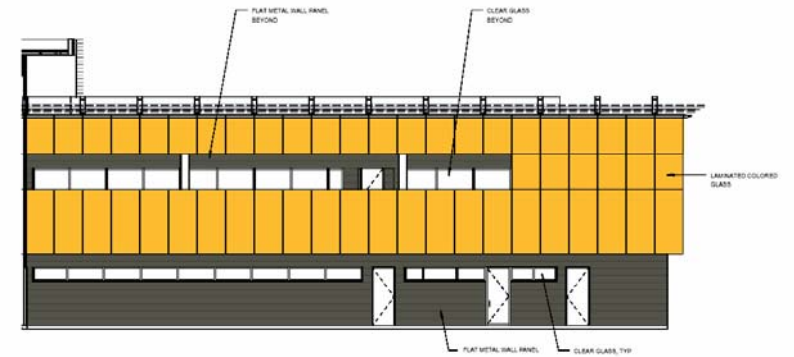
SOUTH ELEVATION



PARTIAL EAST ELEVATION

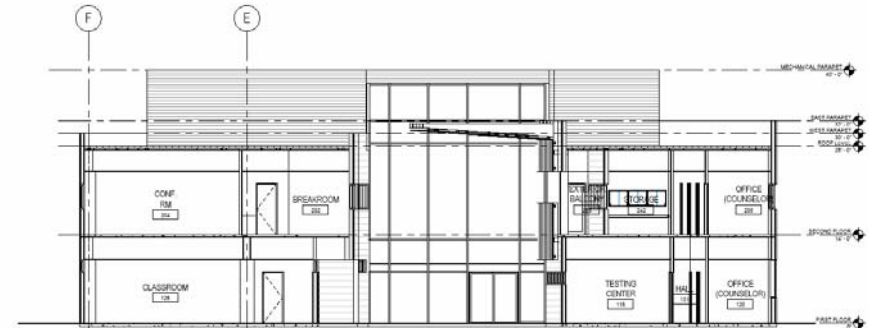
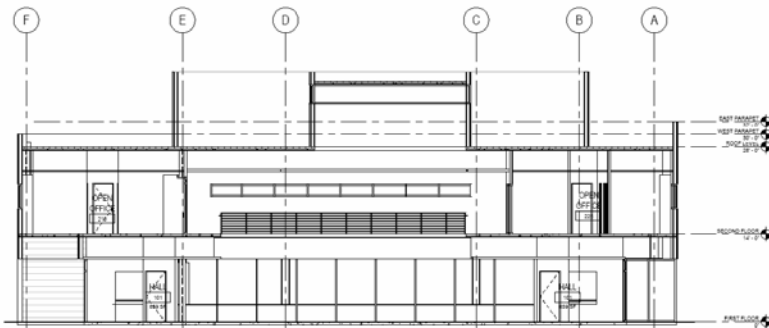
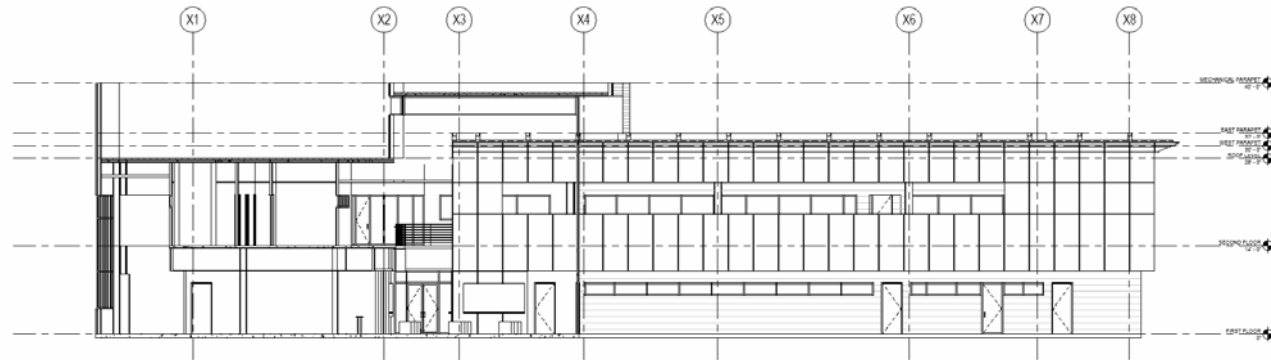


NORTH ELEVATION

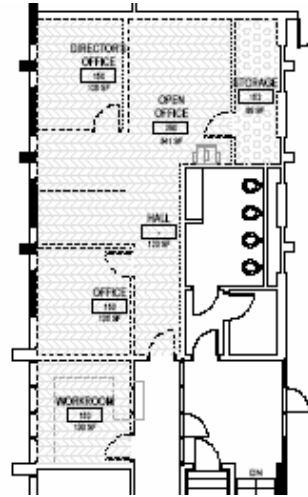


PARTIAL WEST ELEVATION

# Finishes – Building Sections




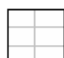


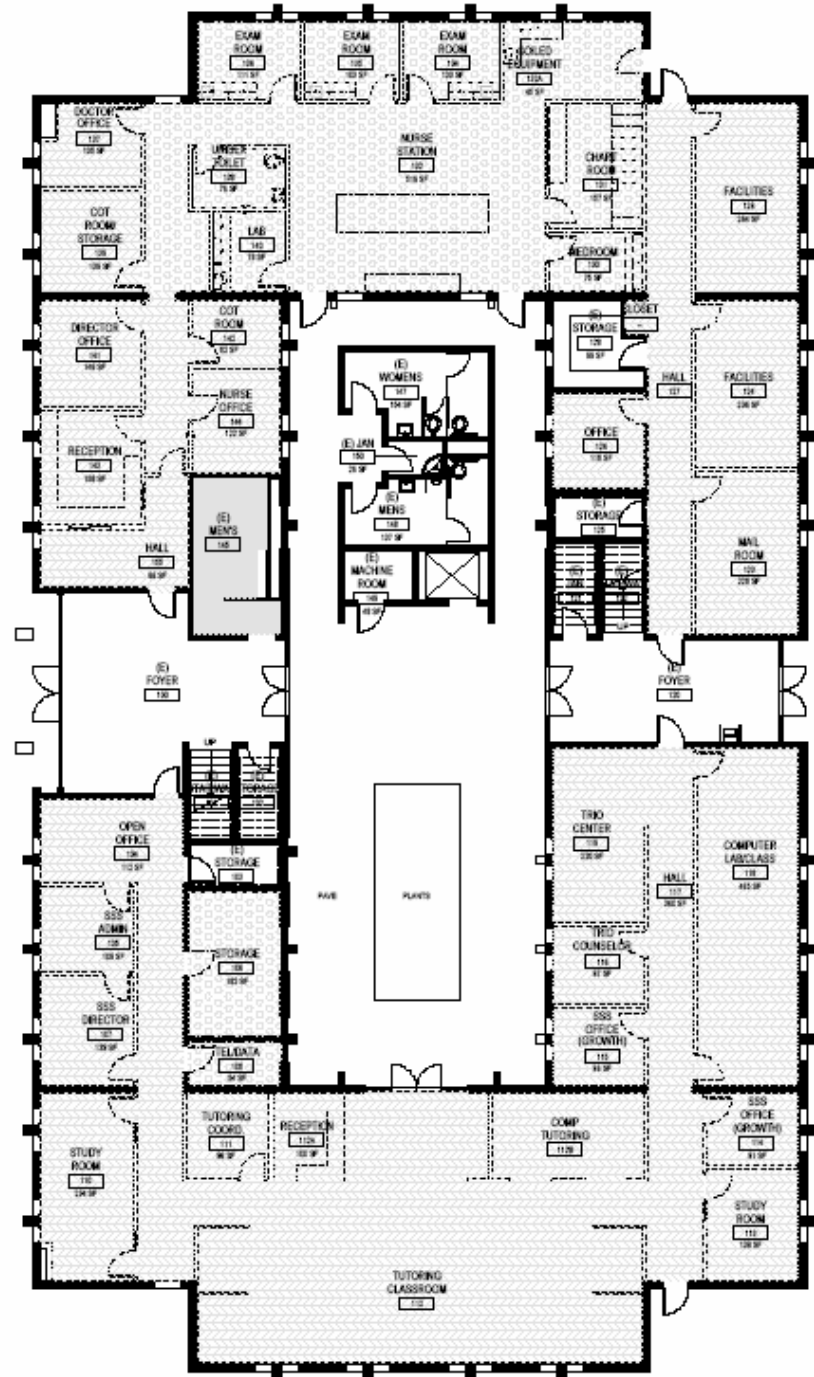
# Finishes – Morris Building



2<sup>nd</sup> Floor

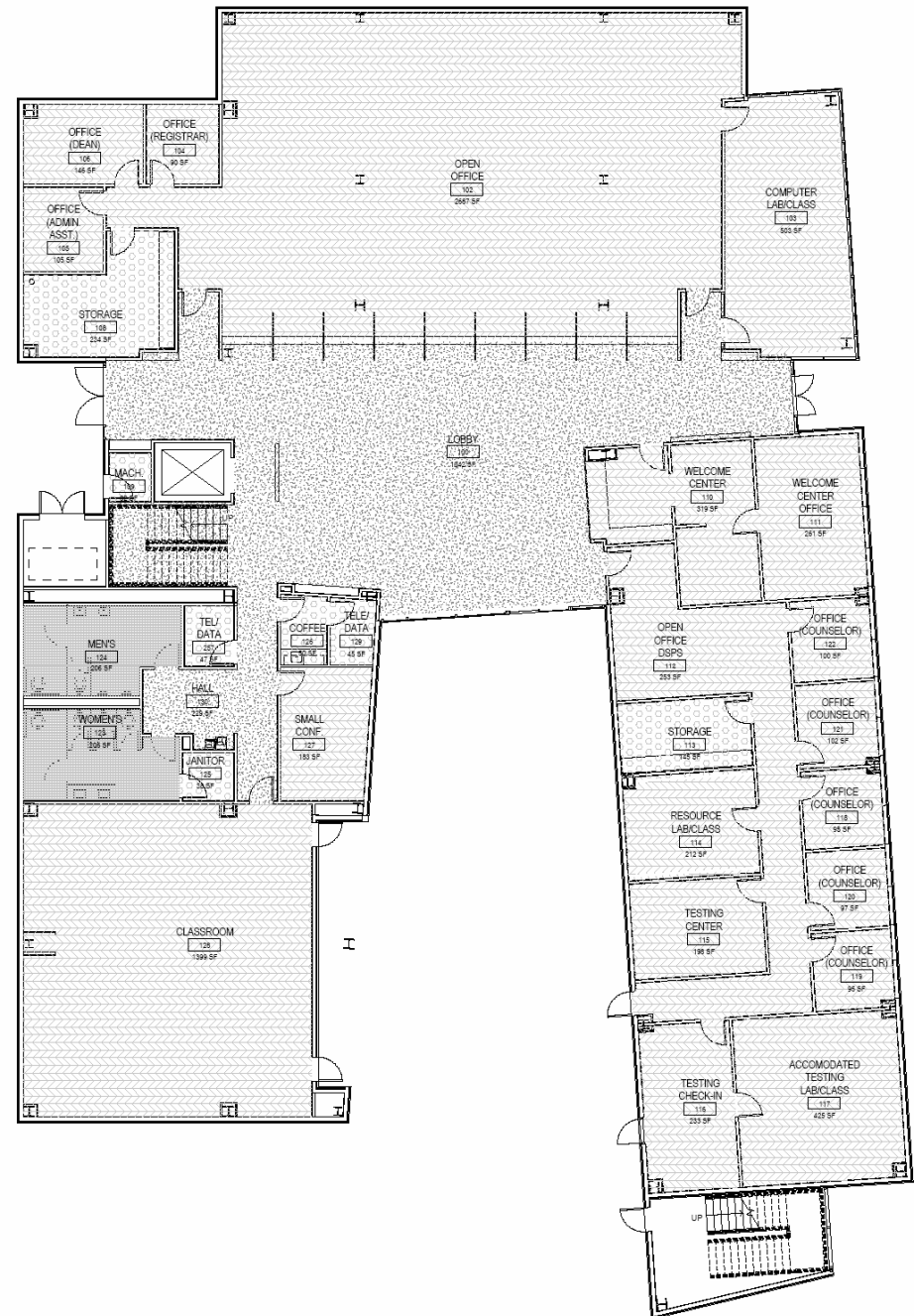
## Legend

	RF-1 LINOLEUM		CPT-1 CARPET
	RF-4 COLORED CONCRETE		CT-1 CERAMIC TILE




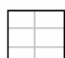


1<sup>st</sup> Floor

# Finishes – New Building

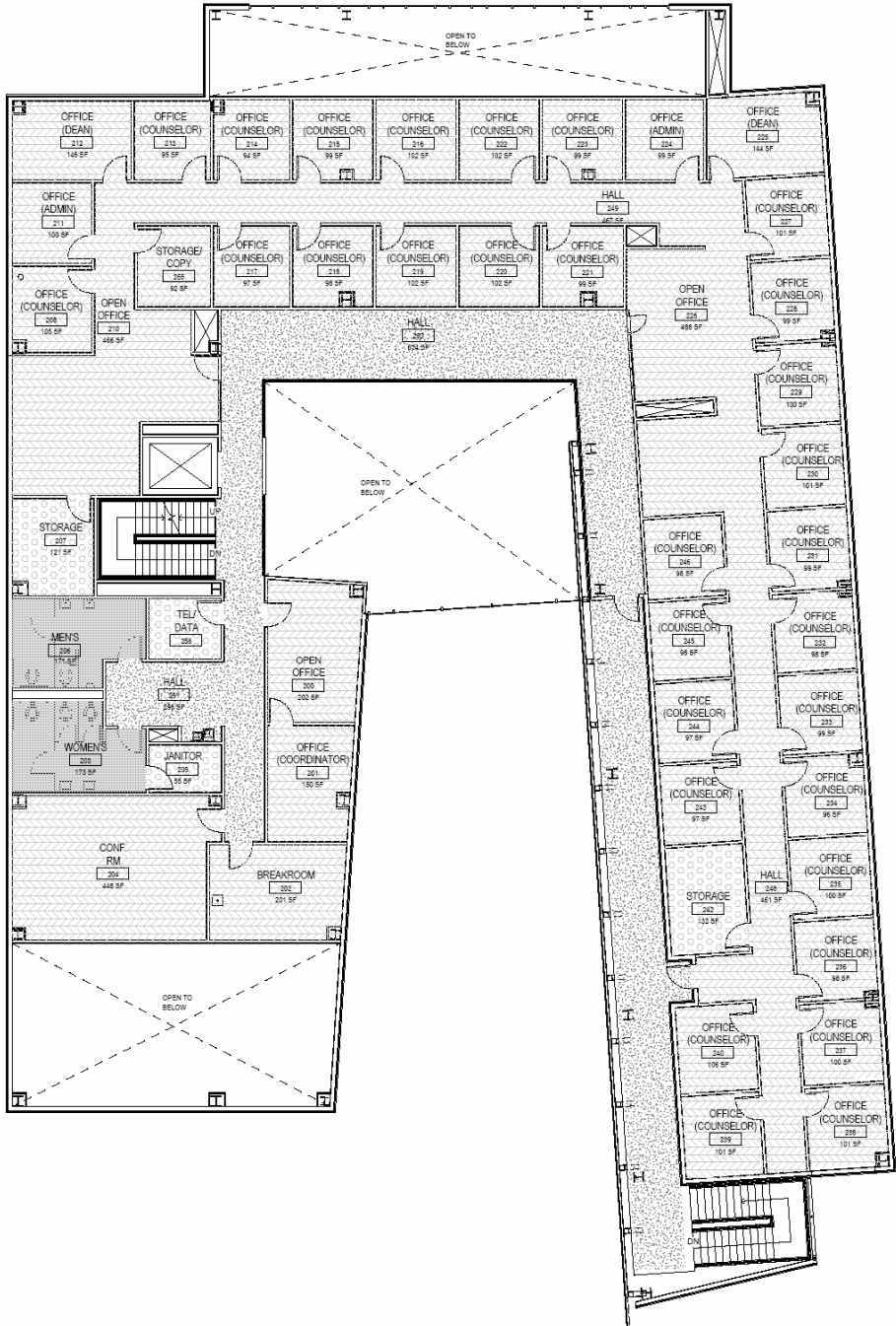


## Legend





	RF-1 LINOLEUM		CPT-1 CARPET
	RF-4 COLORED CONCRETE		CT-1 CERAMIC TILE

1<sup>st</sup> Floor

# Finishes – New Building



### Legend

- 
RF-1  
LINOLEUM
- 
CPT-1  
CARPET
- 
RF-4  
COLORED  
CONCRETE
- 
CT-1  
CERAMIC TILE

2<sup>nd</sup> Floor

# Bullpen Scenarios – Feedback

## Key Functions

- Central Location
- Provide Direction
- Distribute Information
- Waiting & Queuing for Services
- Providing Services

## Key Issues

- Visibility of Welcome Center
- Demarcation of Bullpen & Administrative Area
- Security of Spaces adjacent to Bullpen After Hours
- Waiting, Queuing & Wayfinding
- Relative Privacy of Student-Advisor Interactions
- Acoustics: Noise Level, Privacy & Reverberation



# Bullpen Scenarios – Case Studies



**Foothill College**  
Los Altos Hills, California

# Bullpen Scenarios – Case Studies



**Mt. San Antonio College**  
Walnut, California

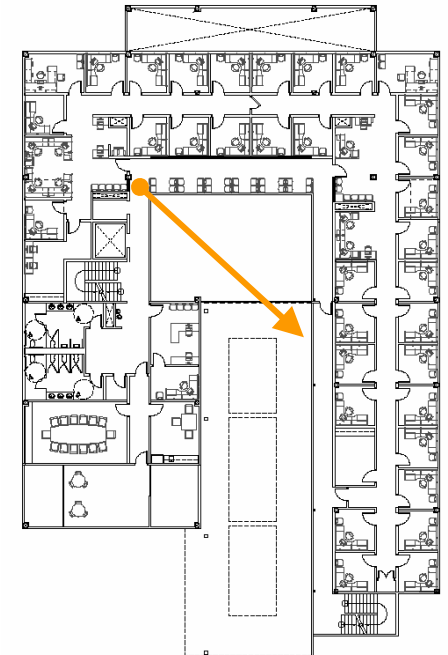


# Bullpen Scenarios – Case Studies

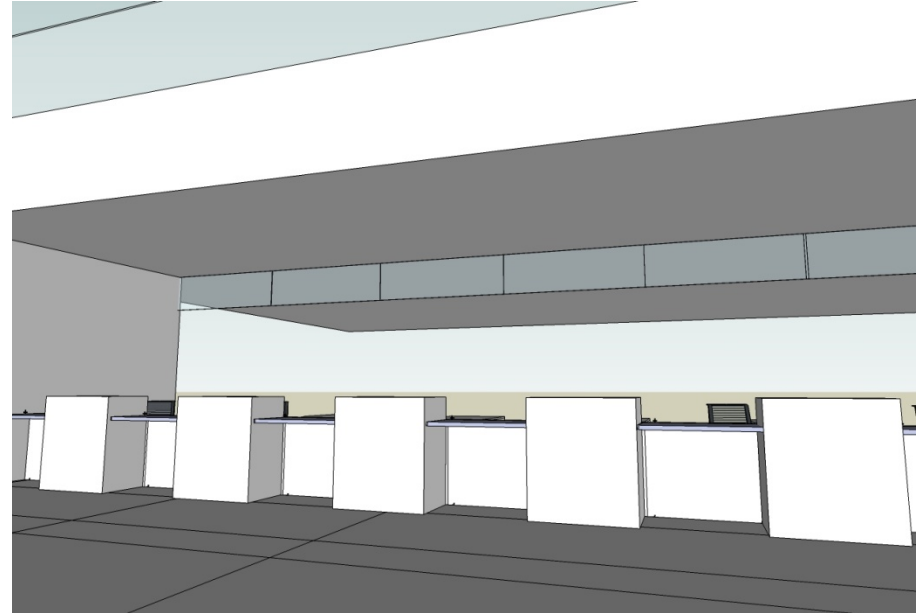
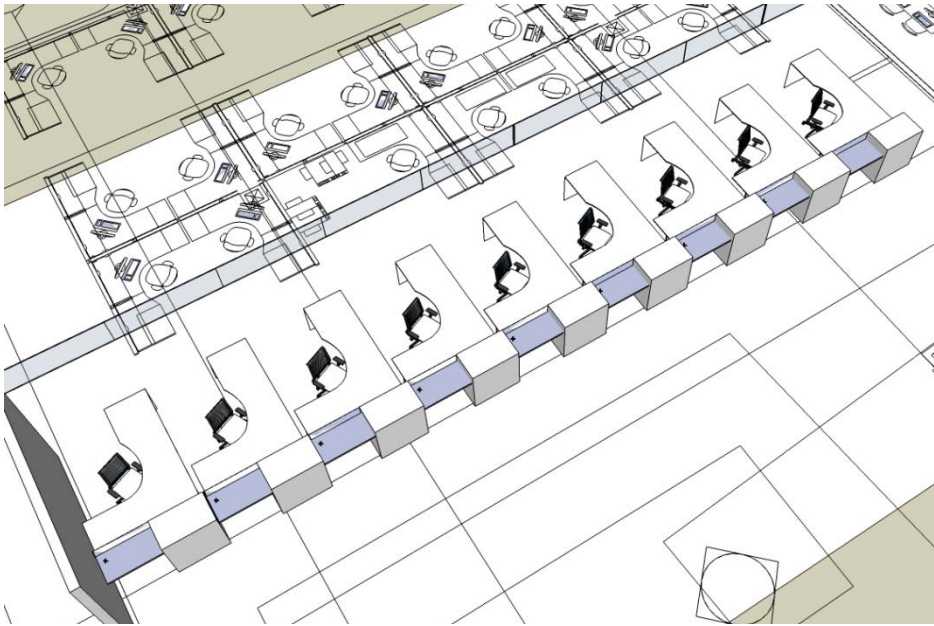


**Mt. San Antonio College**  
Walnut, California

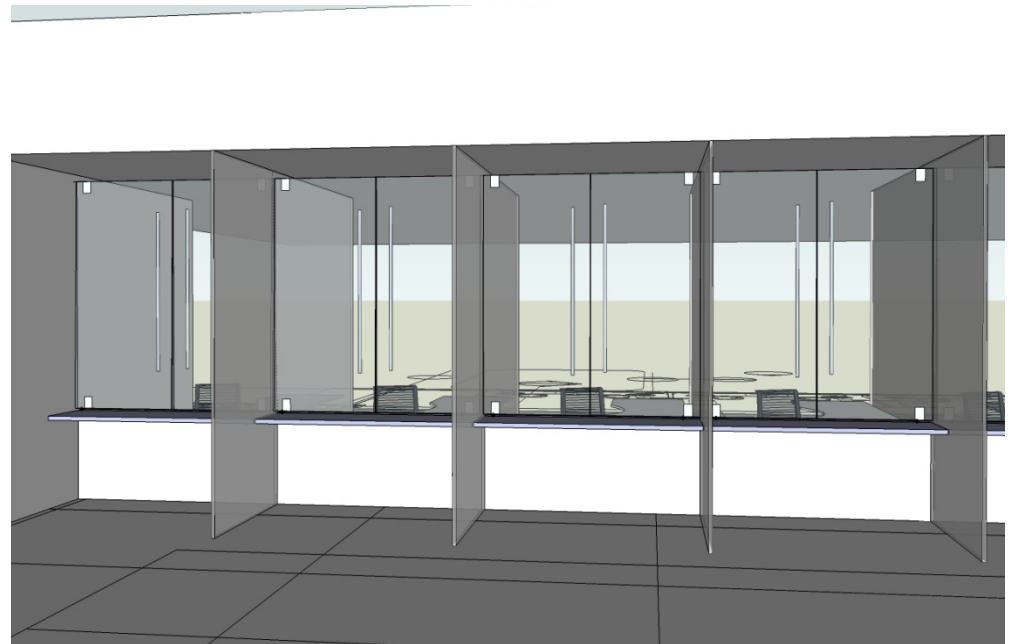
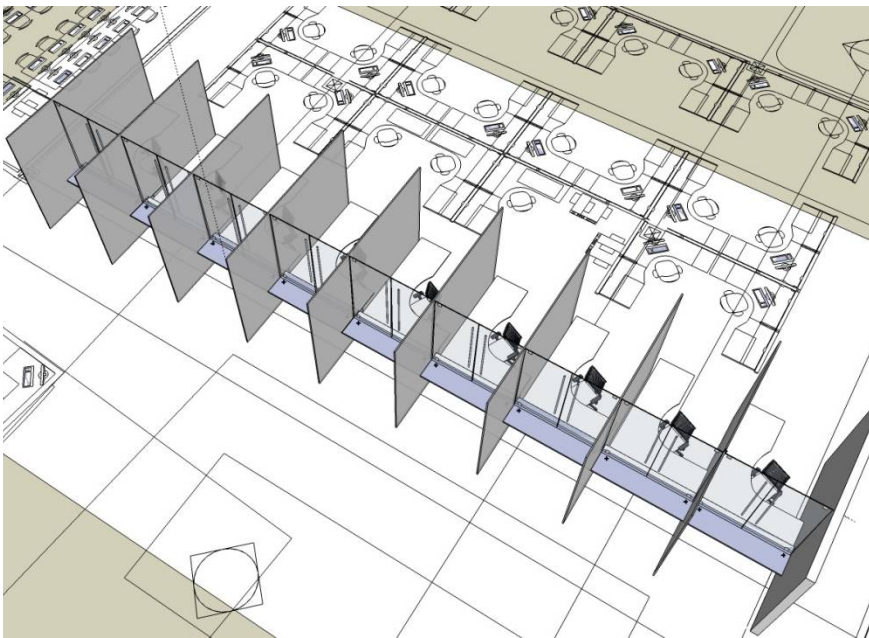
# Bullpen Scenarios



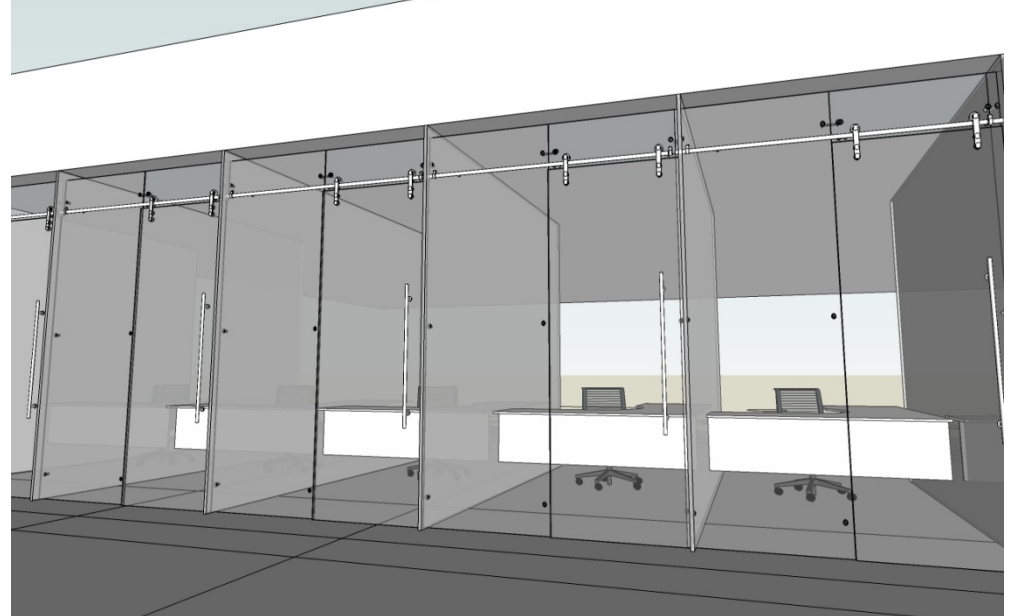
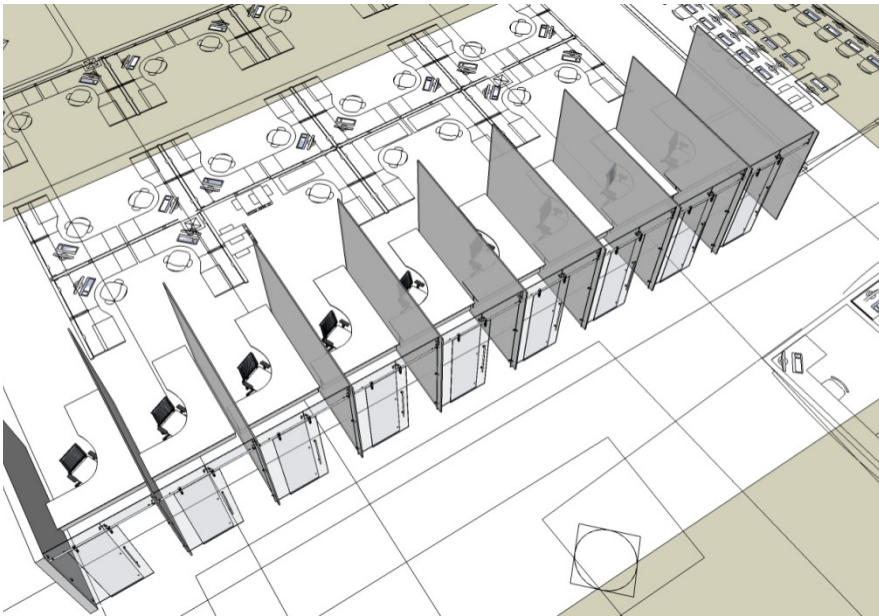
# Bullpen Scenarios – Advisor Stations Option 1



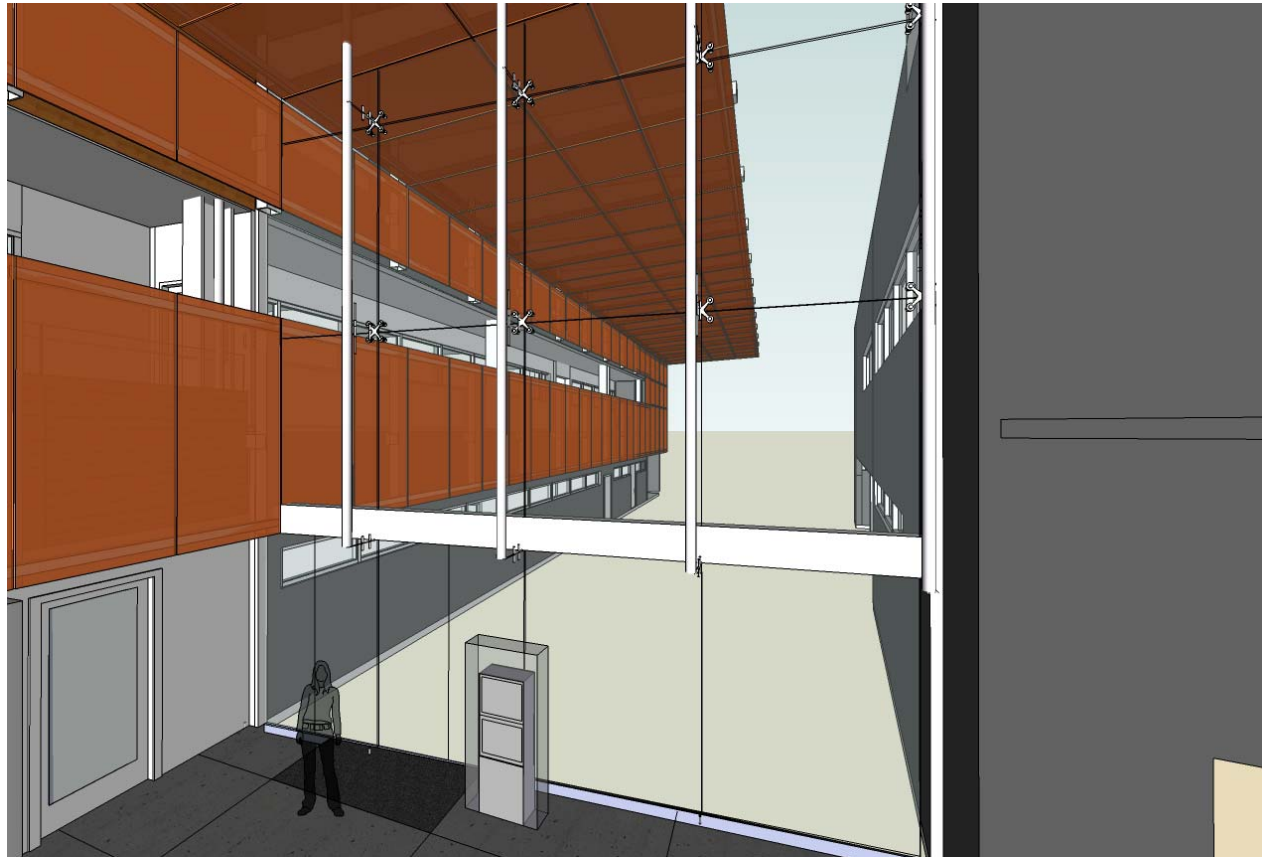
## Bullpen Scenarios – Advisor Stations Option 2



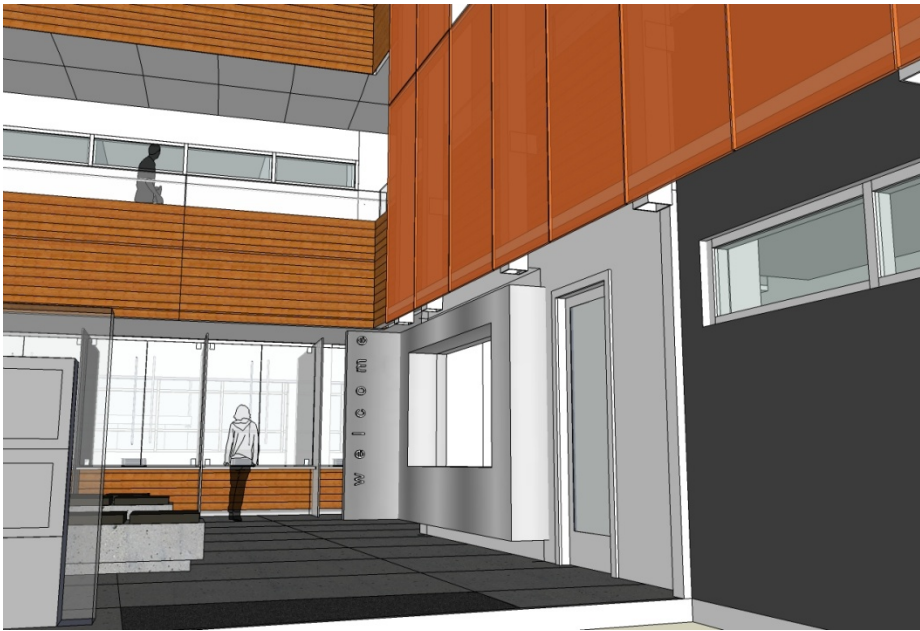
# Bullpen Scenarios – Advisor Stations Option 3



# Bullpen Scenarios – Directory



# Bullpen Scenarios – Welcome Center

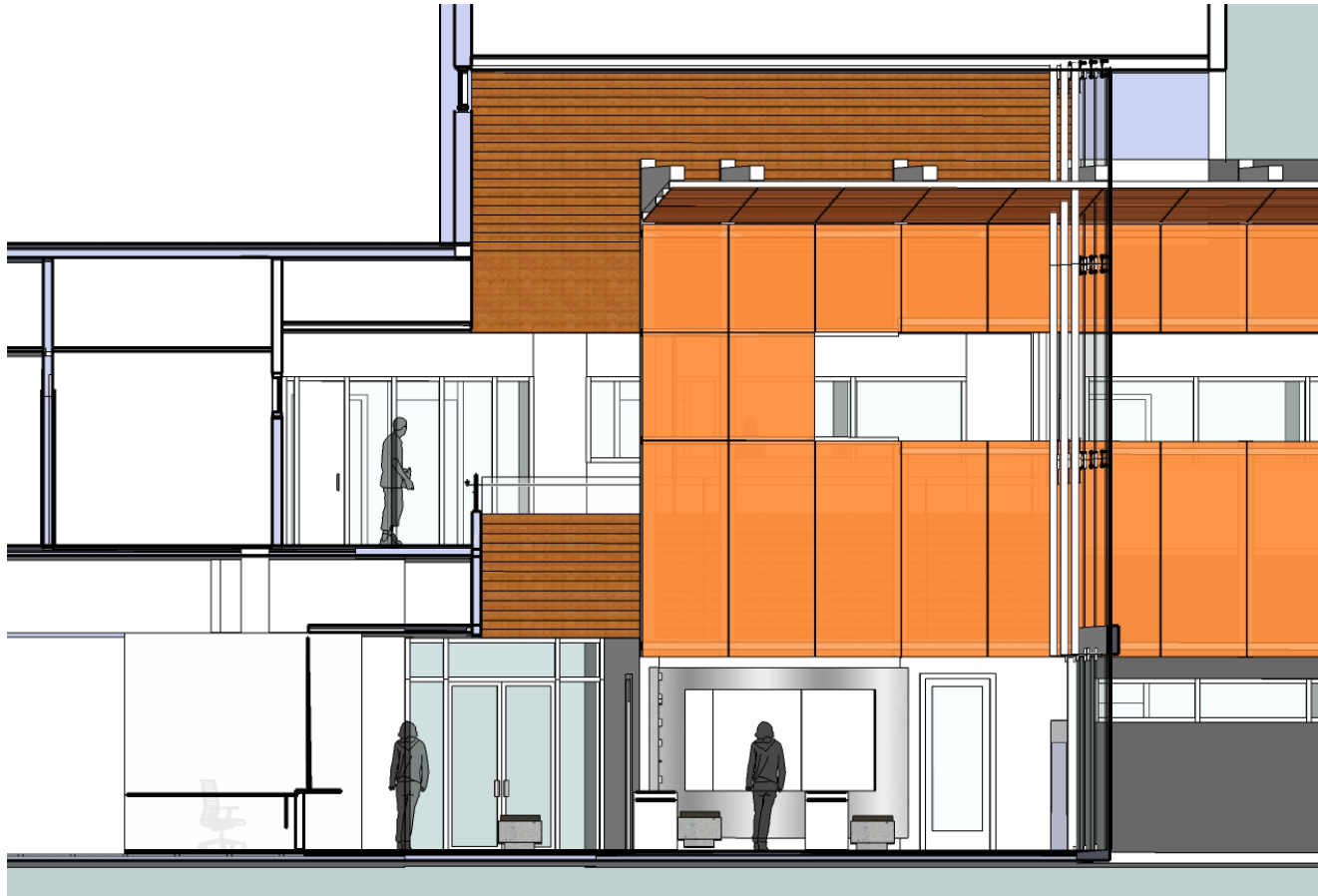


# Bullpen Scenarios – Distribution of Materials

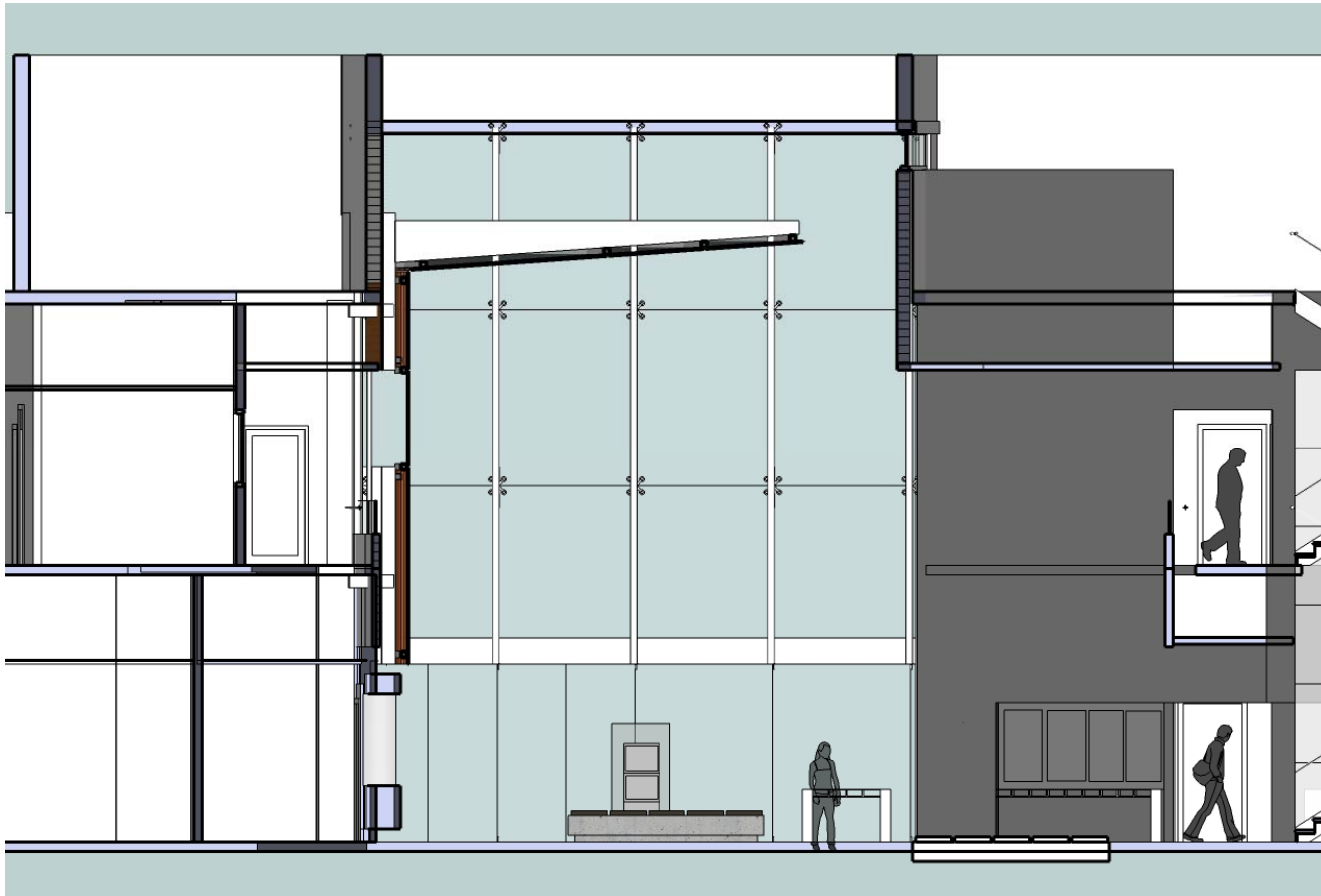




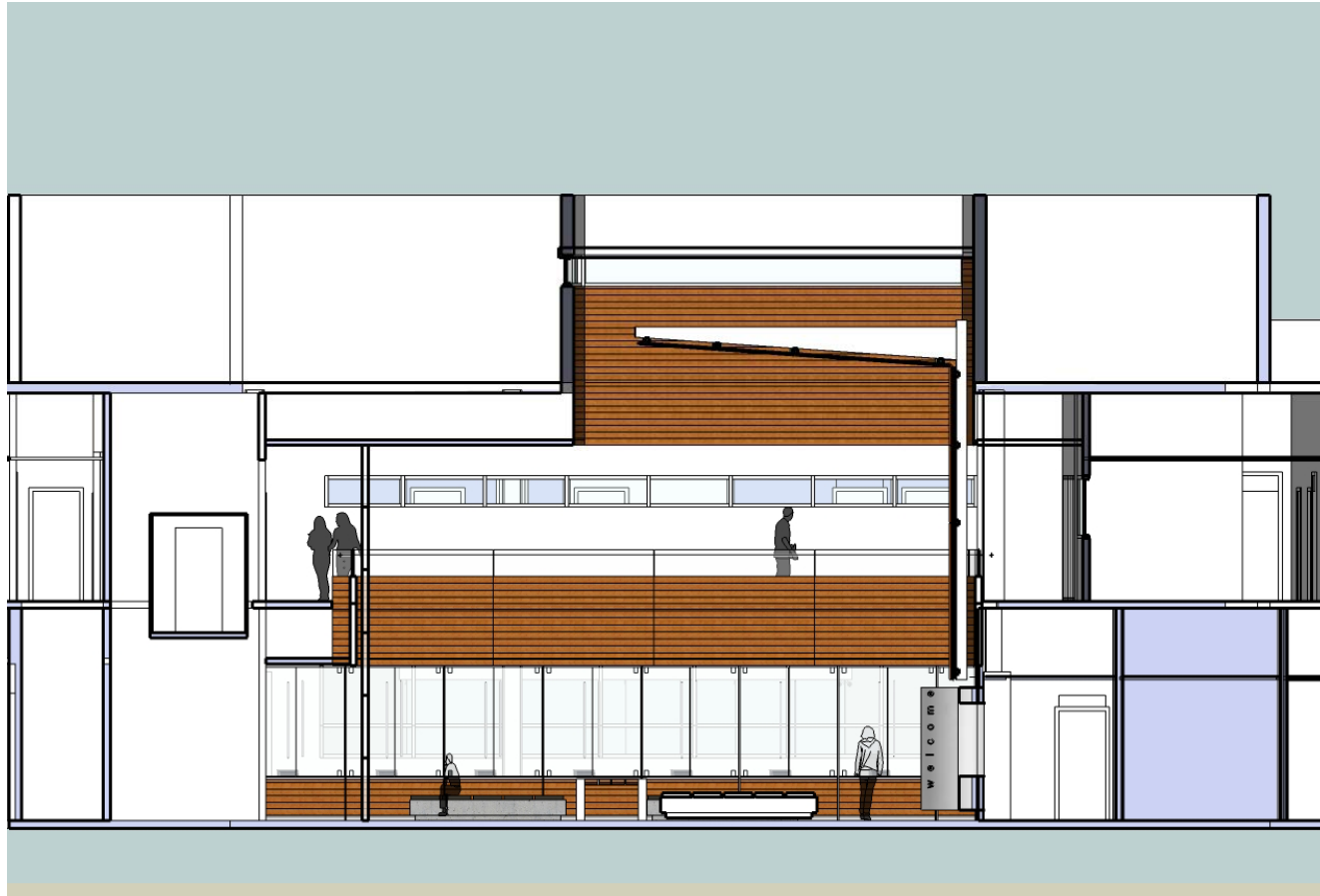
# Bullpen Scenarios – Elevation at Welcome Center



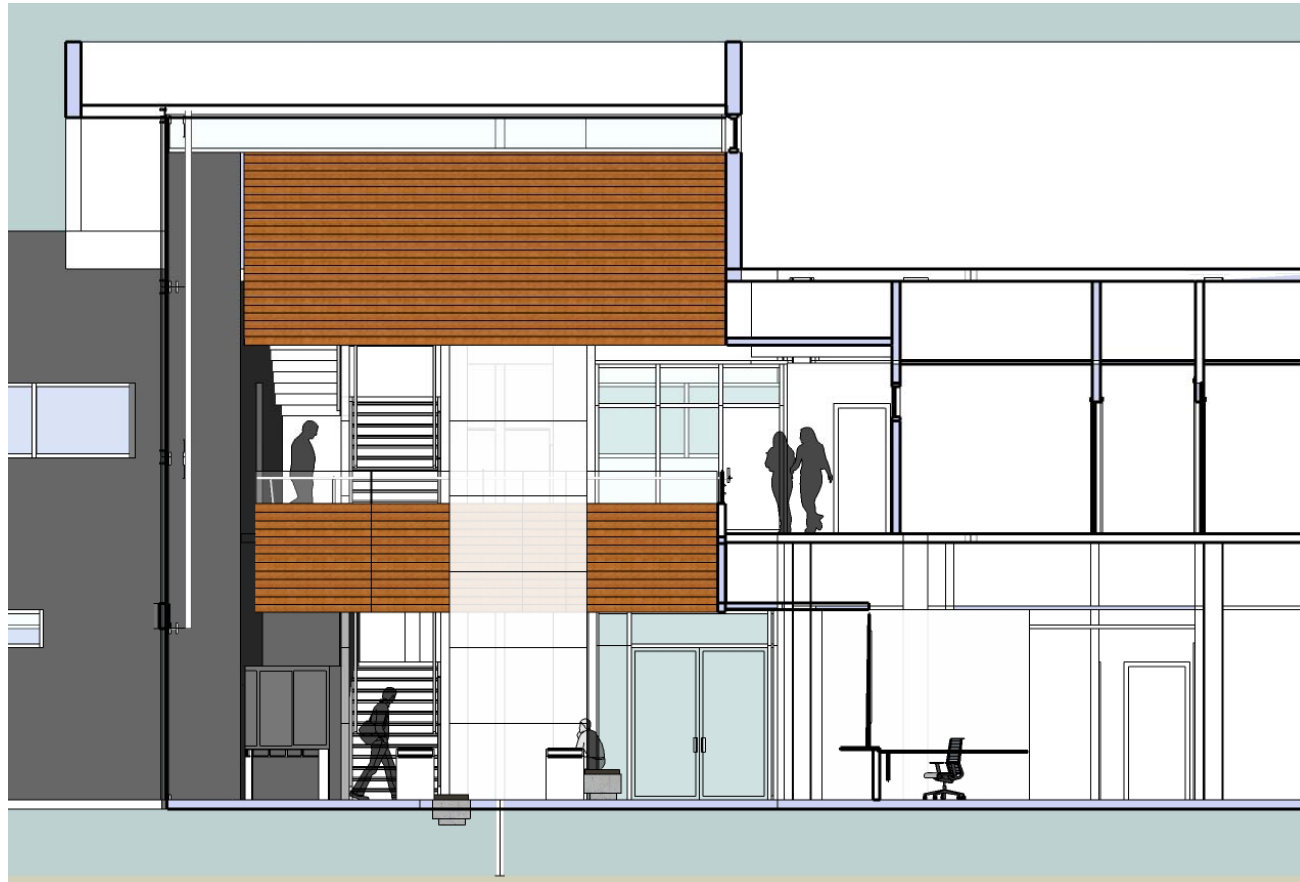
# Bullpen Scenarios – Elevation at Main Entry



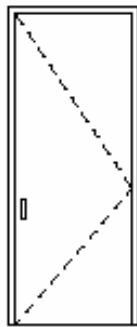
# Bullpen Scenarios – Elevation at Advisor Stations



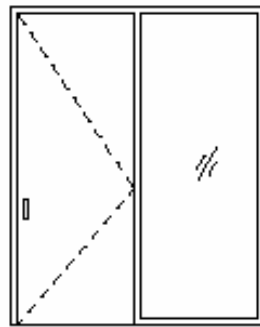
# Bullpen Scenarios – Elevation at Stair and Elevator



# Interior Considerations



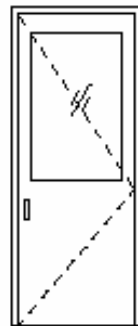
A



B



C



D



E

- **Interior Vision Lights**
  - Doors
  - Windows
- **Acoustical Considerations**
  - Counseling Offices
  - Computer/Testing Labs
  - Others
- **Built-in Cabinetry**
- **Special Wall Coverings**
  - Tackable boards
  - White/Marker boards
- **Special Lighting**
  - Overhead Fixtures
  - Task/Desk Fixtures

# Modesto Junior College Student Services Building

