

April 2016

## Measure E Bond Program Projects

### DESIGN PROGRESS

**West Campus Roads Project – Phase IIA:** The project is in the Bid Award Phase.

**West Campus Roads Project – Phase III Parking Lot Area 1:** The project is in the Division of State Architect for review and approval.

**West Campus Outdoor Education Center:** This project is in the Design Phase.

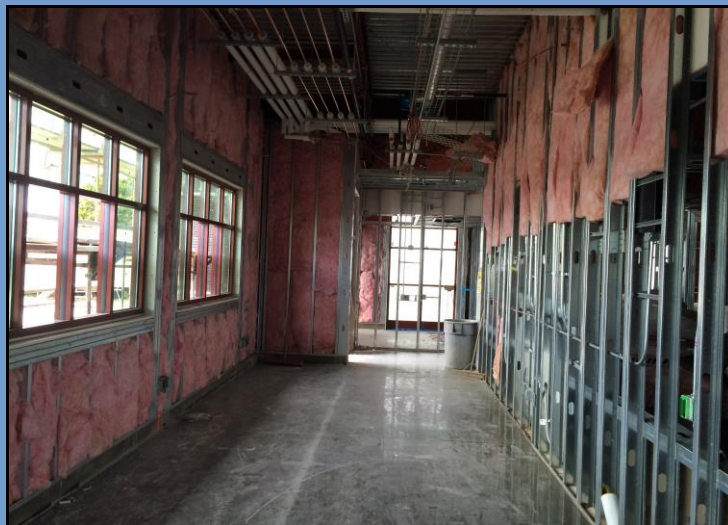
### CONSTRUCTION PROGRESS

**District Office Building:** The contractor is working on mechanical, electrical, and plumbing rough-ins, wall framing, roofing, exterior lath, and installing sheetrock.

**West Campus Roads Project – Phase I Westerly Roads Areas 3 & 4:** McFadden Construction broke ground on March 28 with the demolition of Parking Lot 207. Traffic is being redirected to G Street toward North of Lot 207.

COMPLETED PROJECTS:		
<ul style="list-style-type: none"> <li>✓ Ag Animal Fencing</li> <li>✓ Ag Housing</li> <li>✓ Ag Multipurpose Pavilion</li> <li>✓ Ag Multipurpose Pavilion Bleachers</li> <li>✓ Ag Multipurpose Pavilion Fencing</li> <li>✓ Ag Multipurpose Pavilion Parking Lot Extension</li> <li>✓ Art Life Safety Upgrade</li> <li>✓ Art Patio</li> <li>✓ Auditorium</li> <li>✓ Campus Way Parking Lot</li> <li>✓ Career Transfer</li> <li>✓ Central Plant Building and Fencing</li> <li>✓ Center for Advanced Technologies</li> </ul>	<ul style="list-style-type: none"> <li>✓ Central Services Traffic Signal on Blue Gum Avenue</li> <li>✓ East Campus Parking Lot</li> <li>✓ East Campus North Drive</li> <li>✓ East Campus South Drive</li> <li>✓ Founders Hall Renovation</li> <li>✓ Glacier Hall (Allied Health)</li> <li>✓ Great Valley Museum Education Demonstration Center</li> <li>✓ Great Valley Museum</li> <li>✓ Infrastructure Increment I</li> <li>✓ Interim Housing Phase I</li> <li>✓ Library Learning Resource Center</li> <li>✓ Nursing Cohort/Redbud Building</li> <li>✓ Primary Data Center</li> </ul>	<ul style="list-style-type: none"> <li>✓ Science Community Center &amp; GVM</li> <li>✓ Shipping and Receiving Building</li> <li>✓ Shipping and Receiving and MICL Building Demolition</li> <li>✓ Softball Restroom and Concession Stand</li> <li>✓ Student Services Building</li> <li>✓ Turlock Educational Site</li> <li>✓ Utility Infrastructure/Cabling Project</li> <li>✓ Utility Infrastructure/Signs (new Science Building area)</li> <li>✓ Utility Infrastructure Phase II (between Glacier Hall and new Science Building)</li> <li>✓ West Campus Parking Lot</li> <li>✓ West Campus Utility Pole Removal</li> </ul>

### DISTRICT OFFICE BUILDING



If you have any questions or concerns about ongoing construction activities or would like to get additional information about ongoing design projects, please contact Kitchell, CEM at 575-6991.