



Measure E Bond Program MODESTO JUNIOR COLLEGE CAMPUS CONSTRUCTION UPDATE



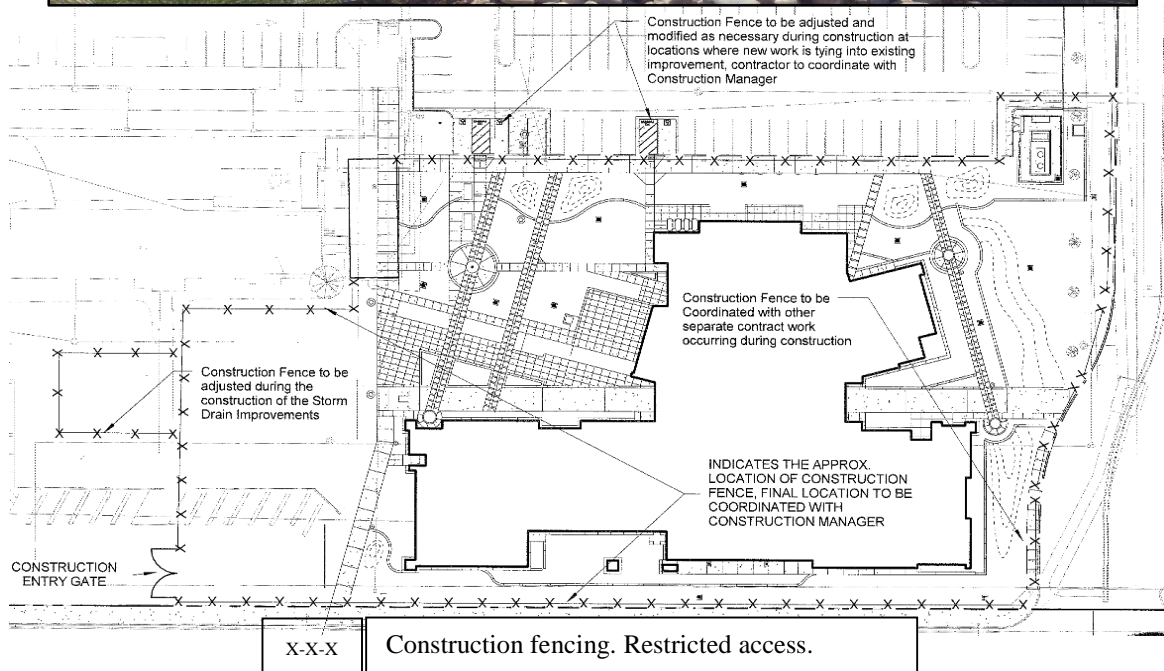
UPDATES & ACTIVITIES THAT MAY IMPACT CAMPUS OPERATION

Week of September 12, 2016

DISTRICT OFFICE BUILDING

Work this week: Contractor will continue to work on interior and exterior lighting, flooring, low-voltage finish, and landscaping.

Access: None.
Noise: Moderate due to construction equipment.
Parking: None.
Utilities: None.
Odors: None.
Dust: Minor impact.





Measure E Bond Program MODESTO JUNIOR COLLEGE CAMPUS CONSTRUCTION UPDATE Page 2 of 4

WEST CAMPUS ROADS PHASE I (AREAS 3 & 4)

Work this week: Concrete flat work will occur all of next week. Standing of light poles along the 2nd half of E Street will occur. Striping work will occur on Friday to finish the work week.

Access: Please see Areas 5 & 6 map for campus navigation.

Noise: Extreme noise due to heavy construction equipment.

Parking: Parking Lot 202 will only have parking access at the southern stalls. Parking lot 209 is closed.

Utilities: None anticipated.

Odors: None anticipated.

Dust: Moderate impact due to construction related activities.





Measure E Bond Program MODESTO JUNIOR COLLEGE CAMPUS CONSTRUCTION UPDATE

Page 3 of 4

WEST CAMPUS ROADS PHASE IIA (AREA 5)

Work this week: Electrical work is ongoing for the week along with irrigation. During the work week we will also be surveying for finish grade on the roads.

Access: Parking Lot 203, 207, 211 & 215 are now open.

Noise: Extreme noise due to heavy construction equipment.

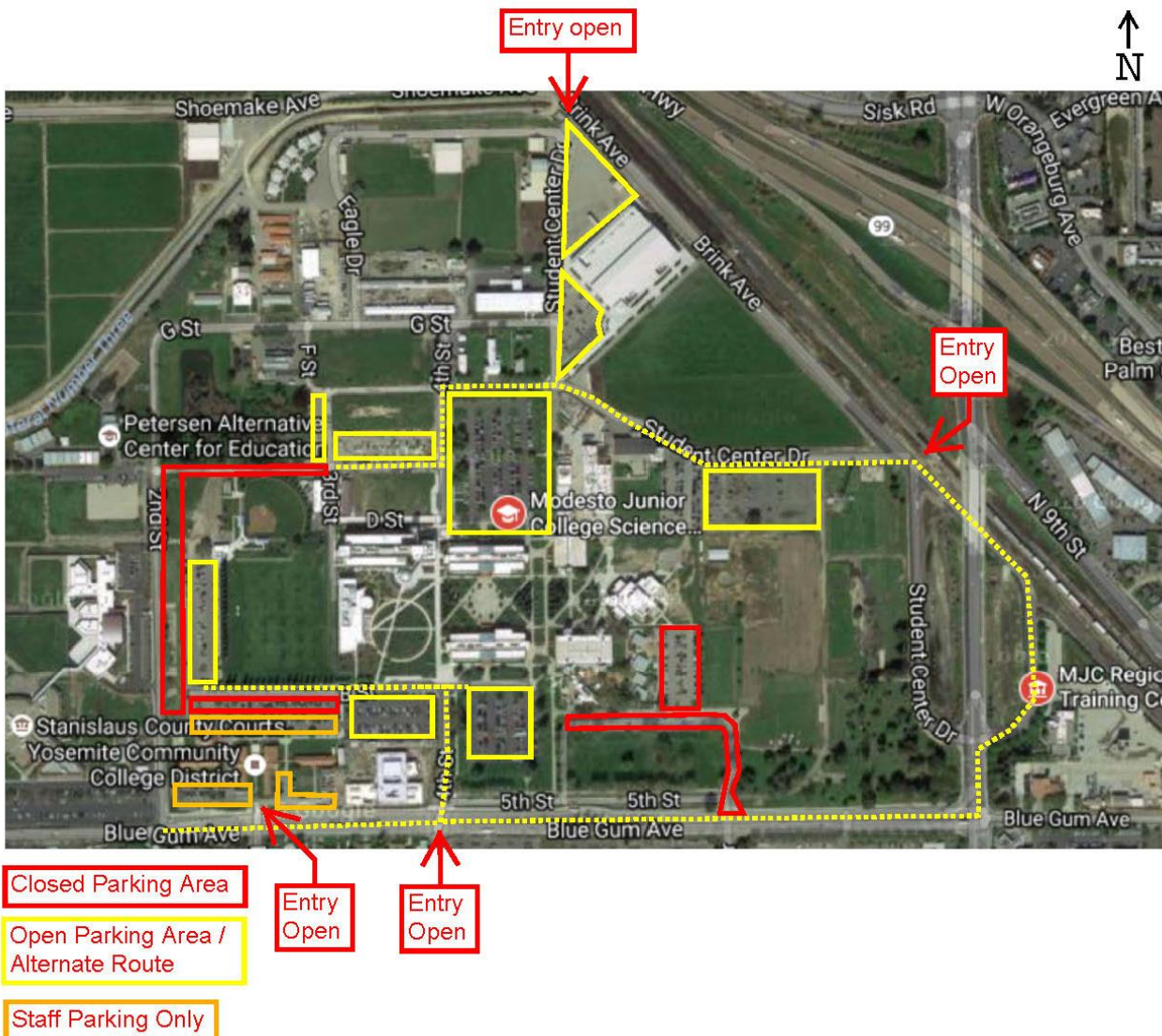
Parking: Parking Lot 202 will only have parking access at the southern stalls. Parking lot 209 is closed.

Utilities: None anticipated.

Odors: None anticipated.

Dust: Moderate impact due to construction related activities.

MJC West Campus Temporary Parking Closures
August 29th (1st day of school 2016)





EXTERIOR PAINTING PROJECT MUSIC BUILDING AND MARY STUART ROGERS

Work this week: Continue spray painting trims and doing minor touch-ups.

Access: None anticipated
Noise: Minor noise due to painting equipment.
Parking: None anticipated.
Utilities: None anticipated.
Odors: Moderate due to painting exterior of building.
Dust: Minor impact due to painting exterior of building.



If there are any questions or concerns please contact Kitchell CEM, located at
2201 Blue Gum Ave., Modesto CA 95358 Tel: 575-6991 E-mail: avalencia@kitchell.com