



## Measure E Bond Program COLUMBIA COLLEGE CAMPUS *CONSTRUCTION UPDATE*



### UPDATES & ACTIVITIES THAT MAY IMPACT CAMPUS OPERATION

*Week of May 27, 2013*

#### MJC NURSING COHORT - REDBUD

**Work this week:** This week, painting of interior walls will continue along with installation of ceiling tiles and HVAC ductwork. Outside the building the GC will remove formwork from new walkways and touch-up landscaped areas.

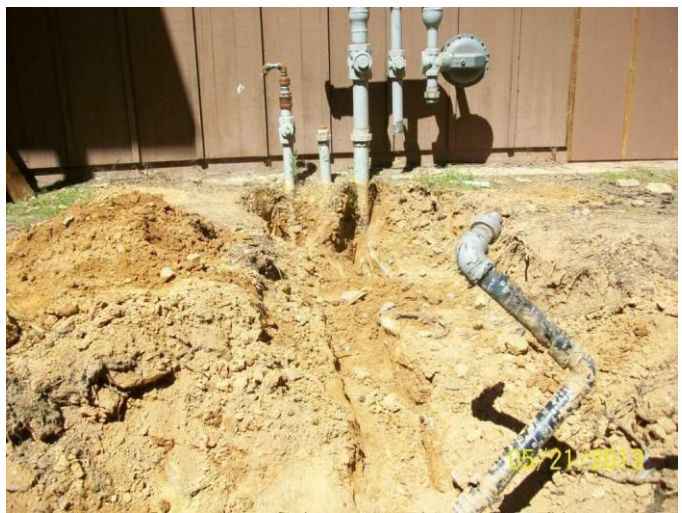
**Access:** Limited access through drive isle north of building.  
**Noise:** Loud noise warning due to heavy construction equipment and machinery.  
**Parking:** Parking impact due to contractor's parking along drive isle.  
**Dust:** Dust anticipated due to site work construction activities.  
**Odors:** Low Impact.  
**Utilities:** No impact to utilities is anticipated.



## Secondary Data Center

**Work this week:** This week's work will include demolition of existing mechanical, electrical and plumbing systems inside the building. Outside the building, the building's main electrical pathway will be start being installed and demolition of existing utilities will continue.

**Access:** Section of par course west of building will be closed starting May 21<sup>st</sup> - June 21<sup>st</sup> .  
**Noise:** Moderate noise could occur occasionally due to demolition activities.  
**Parking:** Moderate impact to parking at tennis courts due to contractor's staging of construction materials.  
**Dust:** Moderate impact due to site related construction activities.  
**Odors:** Low Impact  
**Utilities:** No impact to utilities is anticipated.



If there are any questions or concerns contact Kitchell CEM, Measure E Bond Construction Manager, located at 2201 Blue Gum Ave., Modesto CA 95358 Tel: 575-6991 Email [rmartin@kitchell.com](mailto:rmartin@kitchell.com)

