



Measure E Bond Program COLUMBIA COLLEGE CAMPUS *CONSTRUCTION UPDATE*



UPDATES & ACTIVITIES THAT MAY IMPACT CAMPUS OPERATION

Week of May 6, 2013

MJC NURSING COHORT - REDBUD

Work this week: This week's work will include completing interior wood framing and MEP rough-in work inside walls to allow for installation of drywall.

Access:	Low Impact
Noise:	Moderate noise could occur occasionally due to saw cutting, and hammering.
Parking:	Moderate impact due to contractor's parking along side of the road.
Dust:	Low impact
Odors:	Low Impact
Utilities:	No impact to utilities is anticipated



Secondary Data Center

Work this week: Demo work of existing mechanical, electrical and plumbing systems is ongoing.

Access: Caution is advised at tennis courts and student trail south of building.

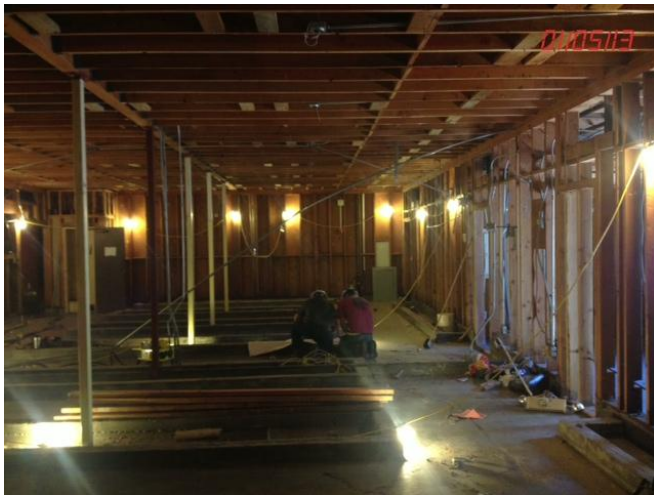
Noise: Moderate noise could occur occasionally due to demolition activities.

Parking: Moderate impact due to contractor's parking along side of the road.

Dust: Low impact

Odors: Low Impact

Utilities: No impact to utilities is anticipated



If there are any questions or concerns contact Kitchell CEM, Measure E Bond Construction Manager, located at 2201 Blue Gum Ave., Modesto CA 95358 Tel: 575-6991 Email rmartin@kitchell.com

