



Measure E Bond Program COLUMBIA COLLEGE CAMPUS *CONSTRUCTION UPDATE*



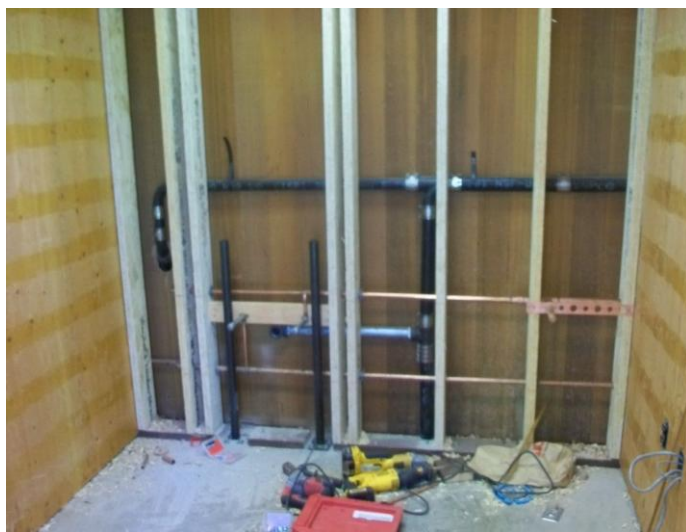
UPDATES & ACTIVITIES THAT MAY IMPACT CAMPUS OPERATION

Week of April 22, 2013

MJC NURSING COHORT - REDBUD

Work this week: Interior wood framing work continues. This week's work will include wooden wall framing and rough installation of mechanical, electrical and plumbing systems.

Access:	Low Impact
Noise:	Moderate noise could occur occasionally due to saw cutting, and hammering.
Parking:	Moderate impact due to contractor's parking along side of the road.
Dust:	Low impact
Odors:	Low Impact
Utilities:	No impact to utilities is anticipated



If there are any questions or concerns contact Kitchell CEM, Measure E Bond Construction Manager, located at 2201 Blue Gum Ave., Modesto CA 95358 Tel: 575-6991 Email rmartin@kitchell.com

