

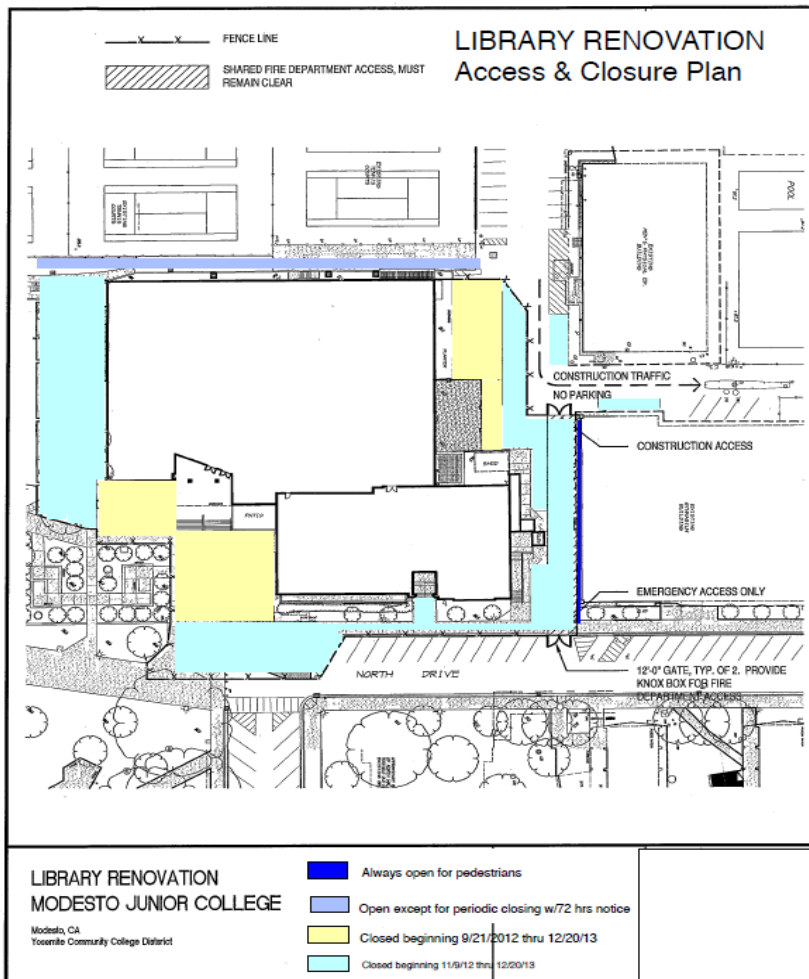


UPDATES & ACTIVITIES THAT MAY IMPACT
CAMPUS OPERATION
Week of December 9, 2013

LIBRARY RENOVATION

Work this week: Continued installation of furniture items.

- Access:** See access map below
- Noise:** Moderate: equipment & deliveries
- Parking:** See attached map for closure.
- Utilities:** None
- Odors:** None
- Dust:** None



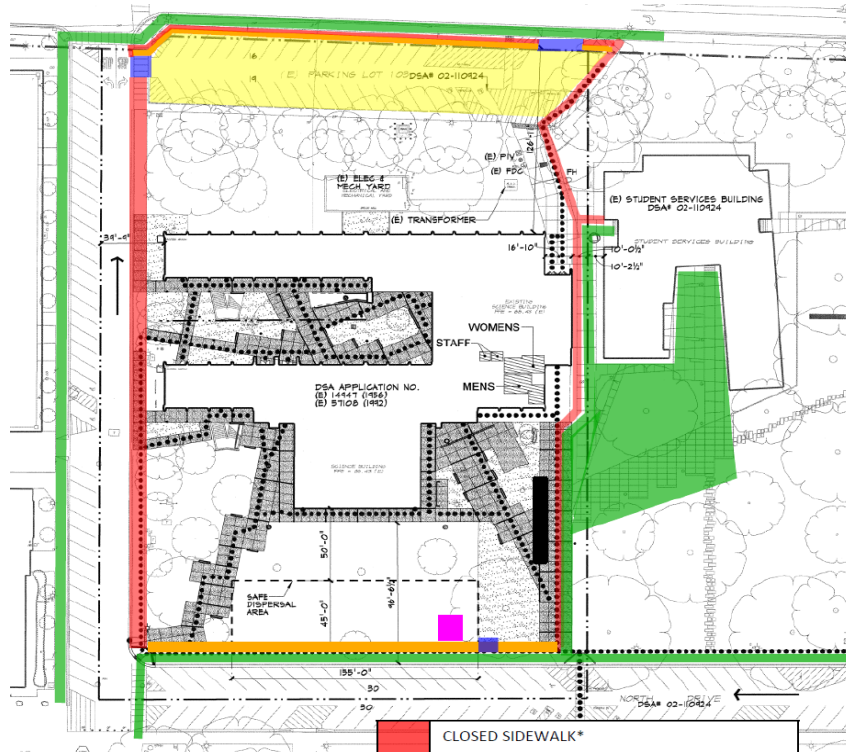


Measure E Bond Program MODESTO JUNIOR COLLEGE CAMPUS CONSTRUCTION UPDATE

HIGH TECH (NORTH HALL) MODERNIZATION

Work this week: Hard demo and soft demo.

Access: See access map below
Noise: Moderate: equipment & deliveries
Parking: See attached map for closure.
Utilities: None
Odors: None
Dust: None



**NORTH HALL
Access and Closure Map**

	CLOSED SIDEWALK*
	CLOSED PARKING LOT*
	GATE IN FENCE
	OPEN SIDEWALK (Portions may need to close towards the end of the project for new concrete)
	FENCE ALONG OPEN SIDEWALK
	CONSTRUCTION TRAILER
	KITCHELL TRAILER
	* Duration of the Project

If there are any questions or concerns contact Kitchell CEM, Measure E Bond Construction Manager, located at 2201 Blue Gum Ave., Modesto CA 95358 Tel: 575-6991 Email mkennedy@kitchell.com

