



**UPDATES & ACTIVITIES THAT MAY IMPACT
 CAMPUS OPERATION**
Week of August 5, 2013

INFRASTRUCTURE

Work this week: Working on punchlist items.

- Access:** Moderate impact
- Noise:** No anticipated impact
- Parking:** No anticipated impact
- Utilities:** No anticipated impact
- Odors:** No anticipated impact
- Dust:** No anticipated impact



SHIPPING & RECEIVING BLDG

Work this week: Working on punchlist items.

- Access:** Caution at G Street and 5th Street
- Noise:** Moderate: equipment & deliveries
- Parking:** No anticipated impact
- Utilities:** No anticipated impact
- Odors:** No anticipated impact
- Dust:** No anticipated impact



PRIMARY DATA CENTER

Work this week: Continue installing cable trays and data racks in data room. Continue installing data cabling in data room. Continue installing busducts in data room.

- Access:** Caution at G Street and 3rd street.
- Noise:** Moderate impact
- Parking:** No anticipated impact
- Utilities:** No anticipated impact
- Odors:** No anticipated impact
- Dust:** Moderate impact



07.30.2013



Measure E Bond Program MODESTO JUNIOR COLLEGE CAMPUS CONSTRUCTION UPDATE *continued (page 2 of 4)*

LIBRARY RENOVATION

Work this week: Continue painting, interior finishes and electrical installation. Continue exterior site work. Continue installation of low voltage systems.

Access:	See access map below
Noise:	Moderate: equipment & deliveries
Parking:	See attached map for closure.
Utilities:	None
Odors:	None
Dust:	None



CAREER TRANSFER CENTER

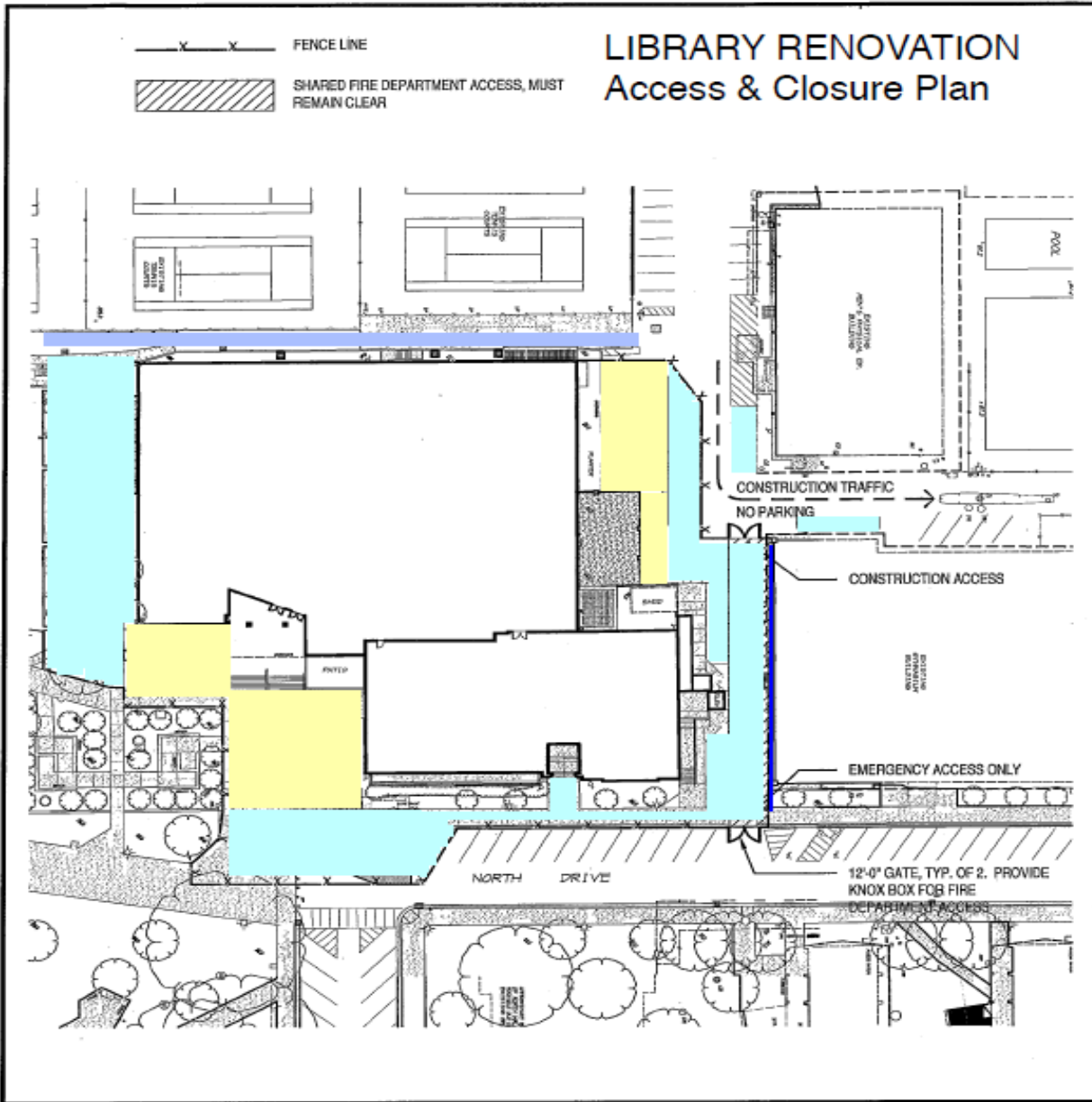
Work this week: Interior painting. Pulling wires. Installation of flooring. Installing finishes.

Access:	See updated access map below
Noise:	Moderate: equipment & deliveries
Parking:	See attached map for closure.
Utilities:	None
Odors:	None
Dust:	None





Measure E Bond Program
MODESTO JUNIOR COLLEGE CAMPUS
CONSTRUCTION UPDATE
continued (page 3 of 4)



LIBRARY RENOVATION
MODESTO JUNIOR COLLEGE

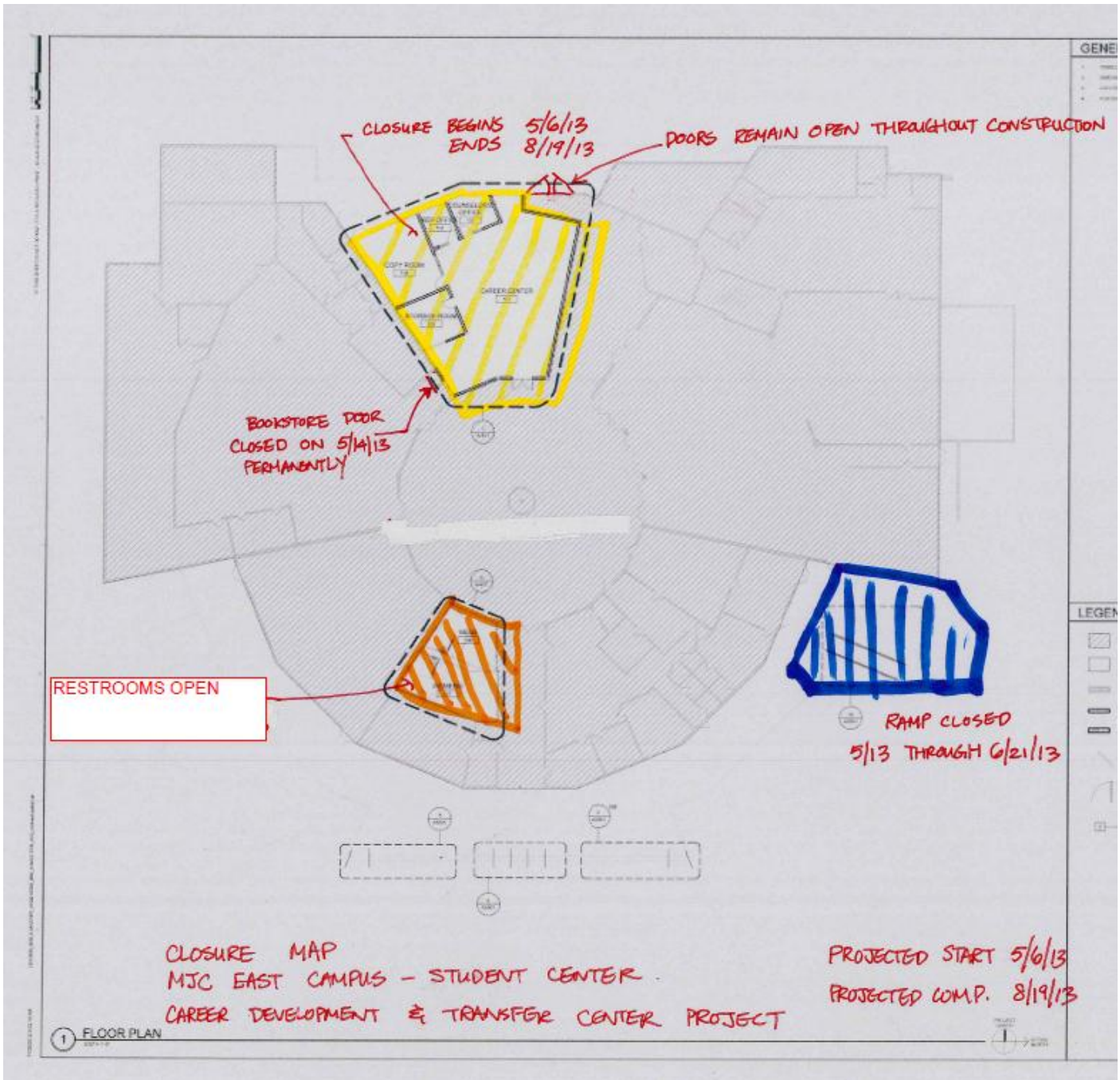
Modesto, CA
 Yosemite Community College District

- Always open for pedestrians
- Open except for periodic closing w/72 hrs notice
- Closed beginning 9/21/2012 thru 12/20/13
- Closed beginning 11/9/12 thru 12/20/13



Measure E Bond Program MODESTO JUNIOR COLLEGE CAMPUS CONSTRUCTION UPDATE continued (page 4 of 4)

CAREER DEVELOPMENT & TRANSFER CENTER – Access & Closure Map



If there are any questions or concerns contact Kitchell CEM, Measure E Bond Construction Manager, located at 2201 Blue Gum Ave., Modesto CA 95358 Tel: 575-6991 Email mkennedy@kitchell.com

