



Measure E Bond Program MODESTO JUNIOR COLLEGE CAMPUS CONSTRUCTION UPDATE



UPDATES & ACTIVITIES THAT MAY IMPACT CAMPUS OPERATION *Week of April 1, 2013*

SCIENCE COMMUNITY CENTER

Work this week: Clean up and finish work ongoing.
Working on punchlist items.

Access:	No anticipated impact
Noise:	Moderate impact
Parking:	No anticipated impact
Utilities:	No anticipated impact
Odors:	No anticipated impact
Dust:	No anticipated impact



INFRASTRUCTURE

Work this week: Continued installation of way finding signs.

Access:	Moderate impact
Noise:	No anticipated impact
Parking:	No anticipated impact
Utilities:	No anticipated impact
Odors:	No anticipated impact
Dust:	No anticipated impact



SHIPPING & RECEIVING BLDG

Work this week: Metal building construction, installation of metal wall and roof panels. Metal stud framing, interior rough in mechanical, electrical and plumbing.

Access:	None
Noise:	Moderate: equipment & deliveries
Parking:	No anticipated impact
Utilities:	No anticipated impact
Odors:	No anticipated impact
Dust:	No anticipated impact





Measure E Bond Program MODESTO JUNIOR COLLEGE CAMPUS CONSTRUCTION UPDATE *continued (page 2 of 3)*

PRIMARY DATA CENTER

Work this week: Continued installation of flashing for metal roof system and exterior wall panels. Continued installation of sheet rock, tape and mud at interior walls. Start ceramic tile installation at restrooms. Start exterior painting.

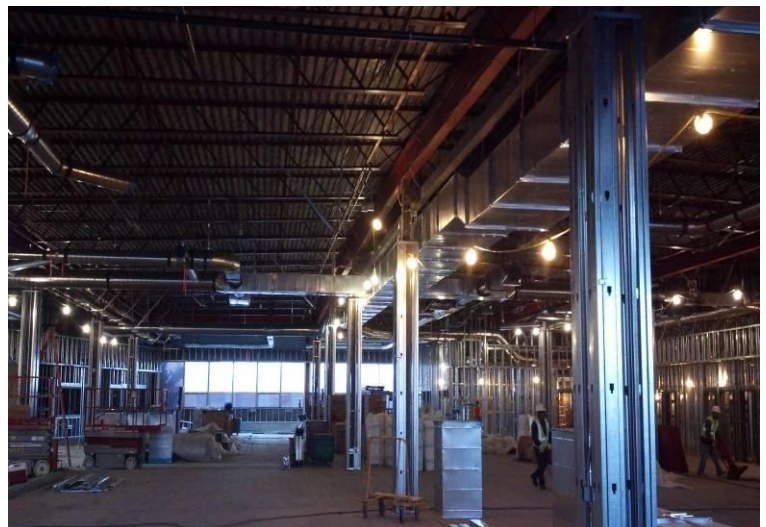
Access:	Caution at G Street and 3 rd street.
Noise:	Moderate impact
Parking:	No anticipated impact
Utilities:	No anticipated impact
Odors:	No anticipated impact
Dust:	Moderate impact



LIBRARY RENOVATION

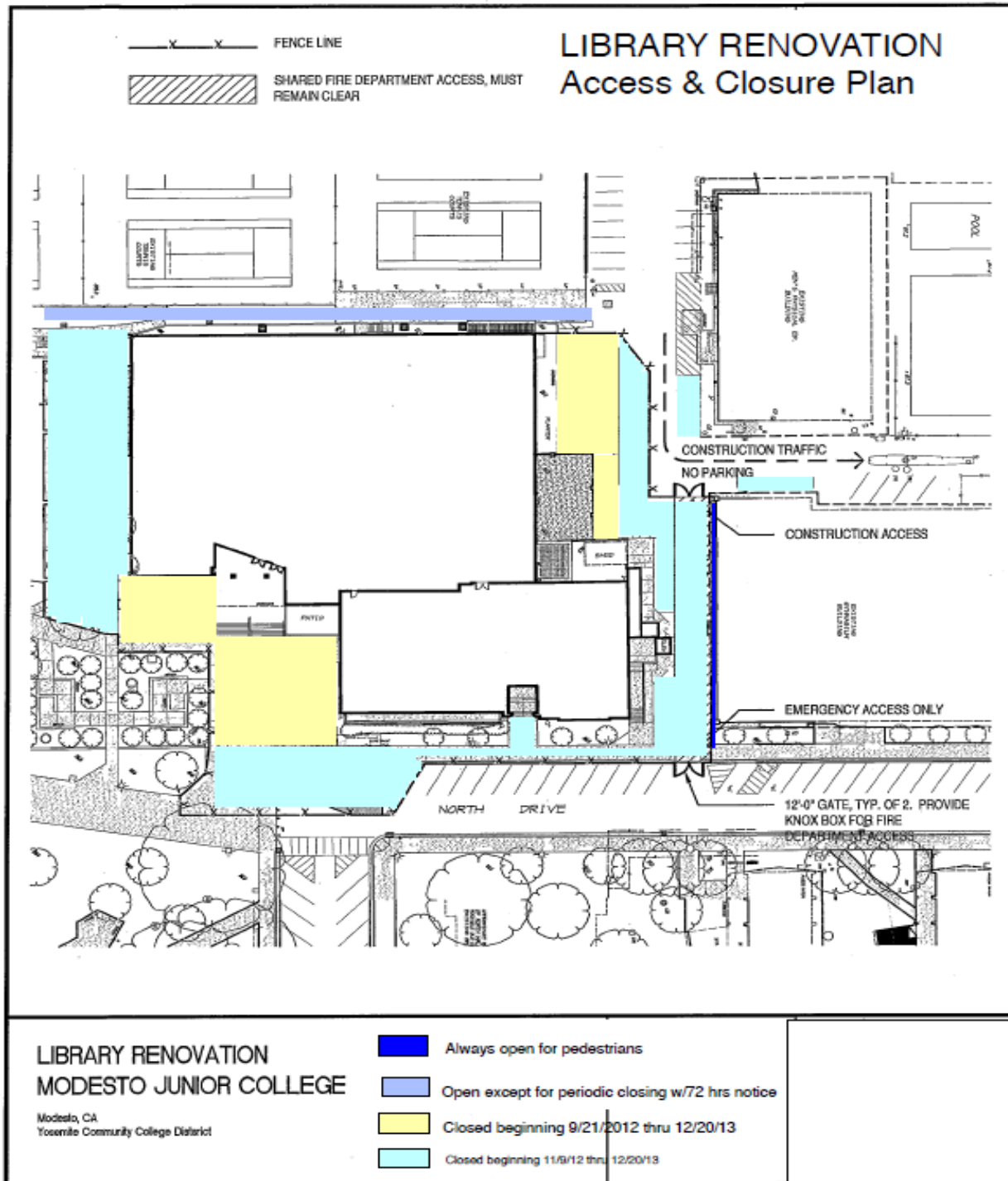
Work this week: Continue mechanical, electrical, and plumbing rough in. Continue interior framing. Pulling wire through conduits.

Access:	See updated access map below
Noise:	Moderate: equipment & deliveries
Parking:	See attached map for closure.
Utilities:	None
Odors:	None
Dust:	None





Measure E Bond Program
MODESTO JUNIOR COLLEGE CAMPUS
CONSTRUCTION UPDATE
continued (page 3 of 3)



If there are any questions or concerns contact Kitchell CEM, Measure E Bond Construction Manager, located at 2201 Blue Gum Ave., Modesto CA 95358 Tel: 575-6991 Email mkennedy@kitchell.com

