



Measure E Bond Program MODESTO JUNIOR COLLEGE CAMPUS CONSTRUCTION UPDATE

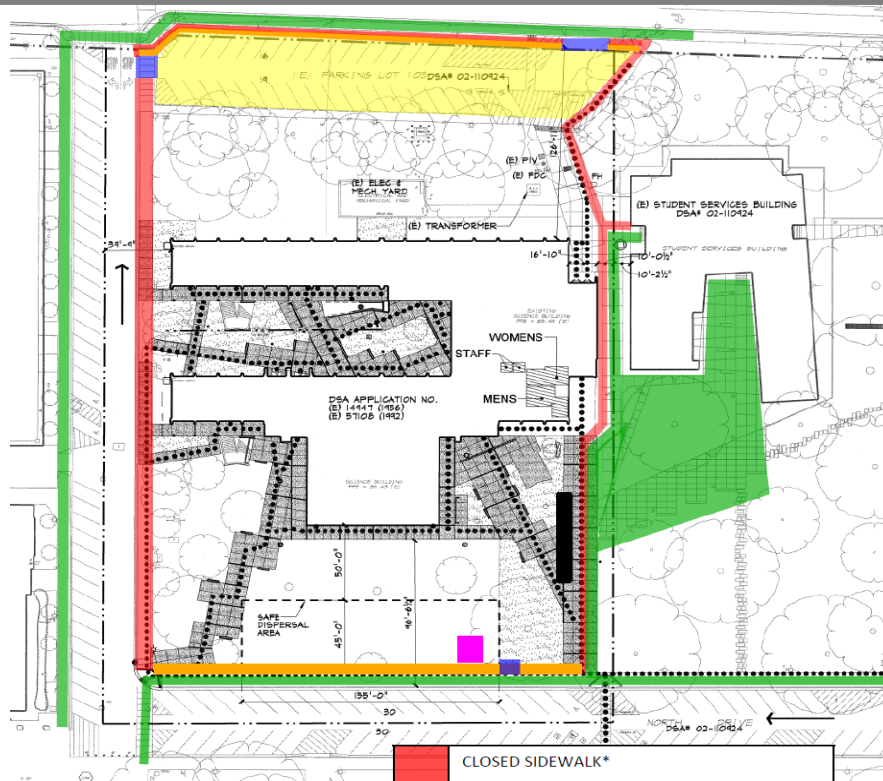


UPDATES & ACTIVITIES THAT MAY IMPACT CAMPUS OPERATION *Week of March 9, 2015*

HIGH TECH (NORTH HALL) MODERNIZATION

Work this week: Terminating low voltage wiring and installing light fixtures. Continue work on all interior finishes.

Access:	Partial closure at North Drive sidewalk.
Noise:	Minimal.
Parking:	See attached map for closure.
Utilities:	None
Odors:	None
Dust:	None



**NORTH HALL
Access and Closure Map**

	CLOSED SIDEWALK*
	CLOSED PARKING LOT*
	GATE IN FENCE
	OPEN SIDEWALK (Portions may need to close towards the end of the project for new concrete)
	FENCE ALONG OPEN SIDEWALK
	CONSTRUCTION TRAILER
	KITCHELL TRAILER
	* Duration of the Project

GVM EDUCATION DEMONSTRATION CENTER

Work this week: Roofing and metal stud installation in progress.

Access: Caution at 3rd and E Street.
Partial closure at 4th Street.
See map below

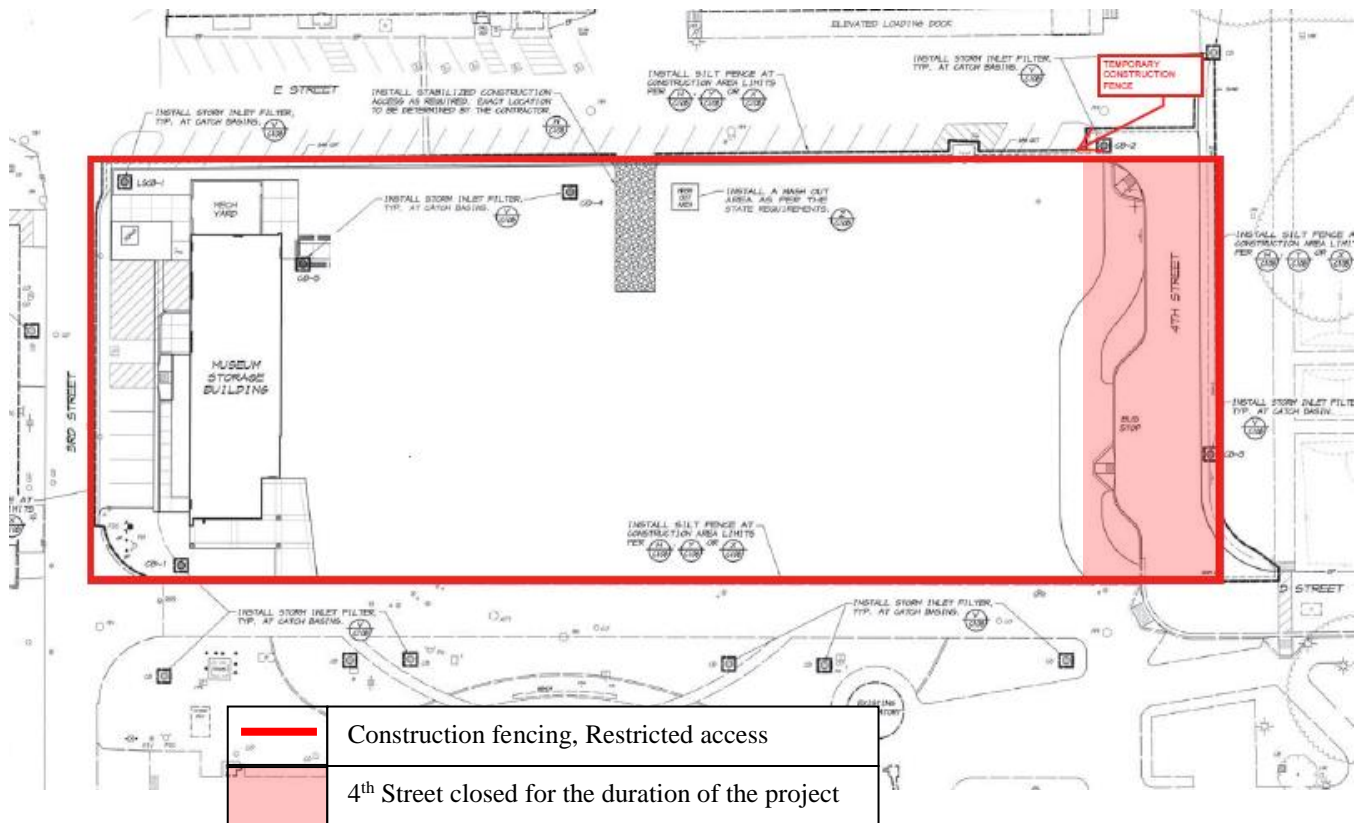
Noise: Moderate: Heavy equipment deliveries

Parking: None

Utilities: None

Odors: None

Dust: None



If there are any questions or concerns contact Kitchell CEM, Measure E Bond Construction Manager, located at 2201 Blue Gum Ave., Modesto CA 95358 Tel: 575-6991 Email mkenedy@kitchell.com