



## HIGH TECH (NORTH HALL) MODERNIZATION

**Access:** Partial closure at North Drive sidewalk

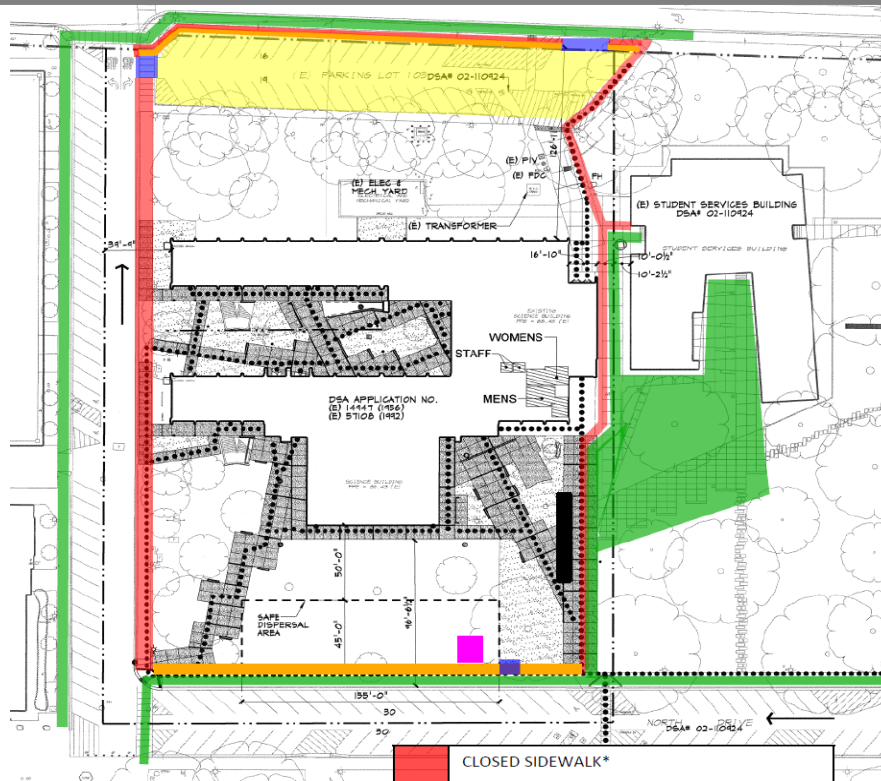
**Noise:** Substantial: Drilling

**Parking:** See attached map for closure.

**Utilities:** None

**Odors:** None

**Dust:** None



	CLOSED SIDEWALK*
	CLOSED PARKING LOT*
	GATE IN FENCE
	OPEN SIDEWALK (Portions may need to close towards the end of the project for new concrete)
	FENCE ALONG OPEN SIDEWALK
	CONSTRUCTION TRAILER
	KITCHELL TRAILER
	* Duration of the Project

## GVM EDUCATION DEMONSTRATION CENTER

**Work this week:** Continue installation of CMU block.

**Access:** Caution at 3<sup>rd</sup> and E Street.  
Partial closure at 4<sup>th</sup> Street.  
See map below

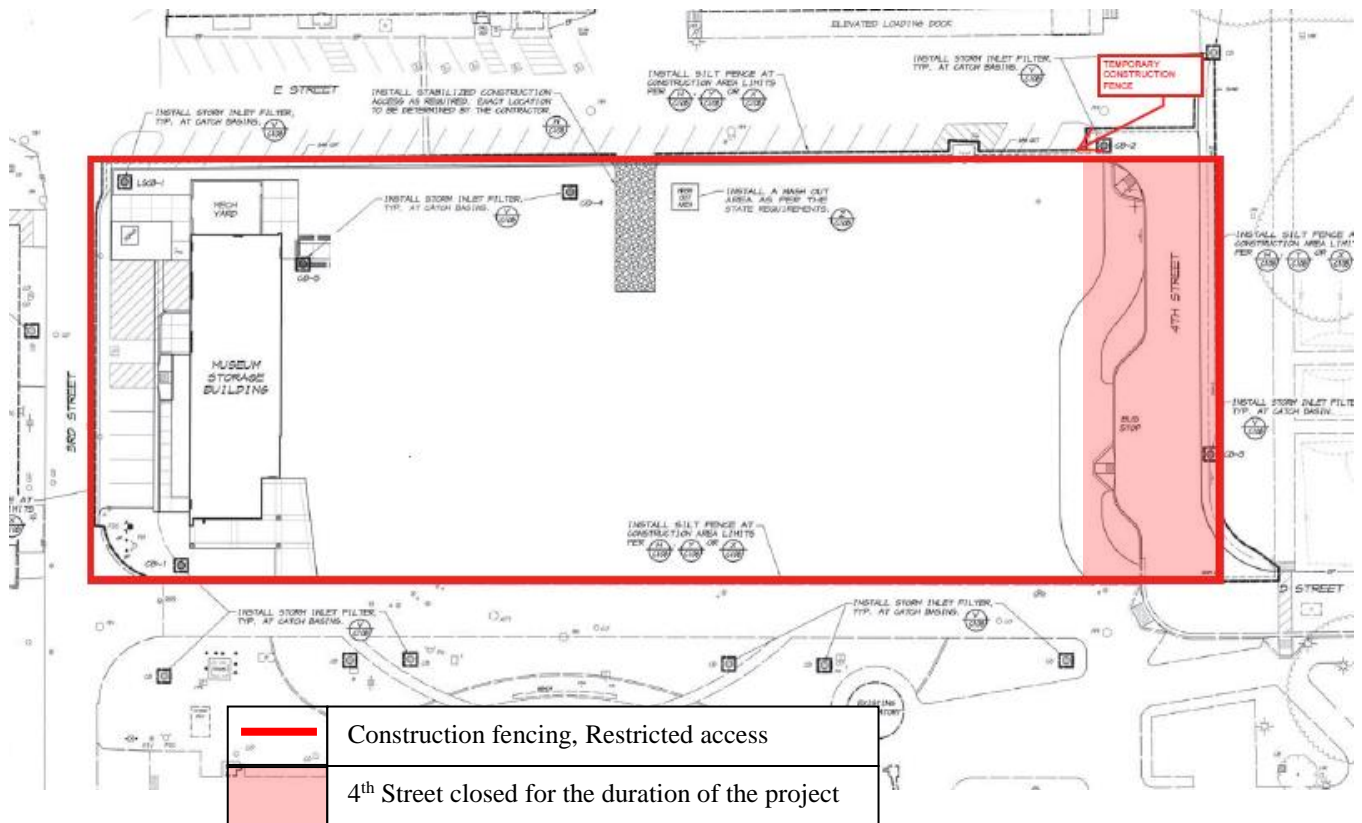
**Noise:** Moderate: Heavy equipment deliveries

**Parking:** None

**Utilities:** None

**Odors:** None

**Dust:** None



If there are any questions or concerns contact Kitchell CEM, Measure E Bond Construction Manager, located at 2201 Blue Gum Ave., Modesto CA 95358 Tel: 575-6991 Email [mkennedy@kitchell.com](mailto:mkennedy@kitchell.com)