



# Measure E Bond Program MODESTO JUNIOR COLLEGE CAMPUS CONSTRUCTION UPDATE

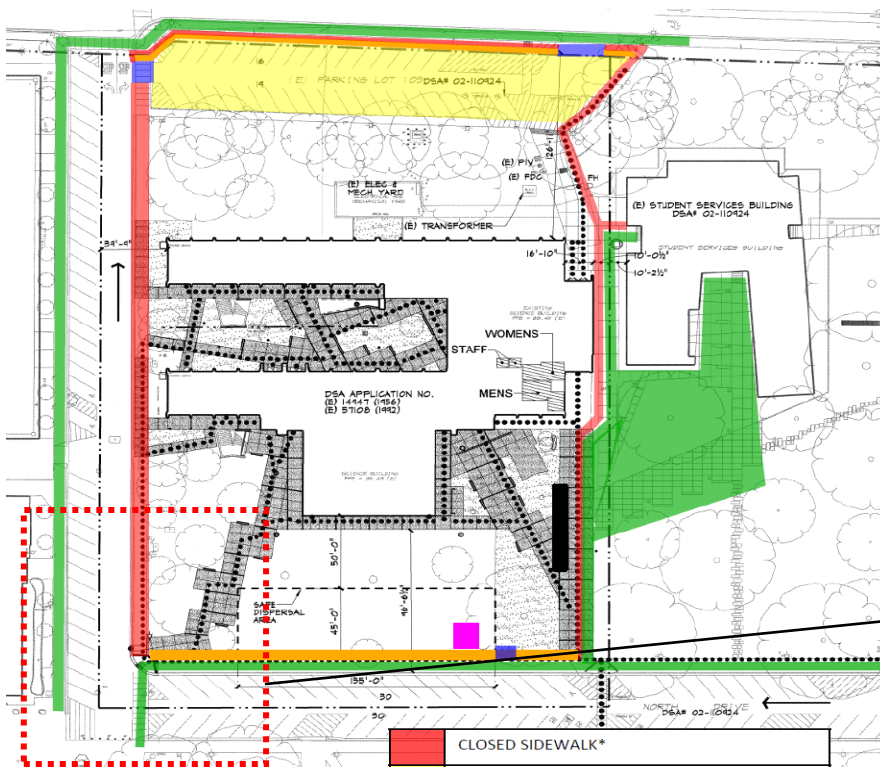


## UPDATES & ACTIVITIES THAT MAY IMPACT CAMPUS OPERATION *Week of July 7, 2014*

### HIGH TECH (NORTH HALL) MODERNIZATION

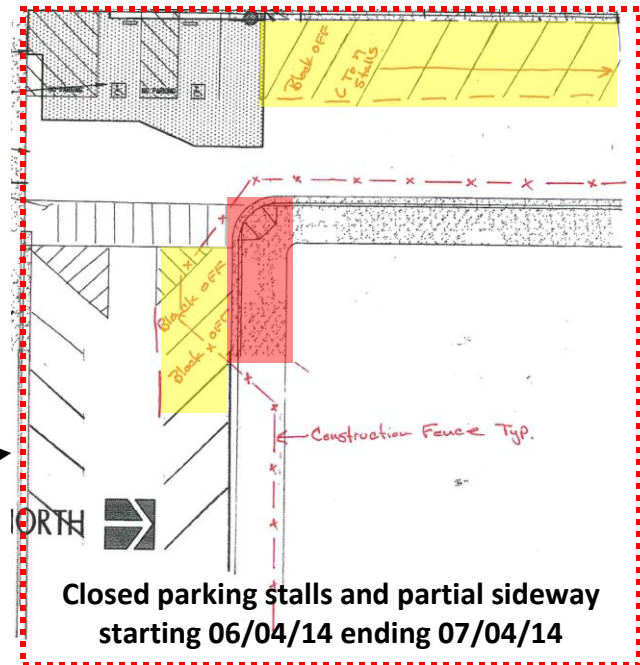
**Work this week:** Mechanical, electrical and plumbing rough in. Metal stud framing and installation of Densglass sheathing. Start installation of roof.

<b>Access:</b>	Partial closure at North Drive sidewalk
<b>Noise:</b>	Substantial: Drilling
<b>Parking:</b>	See attached map for closure.
<b>Utilities:</b>	None
<b>Odors:</b>	None
<b>Dust:</b>	None



**NORTH HALL  
Access and Closure Map**

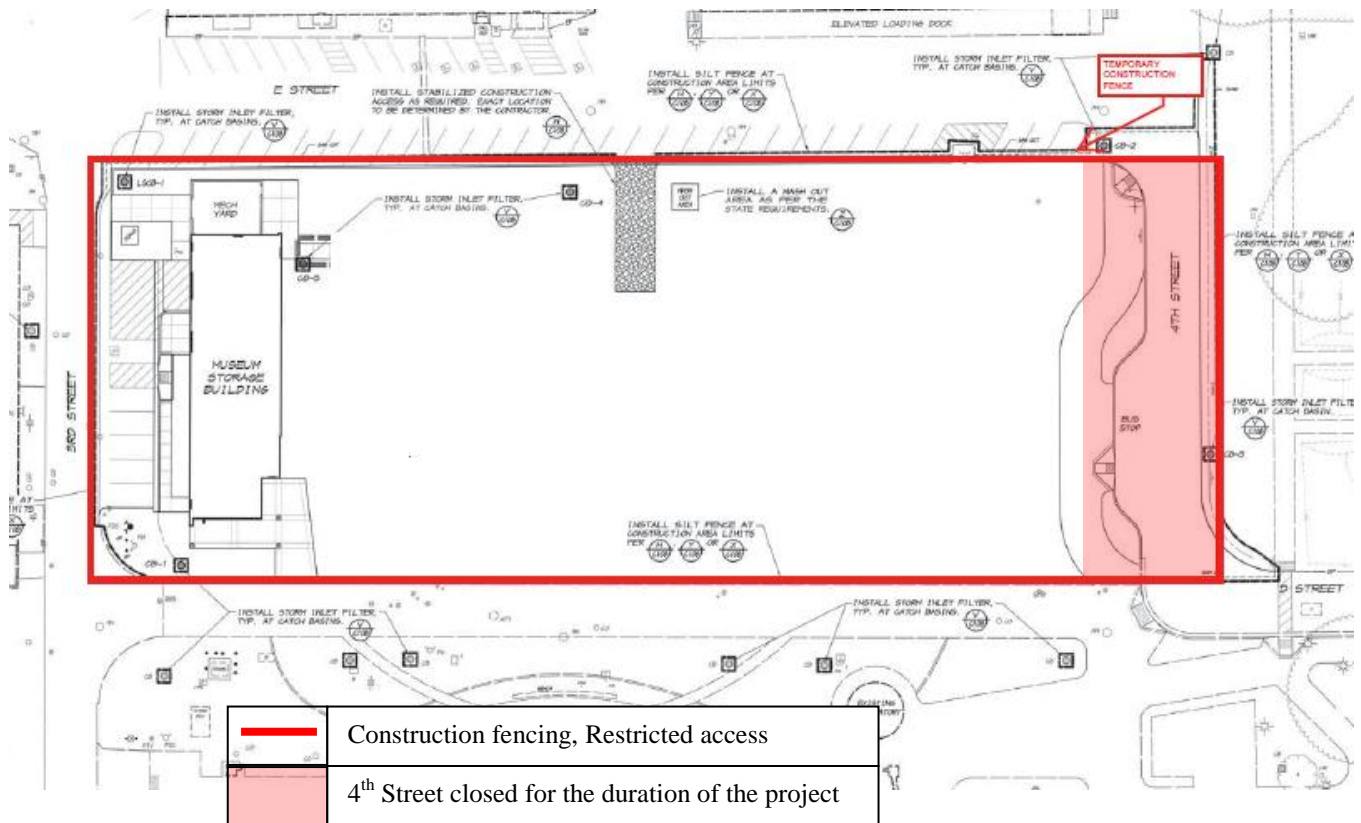
[Red]	CLOSED SIDEWALK*
[Yellow]	CLOSED PARKING LOT*
[Blue]	GATE IN FENCE
[Green]	OPEN SIDEWALK (Portions may need to close towards the end of the project for new concrete)
[Orange]	FENCE ALONG OPEN SIDEWALK
[Black]	CONSTRUCTION TRAILER
[Pink]	KITCHELL TRAILER
[White]	* Duration of the Project



## GVM EDUCATION DEMONSTRATION CENTER

**Work this week:** Installation of under slab plumbing and electrical conduits.

<b>Access:</b>	Caution at 3 <sup>rd</sup> and E Street. Partial closure at 4 <sup>th</sup> Street. See map below
<b>Noise:</b>	Moderate: Heavy equipment deliveries
<b>Parking:</b>	None
<b>Utilities:</b>	None
<b>Odors:</b>	None
<b>Dust:</b>	None



If there are any questions or concerns contact Kitchell CEM, Measure E Bond Construction Manager, located at 2201 Blue Gum Ave., Modesto CA 95358 Tel: 575-6991 Email [mkenedy@kitchell.com](mailto:mkenedy@kitchell.com)