



Measure E Bond Program MODESTO JUNIOR COLLEGE CAMPUS CONSTRUCTION UPDATE

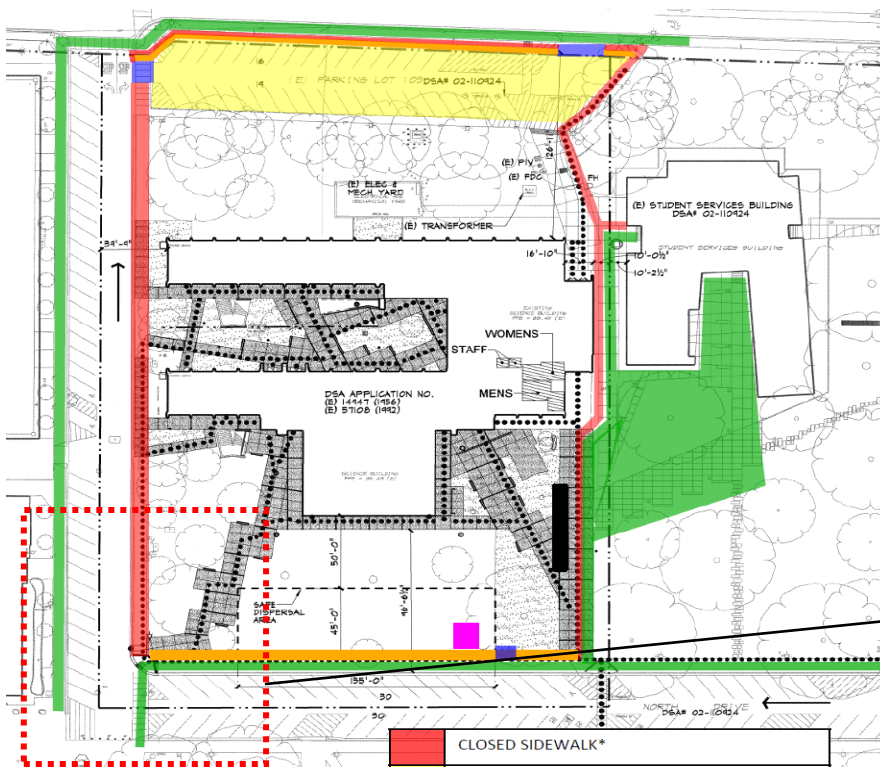


UPDATES & ACTIVITIES THAT MAY IMPACT CAMPUS OPERATION *Week of June 16, 2014*

HIGH TECH (NORTH HALL) MODERNIZATION

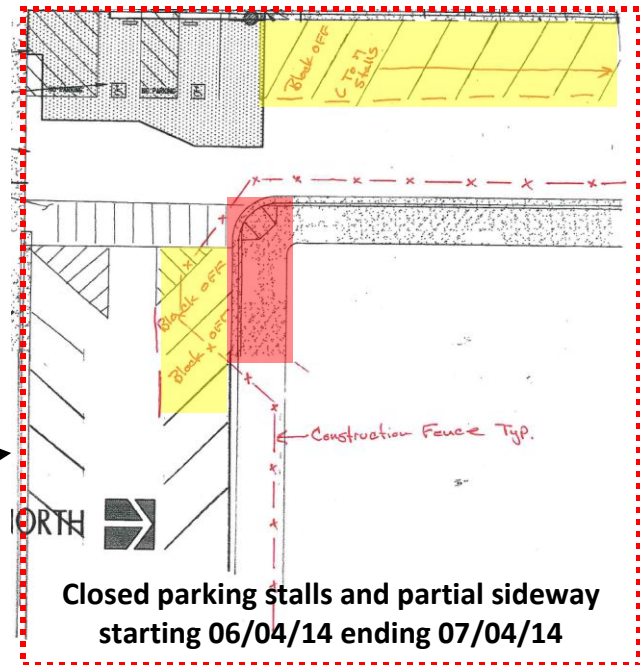
Work this week: Mechanical, electrical and plumbing rough in. Metal stud framing and installation of Densglass sheathing. Drilling dry well.

Access:	Partial closure at North Drive sidewalk
Noise:	Substantial: Drilling
Parking:	See attached map for closure.
Utilities:	None
Odors:	None
Dust:	None



**NORTH HALL
Access and Closure Map**

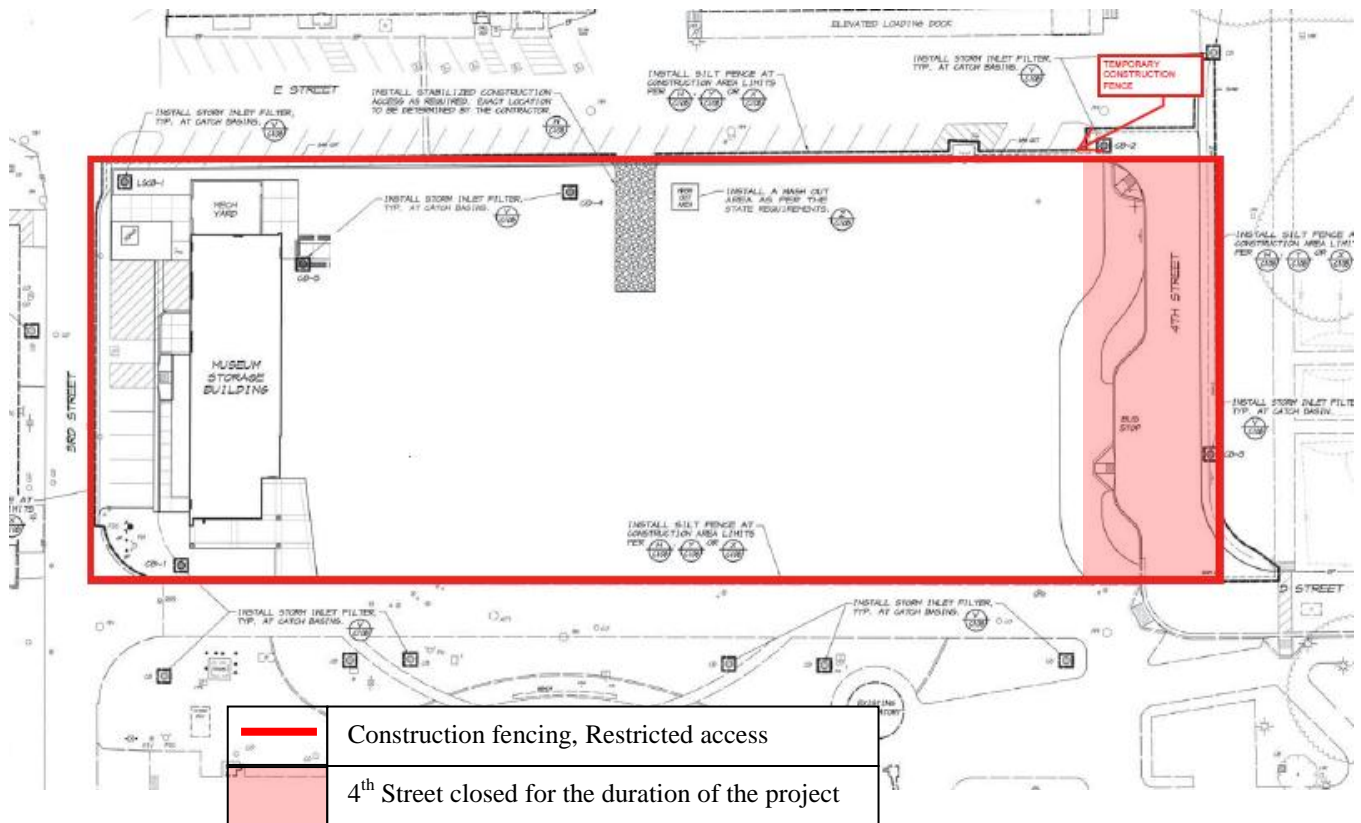
	CLOSED SIDEWALK*
	CLOSED PARKING LOT*
	GATE IN FENCE
	OPEN SIDEWALK (Portions may need to close towards the end of the project for new concrete)
	FENCE ALONG OPEN SIDEWALK
	CONSTRUCTION TRAILER
	KITCHELL TRAILER
	* Duration of the Project



GVM STORAGE BUILDING

Work this week: Pour concrete footings. Strip form work. Installation of under slab plumbing and electrical conduits.

Access:	Caution at 3 rd and E Street. Partial closure at 4 th Street. See map below
Noise:	Moderate: Heavy equipment deliveries
Parking:	None
Utilities:	None
Odors:	None
Dust:	None





ART PATIO

Work this week: Clean up and strip concrete forms.

Access:	Caution at South Drive
Noise:	Moderate: Deliveries
Parking:	None
Utilities:	None
Odors:	None
Dust:	None



.....
If there are any questions or concerns contact Kitchell CEM, Measure E Bond Construction Manager, located at
2201 Blue Gum Ave., Modesto CA 95358 Tel: 575-6991 Email mkennedy@kitchell.com

