



Measure E Bond Program MODESTO JUNIOR COLLEGE CAMPUS CONSTRUCTION UPDATE

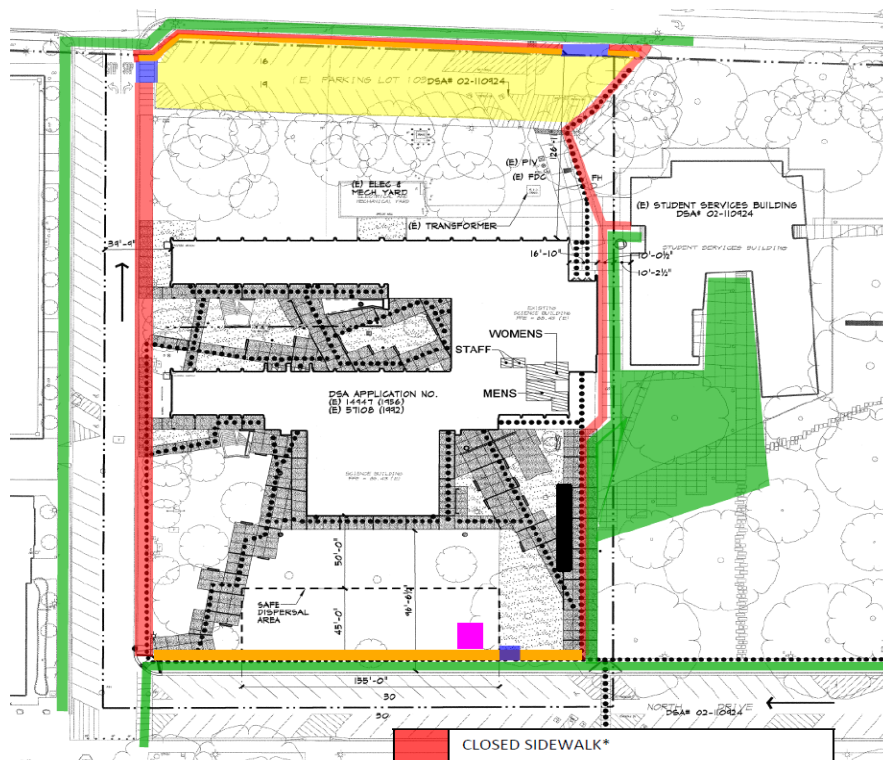


UPDATES & ACTIVITIES THAT MAY IMPACT CAMPUS OPERATION *Week of May 5, 2014*

HIGH TECH (NORTH HALL) MODERNIZATION

Work this week: Mechanical, electrical and plumbing rough in. Crane onsite for chiller delivery.

Access:	Caution at North Drive
Noise:	Moderate: equipment & deliveries
Parking:	See attached map for closure.
Utilities:	None
Odors:	None
Dust:	None



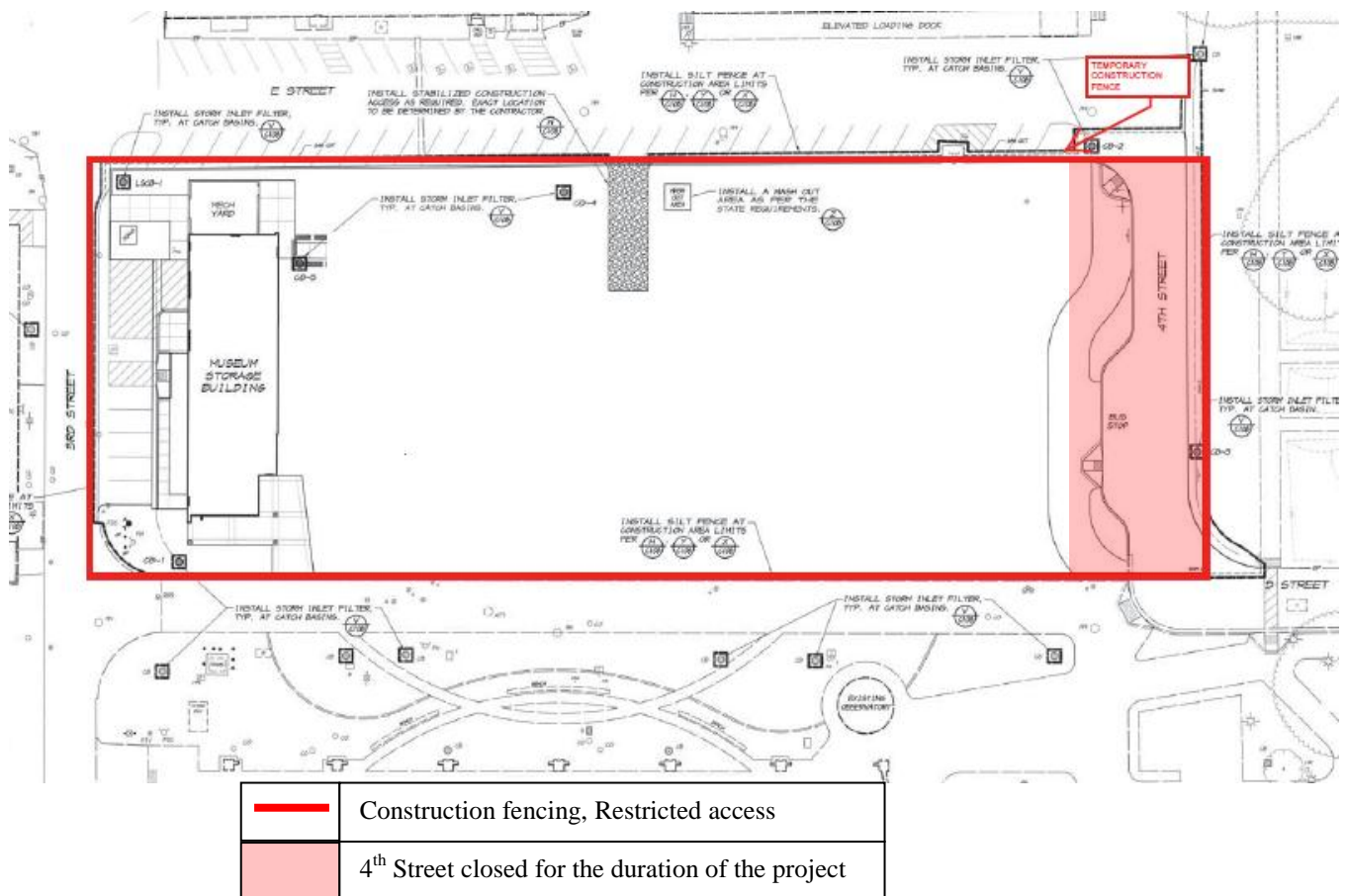
**NORTH HALL
Access and Closure Map**

	CLOSED SIDEWALK*
	CLOSED PARKING LOT*
	GATE IN FENCE
	OPEN SIDEWALK (Portions may need to close towards the end of the project for new concrete)
	FENCE ALONG OPEN SIDEWALK
	CONSTRUCTION TRAILER
	KITCHELL TRAILER
	* Duration of the Project

GVM STORAGE BUILDING

Work this week: Demolition and earthwork. Heavy equipment deliveries.

Access:	Caution at 3 rd and E Street. Partial closure at 4 th Street. See map below
Noise:	Moderate: Heavy equipment deliveries
Parking:	None
Utilities:	None
Odors:	None
Dust:	None



If there are any questions or concerns contact Kitchell CEM, Measure E Bond Construction Manager, located at 2201 Blue Gum Ave., Modesto CA 95358 Tel: 575-6991 Email mkenedy@kitchell.com