



# Measure E Bond Program MODESTO JUNIOR COLLEGE CAMPUS CONSTRUCTION UPDATE



## UPDATES & ACTIVITIES THAT MAY IMPACT CAMPUS OPERATION *Week of August 3, 2015*

### DISTRICT OFFICE BUILDING

**Work this week:** Setting forms and prepping for rebar.

**Access:** None.

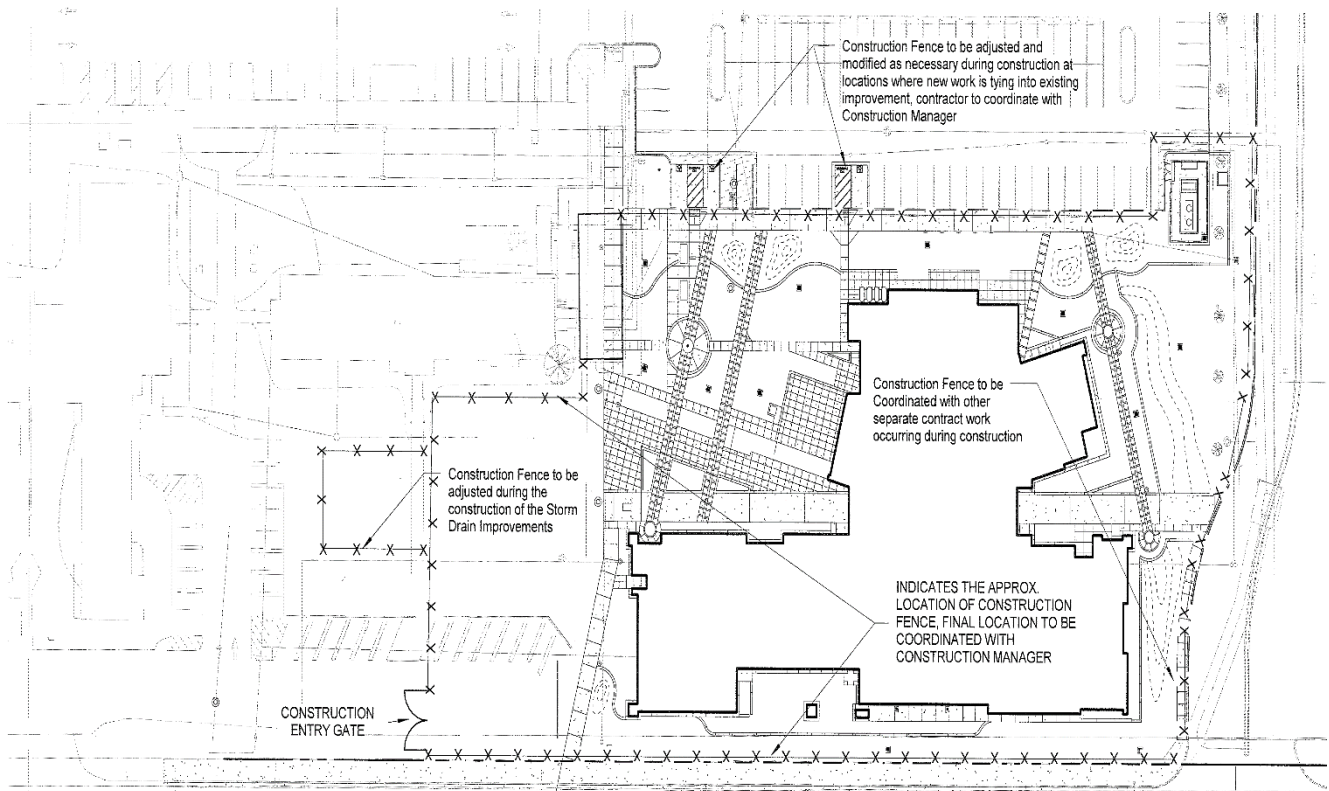
**Noise:** Moderate due to construction equipment.

**Parking:** Some parking loss for duration of project.

**Utilities:** None.

**Odors:** None

**Dust:** Minor impact.



X-X-X

Construction fencing, Restricted access



# Measure E Bond Program MODESTO JUNIOR COLLEGE CAMPUS CONSTRUCTION UPDATE Page 2 of 4

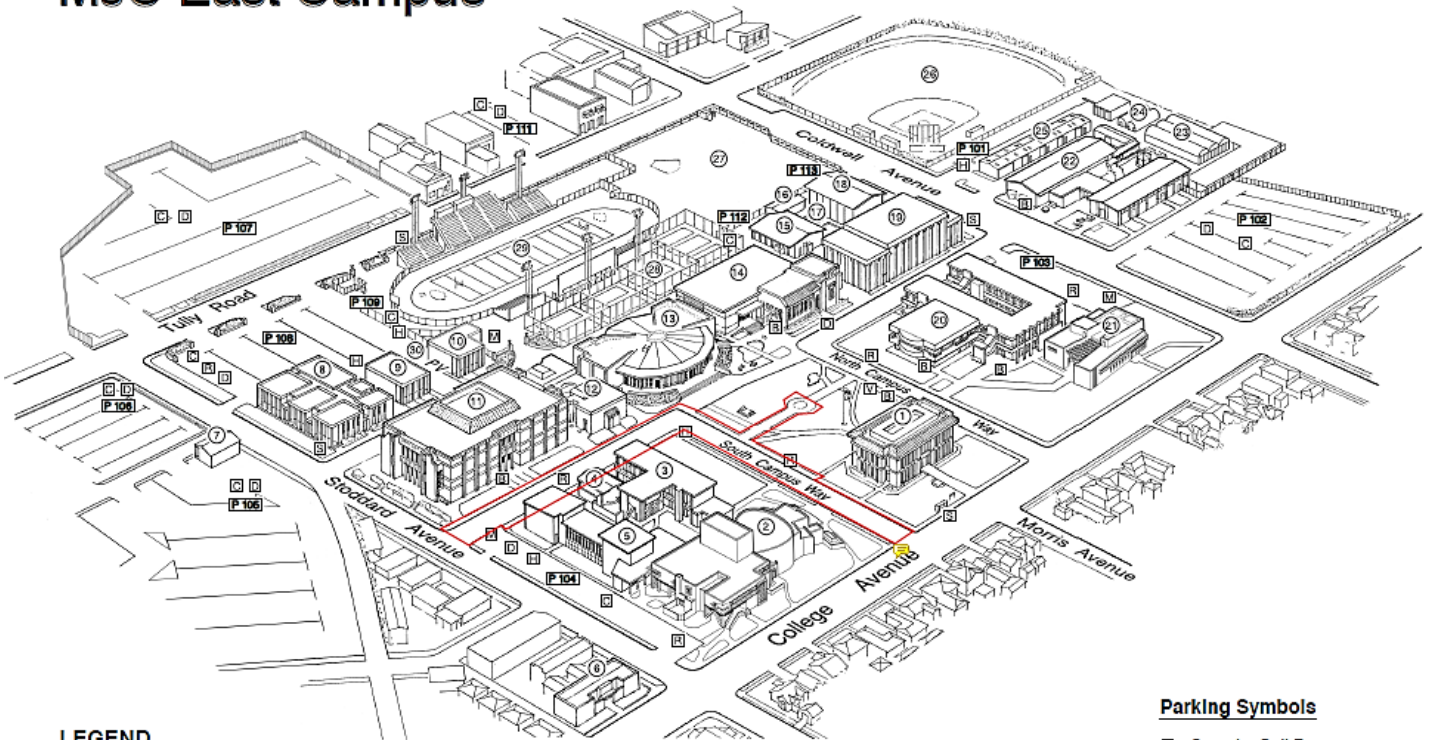
## EAST CAMPUS ROADS – SOUTH DRIVE

**Work this week:** Pave road.

<b>Access:</b>	No access to South Drive for duration of project.
<b>Noise:</b>	Moderate due to construction equipment.
<b>Parking:</b>	No parking along South Drive for duration of project.
<b>Utilities:</b>	None.
<b>Odors:</b>	None.
<b>Dust:</b>	Minor from construction traffic.



## MJC East Campus



### LEGEND

1 Administration (Morris Memorial)	7 Facilities Operations	15 Physical Education- Men	23 Greenhouse
2 Performing and Media Arts Center	8 Electronics/ Computer Science	16 Physical Education Offices	24 Propagation House
3 Art	9 Journalism	17 Swimming Pool	25 Ag Storage
4 Art Gallery	10 Classroom Annex	18 Physical Education- Women	26 Athletic Field #2
5 Music	11 Founders' Hall	19 Gymnasium	27 Athletic Field #1
6 Great Valley Museum	12 Forum	20 Science	28 Tennis Courts
	13 Student Center	21 Student Services	29 Stadium
	14 Learning Resource Center/ Library	22 Agriculture	30 Pirates' Village

### Parking Symbols

☒	Security Call Box
P	Parking 101-113
Ⓜ	Parking Dispenser
♿	Disabled Parking
🏍	Motorcycle Parking
🅇	Reserved Parking
👤	Visitor Parking
🚲	Bicycle Parking
☀	Prime Shine - Pirate Express Shuttle

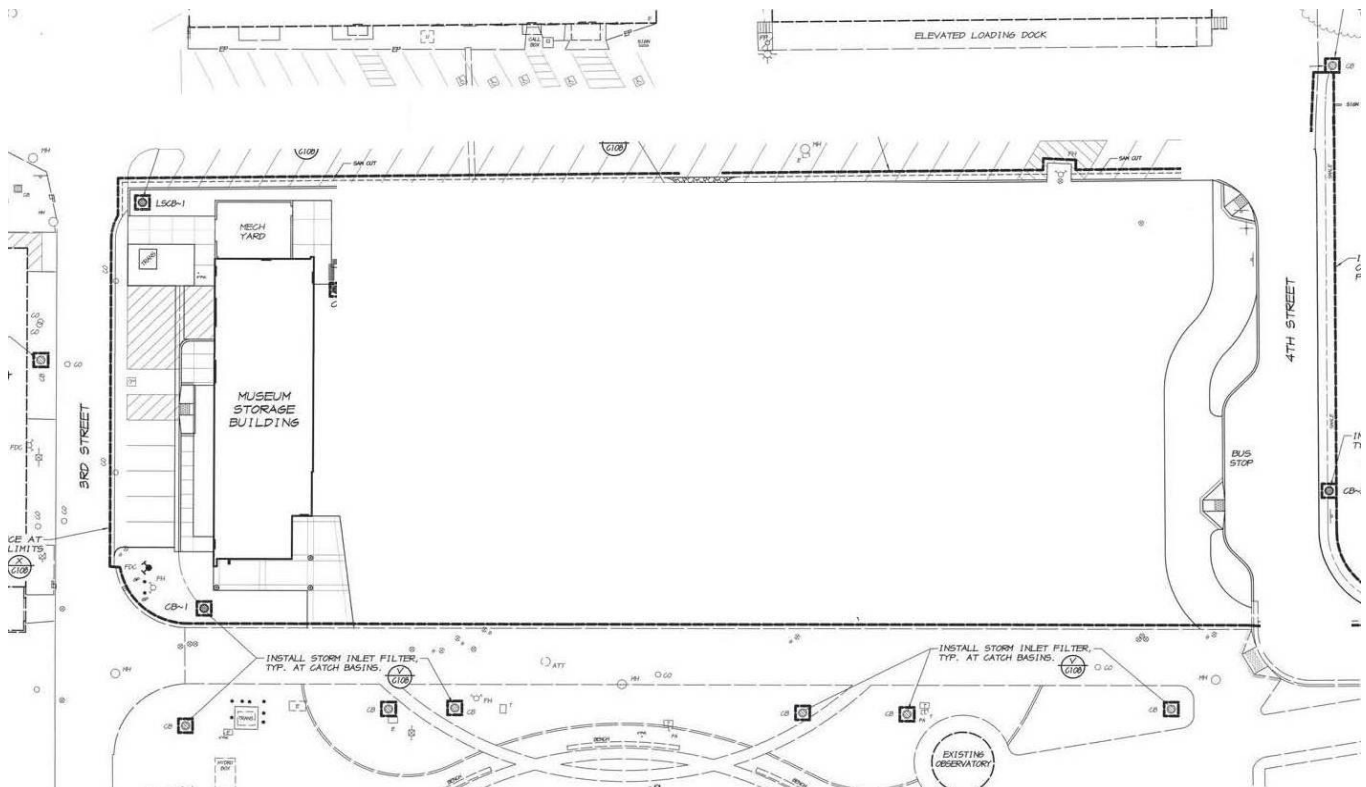




## GVM EDUCATION DEMONSTRATION CENTER

**Work this week:** None. Project Complete.

**Access:** None  
**Noise:** None  
**Parking:** None  
**Utilities:** None  
**Odors:** None  
**Dust:** None

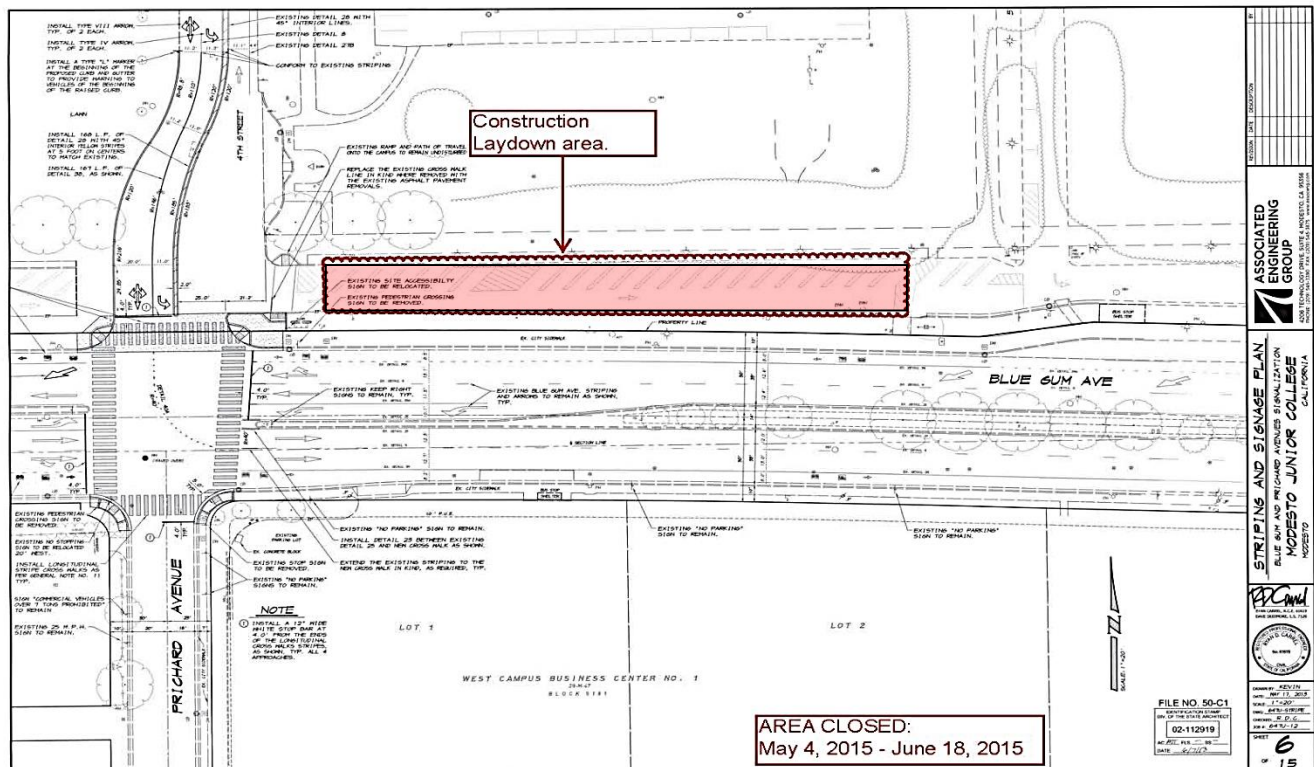



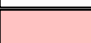
	Construction fencing, Restricted access
	4 <sup>th</sup> Street closed for the duration of the project

## BLUE GUM AVE & PRICHARD AVE SIGNALIZATION

**Work this week:** Signal became operational on 7/28.  
Project Complete

**Access:** None.  
**Noise:** None.  
**Parking:** None  
**Utilities:** None  
**Odors:** None  
**Dust:** None



	Construction fencing, Restricted access
	Street closed for the duration of the project

If there are any questions or concerns contact Kitchell CEM, Measure E Bond Construction Manager, located at 2201 Blue Gum Ave., Modesto CA 95358 Tel: 575-6991 Email [mkenney@kitchell.com](mailto:mkenney@kitchell.com)