



# Measure E Bond Program MODESTO JUNIOR COLLEGE CAMPUS CONSTRUCTION UPDATE

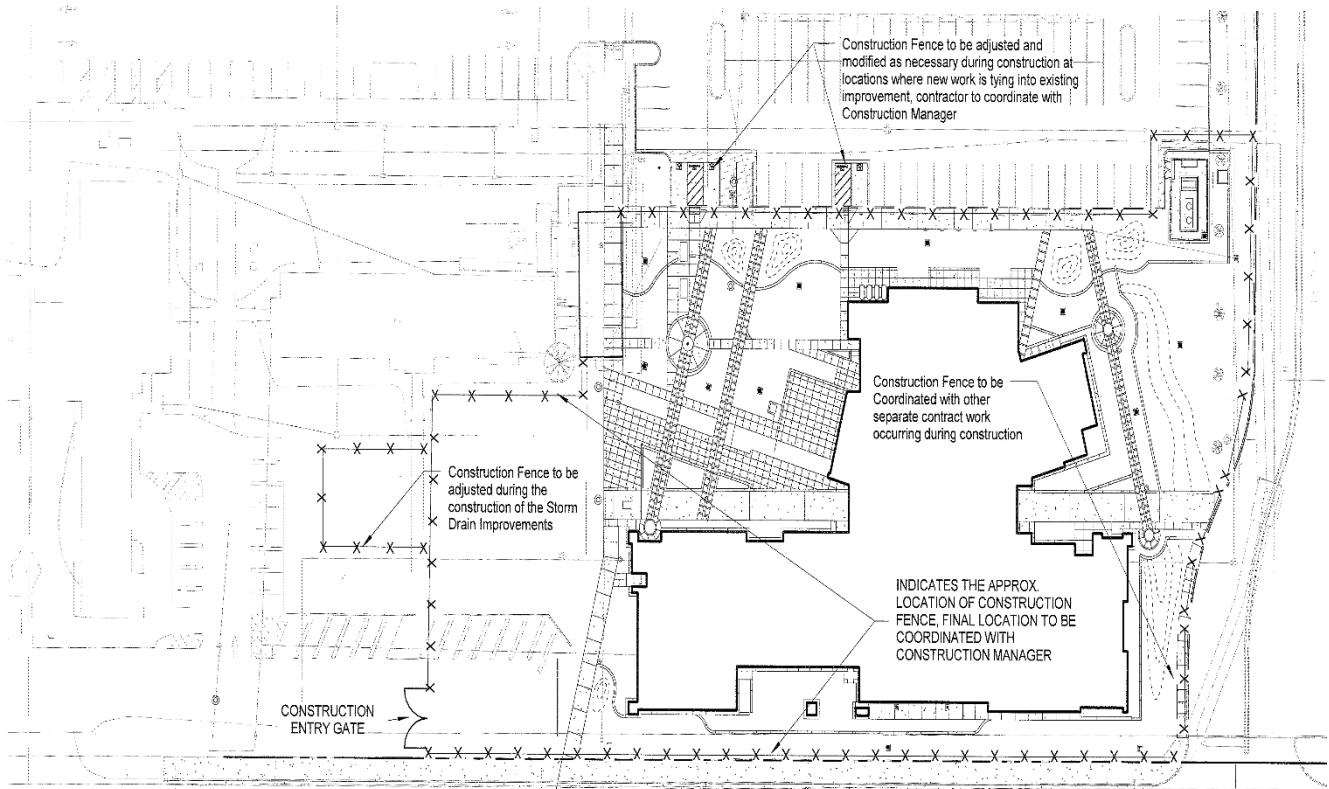


## UPDATES & ACTIVITIES THAT MAY IMPACT CAMPUS OPERATION *Week of July 13, 2015*

### DISTRICT OFFICE BUILDING

**Work this week:** Continue footing excavation and footing rebar installation. Pour concrete footings.

<b>Access:</b>	None.
<b>Noise:</b>	Concrete trucks on site on June 26 all day.
<b>Parking:</b>	Some parking loss for duration of project.
<b>Utilities:</b>	None.
<b>Odors:</b>	None
<b>Dust:</b>	Minor impact.



X-X-X

Construction fencing, Restricted access



# Measure E Bond Program MODESTO JUNIOR COLLEGE CAMPUS CONSTRUCTION UPDATE Page 2 of 4

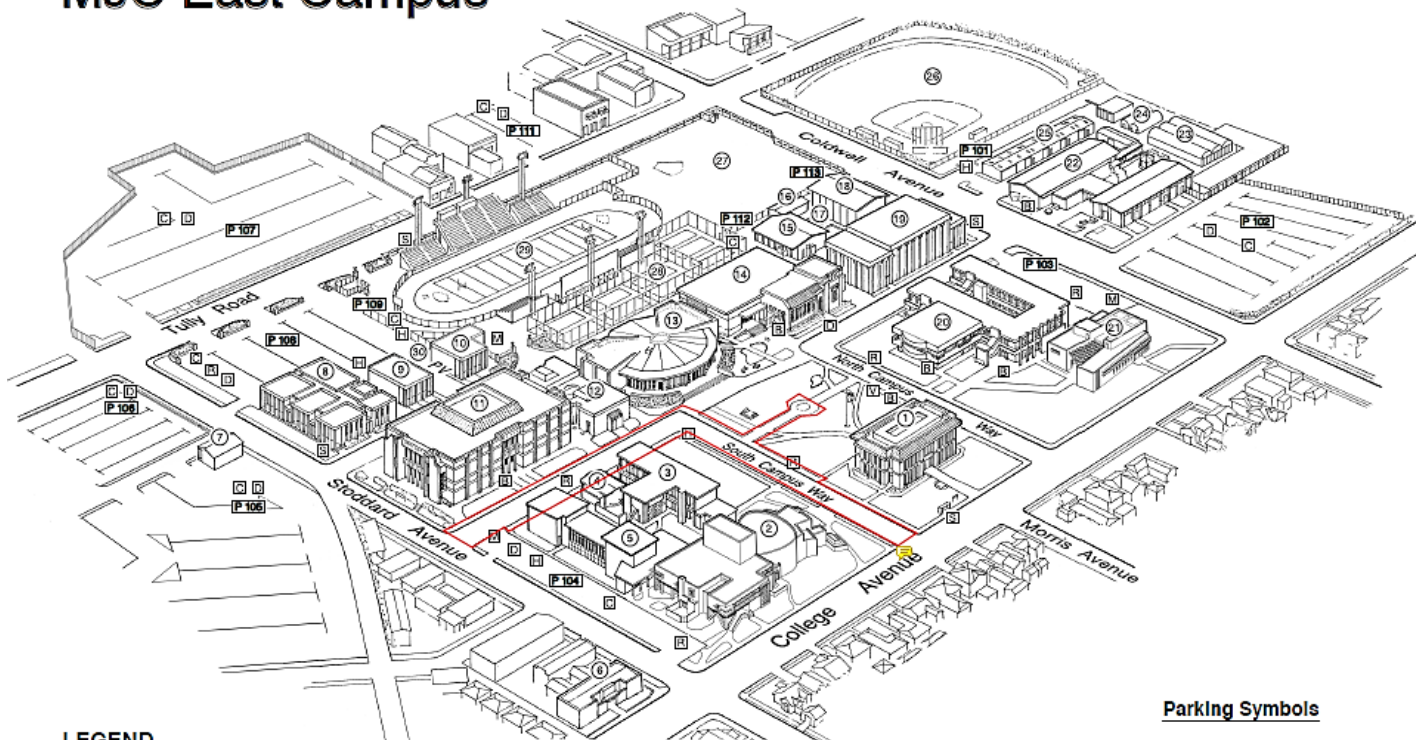
## EAST CAMPUS ROADS - SOUTH DRIVE

**Work this week:** Mobilize and demolish old road and sidewalks.

<b>Access:</b>	No access to South Drive for duration of project.
<b>Noise:</b>	Moderate/ Equipment.
<b>Parking:</b>	No parking along South Drive for duration of project.
<b>Utilities:</b>	None.
<b>Odors:</b>	None.
<b>Dust:</b>	Minor from construction traffic.



## MJC East Campus



### LEGEND

- |                                       |   |                               |                      |
|---------------------------------------|---|-------------------------------|----------------------|
| 1 Administration<br>(Morris Memorial) | 7 Facilities Operations                 | 15 Physical Education- Men    | 23 Greenhouse        |
| 2 Performing and<br>Media Arts Center | 8 Electronics/ Computer Science         | 16 Physical Education Offices | 24 Propagation House |
| 3 Art                                 | 9 Journalism                            | 17 Swimming Pool              | 25 Ag Storage        |
| 4 Art Gallery                         | 10 Classroom Annex                      | 18 Physical Education- Women  | 26 Athletic Field #2 |
| 5 Music                               | 11 Founders' Hall                       | 19 Gymnasium                  | 27 Athletic Field #1 |
| 6 Great Valley Museum                 | 12 Forum                                | 20 Science                    | 28 Tennis Courts     |
|                                       | 13 Student Center                       | 21 Student Services           | 29 Stadium           |
|                                       | 14 Learning Resource Center/<br>Library | 22 Agriculture                | 30 Pirates' Village  |

### Parking Symbols

- ☒ Security Call Box
- ☐ Parking 101-113
- ☐ Parking Dispenser
- ☐ Disabled Parking
- ☐ Motorcycle Parking
- ☐ Reserved Parking
- ☐ Visitor Parking
- ☐ Bicycle Parking
- ☐ Prime Shine -  
Pirate Express Shuttle



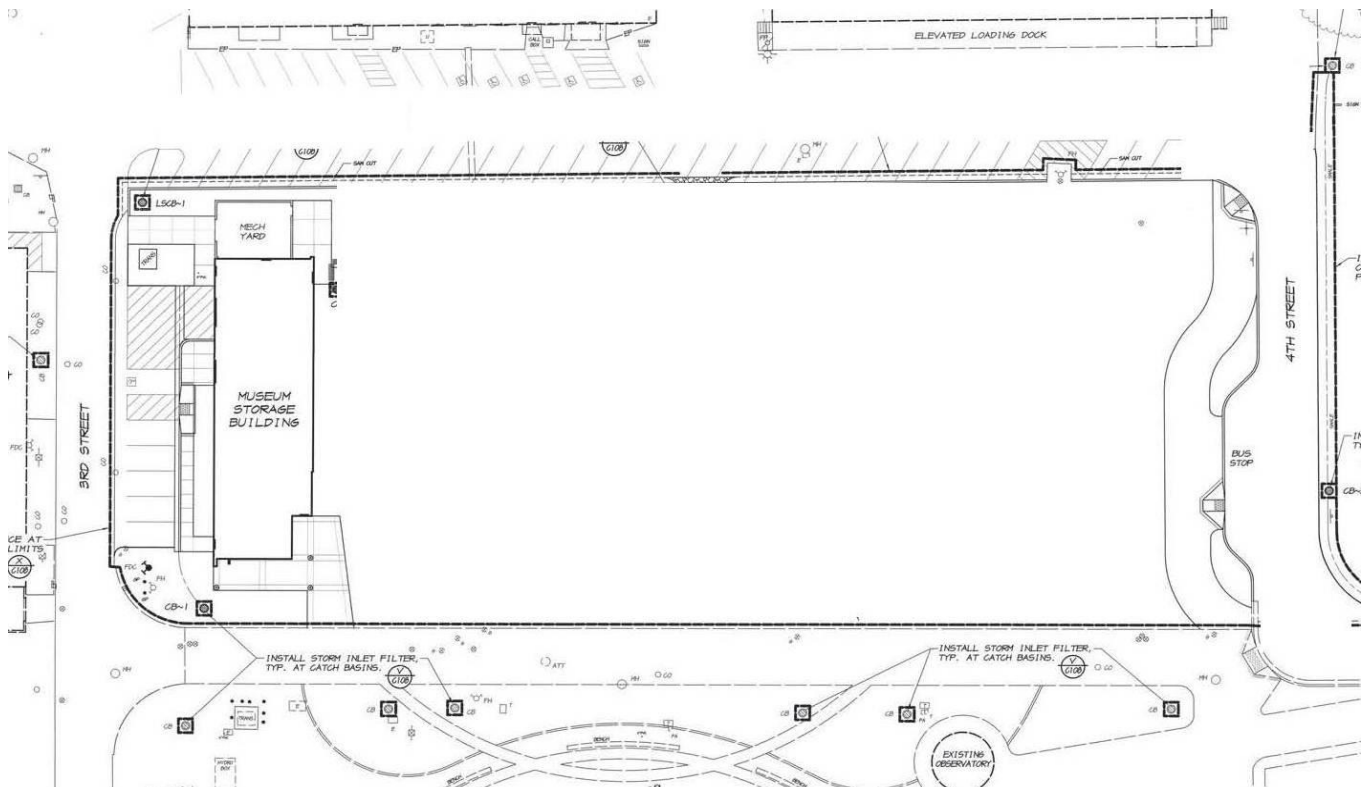



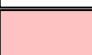
# Measure E Bond Program MODESTO JUNIOR COLLEGE CAMPUS CONSTRUCTION UPDATE Page 3 of 4

## GVM EDUCATION DEMONSTRATION CENTER

**Work this week:** Contractor working on punchlist items.

**Access:** None  
**Noise:** Minimal.  
**Parking:** None  
**Utilities:** None  
**Odors:** None  
**Dust:** None

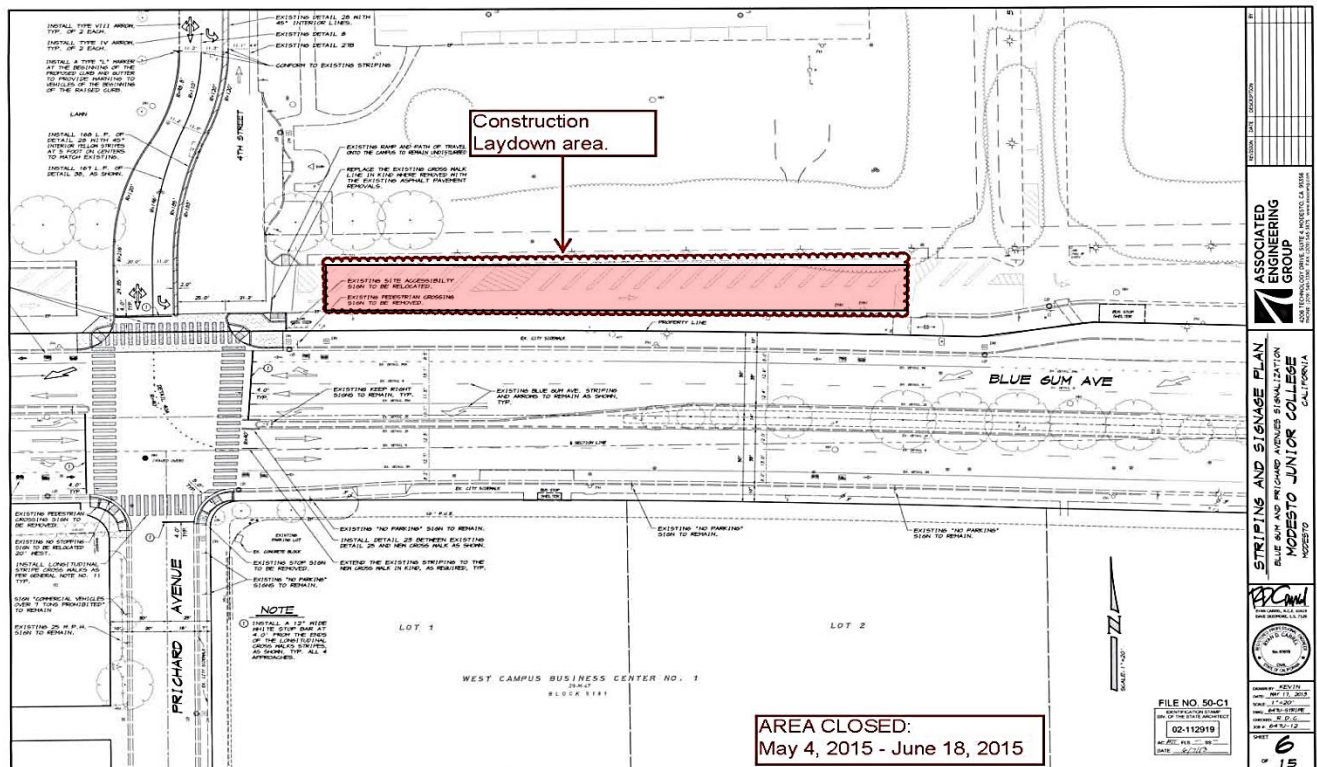



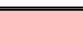
	Construction fencing, Restricted access
	4 <sup>th</sup> Street closed for the duration of the project

## BLUE GUM AVE & PRICHARD AVE SIGNALIZATION

**Work this week:** Modesto Irrigation District scheduled to install new electrical service.

<b>Access:</b>	Caution at Blue Gum Ave. and 4 <sup>th</sup> Street Intersection.
<b>Noise:</b>	Low.
<b>Parking:</b>	"Construction laydown area to be removed and reopen to public.
<b>Utilities:</b>	None
<b>Odors:</b>	None
<b>Dust:</b>	None



	Construction fencing, Restricted access
	Street closed for the duration of the project

If there are any questions or concerns contact Kitchell CEM, Measure E Bond Construction Manager, located at 2201 Blue Gum Ave., Modesto CA 95358 Tel: 575-6991 Email [mkenney@kitchell.com](mailto:mkenney@kitchell.com)