

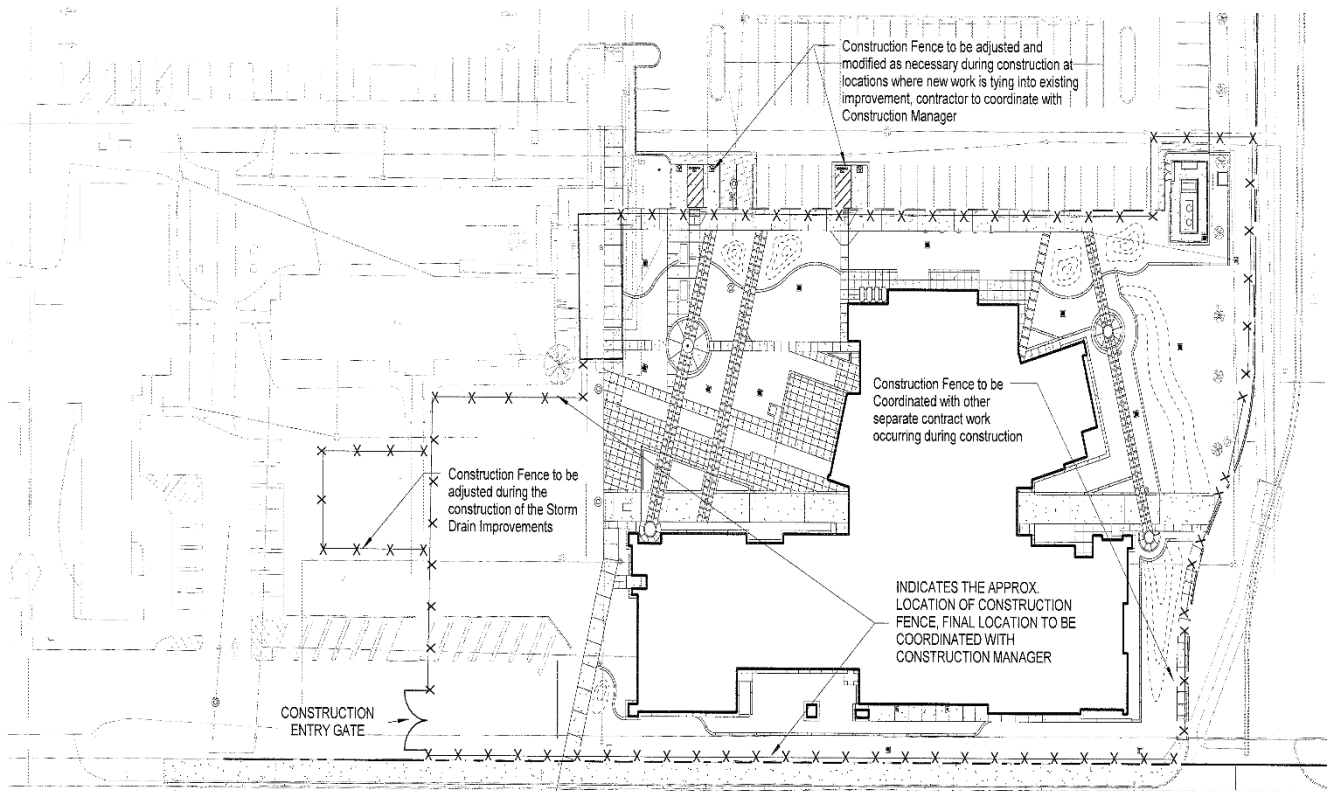


**UPDATES & ACTIVITIES THAT MAY IMPACT
CAMPUS OPERATION**
Week of June 29, 2015

DISTRICT OFFICE BUILDING

Work this week: Continue footing excavation and footing rebar installation. Pour concrete footings.

Access:	None.
Noise:	Construction trucks in and out of the site.
Parking:	Some parking loss for duration of project.
Utilities:	None.
Odors:	None
Dust:	Minor impact.



X-X-X

Construction fencing, Restricted access



Measure E Bond Program MODESTO JUNIOR COLLEGE CAMPUS CONSTRUCTION UPDATE Page 2 of 4

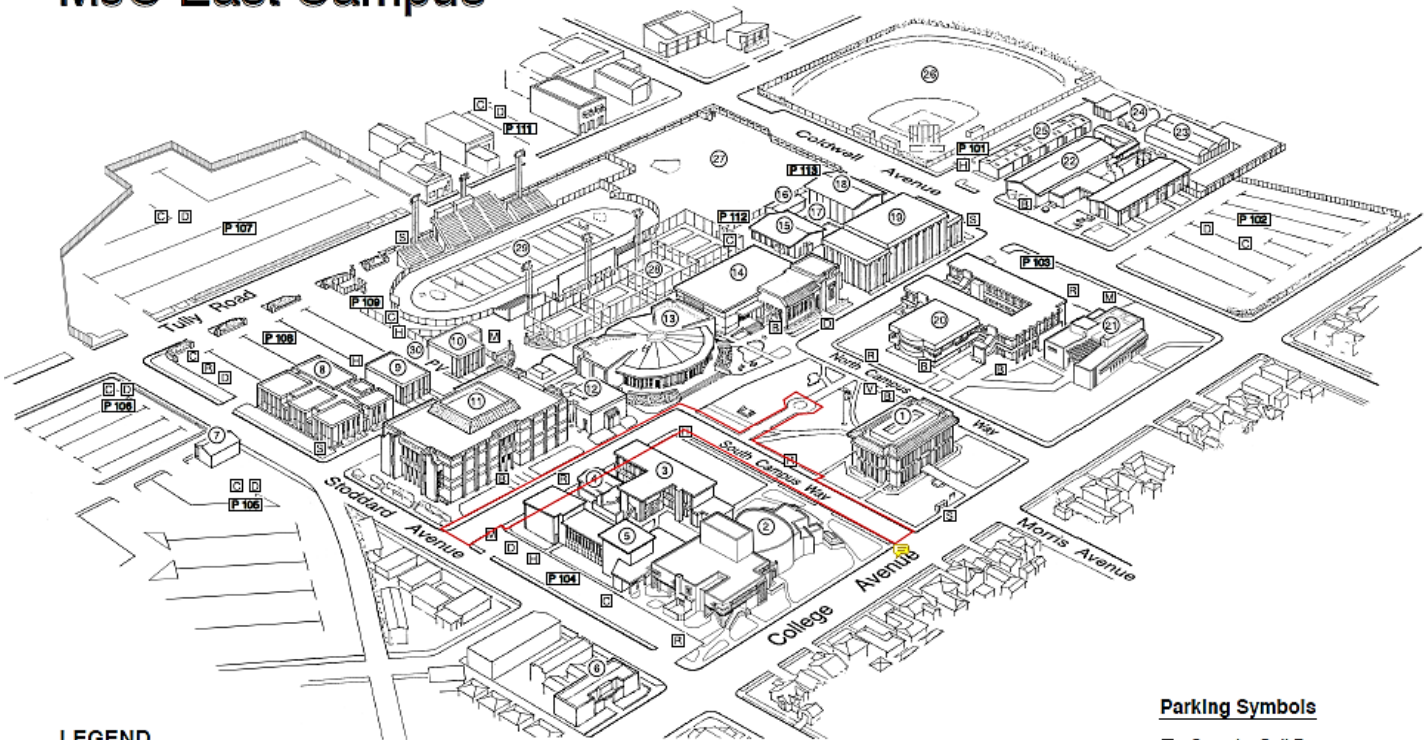
EAST CAMPUS ROADS – SOUTH DRIVE

Work this week: Mobilize and demolish old road and sidewalks.

Access:	No access to South Drive for duration of project.
Noise:	Moderate/ Equipment.
Parking:	No parking along South Drive for duration of project.
Utilities:	None.
Odors:	None.
Dust:	Minor from construction traffic.



MJC East Campus



LEGEND

1 Administration (Morris Memorial)	7 Facilities Operations	15 Physical Education- Men	23 Greenhouse
2 Performing and Media Arts Center	8 Electronics/ Computer Science	16 Physical Education Offices	24 Propagation House
3 Art	9 Journalism	17 Swimming Pool	25 Ag Storage
4 Art Gallery	10 Classroom Annex	18 Physical Education- Women	26 Athletic Field #2
5 Music	11 Founders' Hall	19 Gymnasium	27 Athletic Field #1
6 Great Valley Museum	12 Forum	20 Science	28 Tennis Courts
	13 Student Center	21 Student Services	29 Stadium
	14 Learning Resource Center/ Library	22 Agriculture	30 Pirates' Village

Parking Symbols

☒	Security Call Box
P	Parking 101-113
Ⓟ	Parking Dispenser
♿	Disabled Parking
🏍	Motorcycle Parking
🅇	Reserved Parking
🅈	Visitor Parking
🚲	Bicycle Parking
☀	Prime Shine - Pirate Express Shuttle

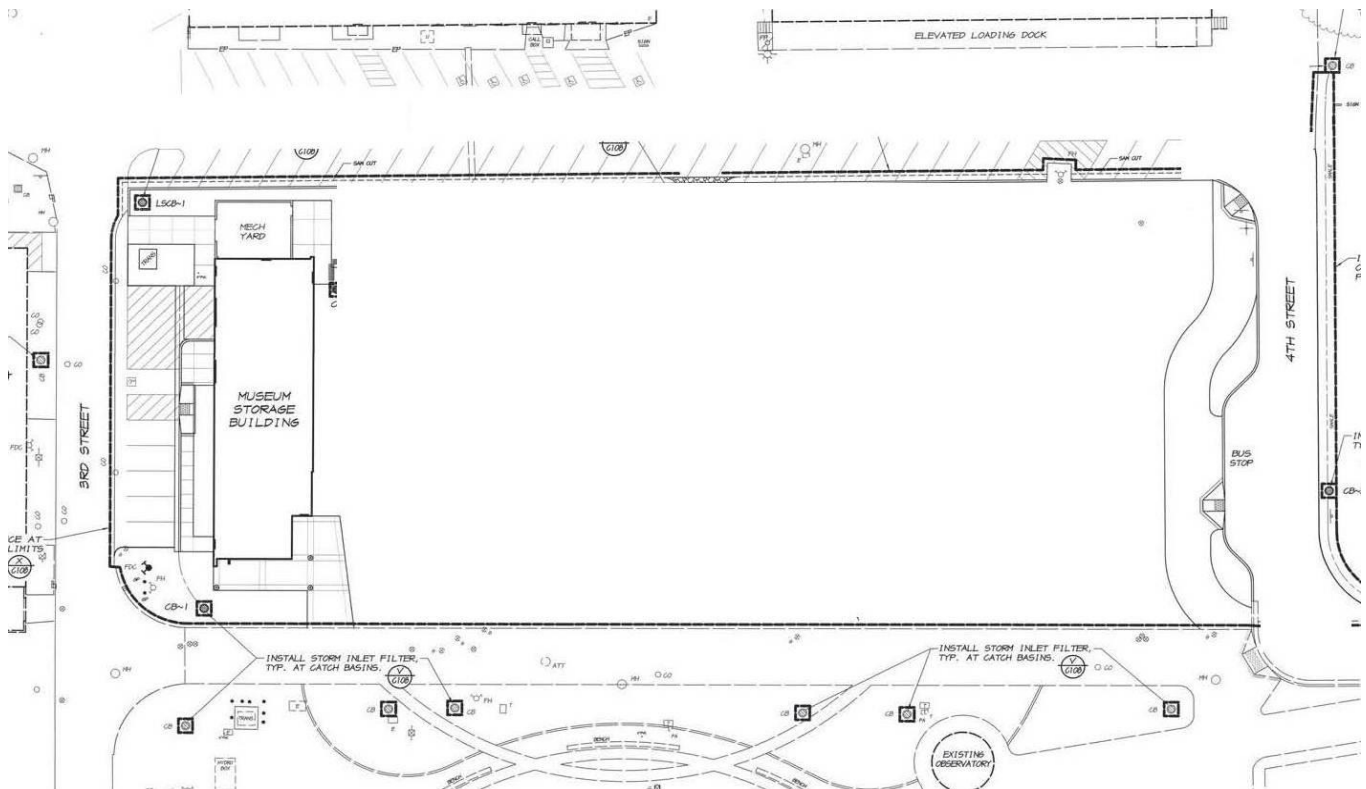




Measure E Bond Program MODESTO JUNIOR COLLEGE CAMPUS CONSTRUCTION UPDATE Page 3 of 4

GVM EDUCATION DEMONSTRATION CENTER

Work this week: Contractor working on punchlist items.

Access: None
Noise: Minimal.
Parking: None
Utilities: None
Odors: None
Dust: None

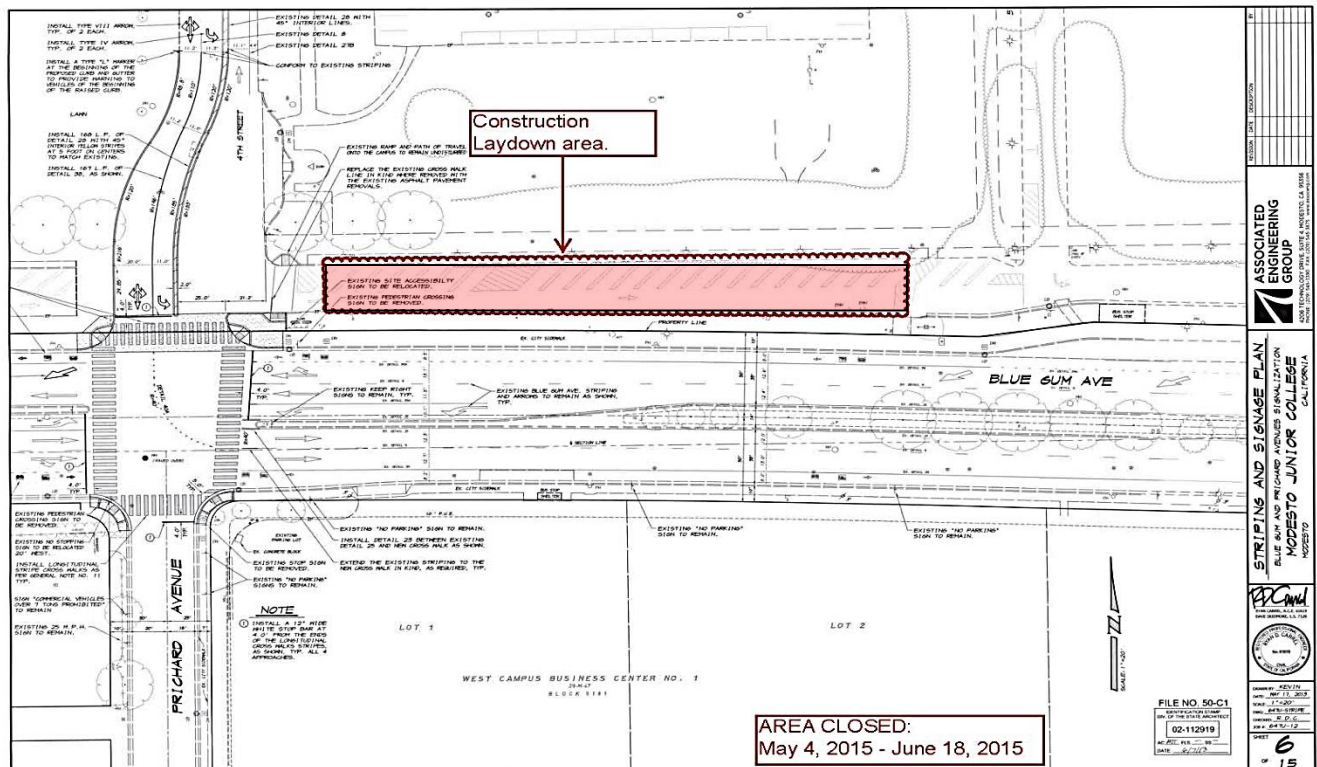



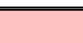
	Construction fencing, Restricted access
	4 th Street closed for the duration of the project

BLUE GUM AVE & PRICHARD AVE SIGNALIZATION

Work this week: Clean up construction laydown area and reopen for vehicle access. Traffic signals will not be operational until July 3, 2015.

Access:	Caution at Blue Gum Ave. and 4 th Street Intersection.
Noise:	Low.
Parking:	"Construction laydown area to be removed and reopen to public.
Utilities:	None
Odors:	None
Dust:	None



	Construction fencing, Restricted access
	Street closed for the duration of the project

If there are any questions or concerns contact Kitchell CEM, Measure E Bond Construction Manager, located at 2201 Blue Gum Ave., Modesto CA 95358 Tel: 575-6991 Email mkenney@kitchell.com