



Measure E Bond Program MODESTO JUNIOR COLLEGE CAMPUS CONSTRUCTION UPDATE

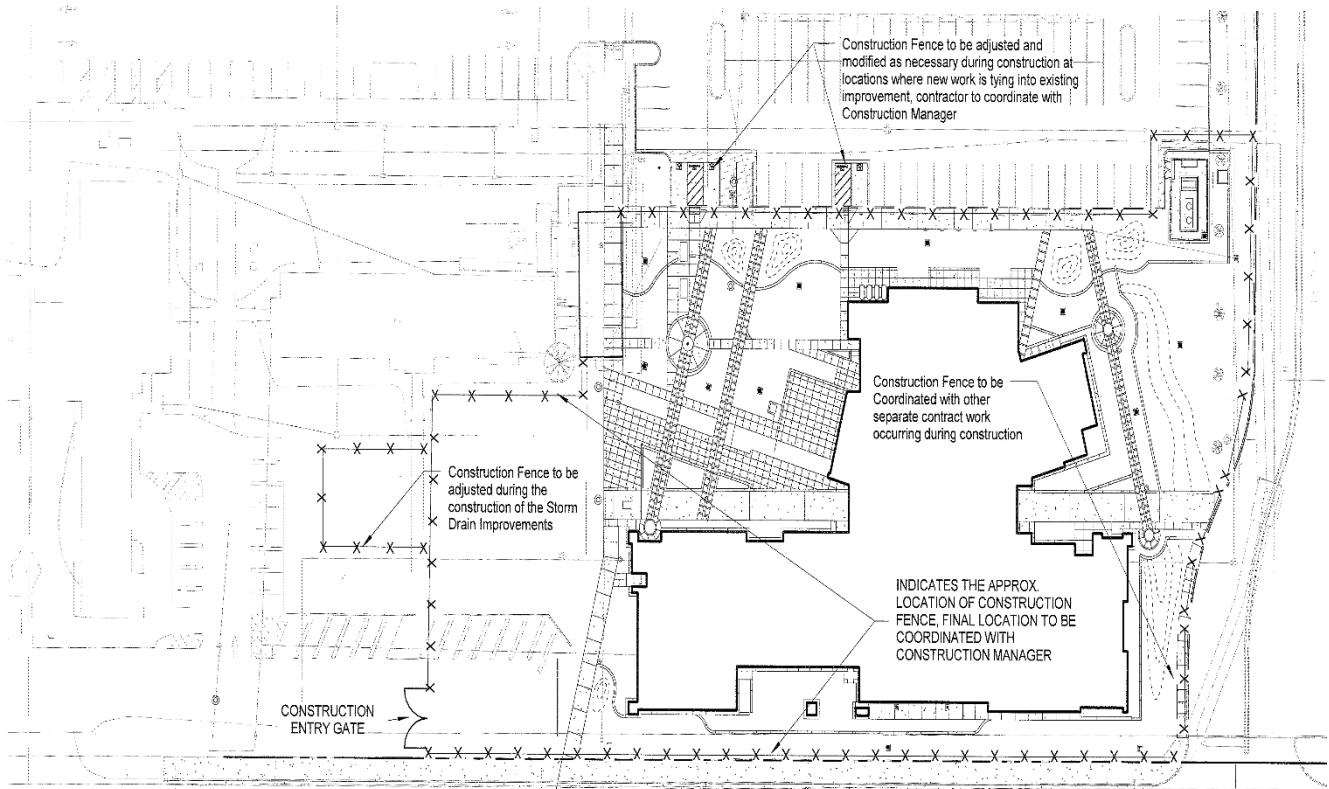


UPDATES & ACTIVITIES THAT MAY IMPACT CAMPUS OPERATION *Week of June 22, 2015*

DISTRICT OFFICE BUILDING

Work this week: Continue footing excavation and footing rebar installation. Pour concrete footings.

Access:	None.
Noise:	Concrete trucks on site on June 26 all day.
Parking:	Some parking loss for duration of project.
Utilities:	None.
Odors:	None
Dust:	Minor impact.



X-X-X

Construction fencing, Restricted access



Measure E Bond Program MODESTO JUNIOR COLLEGE CAMPUS CONSTRUCTION UPDATE Page 2 of 4

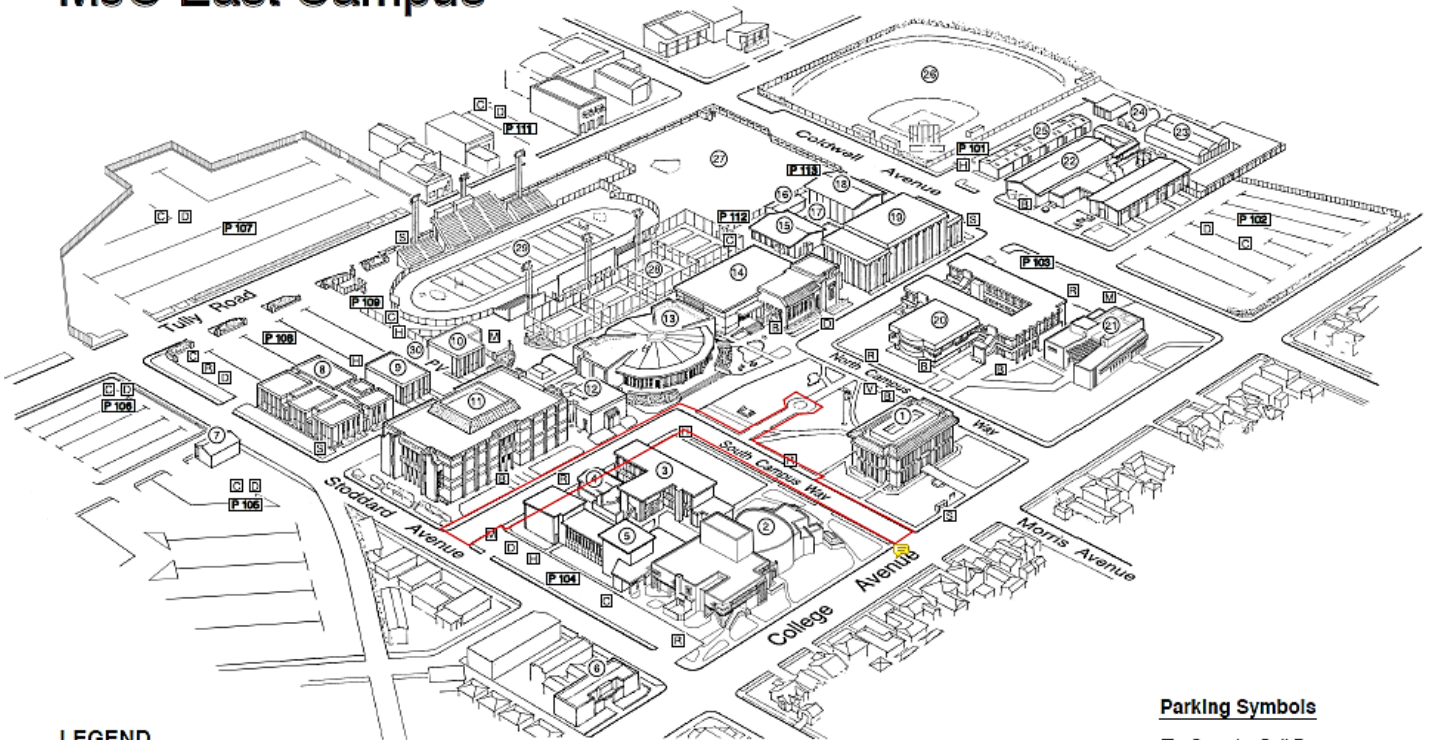
EAST CAMPUS ROADS – SOUTH DRIVE

Work this week: Mobilize and demolish old road and sidewalks.

Access:	No access to South Drive for duration of project.
Noise:	Moderate/ Equipment.
Parking:	No parking along South Drive for duration of project.
Utilities:	None.
Odors:	None.
Dust:	Minor from construction traffic.



MJC East Campus



LEGEND

- | | | | |
|---------------------------------------|---|-------------------------------|----------------------|
| 1 Administration
(Morris Memorial) | 7 Facilities Operations | 15 Physical Education- Men | 23 Greenhouse |
| 2 Performing and
Media Arts Center | 8 Electronics/ Computer Science | 16 Physical Education Offices | 24 Propagation House |
| 3 Art | 9 Journalism | 17 Swimming Pool | 25 Ag Storage |
| 4 Art Gallery | 10 Classroom Annex | 18 Physical Education- Women | 26 Athletic Field #2 |
| 5 Music | 11 Founders' Hall | 19 Gymnasium | 27 Athletic Field #1 |
| 6 Great Valley Museum | 12 Forum | 20 Science | 28 Tennis Courts |
| | 13 Student Center | 21 Student Services | 29 Stadium |
| | 14 Learning Resource Center/
Library | 22 Agriculture | 30 Pirates' Village |

Parking Symbols

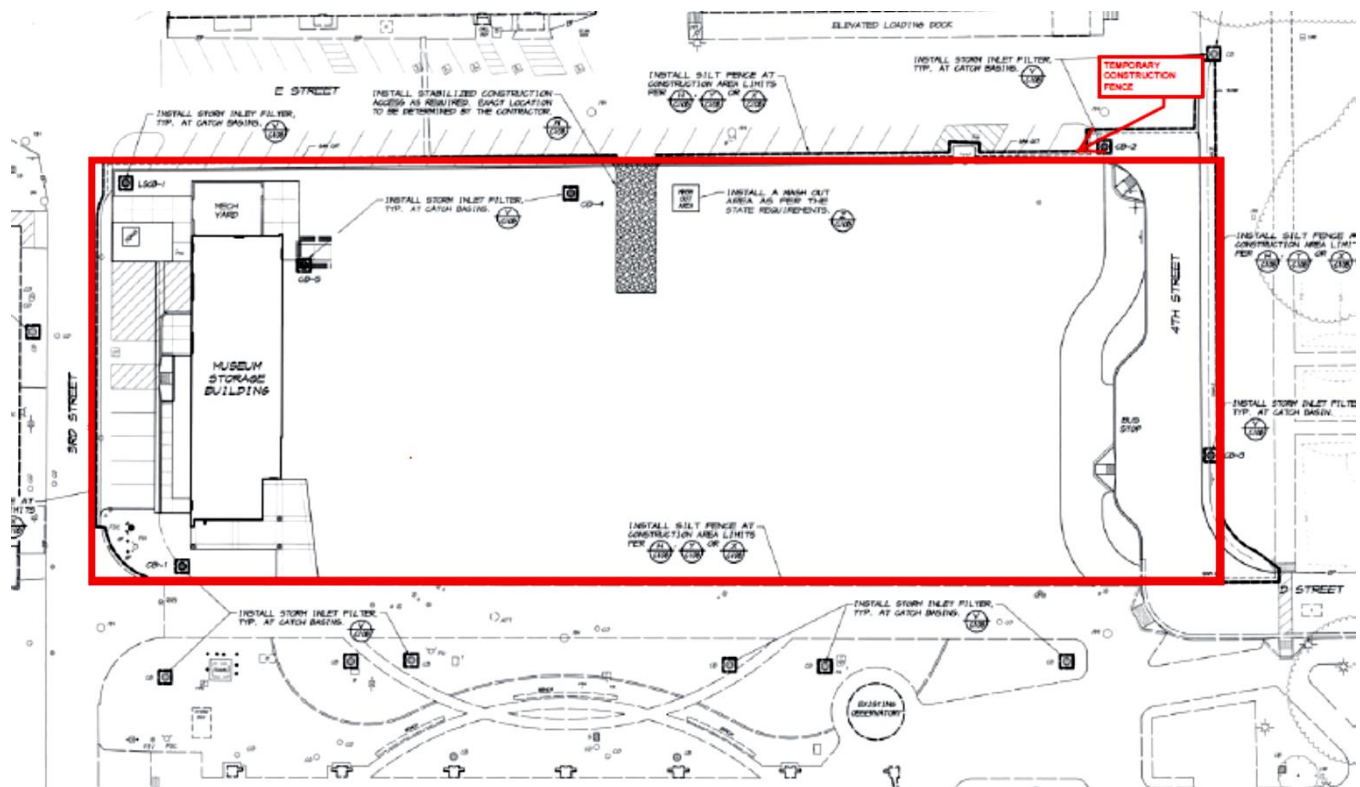
- ☒ Security Call Box
- ☐ Parking 101-113
- ☐ Parking Dispenser
- ☐ Disabled Parking
- ☐ Motorcycle Parking
- ☐ Reserved Parking
- ☐ Visitor Parking
- ☐ Bicycle Parking
- ☐ Prime Shine -
Pirate Express Shuttle



GVM EDUCATION DEMONSTRATION CENTER

Work this week: Conduct punchlist walks. Contractor working on punchlist items.

Access:	Caution at 3 rd and E Street. 4 th street access to reopen. See map below.
Noise:	Moderate: Heavy equipment deliveries
Parking:	None
Utilities:	None
Odors:	None
Dust:	None

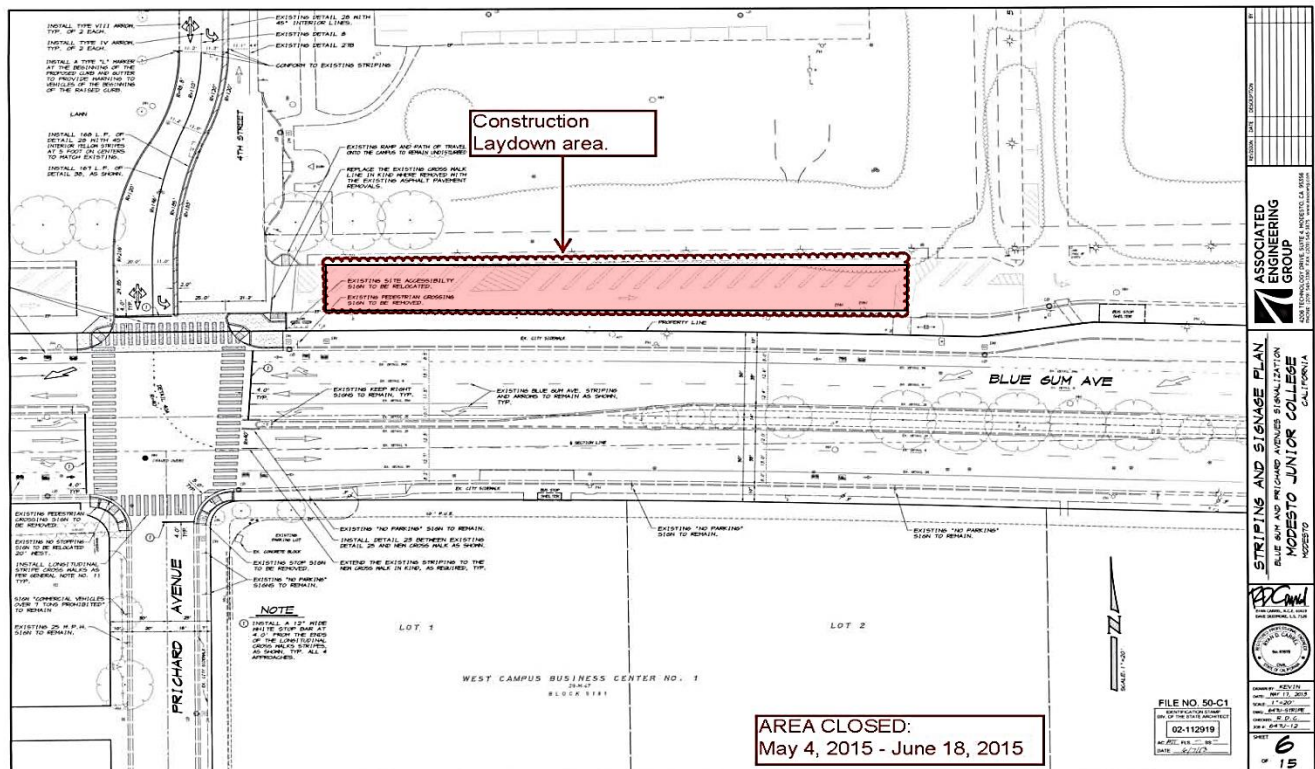



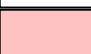
	Construction fencing, Restricted access
	4 th Street closed for the duration of the project

BLUE GUM AVE & PRICHARD AVE SIGNALIZATION

Work this week: Clean up construction laydown area and reopen for vehicle access. Traffic signals will not be operational until July 3, 2015.

Access:	Caution at Blue Gum Ave. and 4 th Street Intersection.
Noise:	Low.
Parking:	"Construction laydown area to be removed and reopen to public.
Utilities:	None
Odors:	None
Dust:	None



	Construction fencing, Restricted access
	Street closed for the duration of the project

If there are any questions or concerns contact Kitchell CEM, Measure E Bond Construction Manager, located at 2201 Blue Gum Ave., Modesto CA 95358 Tel: 575-6991 Email mkenney@kitchell.com