



# Measure E Bond Program MODESTO JUNIOR COLLEGE CAMPUS CONSTRUCTION UPDATE

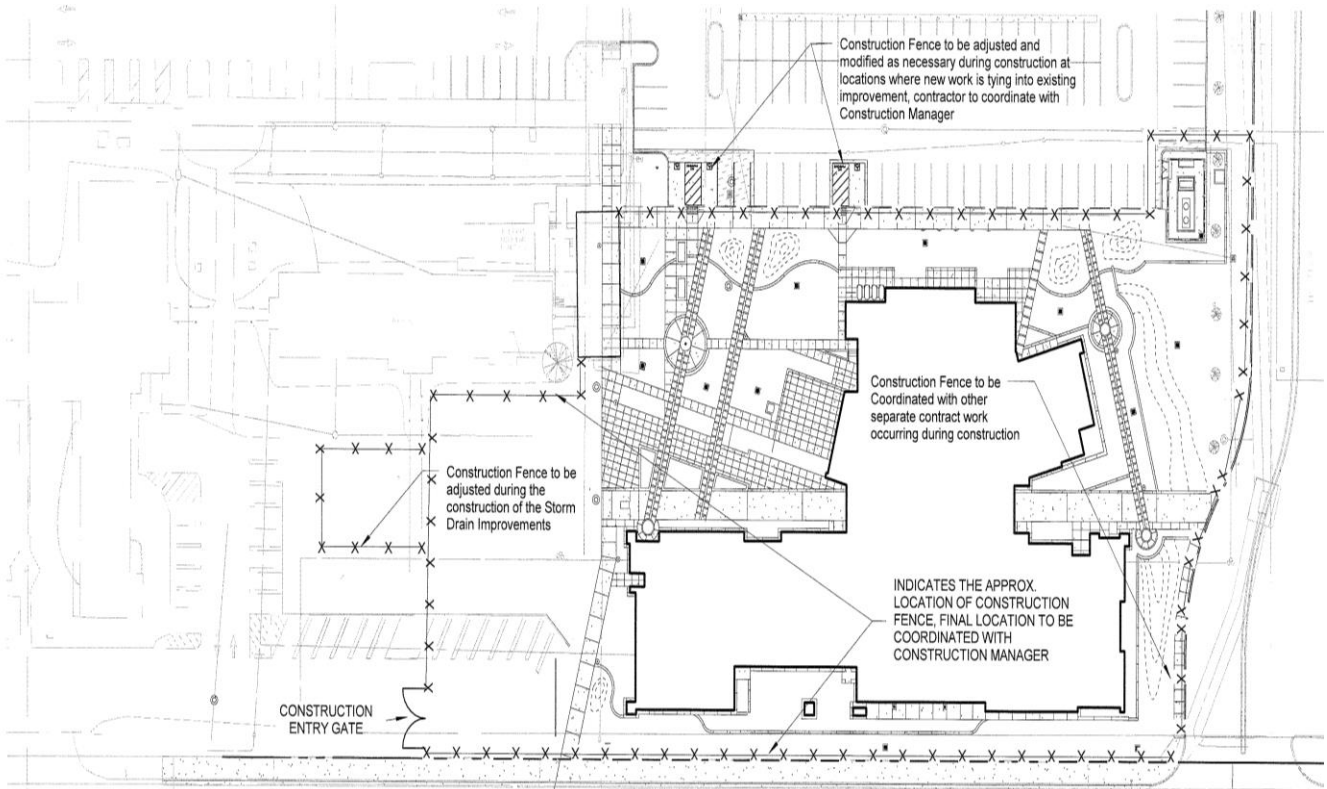


## UPDATES & ACTIVITIES THAT MAY IMPACT CAMPUS OPERATION *Week of May 4, 2015*

### District Office Building

**Work this week:** Continue storm drain installation.

|                   |   |
|-------------------|---|
| <b>Access:</b>    | No restrictions                           |
| <b>Noise:</b>     | Minor Equipment Noise                     |
| <b>Parking:</b>   | Some parking loss for duration of project |
| <b>Utilities:</b> | None                                      |
| <b>Odors:</b>     | None                                      |
| <b>Dust:</b>      | Minor impact.                             |



X-X-X

Construction fencing, Restricted access



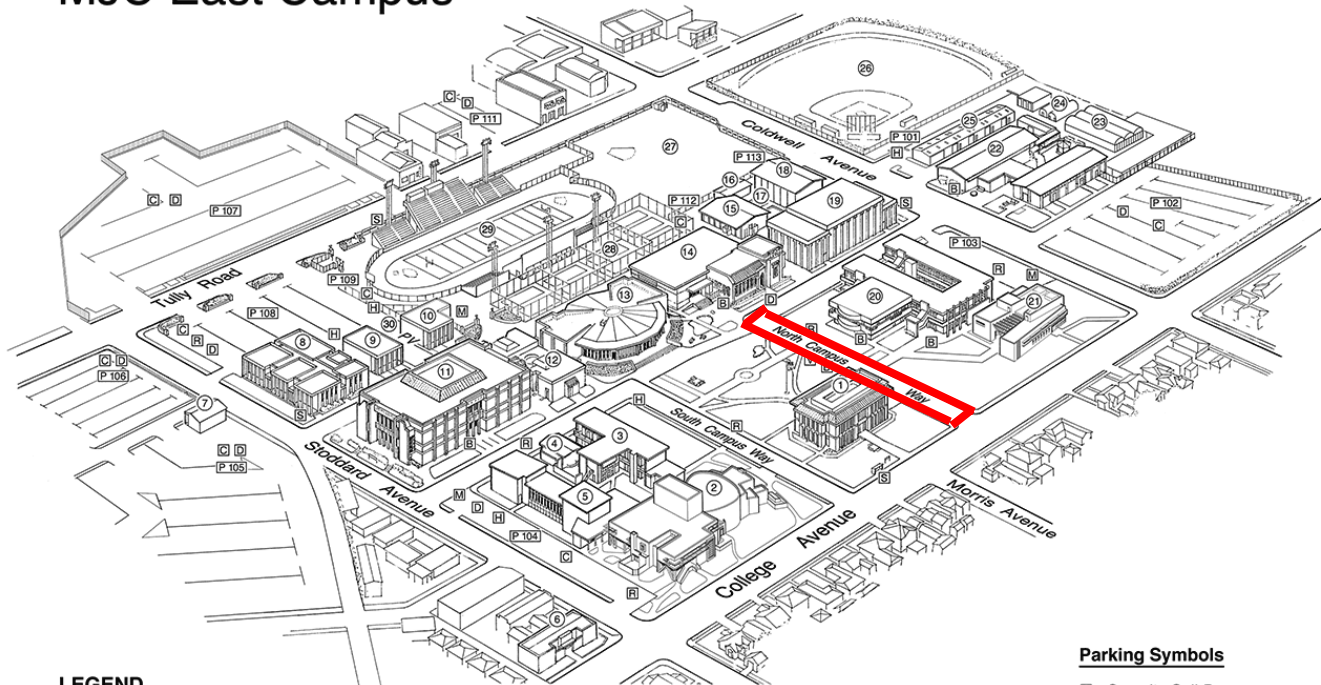
# Measure E Bond Program MODESTO JUNIOR COLLEGE CAMPUS CONSTRUCTION UPDATE Page 2 of 5

## East Campus Roads- North Drive

**Work this week:** Saw cutting and demolition.

|                   |                                |
|-------------------|--------------------------------|
| <b>Access:</b>    | North Drive will be fenced off |
| <b>Noise:</b>     | None                           |
| <b>Parking:</b>   | None                           |
| <b>Utilities:</b> | None                           |
| <b>Odors:</b>     | None                           |
| <b>Dust:</b>      | None                           |

## MJC East Campus



### LEGEND

|                                       |   |                               |                      |
|---------------------------------------|---|-------------------------------|----------------------|
| 1 Administration<br>(Morris Memorial) | 7 Facilities Operations                 | 15 Physical Education- Men    | 23 Greenhouse        |
| 2 Performing and<br>Media Arts Center | 8 Electronics/ Computer Science         | 16 Physical Education Offices | 24 Propagation House |
| 3 Art                                 | 9 Journalism                            | 17 Swimming Pool              | 25 Ag Storage        |
| 4 Art Gallery                         | 10 Classroom Annex                      | 18 Physical Education- Women  | 26 Athletic Field #2 |
| 5 Music                               | 11 Founders' Hall                       | 19 Gymnasium                  | 27 Athletic Field #1 |
| 6 Great Valley Museum                 | 12 Forum                                | 20 Science                    | 28 Tennis Courts     |
|                                       | 13 Student Center                       | 21 Student Services           | 29 Stadium           |
|                                       | 14 Learning Resource Center/<br>Library | 22 Agriculture                | 30 Pirates' Village  |

### Parking Symbols

|   |   |
|---|---|
| ☒ | Security Call Box                       |
| ☐ | Parking 101-113                         |
| Ⓛ | Parking Dispenser                       |
| ♿ | Disabled Parking                        |
| 🏍 | Motorcycle Parking                      |
| 🅇 | Reserved Parking                        |
| 👤 | Visitor Parking                         |
| 🚲 | Bicycle Parking                         |
| ☀ | Prime Shine -<br>Pirate Express Shuttle |



# Measure E Bond Program MODESTO JUNIOR COLLEGE CAMPUS CONSTRUCTION UPDATE Page 3 of 5

## GVM EDUCATION DEMONSTRATION CENTER

**Work this week:** Interior painting in progress.

**Access:** Caution at 3<sup>rd</sup> and E Street.  
Partial closure at 4<sup>th</sup> Street.  
See map below

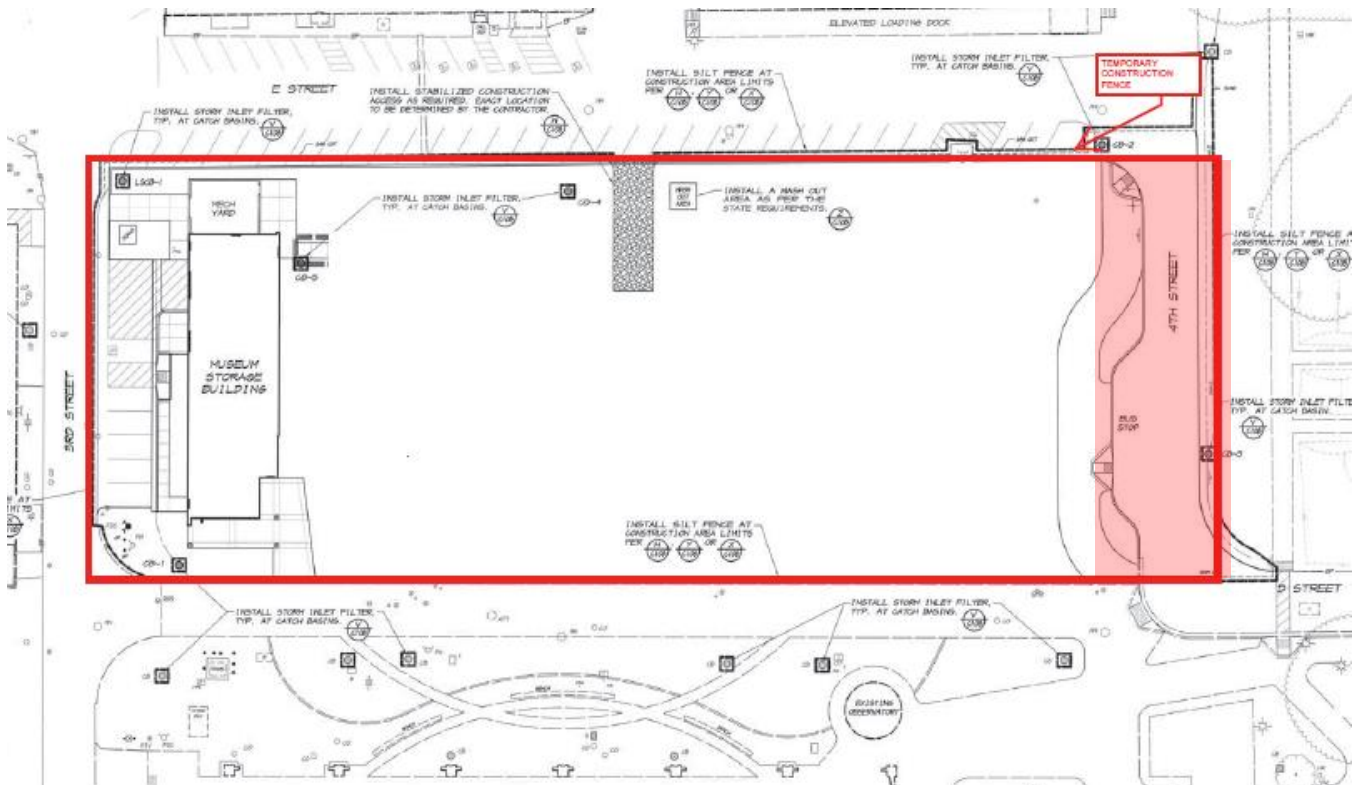
**Noise:** Moderate: Heavy equipment deliveries

**Parking:** None

**Utilities:** None

**Odors:** None

**Dust:** None



|  |   |
|--|---|
|  | Construction fencing, Restricted access                       |
|  | 4 <sup>th</sup> Street closed for the duration of the project |





# Measure E Bond Program MODESTO JUNIOR COLLEGE CAMPUS CONSTRUCTION UPDATE Page 4 of 5

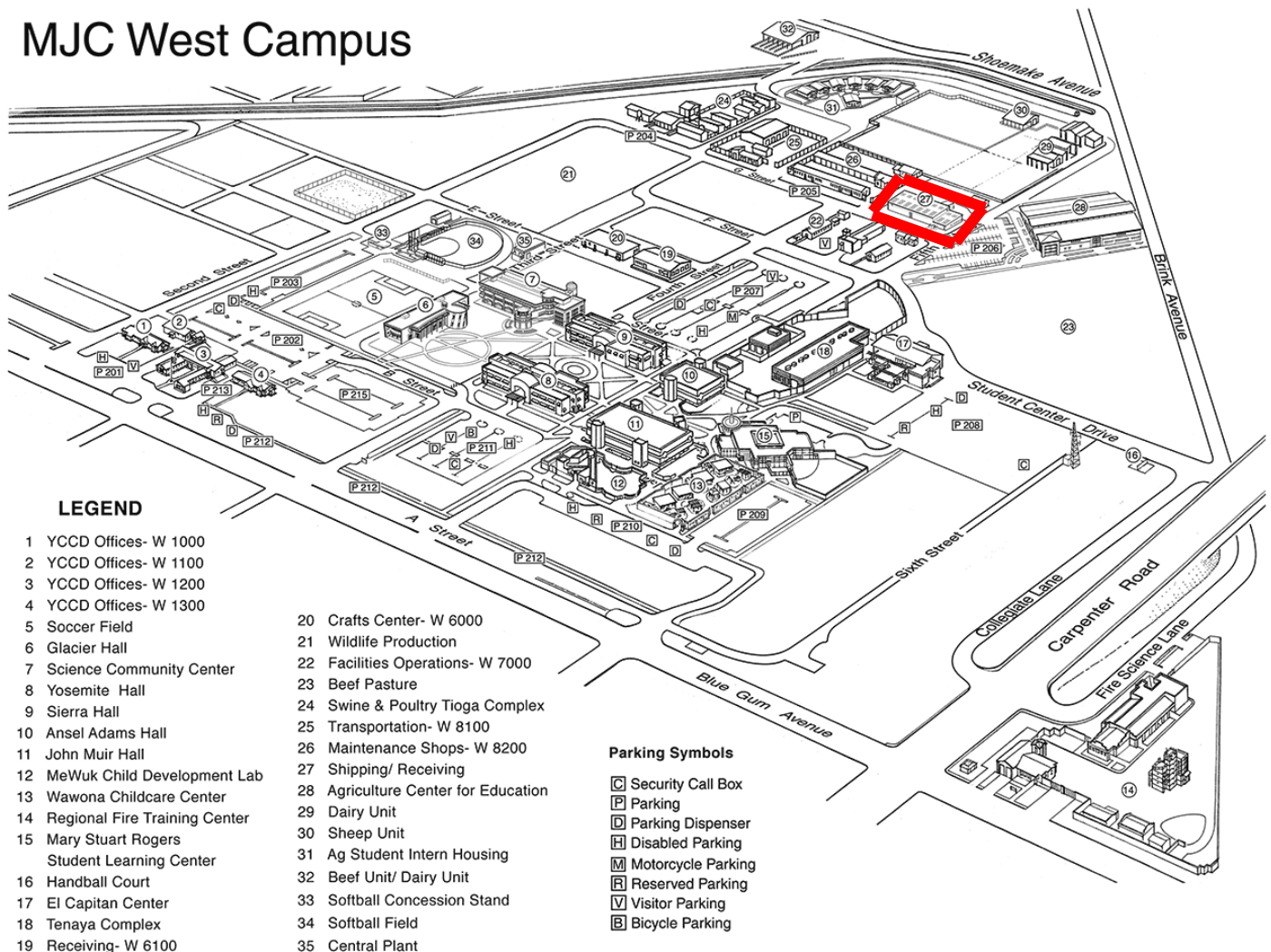
## Shipping & Receiving Remediation Project

**Work this week:** Contractor will mobilize and begin interior abatement on Monday May 4, 2015.

**Access:** Caution at 3<sup>rd</sup> and E Street.  
**Noise:** Low: Demolition  
**Parking:** No parking around allowed around both buildings.  
**Utilities:** None  
**Odors:** None  
**Dust:** None



## MJC West Campus



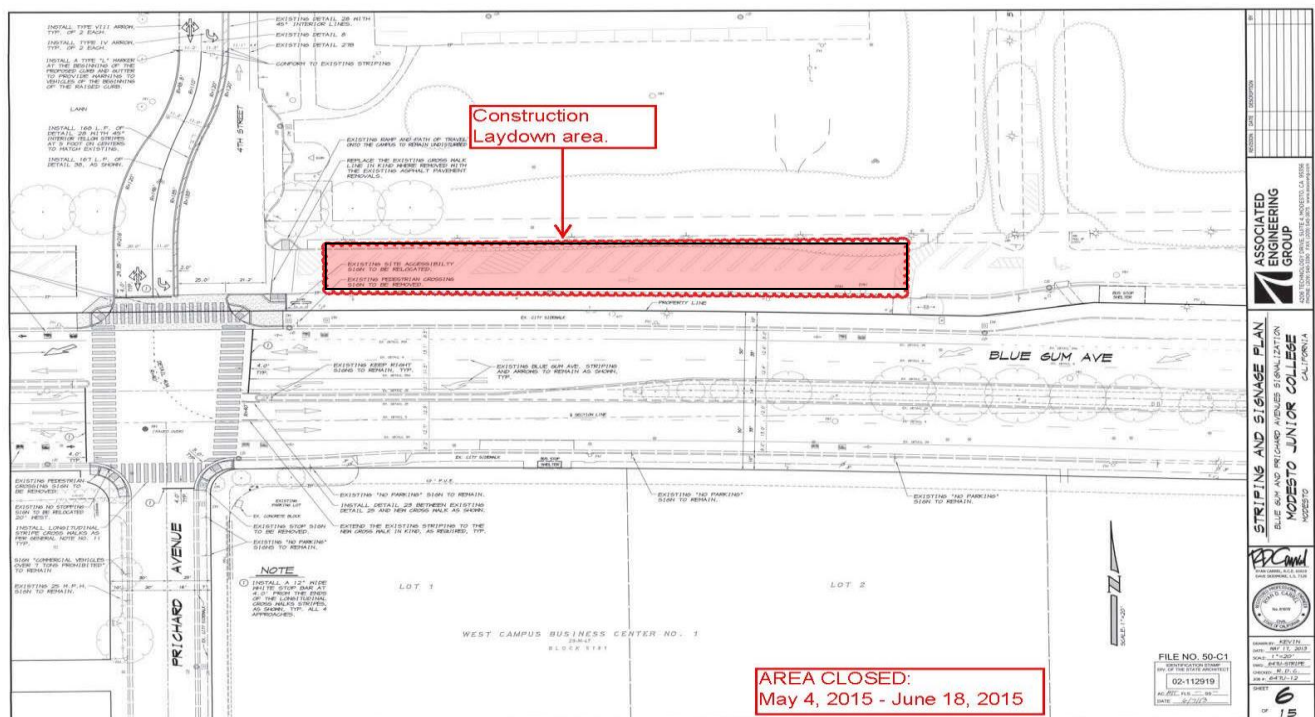
## Blue Gum Avenue and Pritchard Way Signalization Project


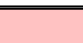
**Work this week:** Contractor will mobilize and install temp fencing along Blue Gum Ave. frontage road.

|                   |  |
|-------------------|--|
| <b>Access:</b>    | Caution at Blue Gum Ave. and 4 <sup>th</sup> Street Intersection. Partial closure at 4 <sup>th</sup> street campus entrance. Const. workers will be directing traffic. |
| <b>Noise:</b>     | Low: Demolition  |
| <b>Parking:</b>   | Parking closed along frontage road, east of 4 <sup>th</sup> street entrance. See map.  |
| <b>Utilities:</b> | None   |
| <b>Odors:</b>     | None   |



### MJC WC Traffic Signal Project



|   |   |
|---|---|
|  | Construction fencing, Restricted access       |
|  | Street closed for the duration of the project |

If there are any questions or concerns contact Kitchell CEM, Measure E Bond Construction Manager, located at 2201 Blue Gum Ave., Modesto CA 95358 Tel: 575-6991 Email [mkenedy@kitchell.com](mailto:mkenedy@kitchell.com)