



# Measure E Bond Program MODESTO JUNIOR COLLEGE CAMPUS CONSTRUCTION UPDATE

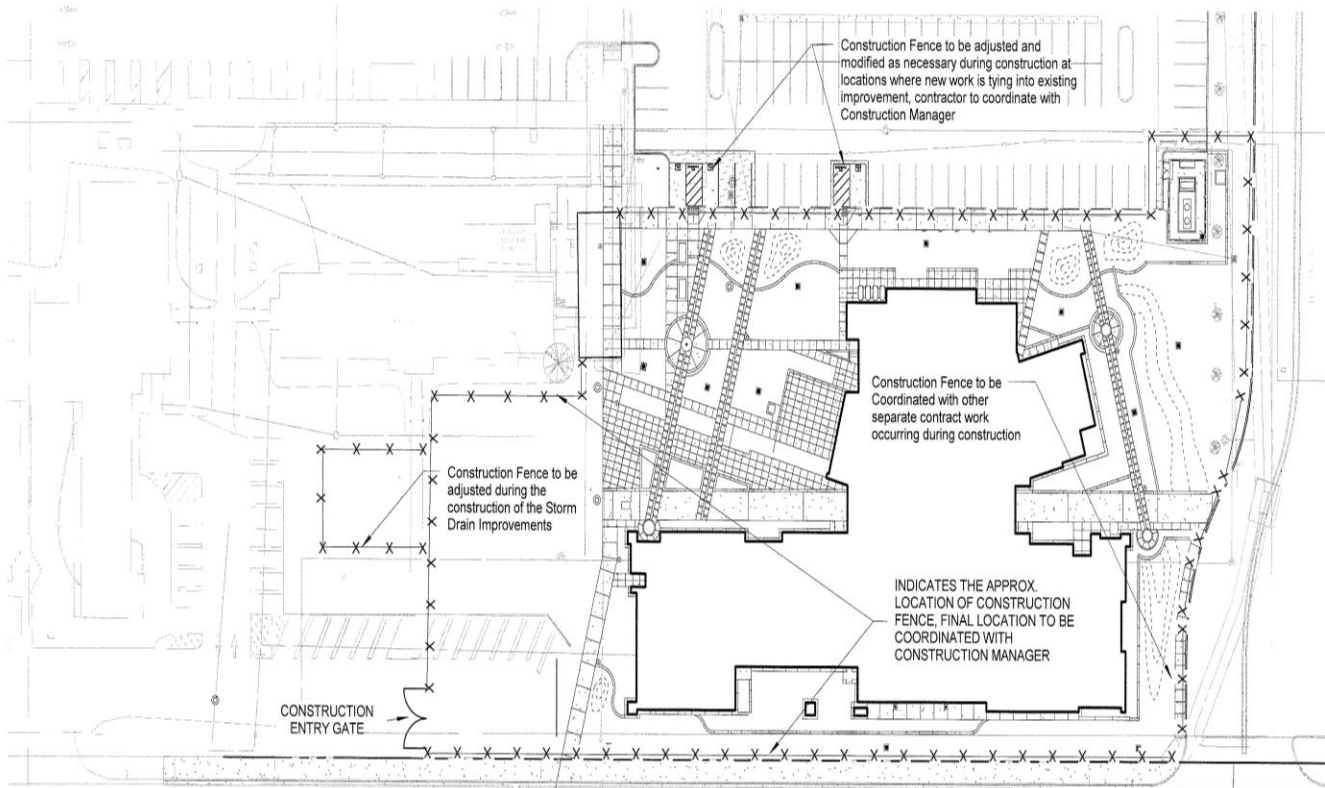


## UPDATES & ACTIVITIES THAT MAY IMPACT CAMPUS OPERATION *Week of April 13, 2015*

### District Office Building

**Work this week:** Construction is scheduled to start on Monday, April 6.

<b>Access:</b>	No restrictions
<b>Noise:</b>	Minor Equipment Noise
<b>Parking:</b>	Some parking loss for duration of project
<b>Utilities:</b>	None
<b>Odors:</b>	None
<b>Dust:</b>	Minor impact.



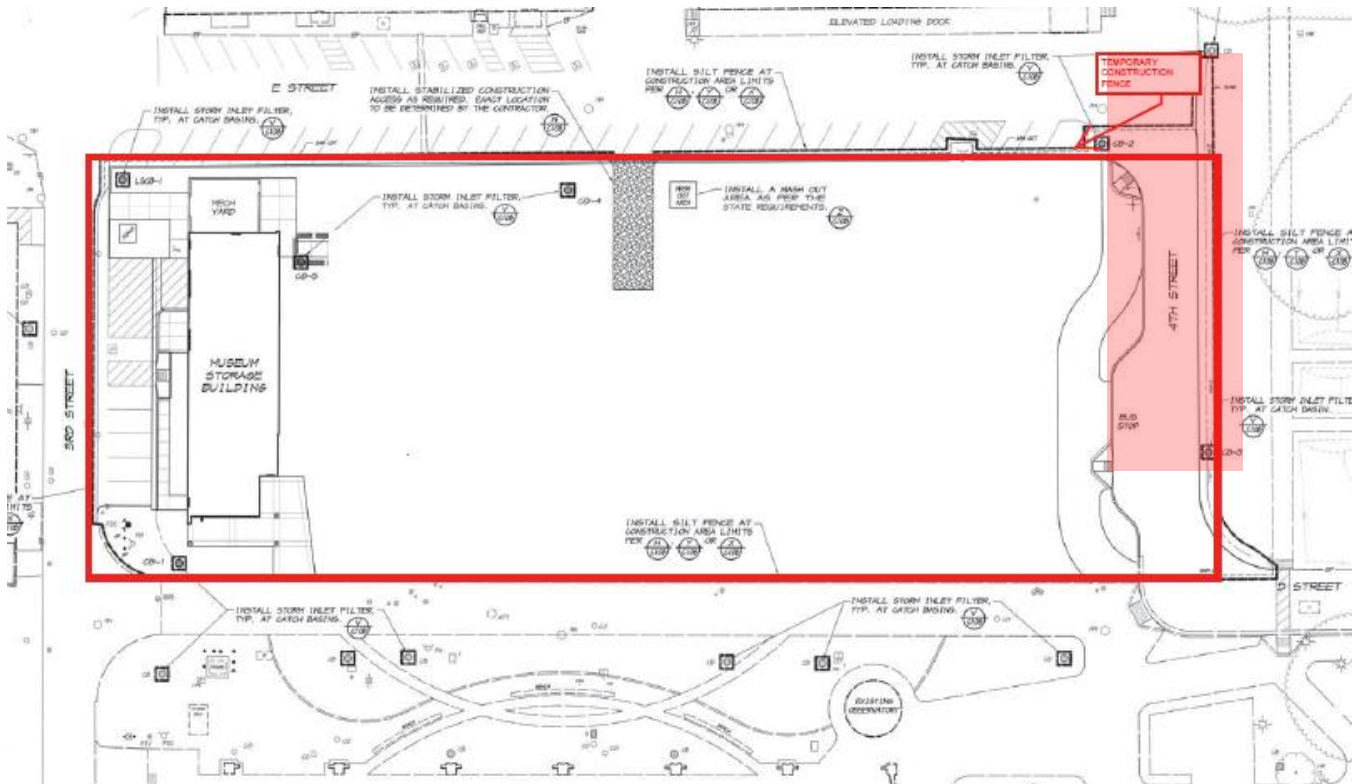
X-X-X



Construction fencing, Restricted access

## GVM EDUCATION DEMONSTRATION CENTER

**Work this week:** Roofing and metal stud installation in progress.

<b>Access:</b>	Caution at 3 <sup>rd</sup> and E Street. Partial closure at 4 <sup>th</sup> Street. See map below
<b>Noise:</b>	Moderate: Heavy equipment deliveries
<b>Parking:</b>	None
<b>Utilities:</b>	None
<b>Odors:</b>	None
<b>Dust:</b>	None



	Construction fencing, Restricted access
	4 <sup>th</sup> Street closed for the duration of the project

If there are any questions or concerns contact Kitchell CEM, Measure E Bond Construction Manager, located at 2201 Blue Gum Ave., Modesto CA 95358 Tel: 575-6991 Email [mkennedy@kitchell.com](mailto:mkennedy@kitchell.com)