



# Measure E Bond Program MODESTO JUNIOR COLLEGE CAMPUS CONSTRUCTION UPDATE

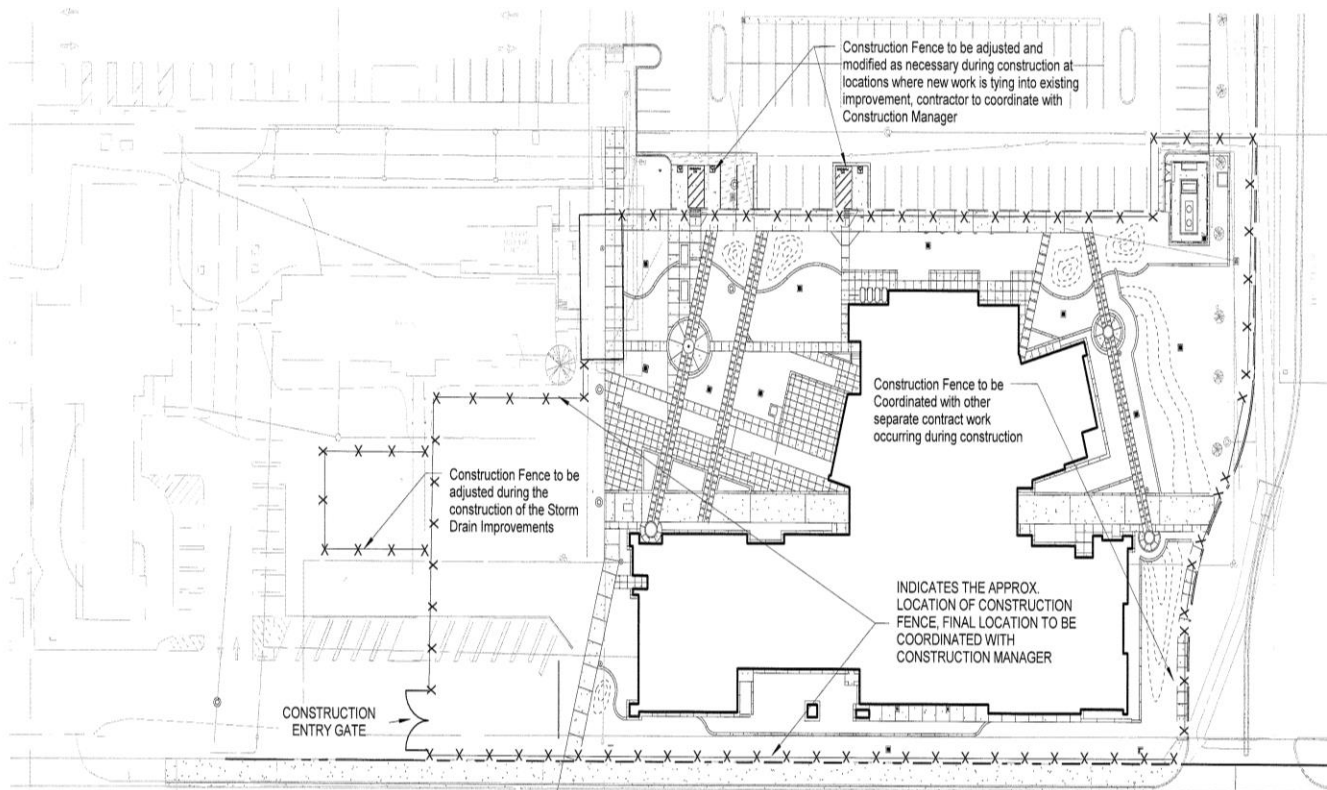


## UPDATES & ACTIVITIES THAT MAY IMPACT CAMPUS OPERATION *Week of April 6, 2015*

### District Office Building

**Work this week:** Construction is scheduled to start on Monday, April 6.

**Access:** No restrictions  
**Noise:** Minor Equipment Noise  
**Parking:** Some parking loss for duration of project  
**Utilities:** None  
**Odors:** None  
**Dust:** Minor impact.



X-X-X

Construction fencing, Restricted access

## GVM EDUCATION DEMONSTRATION CENTER

**Work this week:** Roofing and metal stud installation in progress.

**Access:** Caution at 3<sup>rd</sup> and E Street.  
Partial closure at 4<sup>th</sup> Street.  
See map below

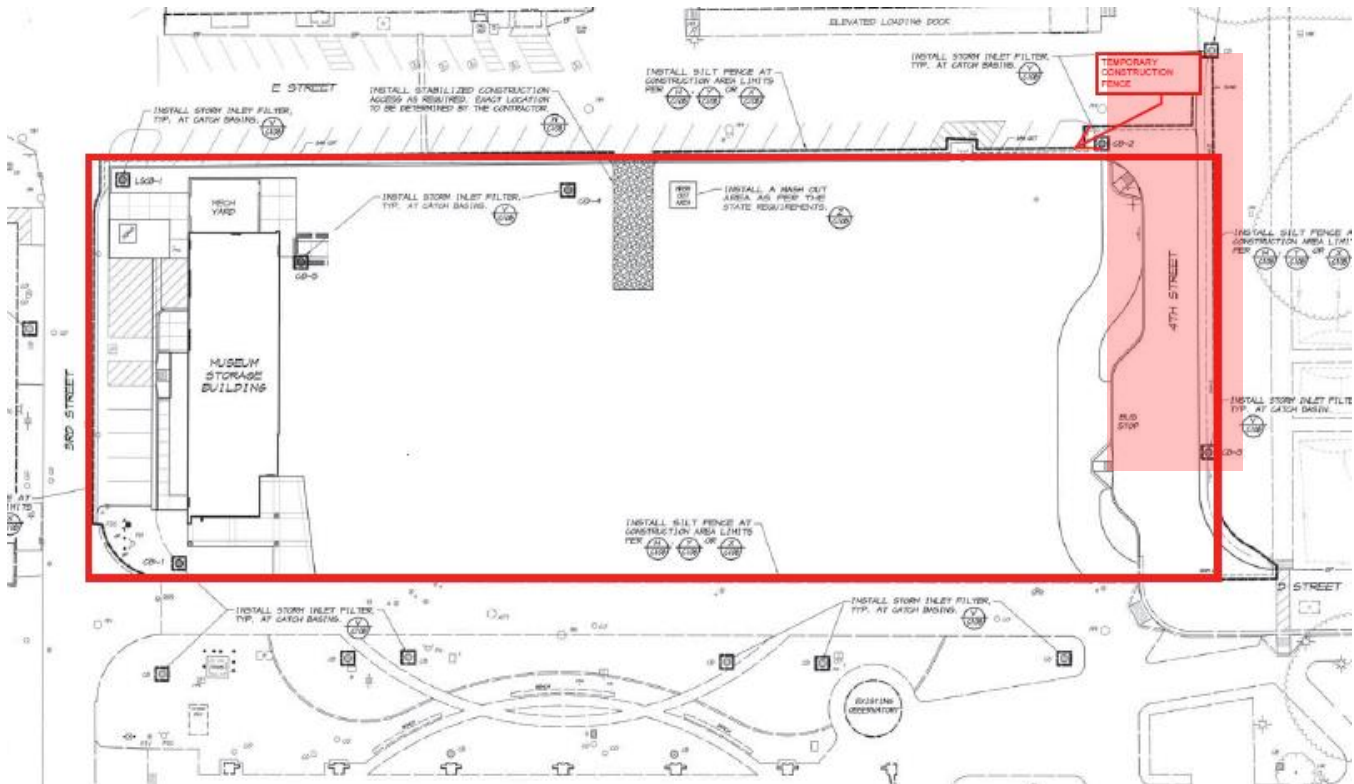
**Noise:** Moderate: Heavy equipment deliveries



**Parking:** None

**Utilities:** None

**Odors:** None

**Dust:** None



	Construction fencing, Restricted access
	4 <sup>th</sup> Street closed for the duration of the project

If there are any questions or concerns contact Kitchell CEM, Measure E Bond Construction Manager, located at 2201 Blue Gum Ave., Modesto CA 95358 Tel: 575-6991 Email [mkennedy@kitchell.com](mailto:mkennedy@kitchell.com)