



Measure E Bond Program MODESTO JUNIOR COLLEGE CAMPUS CONSTRUCTION UPDATE



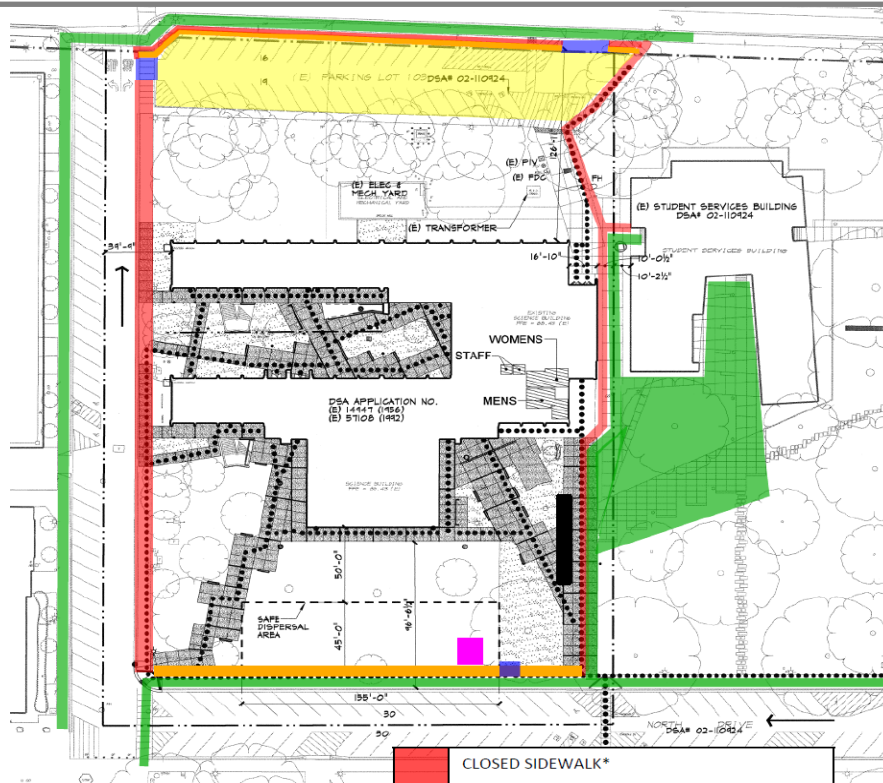
UPDATES & ACTIVITIES THAT MAY IMPACT CAMPUS OPERATION

Week of November 3, 2014

HIGH TECH (NORTH HALL) MODERNIZATION

Work this week: Pulling wires within conduits. Continued installation of sheet rock and texture. Continue interior paint and exterior paint. Continue installation of T-bar ceiling and electrical finish work. Start exterior panel installation work.

Access:	Partial closure at North Drive sidewalk
Noise:	Substantial: Drilling
Parking:	See attached map for closure.
Utilities:	None
Odors:	None



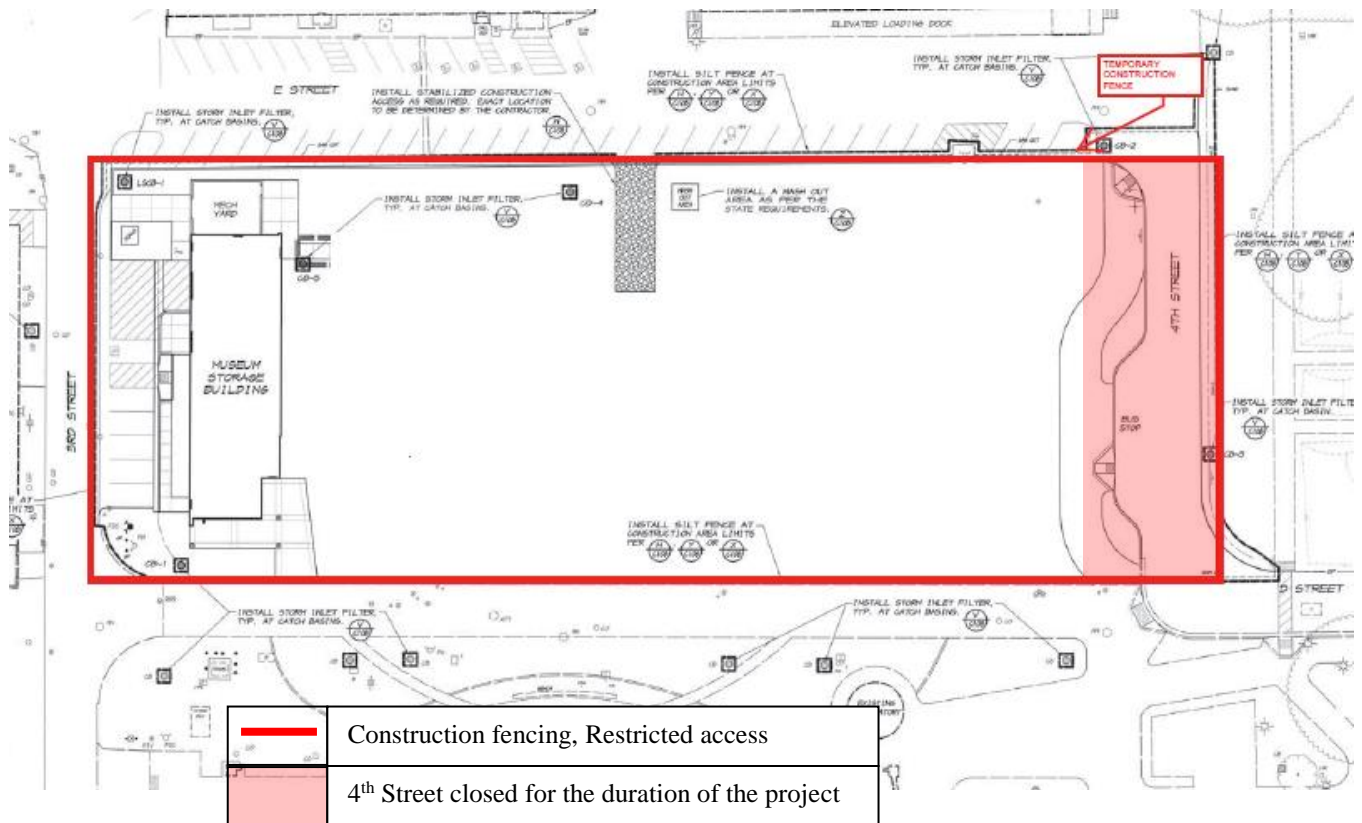
**NORTH HALL
Access and Closure Map**

	CLOSED SIDEWALK*
	CLOSED PARKING LOT*
	GATE IN FENCE
	OPEN SIDEWALK (Portions may need to close towards the end of the project for new concrete)
	FENCE ALONG OPEN SIDEWALK
	CONSTRUCTION TRAILER
	KITCHELL TRAILER
	* Duration of the Project

GVM EDUCATION DEMONSTRATION CENTER

Work this week: Continue curbs and walkway near 4th street and E street. Remove debris and dirt from site. Install AB and asphalt. Delivery and install of block.

Access:	Caution at 3 rd and E Street. Partial closure at 4 th Street. See map below
Noise:	Moderate: Heavy equipment deliveries
Parking:	None
Utilities:	None
Odors:	None



If there are any questions or concerns contact Kitchell CEM, Measure E Bond Construction Manager, located at 2201 Blue Gum Ave., Modesto CA 95358 Tel: 575-6991 Email mkenney@kitchell.com