



# Measure E Bond Program MODESTO JUNIOR COLLEGE CAMPUS CONSTRUCTION UPDATE

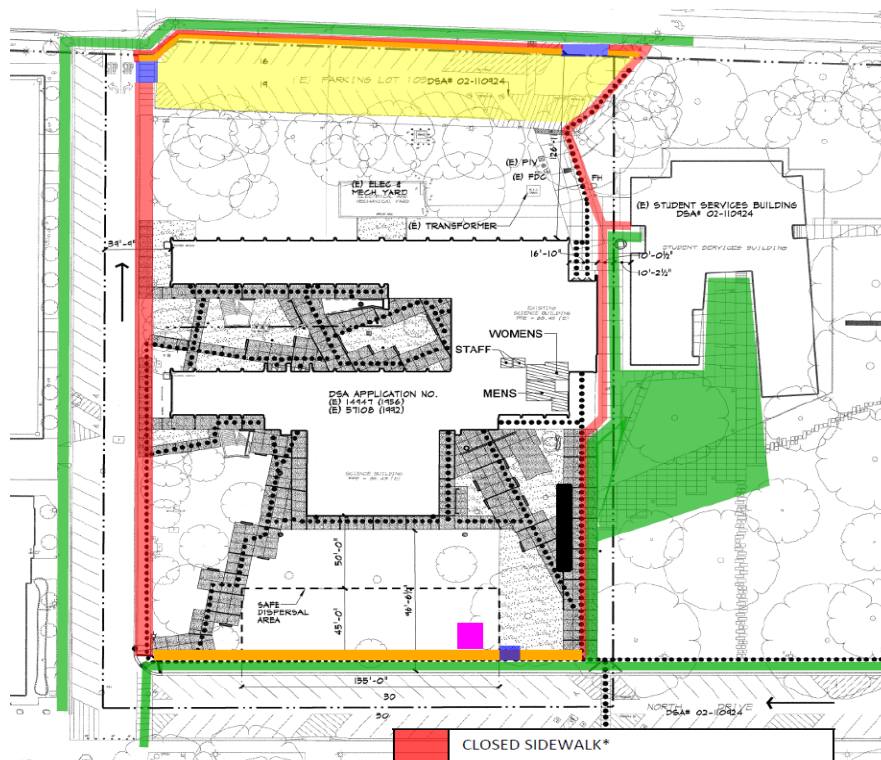


## UPDATES & ACTIVITIES THAT MAY IMPACT CAMPUS OPERATION *Week of May 26, 2014*

### HIGH TECH (NORTH HALL) MODERNIZATION

**Work this week:** Mechanical, electrical and plumbing rough in. Metal stud framing and installation of Densglass sheathing.

|                   |                                  |
|-------------------|----------------------------------|
| <b>Access:</b>    | Caution at North Drive           |
| <b>Noise:</b>     | Moderate: equipment & deliveries |
| <b>Parking:</b>   | See attached map for closure.    |
| <b>Utilities:</b> | None                             |
| <b>Odors:</b>     | None                             |
| <b>Dust:</b>      | None                             |



**NORTH HALL  
Access and Closure Map**

|  |  |
|--|--|
|  | CLOSED SIDEWALK*   |
|  | CLOSED PARKING LOT*  |
|  | GATE IN FENCE  |
|  | OPEN SIDEWALK (Portions may need to close towards the end of the project for new concrete) |
|  | FENCE ALONG OPEN SIDEWALK  |
|  | CONSTRUCTION TRAILER   |
|  | KITCHELL TRAILER   |
|  | * Duration of the Project  |

## GVM STORAGE BUILDING

**Work this week:** Building footing reinforcement and installation of plumbing and electrical sleeves. Start installation of forms.

**Access:** Caution at 3<sup>rd</sup> and E Street.  
Partial closure at 4<sup>th</sup> Street.  
See map below

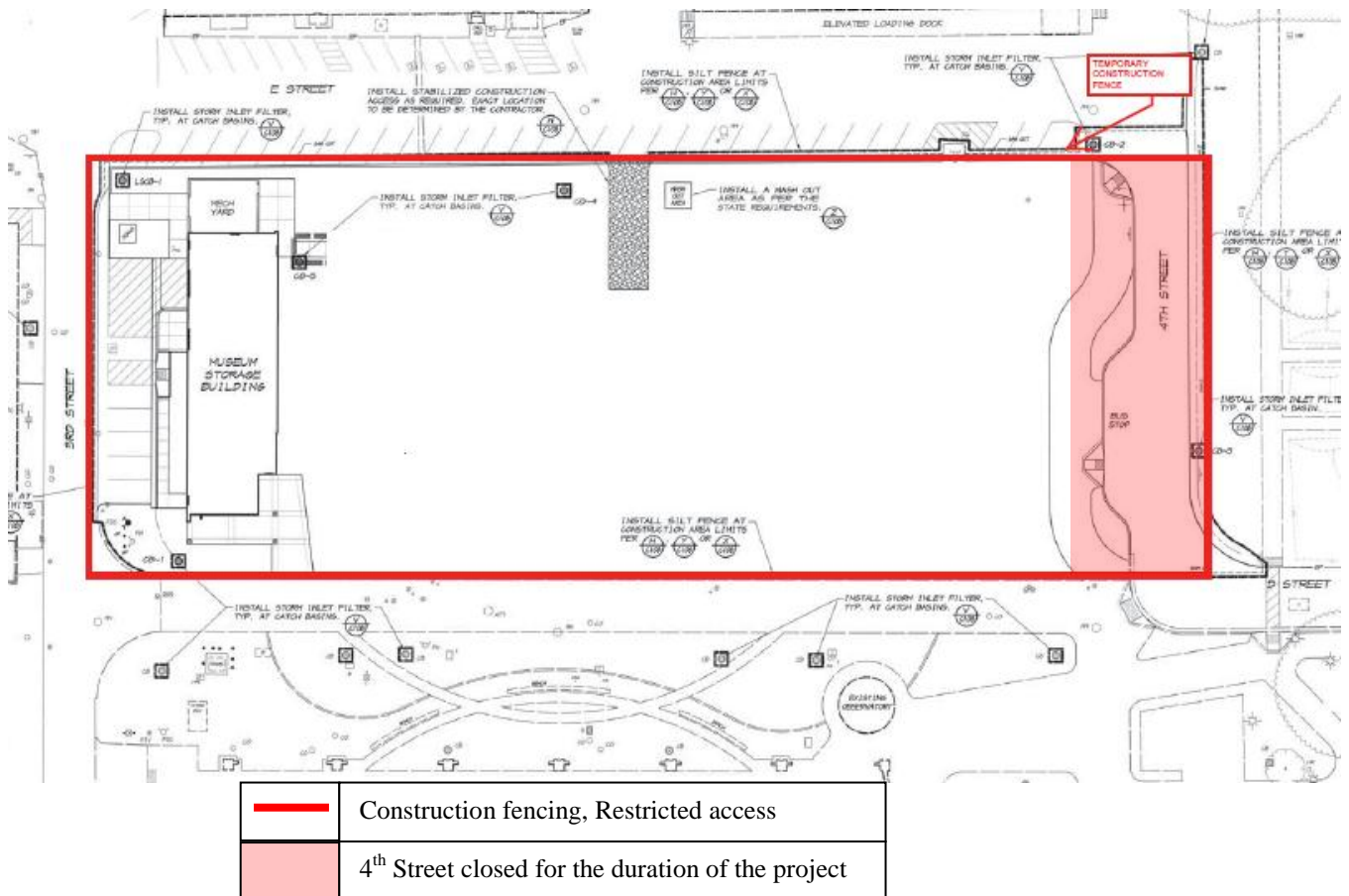
**Noise:** Moderate: Heavy equipment deliveries

**Parking:** None

**Utilities:** None

**Odors:** None

**Dust:** None



If there are any questions or concerns contact Kitchell CEM, Measure E Bond Construction Manager, located at  
2201 Blue Gum Ave., Modesto CA 95358 Tel: 575-6991 Email [mkenney@kitchell.com](mailto:mkenney@kitchell.com)