



Measure E Bond Program MODESTO JUNIOR COLLEGE CAMPUS CONSTRUCTION UPDATE



UPDATES & ACTIVITIES THAT MAY IMPACT CAMPUS OPERATION *Week of June 20, 2011*

AGRICULTURE MULTIPURPOSE PAVILION

Work this week: Exterior site work landscape & irrigation, paint in classrooms, aluminum storefront, casework in classrooms, flooring, installation of fixtures in restrooms, lockers, installation of roof walkway, light fixtures in arena, power to mechanical equip.

Access:	No Impact
Noise:	Low to Moderate
Parking:	No Impact
Utilities:	No
Odors:	No
Dust:	Minimal



ALLIED HEALTH BUILDING

Work this week: Frame, sheet-rock, plaster and paint interior walls, install t-bar ceilings and continue interior MEP system rough-ins.

Access:	Caution advised at Southeast site entrance
Noise:	Moderate
Parking:	No impact
Utilities:	No
Odors:	No
Dust:	Minimal



INFRASTRUCTURE INCREMENT II

Work this week: Start grinding E, F and G Streets.

Access:	Traffic impact at E, F and G Streets and Sierra Hall Parking Lot entrance.
Noise:	Construction equipment.
Parking:	No parking at "Trailer Row".
Utilities:	No
Odors:	No
Dust:	Yes. High/Moderate.





Measure E Bond Program MODESTO JUNIOR COLLEGE CAMPUS CONSTRUCTION UPDATE *continued (page 2 of 3)*

SCIENCE COMMUNITY CENTER

Work this week: Erect structural steel, spread deck, weld. Install formwork/rebar - Observatory, first lift.

Access:	Minor impact
Noise:	Moderate impact
Parking:	No anticipated impact
Utilities:	No anticipated impact
Odors:	No anticipated impact
Dust:	No anticipated impact



SOFTBALL FIELD RESTROOM/CONCESSION STAND

Work this week: Continued installation of interior finishes, final data connections in the building, clean up and punch list walk

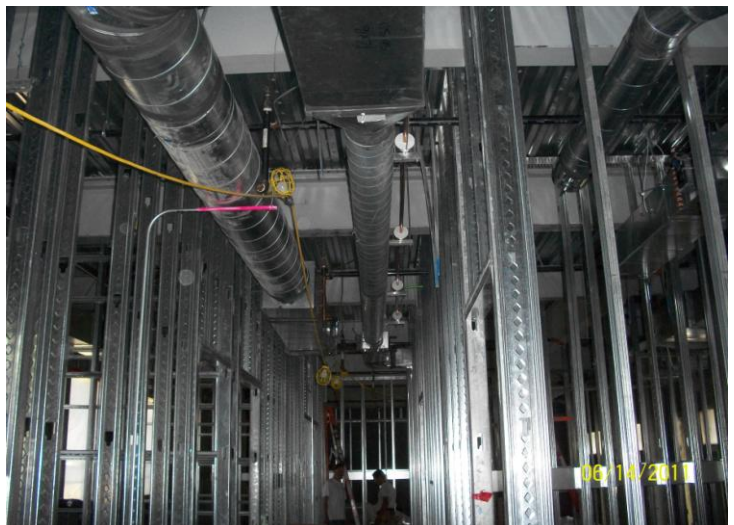
Access:	No Impact
Noise:	Minimal
Parking:	No Impacts
Utilities:	None
Odors:	None
Dust:	Minimal



NEW STUDENT SERVICES

Work this week: Continue installing duct work, electrical and plumbing on first and second floor are 90% complete. Interior framing on second floor and first floor is 95% complete. Continue installation of exterior wall covering metal panels. Contractor continues installation of gypsum board on first and second floor.

Access:	No impact
Noise:	Moderate: equipment & deliveries
Parking:	No additional impacts
Utilities:	None
Odors:	Yes, cutting of metal materials
Dust:	None





Measure E Bond Program MODESTO JUNIOR COLLEGE CAMPUS CONSTRUCTION UPDATE *Continued (page 3 of 3)*

FOUNDERS HALL RENOVATION

Work this week: Mechanical finish, electrical finish, ceiling tile installation. Fire alarm testing and flooring installation is in process. Exterior concrete work in front of building, on East side of South Drive and on corners of Stoddard.

Access:	Ramp between Forum and Founders closed.
Noise:	Deliveries, Concrete saw cutting & trucks
Parking:	No additional impacts
Utilities:	None
Odors:	None
Dust:	Minimal



ART BUILDING LIFE SAFETY UPGRADES

Work this week: Contractor completed installation of CMU wall. Continue rough-in for electrical. Completed demolition and started framing on roof for skylights. Contractor started installation of lift station.

Access:	Occasional Deliveries
Noise:	Equipment
Parking:	No Impacts
Utilities:	None
Odors:	None
Dust:	Minimal



CAMPUS WAY PARKING LOT

Work this week: Fence Installation, curb ramp work, light standards infrastructure work, grinding of pavement.

Access:	Parking Lot 105 is closed through August 5
Noise:	Heavy Equipment
Parking:	Lot is closed
Utilities:	None
Odors:	None
Dust:	Minimal



If there are any questions or concerns contact Kitchell CEM, Measure E Bond Construction Manager, located at 2201 Blue Gum Ave., Rm #1301, Modesto CA 95358 Tel: 575-6991 Email tmillman@kitchell.com

