



UPDATES & ACTIVITIES THAT MAY IMPACT CAMPUS OPERATION

Week of August 17, 2015

DISTRICT OFFICE BUILDING

Work this week: pouring concrete and tying rebar.

Access: None.

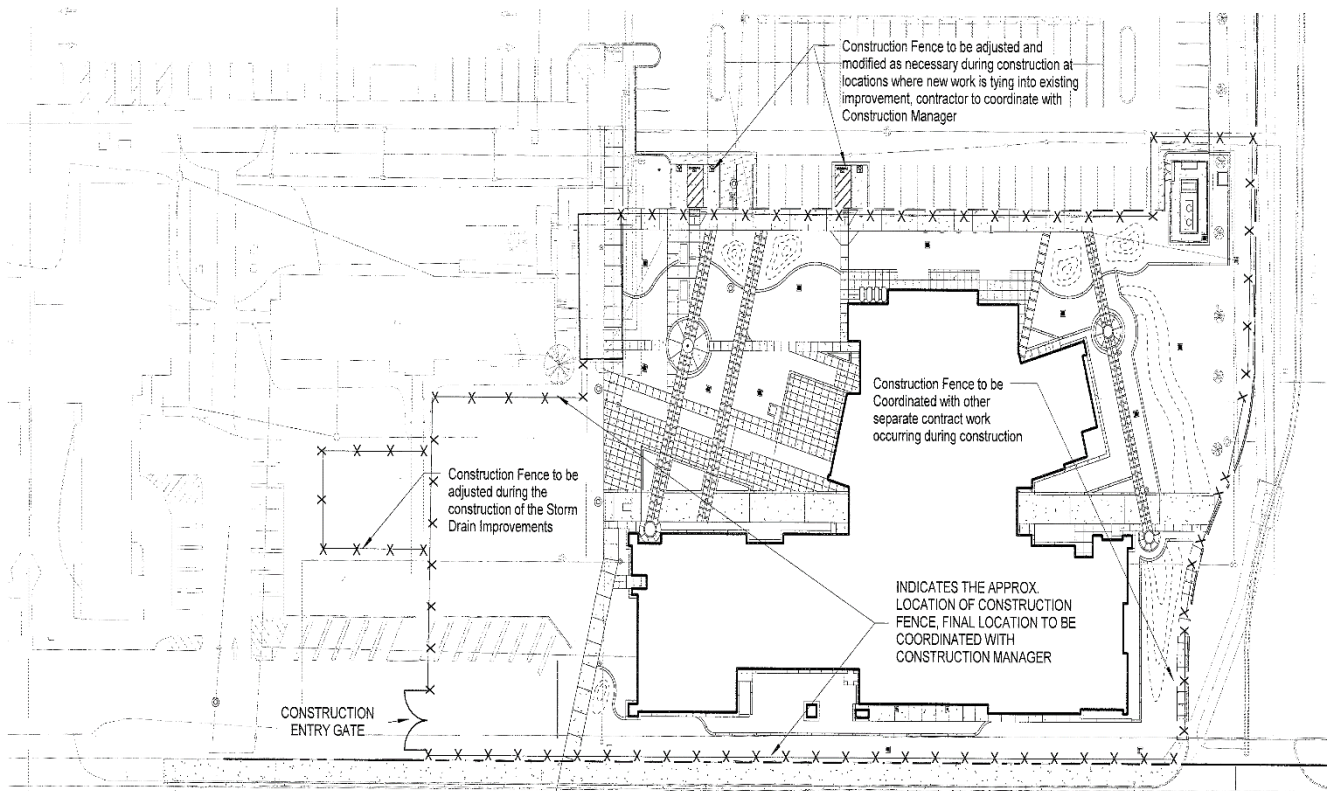
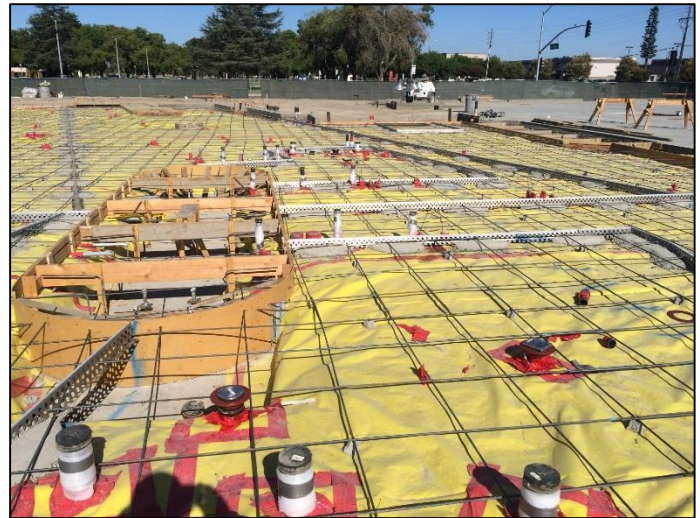
Noise: Moderate due to construction equipment.

Parking: Some parking loss for duration of project.

Utilities: None.

Odors: None

Dust: Minor impact.



X-X-X

Construction fencing, Restricted access



Measure E Bond Program MODESTO JUNIOR COLLEGE CAMPUS CONSTRUCTION UPDATE Page 2 of 2

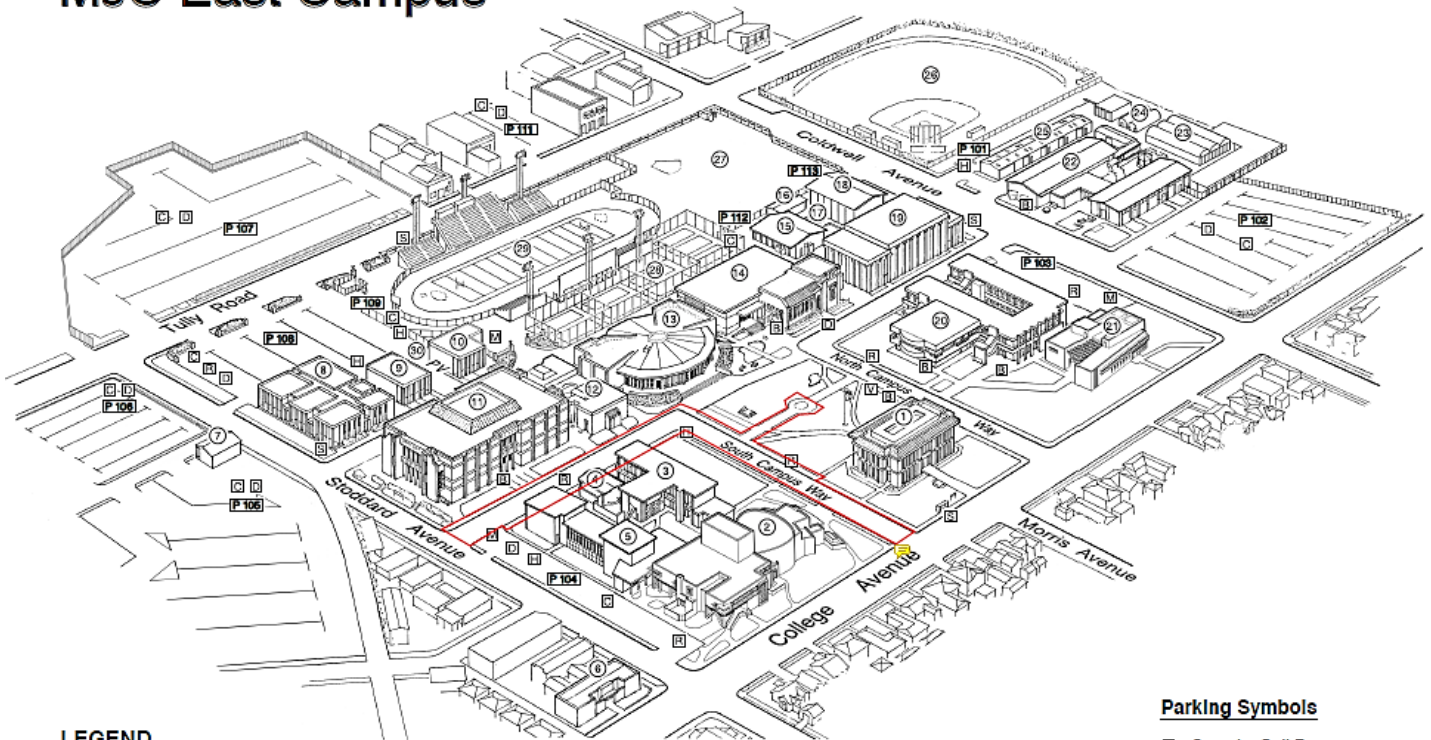
EAST CAMPUS ROADS – SOUTH DRIVE

Work this week: Project completed.

Access:	No access to South Drive for duration of project.
Noise:	Moderate due to construction equipment.
Parking:	No parking along South Drive for duration of project.
Utilities:	None.
Odors:	None.
Dust:	Minor from construction traffic.



MJC East Campus



LEGEND

1 Administration (Morris Memorial)	7 Facilities Operations	15 Physical Education- Men	23 Greenhouse
2 Performing and Media Arts Center	8 Electronics/ Computer Science	16 Physical Education Offices	24 Propagation House
3 Art	9 Journalism	17 Swimming Pool	25 Ag Storage
4 Art Gallery	10 Classroom Annex	18 Physical Education- Women	26 Athletic Field #2
5 Music	11 Founders' Hall	19 Gymnasium	27 Athletic Field #1
6 Great Valley Museum	12 Forum	20 Science	28 Tennis Courts
	13 Student Center	21 Student Services	29 Stadium
	14 Learning Resource Center/ Library	22 Agriculture	30 Pirates' Village

Parking Symbols

☑	Security Call Box
P 101-113	Parking 101-113
Ⓟ	Parking Dispenser
♿	Disabled Parking
🏍	Motorcycle Parking
🅇	Reserved Parking
👤	Visitor Parking
🚲	Bicycle Parking
☀	Prime Shine - Pirate Express Shuttle

If there are any questions or concerns contact Kitchell CEM, Measure E Bond Construction Manager, located at 2201 Blue Gum Ave., Modesto CA 95358 Tel: 575-6991 Email mkenedy@kitchell.com

