



**UPDATES & ACTIVITIES THAT MAY IMPACT
 CAMPUS OPERATION**

Week of September 2, 2013

SHIPPING & RECEIVING BLDG

Work this week: Working on punchlist items.

- Access:** Caution at G Street and 5th Street
- Noise:** Moderate: equipment & deliveries
- Parking:** No anticipated impact
- Utilities:** No anticipated impact
- Odors:** No anticipated impact
- Dust:** No anticipated impact



PRIMARY DATA CENTER

Work this week: Working on punchlist items.

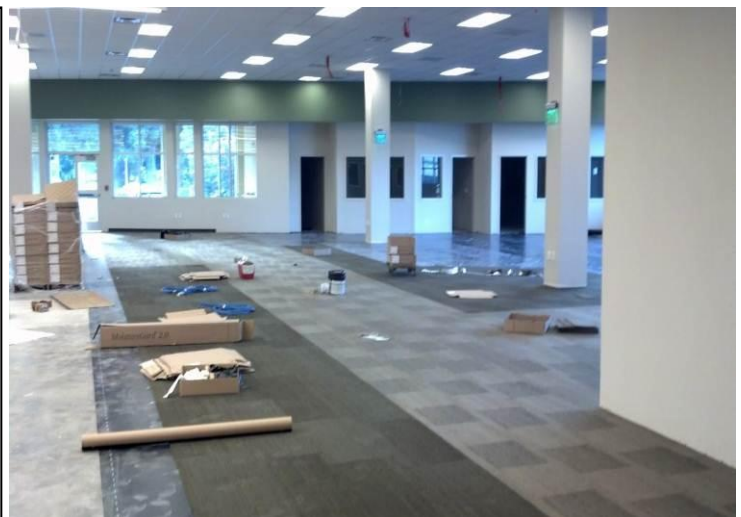
- Access:** Caution at G Street and 3rd street.
- Noise:** Moderate impact
- Parking:** No anticipated impact
- Utilities:** No anticipated impact
- Odors:** No anticipated impact
- Dust:** Moderate impact



LIBRARY RENOVATION

Work this week: Continue painting, interior finishes and electrical installation. Continue exterior site work. Continue installation of low voltage systems.

- Access:** See access map below
- Noise:** Moderate: equipment & deliveries
- Parking:** See attached map for closure.
- Utilities:** None
- Odors:** None
- Dust:** None





Measure E Bond Program MODESTO JUNIOR COLLEGE CAMPUS CONSTRUCTION UPDATE continued (page 2 of 3)

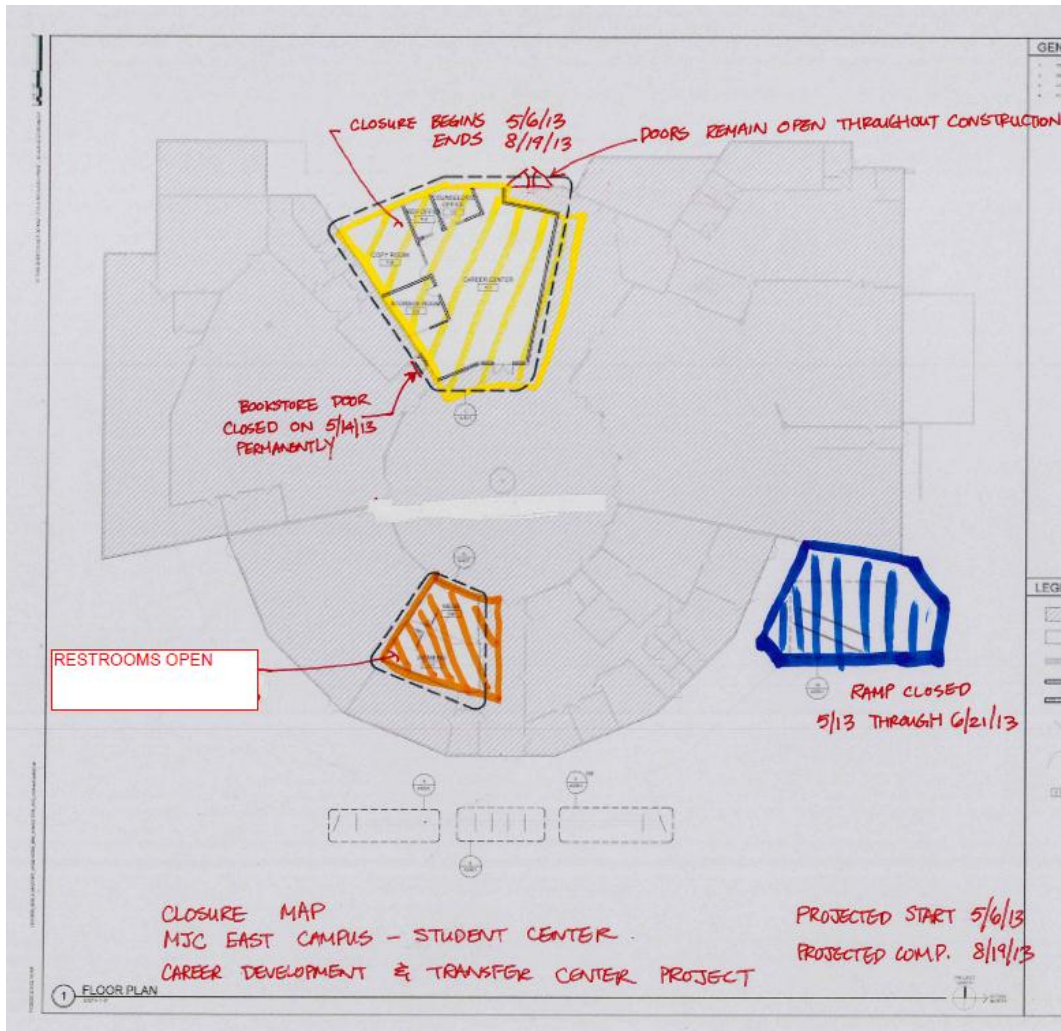
CAREER TRANSFER CENTER

Work this week: Working on punchlist items.

Access:	See updated access map below
Noise:	Moderate: equipment & deliveries
Parking:	See attached map for closure.
Utilities:	None
Odors:	None
Dust:	None

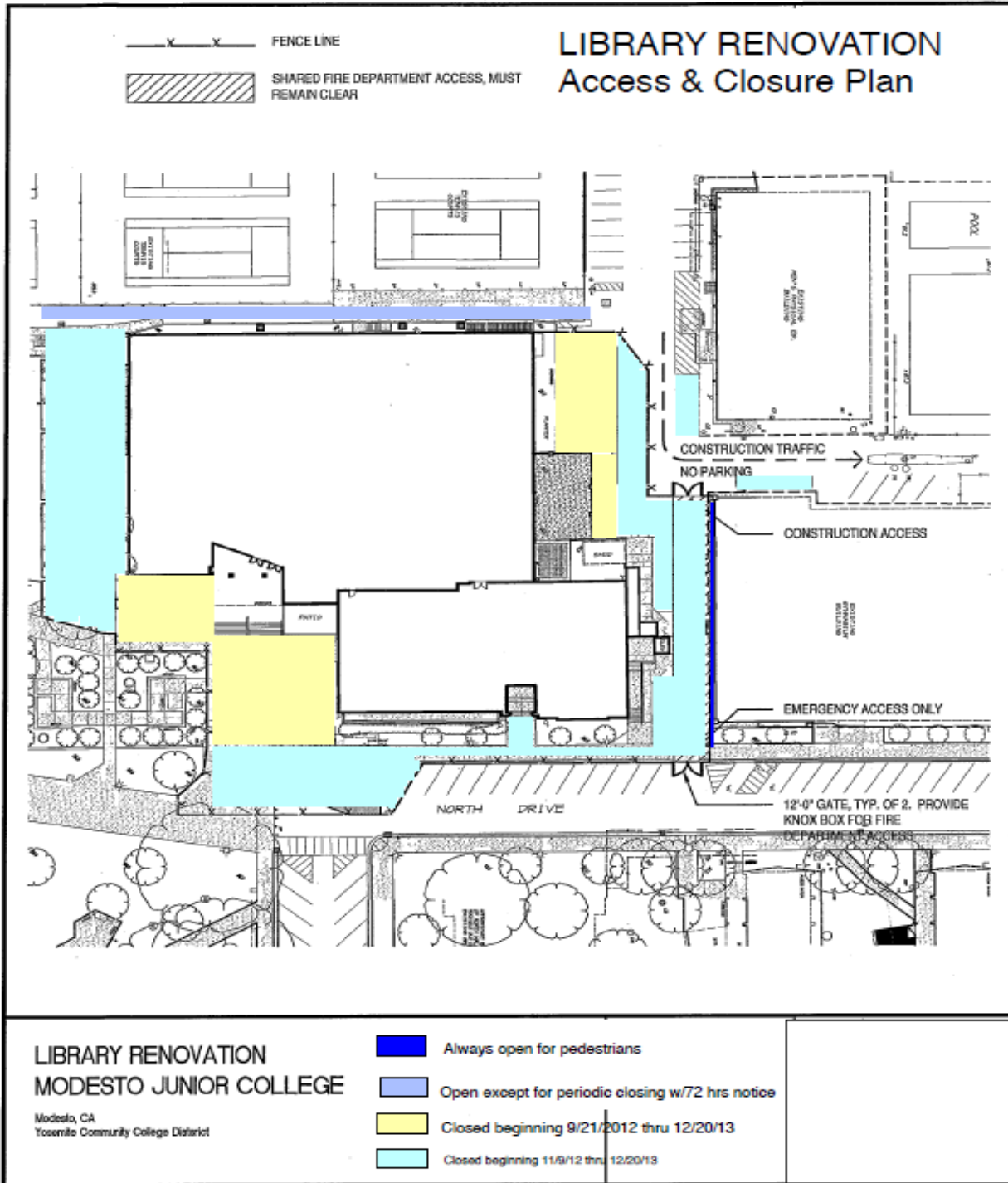


CAREER DEVELOPMENT & TRANSFER CENTER – Access & Closure Map





**Measure E Bond Program
 MODESTO JUNIOR COLLEGE CAMPUS
 CONSTRUCTION UPDATE
 continued (page 3 of 3)**



If there are any questions or concerns contact Kitchell CEM, Measure E Bond Construction Manager, located at 2201 Blue Gum Ave., Modesto CA 95358 Tel: 575-6991 Email mkennedy@kitchell.com

