



# Measure E Bond Program MODESTO JUNIOR COLLEGE CAMPUS CONSTRUCTION UPDATE



## UPDATES & ACTIVITIES THAT MAY IMPACT CAMPUS OPERATION

*Week of August 19, 2013*

### SHIPPING & RECEIVING BLDG

**Work this week:** Working on punchlist items.

<b>Access:</b>	Caution at G Street and 5 <sup>th</sup> Street
<b>Noise:</b>	Moderate: equipment & deliveries
<b>Parking:</b>	No anticipated impact
<b>Utilities:</b>	No anticipated impact
<b>Odors:</b>	No anticipated impact
<b>Dust:</b>	No anticipated impact



### PRIMARY DATA CENTER

**Work this week:** Terminating data cables in data room. Continue installing busducts in data room. Working on punchlist items.

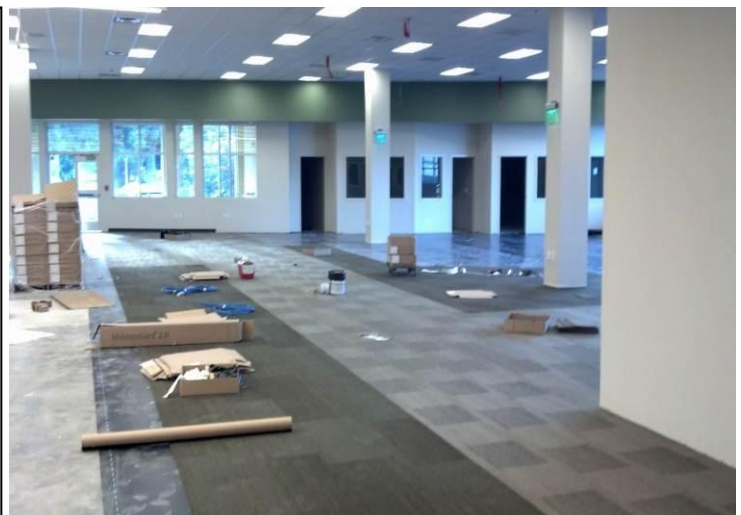
<b>Access:</b>	Caution at G Street and 3 <sup>rd</sup> street.
<b>Noise:</b>	Moderate impact
<b>Parking:</b>	No anticipated impact
<b>Utilities:</b>	No anticipated impact
<b>Odors:</b>	No anticipated impact
<b>Dust:</b>	Moderate impact



### LIBRARY RENOVATION

**Work this week:** Continue painting, interior finishes and electrical installation. Continue exterior site work. Continue installation of low voltage systems.

<b>Access:</b>	See access map below
<b>Noise:</b>	Moderate: equipment & deliveries
<b>Parking:</b>	See attached map for closure.
<b>Utilities:</b>	None
<b>Odors:</b>	None
<b>Dust:</b>	None





# Measure E Bond Program MODESTO JUNIOR COLLEGE CAMPUS CONSTRUCTION UPDATE *continued (page 2 of 3)*

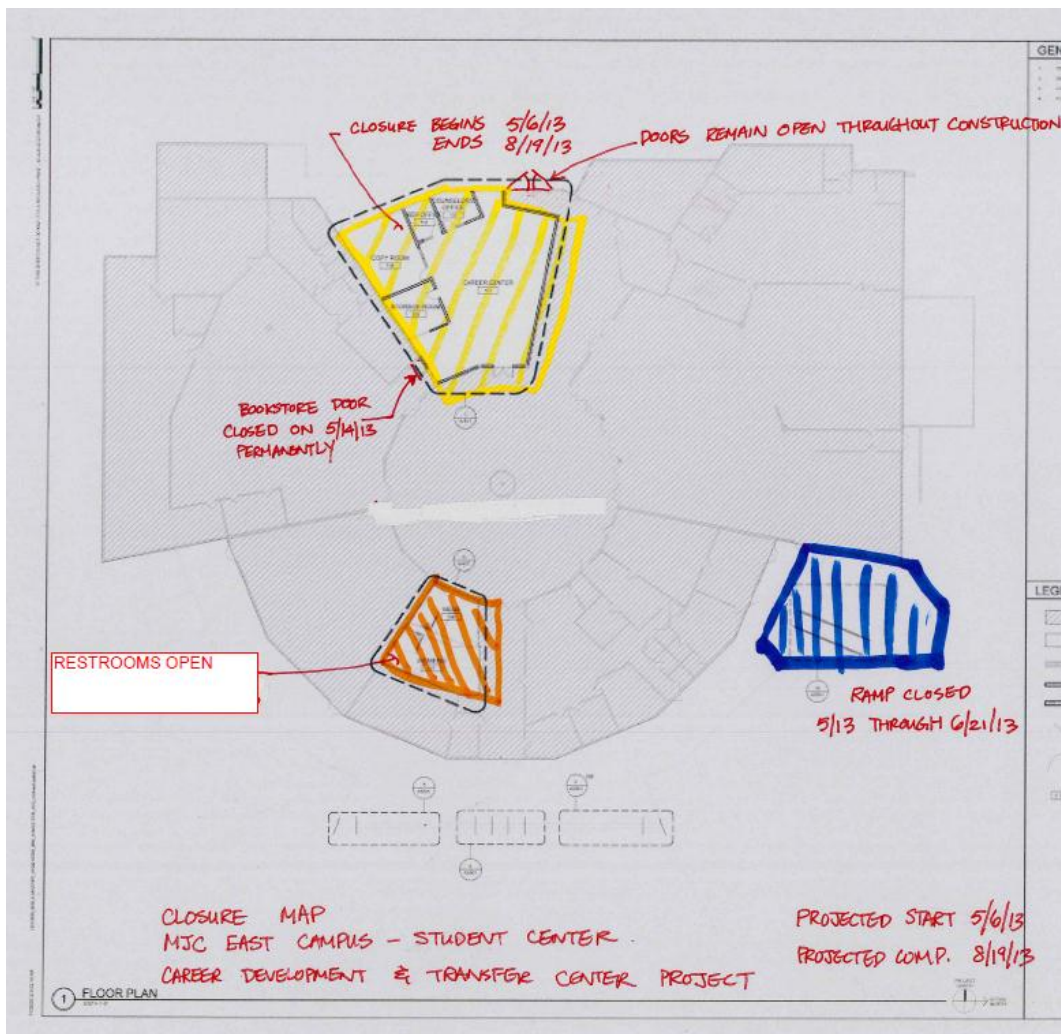
## CAREER TRANSFER CENTER

**Work this week:** Working on punchlist items.

<b>Access:</b>	See updated access map below
<b>Noise:</b>	Moderate: equipment & deliveries
<b>Parking:</b>	See attached map for closure.
<b>Utilities:</b>	None
<b>Odors:</b>	None
<b>Dust:</b>	None

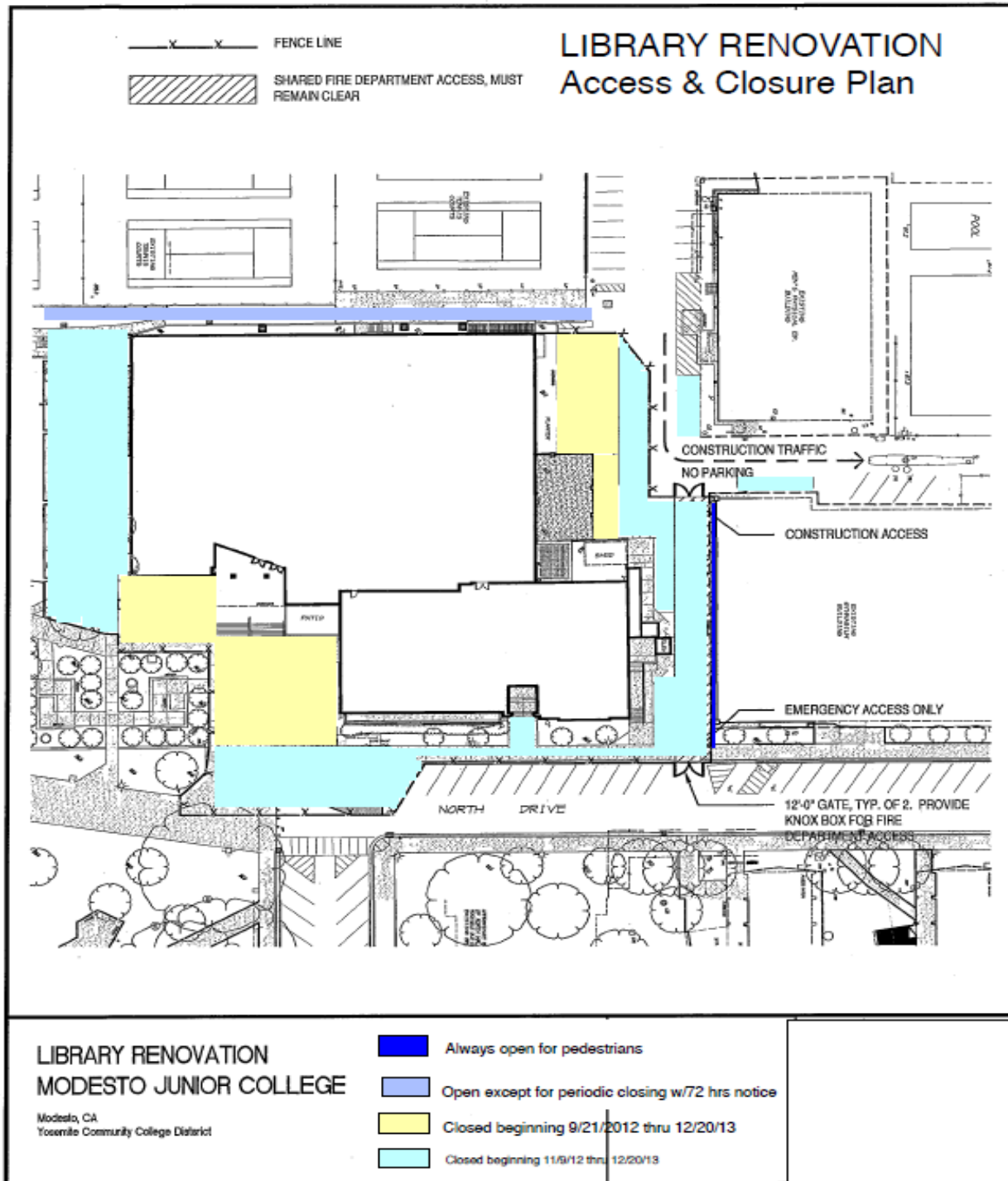


## CAREER DEVELOPMENT & TRANSFER CENTER – Access & Closure Map





Measure E Bond Program  
MODESTO JUNIOR COLLEGE CAMPUS  
CONSTRUCTION UPDATE  
continued (page 3 of 3)



If there are any questions or concerns contact Kitchell CEM, Measure E Bond Construction Manager, located at 2201 Blue Gum Ave., Modesto CA 95358 Tel: 575-6991 Email [mkenedy@kitchell.com](mailto:mkenedy@kitchell.com)

