



Measure E Bond Program

MJC Auditorium Alterations/Addition

CONSTRUCTION UPDATE

Issue No. 30

JUNE 1, 2007

1. Work performed during week of 05/28/07:

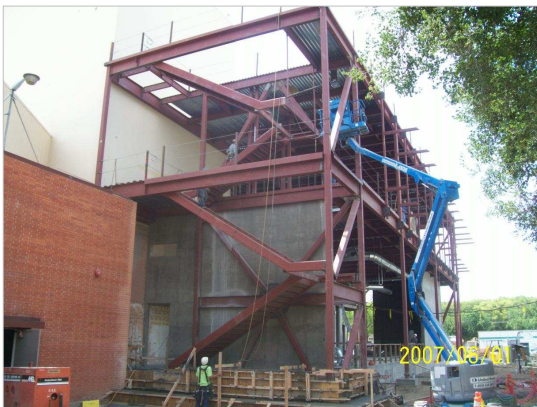
- Continued metal stud framing at north side addition.
- Poured south side addition roof pads.
- Poured E.1 and 6 line footings and stem walls.
- Completed installation of west side stairs to roof.
- Continued metal stud framing at east side stairs.
- Continued fire sprinkler rough-in at 1st floor.
- Continued chilled water pipe installation in basement.
- Continued duct installation at south side addition.
- Erecting south side addition east side scaffolding.
- Installed catwalk beams in fly loft.
- Started roof decking at north side addition.



South Side Addition Concrete Roof Pads

2. Work anticipated for week of 06/04/07:

- Pour Little Theater slab-on-grade.
- Pour sidewalk on east side of Music Building.
- Continue A/V conduit installation above auditorium ceiling
- Continue ductwork and sprinkler piping at 1st floor of south side addition.
- Continue mechanical and electrical work in basement.
- Complete plywood sheathing at north side addition.
- Start ceiling framing at east side loading dock area.



West Side Stairs and Footing Form Installation

3. Activities that may impact campus operations:

- Access: East sidewalk closed at Music/Arts Buildings
- Noise: Construction equipment on south site.
- Parking: Less South Street parking spaces for deliveries.
- Power outages: None anticipated.
- Water off: None anticipated.
- Odors: No unusual odors are expected.
- Dust: No unusual dust is expected.

If there are any questions or concerns contact Kitchell CEM, Measure E Bond Construction Manager, located at 429A Tully Road, Room 103, Modesto CA 95354 Tel: 575-6724 Email shall@kitchell.com

